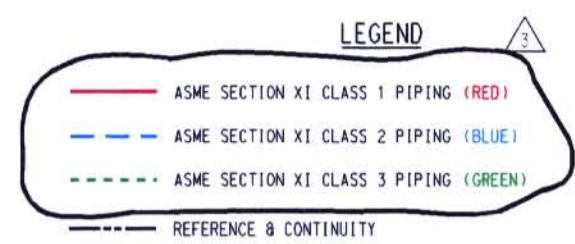
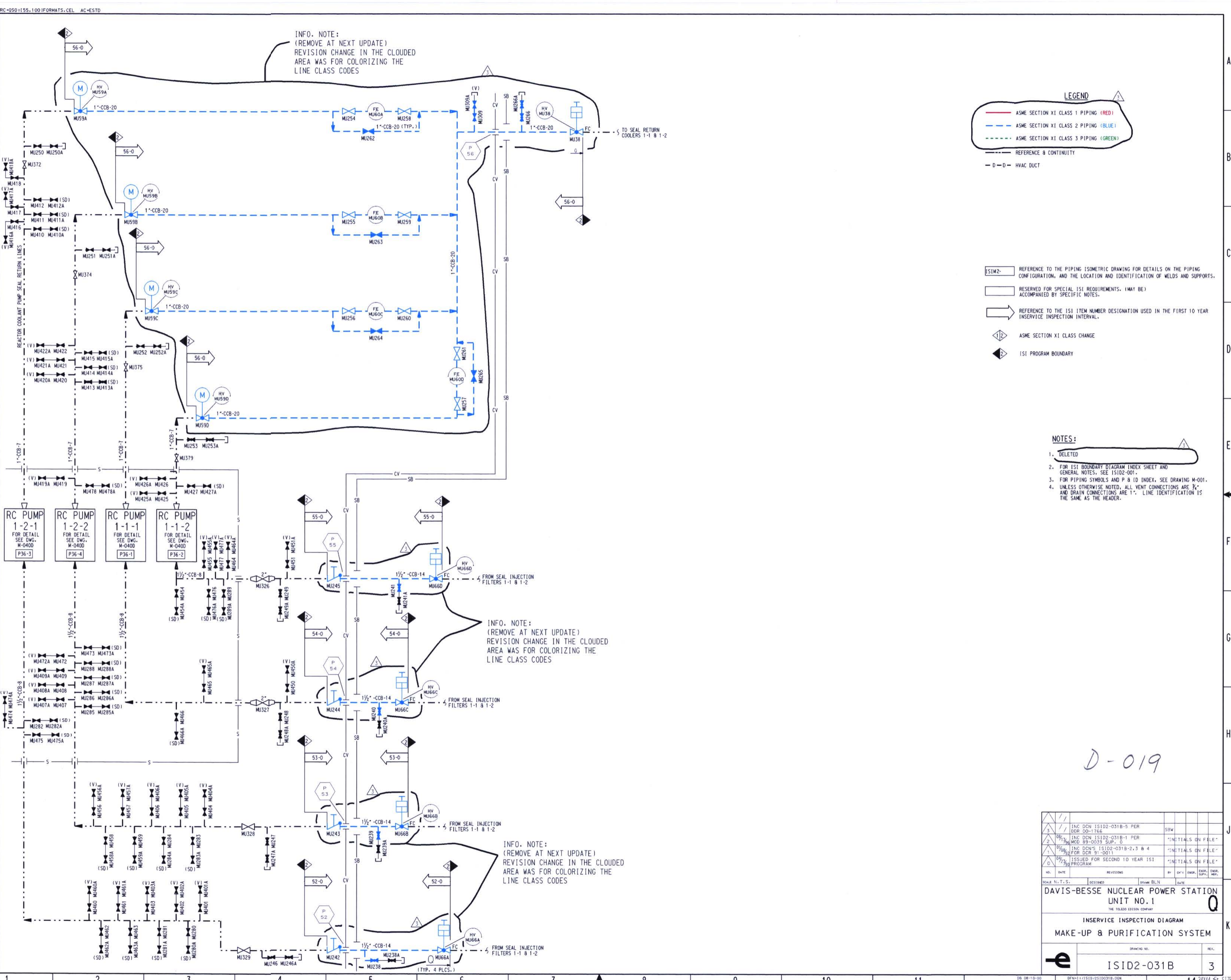


INFO. NOTE:  
(REMOVE AT NEXT UPDATE)  
REVISION CHANGE IN THE CLOUDED  
AREA WAS FOR COLORIZING THE  
LINE CLASS CODES



- ISIM2- REFERENCE TO THE PIPING ISOMETRIC DRAWING FOR DETAILS ON THE PIPING CONFIGURATION, AND THE LOCATION AND IDENTIFICATION OF WELDS AND SUPPORTS.
- RESERVED FOR SPECIAL ISI REQUIREMENTS. (MAY BE) ACCOMPANIED BY SPECIFIC NOTES.
- REFERENCE TO THE ISI ITEM NUMBER DESIGNATION USED IN THE FIRST 10 YEAR INSERVICE INSPECTION INTERVAL.
- ASME SECTION XI CLASS CHANGE
- ISI PROGRAM BOUNDARY

- NOTES:**
- DELETED
  - FOR ISI BOUNDARY DIAGRAM INDEX SHEET AND GENERAL NOTES, SEE IS102-001.
  - FOR PIPING SYMBOLS AND P & ID INDEX, SEE DRAWING M-001.
  - UNLESS OTHERWISE NOTED, ALL VENT CONNECTIONS ARE 3/4" AND DRAIN CONNECTIONS ARE 1". LINE IDENTIFICATION IS THE SAME AS THE HEADER.



D-019

NO.	DATE	REVISIONS	BY	CHK'D	ENGR.	DRWG. SUPV.	DATE
1							
2							
3							
4							
5							
6							
7							
8							
9							
10							
11							
SCALE: N.T.S.							
DESIGNED: DRAWN: BLN DATE:							
<b>DAVIS-BESSE NUCLEAR POWER STATION UNIT NO. 1</b> <small>THE HOLDEN ESTEY COMPANY</small>							
<b>INSERVICE INSPECTION DIAGRAM</b> <b>MAKE-UP &amp; PURIFICATION SYSTEM</b>							
<small>DRAWING NO.</small> IS102-031B <small>REV.</small> 3							