

INFO. NOTE:  
(REMOVE AT NEXT UPDATE)  
REVISION CHANGE IN THE CLOUDED  
AREA WAS FOR COLORIZING THE  
LINE CLASS CODES (REF. DCN 4)

INFO. NOTE:  
(REMOVE AT NEXT UPDATE)  
REVISION CHANGE IN THE CLOUDED  
AREA WAS FOR COLORIZING THE  
LINE CLASS CODES (REF. DCN 4)

INFO. NOTE:  
(REMOVE AT NEXT UPDATE)  
REVISION CHANGE IN THE CLOUDED  
AREA WAS FOR COLORIZING THE  
LINE CLASS CODES (REF. DCN 4)

INFO. NOTE:  
(REMOVE AT NEXT UPDATE)  
REVISION CHANGE IN THE CLOUDED  
AREA WAS FOR COLORIZING THE  
LINE CLASS CODES (REF. DCN 4)

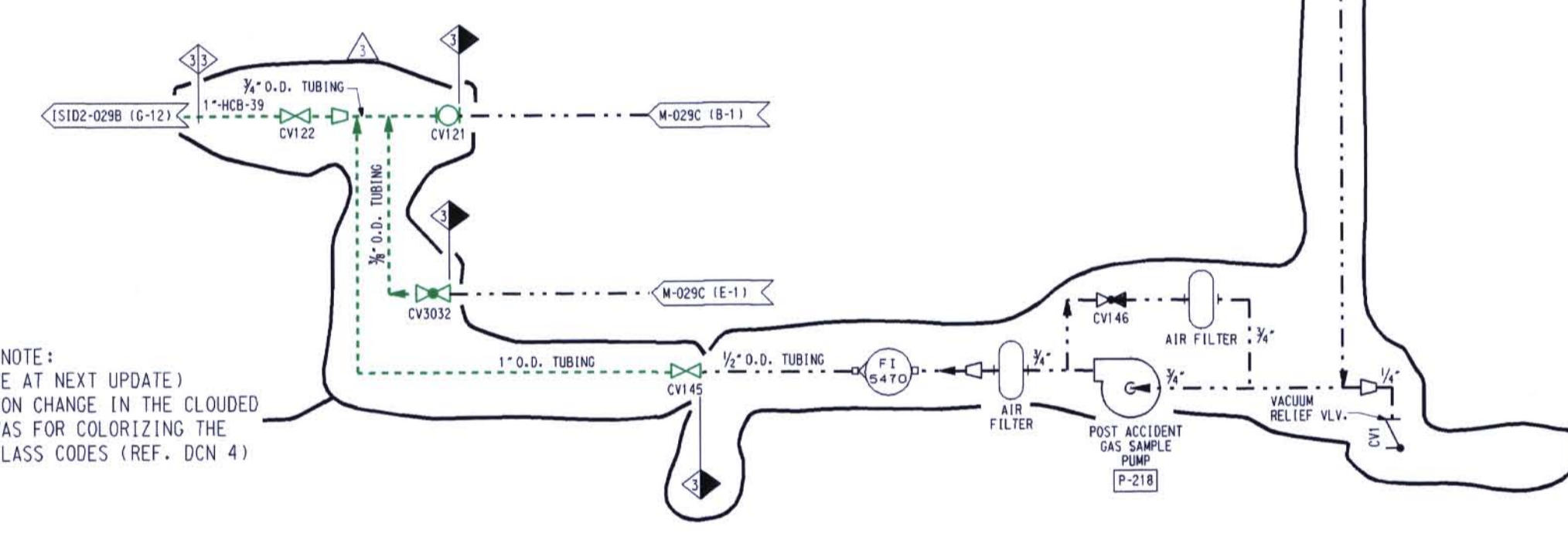
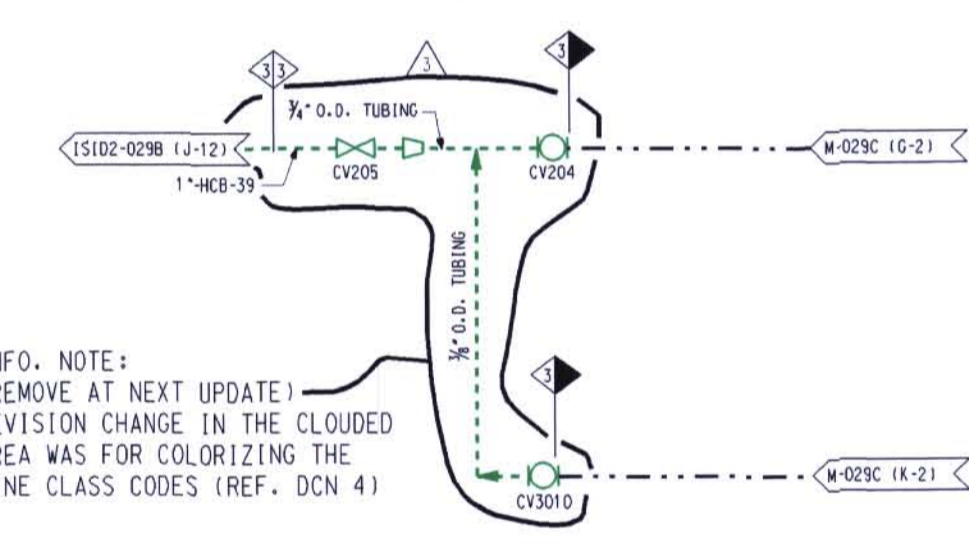
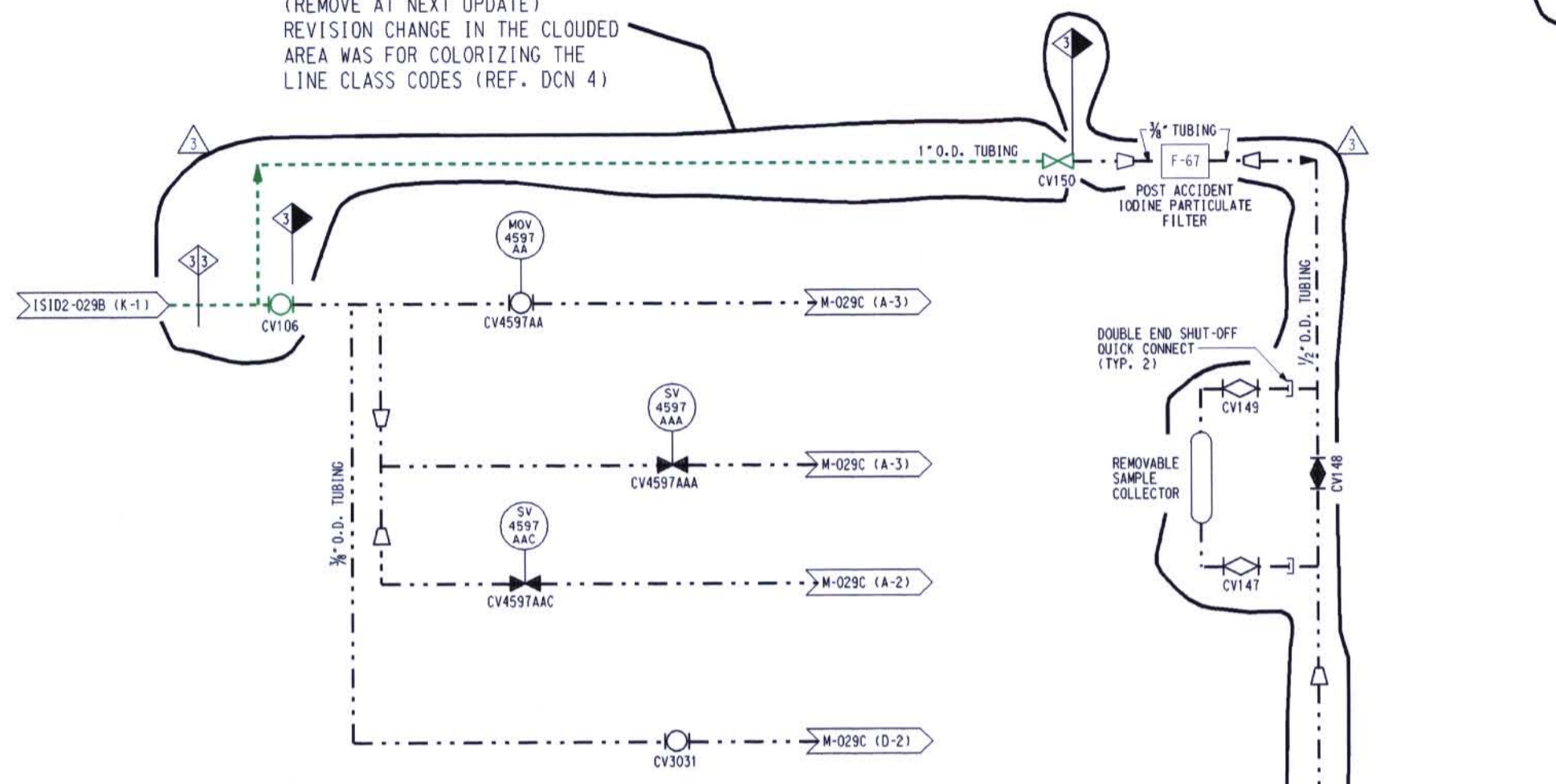
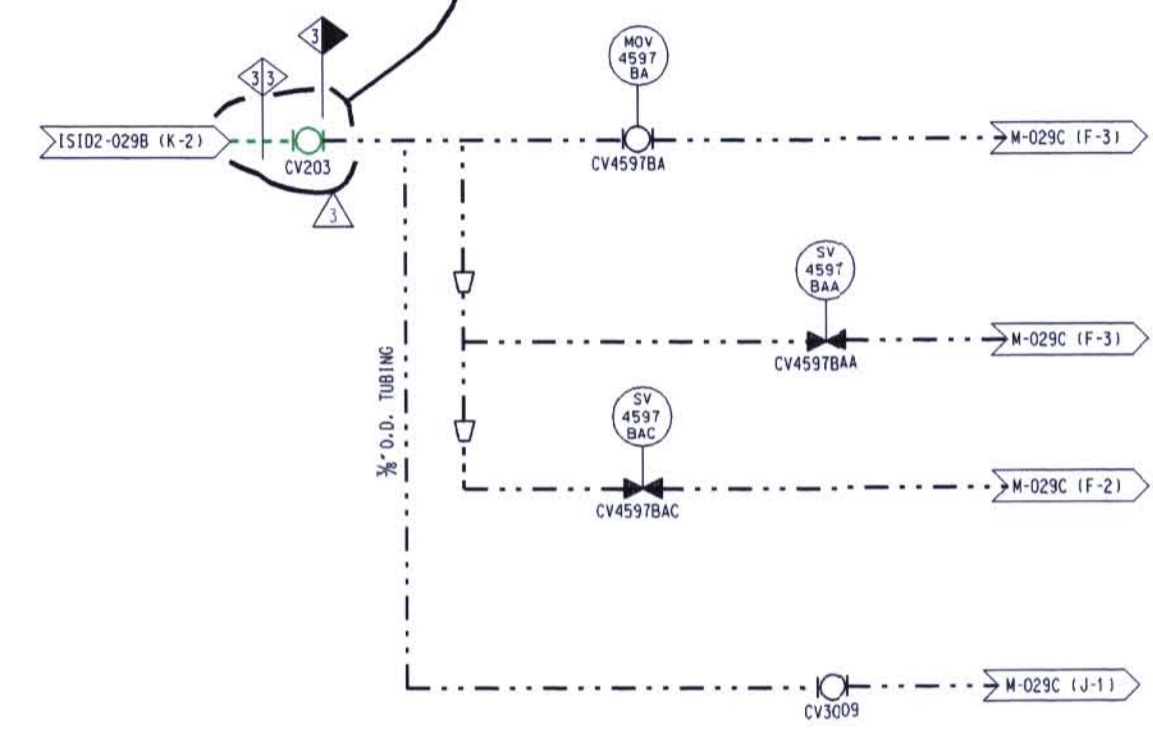
LEGEND

- ASME SECTION XI CLASS 1 PIPING (RED)
- ASME SECTION XI CLASS 2 PIPING (BLUE)
- - - ASME SECTION XI CLASS 3 PIPING (GREEN)
- - - REFERENCE & CONTINUITY
- D - D HVAC DUCT

- SIM2 REFERENCE TO THE PIPING ISOMETRIC DRAWING FOR DETAILS ON THE PIPING CONFIGURATION, AND THE LOCATION AND IDENTIFICATION OF WELDS AND SUPPORTS.
- RESERVED FOR SPECIAL ISI REQUIREMENTS. (MAY BE) ACCOMPANIED BY SPECIFIC NOTES.
- REFERENCE TO THE ISI ITEM NUMBER DESIGNATION USED IN THE FIRST 10 YEAR INSERVICE INSPECTION INTERVAL.
- ASME SECTION XI CLASS CHANGE
- ISI PROGRAM BOUNDARY

NOTES:

1. DELETED
2. FOR ISI BOUNDARY DIAGRAM INDEX SHEET AND GENERAL NOTES, SEE ISID2-001.
3. FOR PIPING SYMBOLS AND P & ID INDEX, SEE DRAWING M-001.
4. UNLESS OTHERWISE NOTED, ALL VENT CONNECTIONS ARE 3/4" AND DRAIN CONNECTIONS ARE 1". LINE IDENTIFICATION IS THE SAME AS THE HEADER.



D-014

1	INC. DCN ISID2-029C-3 PER DCR 89-0042 AND DCN ISID2-029C-4 PER DCR 90-1766	SBW	INITIALS ON FILE
2	INC. DCN ISID2-029C-2 PER DCR 97-1047		INITIALS ON FILE
3	INC. DCN ISID2-029C-1 FOR DCR 91-001		INITIALS ON FILE
4	ISSUED FOR SECOND 10 YEAR ISI PROGRAM	LPM TRM BUC	TWB MOP ECC
NO.	DATE	BY	CHKD. SUPER. ENGR. MOD.
SCALE: N.T.S.	DESIGNED	DRAWN: CB	DATE
<b>DAVIS-BESSE NUCLEAR POWER STATION</b>			
UNIT NO. 1			
THE TOLEDO EDISON COMPANY			
INSERVICE INSPECTION DIAGRAM			
CONTAINMENT AND PENETRATION ROOMS			
SHEET 2			
DRAWING NO.		REV.	
ISID2-029C		3	