

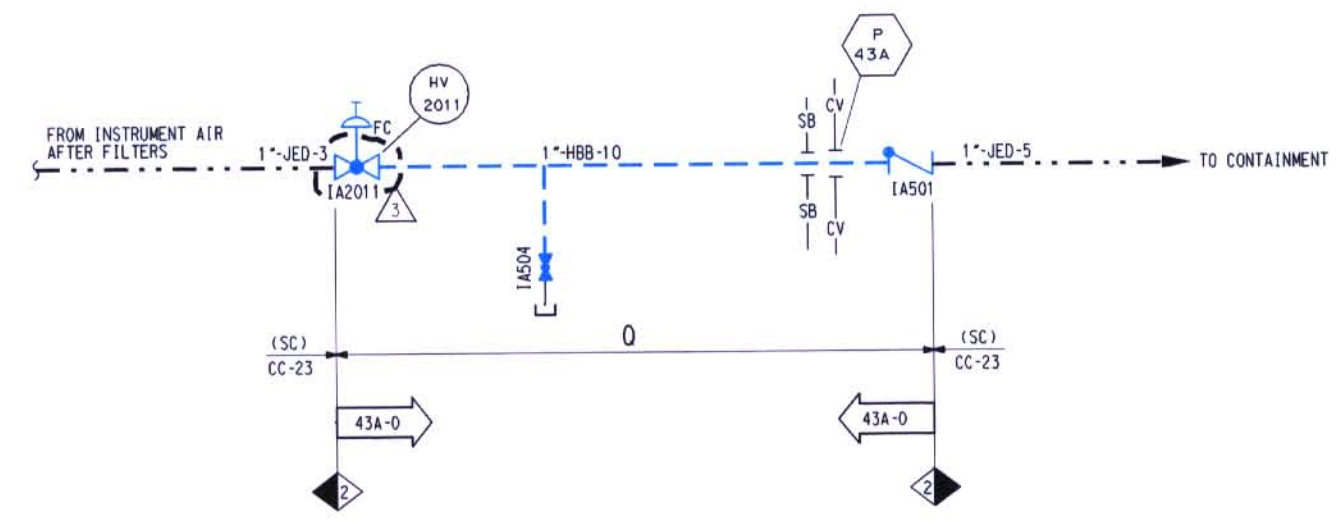
LEGEND

- ASME SECTION XI CLASS 1 PIPING (RED)
- ASME SECTION XI CLASS 2 PIPING (BLUE)
- ASME SECTION XI CLASS 3 PIPING (GREEN)
- REFERENCE & CONTINUITY
- 0 - 0 - HVAC DUCT

- ISIM2- REFERENCE TO THE PIPING ISOMETRIC DRAWING FOR DETAILS ON THE PIPING CONFIGURATION, AND THE LOCATION AND IDENTIFICATION OF WELDS AND SUPPORTS.
- RESERVED FOR SPECIAL ISI REQUIREMENTS. (MAY BE) ACCOMPANIED BY SPECIFIC NOTES.
- REFERENCE TO THE ISI ITEM NUMBER DESIGNATION USED IN THE FIRST 10 YEAR INSERVICE INSPECTION INTERVAL.
- ASME SECTION XI CLASS CHANGE
- ISI PROGRAM BOUNDARY

NOTES:

1. DELETED
2. FOR ISI BOUNDARY DIAGRAM INDEX SHEET AND GENERAL NOTES, SEE ISID2-001.
3. FOR PIPING SYMBOLS AND P & ID INDEX, SEE DRAWING M-001.
4. UNLESS OTHERWISE NOTED, ALL VENT CONNECTIONS ARE 3/4" AND DRAIN CONNECTIONS ARE 1". LINE IDENTIFICATION IS THE SAME AS THE HEADER.



D-008

NO.	DATE	REVISIONS	BY	CHK	ENGR.	ENGR. SUPV.	ENGR. MGR.
1		INC. DCN ISID2-015A-4 PER DDR 01-1685 B GEN. UPDATE CORRECT REV. 2 REVISION DESCRIPTION TO INC. DCN (NOT ISID DCN)	SBW				
2	08/21/00	INC. DCN ISID2-015A-2 PER DDR 00-1766					INITIAL QN FILE
3	12/19/01	INC. DCN ISID2-015A-1 FOR DCR 91-0011					INITIAL QN FILE
4	12/29/01	ISSUED FOR SECOND 10 YEAR ISI PROGRAM	CB	MFF	JDE	MGP	ECC
SCALE: N. T. S.							
DESIGNED:		DRAWN: CB		DATE:			
DAVIS-BESSE NUCLEAR POWER STATION UNIT NO. 1							
INSERVICE INSPECTION DIAGRAM INSTRUMENT AIR SYSTEM							
DRAWING NO. ISID2-015A						REV. 3	