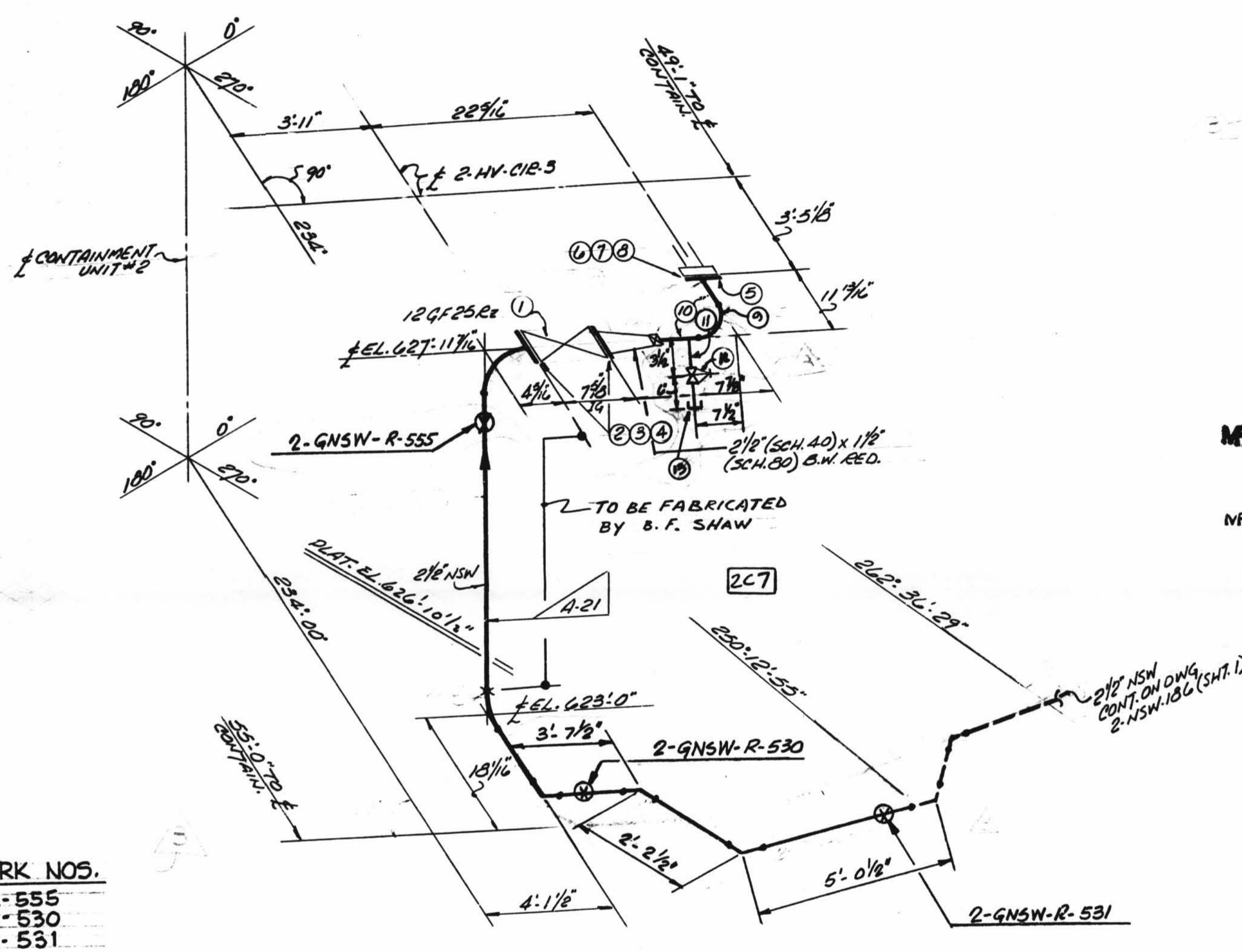
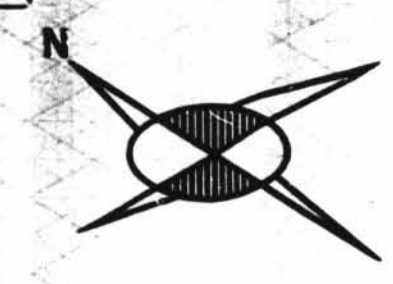


70500
15



SUPPORT MARK NOS.
2-GNSW-R-555
R-530
R-531

INDICATES LOCATION OF PIPE SUPPORT AND SUPPORT DETAIL NUMBER

SUPPORT MARK NUMBERS SHOWN ARE FOR GENERAL AND SEQUENTIAL LOCATION OF SUPPORTS ONLY FOR EXACT LOCATIONS SEE PIPE SUPPORT DETAIL

SIZE	QUAN.	FW
2 1/2	21	2
1 1/2	2	1

ISO SHT. NO. 2PL3

QSL	ITEM	QTY.	SIZE	MATERIAL DESCRIPTION	TAG NO. OR ASTM MATL.	HEAT NO.
01	1	1	2 1/2	125# C.I. FLGD. GATE VA.	12525R2	
	2	2	2 1/2	1/2 THK. COMP. ASBESTOS GASK.		
	3	3	3" LG. HEX HD. MACH. BOLT	A-307GR.B		
	4	3	HEAVY HEX NUTS (CLR. TOL)			
	5	1	150# RE. S.W. FLANGE	A-181		
	6	4	2 1/2 LG. HEX HD. MACH. BOLT	A-307GR.B		
	7	4	HEAVY HEX NUTS (CLR. TOL)			
	8	1	1/2 THK. COMP. ASBESTOS GASK.			
	9	1	3000# S.W. C.S. 90° ELL.	A-181		
	10	1	1 1/2" PIPE (SCH. 80) SMLS. C.S.	A-181GR.B		
	11	1	1" PIPE (SCH. 80) SMLS. C.S.			
	12	1	1" 3000# S.W. GLOBE VALVE, C.S.	Y100GR2		
	13	1	1" 3000# THRD. CAP, S.W., C.S.	A-181		

REVISION RECORD			DESCRIPTION	
NO.	DATE	CHKD.		
1	5-24-76	R.H. H.C.	REVISED FAB. RESPONSIBILITY OF SPOOL 2-NSW-186-7.	
2	6/1/76	NEW	PER EDM MC-0522 ADDED AS BUILT DIMS AND REVISED PIPING - DOTTED LINE INDICATES AS BUILT.	
3	7/12/76	EDB CON LB	TO REFLECT AS-FOUND CONDITIONS FOR RPC-DC-12-3010 PER FWR #750 REV. 1; ADDED: 1" DRAIN, CAP, DIMS. & ITEM 11-13 ON B.M. REVISED: PIPE CONFIG. TO SHOW AS-BUILT. ADDED: SUPPORT MARK NOS. & SUPERSEDES HGR. 150. NO. 2-GNSW-186 SH. NO. 2.	NO FIELD ACTION RES'D.

D-41B

2-NSW-186 (Sheet 2 of 2)
Instrument Room Ventilation
Unit 3 Supply Line

DESIGN SPEC. DCC PM 102 QCS			HANGER SEISMIC CLASS II			TEST REQUIREMENTS N/A			MATERIAL CLASS A-21			
PIPE			FITTINGS			TESTING			ADDITIONAL			
A-52	A-104	A-374	A-105	A-234	A-182	N.D.T.	N/A					
STD.	XY	XXY	10	20	30	40	60	80	100	120	140	160
SMLS			WIDD			PRESSURE TEST						
						MED.			PRESS. DURATION			

POUR/ZONE No. 227	FLOW DIAGRAM 2-3114A
REQUIRED COMPLETION DATE	Q.S.L. 81
FABRICATED BY TUBECO	WELD PROCEDURE
NPS DESIGNS INC. NEW YORK, N.Y.	LIVSEY & COMPANY, INC. INDIANA & MICHIGAN ELECTRIC CO. DONALD C. COOK NUCLEAR PLANT
FABRICATOR NOTE: FABRICATION MUST CONFORM TO LATEST A.E.P. ARRGT. DWGS.	DWN: AH DATE: 8/1/76 ISSUED: 8/1/76 REF. DWG. 2-5702
	CONTAINMENT #2 DWG. NO. 2-NSW-186 SHT. 20 OF 2