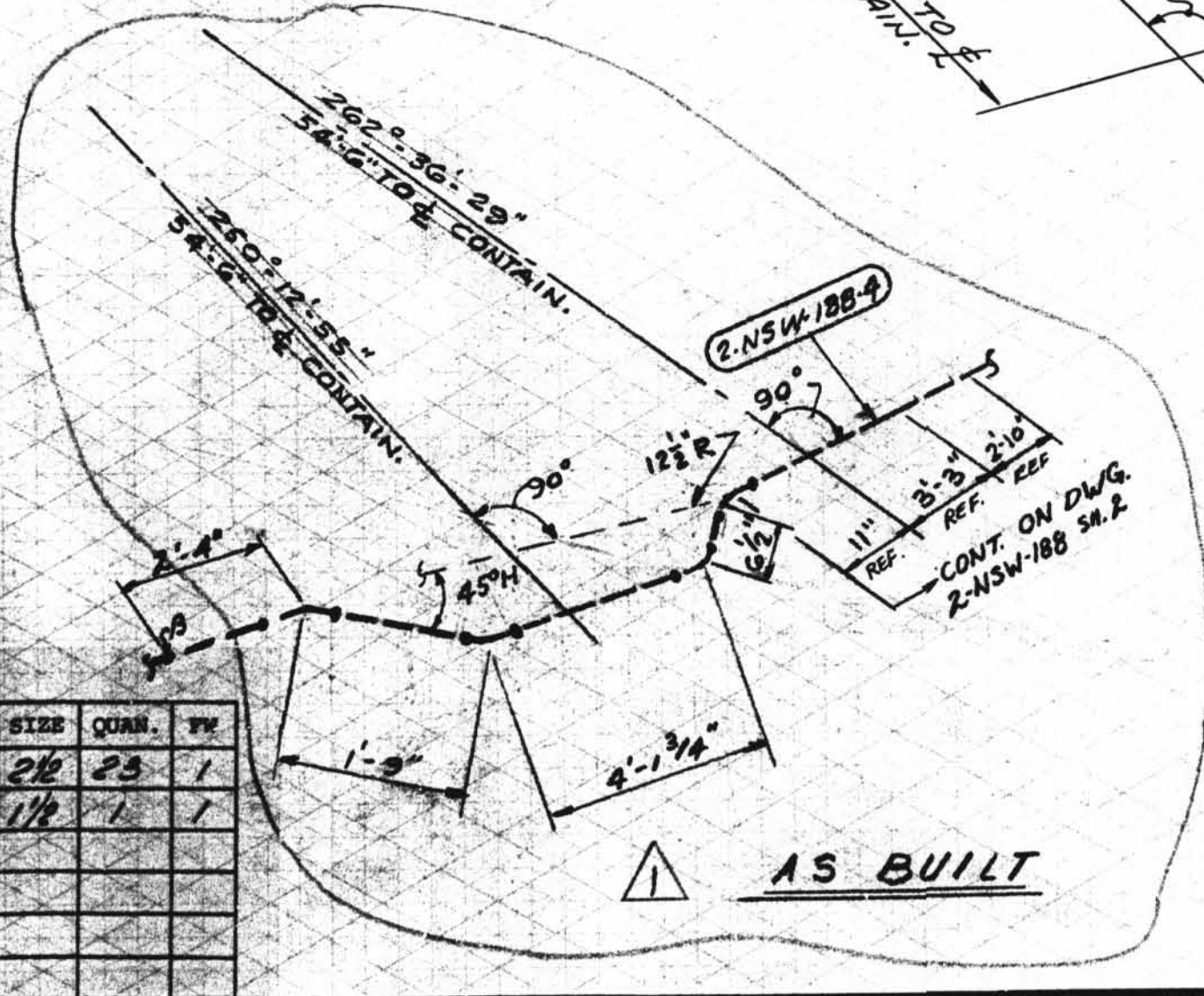
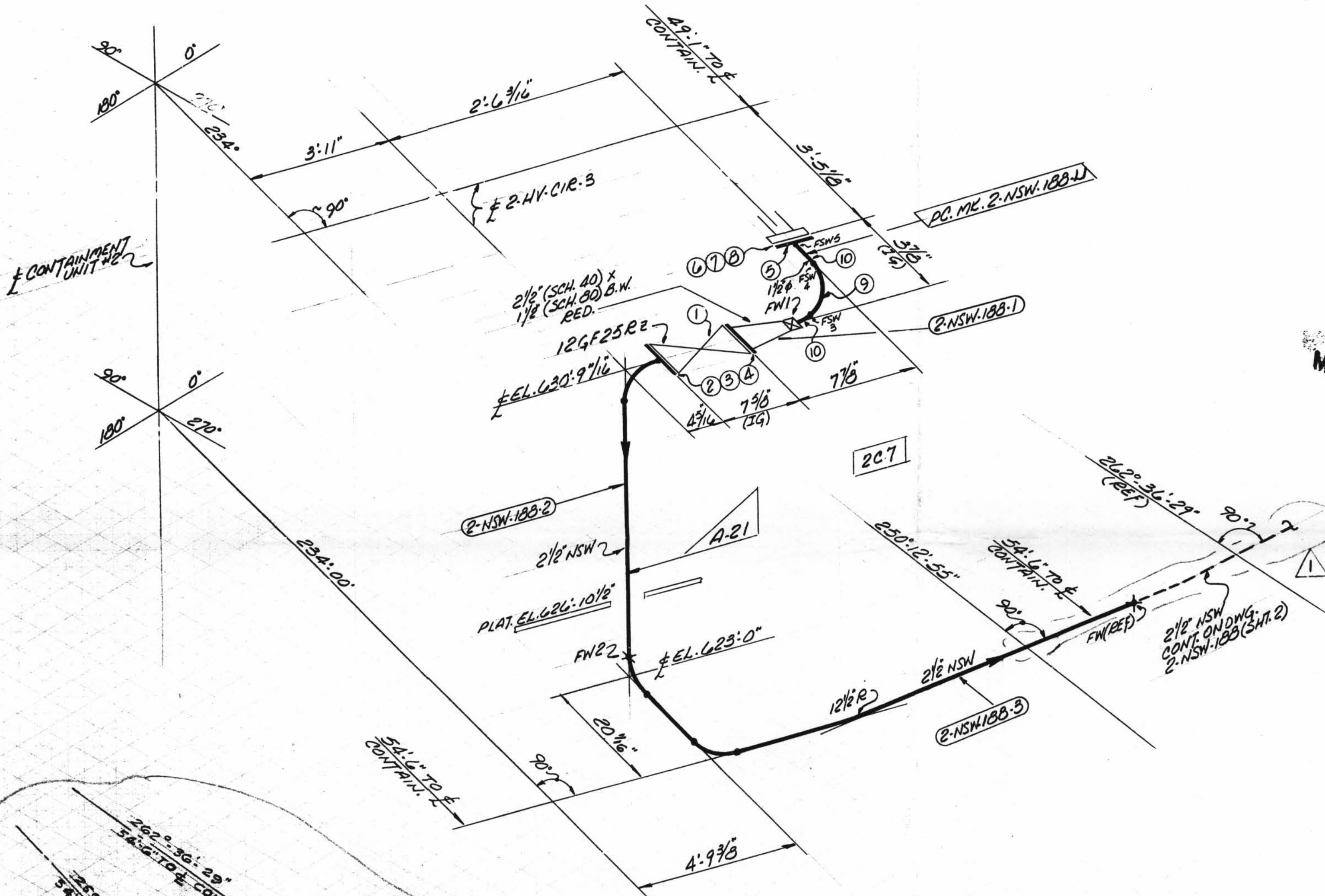
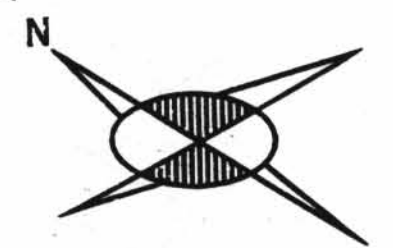


TOTAL
FW 2



SITE FABR. PIECE MARKS 2-NSW-188-L1
RD.# PIECE MARKS 2-NSW-188-1
2-NSW-188-2
2-NSW-188-3

D-39A

2-NSW-188 (Sheet 1 of 2)
Instrument Room Ventilation
Unit 3 Return Line

ISO SHT. NO. 2865									
QSL	ITEM	QTY.	SIZE	MATERIAL DESCRIPTION	TAG No. OR ASTM MAT'L.	HEAT NO.			
01	1	1	2 1/2"	125" O.I. FLGD. GATE VALVE	12GF25E2				
	2	2	2 1/2"	1/16" THK. COMP. ASD. GASKET					
	3	8	3/8"	3" LG. HEX HD. MACH. BOLT	A-307 GR. B				
	4	8	3/8"	HEAVY HEX NUTS (CL. 2 TOL.)					
	5	1	1 1/2"	150" R.F. S.W. FLANGE	A-181 GR. 2 OR II				
	6	4	1 1/2"	2 1/4" LG. HEX HD. MACH. BOLT	A-307 GR. B				
	7	4	1 1/2"	HEAVY HEX NUTS (CL. 2 TOL.)					
	8	1	1 1/2"	1/16" THK. COMP. ASD. GASKET	A-181 GR. 2 OR II				
	9	1	1 1/2"	3000" S.W. C.S. 90° ELL.	A-181 GR. 2 OR II				
	10	2000	1 1/2"	PIPE (SCH. 80) S.M.S. C.S.	A-106 GR. B				

REVISION RECORD		
NO.	DATE	DESCRIPTION
1	11/30/78	PER RDM MC-0582 ADDED AS BUILT DIMS. AND REVISED PIPING DOTTED LINE INDICATES AS BUILT.

DESIGN SPEC. DCRPM 102 QES	A.P. WORKING POINT	B.B.E. BEVEL BOTH ENDS	FW FIELD WELD	FIELD WELD
HANGER SEISMIC CLASS II	T.S.E. THREAD ONE END	P.O.E. PLAIN ONE END	H HORIZONTAL	O AUTOMATIC SHOP WELD
TEST REQUIREMENTS N/A	T.S.E. THREAD BOTH ENDS	P.S.E. PLAIN BOTH ENDS	V VERTICAL	M MANUAL SHOP WELD
MATERIAL CLASS A-21 SPEC. 104	S.O.E. SEVEL ONE END	S.O.S. SHAPE ONE END	SW SHOP WELD	VERIFY DIMENSION IN FIELD
	T.O.P. TOP OF PIPE ELEV.	B.O.P. BOTTOM OF PIPE ELEV.	FW FIELD SHOP WELD	
	Q.L. MATERIAL QUALITY REQUIREMENTS	T.L. TRUE LENGTH		

PIPE		FITTINGS			TESTING			ADDITIONAL				
A-33	A-376	A-312	A-103	A-234	A-182	N.D.T.	M.T.	P.T.	R.T.	U.T.		
STD.	XY	XXY	10	20	30	40	60	80	100	120	140	160
SMLS	WLD											

POUR/ZONE No. **227** FLOW DIAGRAM **2-3112A**
 REQUIRED COMPLETION DATE **Q.S.L. 01**
 FABRICATED BY **TUBECO** WELD PROCEDURE _____

NPS DESIGNS INC.
NEW YORK, N.Y.

LIVSEY & COMPANY, INC.
INDIANA & MICHIGAN ELECTRIC CO.
DONALD C. COOK NUCLEAR PLANT

FABRICATOR NOTE:
FABRICATION MUST CONFORM TO LATEST A.E.P. ARRGT. DWGS.

DWN. **MA** DATE **3/12** CONTAINMENT # **2**
 CKD. **MA** DATE **3/12** DWG. NO. _____
 ISSUED **2-NSW-188** 1
 REF. DWG. **2-5102** SHT. 1 OF 2