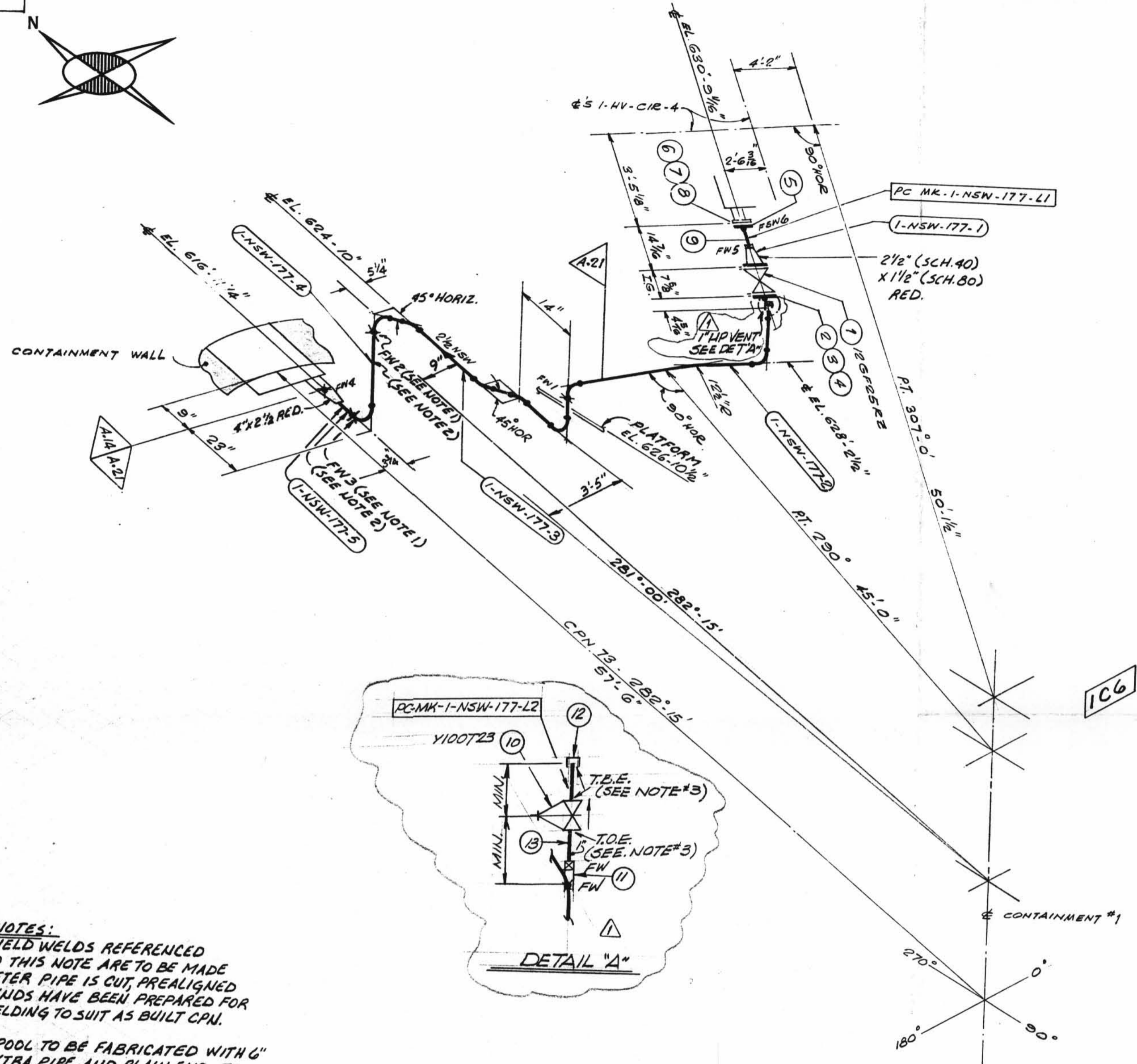
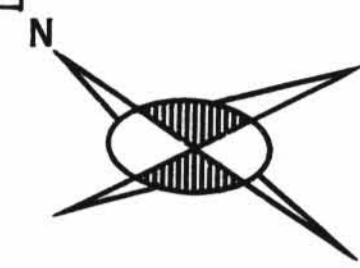


TOTAL FW



- NOTES:**
1. FIELD WELDS REFERENCED TO THIS NOTE ARE TO BE MADE AFTER PIPE IS CUT, PREALIGNED & ENDS HAVE BEEN PREPARED FOR WELDING TO SUIT AS BUILT CPN.
  2. SPOOL TO BE FABRICATED WITH 6" EXTRA PIPE AND PLAIN END, TO FACILITATE INSTALLATION.
  3. USE CRANE 425-A COMPOUND OR GRINNELL 1678 ON ALL THREADED CONNS.

SIZE	QUAN.	FW
4"	1	1
2 1/2"	33	3
1 1/2"	1	1
1"	1	2

DESIGN SPEC.		SEE		TESTING	
A-14	DESIGN SPEC. DCCPM 103 QCN	DESIGN	DESIGN	N.D.T. SEE DESIGN CODE STAMP	
HANGER SEISMIC CLASS I		CODE		M.T. P.T. R.T. U.T.	
TEST REQUIREMENTS QL-4		STAMP		PRESSURE TEST	
WELD PROCEDURE QSL-04		PIPE		MED. PRESS. DURATION	
TESTING 100% RT. & N.		FITTINGS		ADDITIONAL	
A-21		A-376 A-312		A-105 A-234 A-182	
DESIGN SPEC. DCCPM 102 QCS		A-106 A-376 A-312		A-403 A-181	
HANGER SEISMIC CLASS II		GR. B		PRESSURE TEST	
TEST REQUIREMENTS QL-N/A		STD. XY XXY 10 20 30 40 60 80 100 120 140 160		MED. PRESS. DURATION	
WELD PROCEDURE QSL-01		SMLS WLD		MED. PRESS. DURATION	
TESTING N/A		SMLS WLD		MED. PRESS. DURATION	

ISO SHT. NO. 2704

QCL	ITEM	QTY.	SIZE	MATERIAL DESCRIPTION	TAG No. OR ASTM MAT'L.	HEAT NO.
01	1	1	2 1/2"	125# C.I. FLGD. GATE VA.	126F25F2	
	2	2	1/8"	THK. FULL FACE COMP. ASBESTOS RUBBER BONDED GASKET		
	3	8	5/8"	3" LG. HEX. HD. MACH. BOLT	A-307 GR. B	
	4	8	5/8"	HEAVY HEX. NUT CL. 2 TOL.		
	5	1	1 1/2"	150# R.F.S.W. FLG.	A-181 GR. I OR II	
	6	4	1/2"	2 1/4" LG. HEX. HD. MACH. BOLT	A-307 GR. B	
	7	4	1/2"	HEAVY HEX. NUT CL. 2 TOL.		
	8	1	1 1/2"	1/8" THK. FULL FACE COMP. ASBESTOS RUBBER BONDED GASKET		
	9	AS REQD.	1 1/2"	PIPE (SCH. 80) SMLS. C.S.	A-106 GR. B	
	10	1	1"	200# THD GLOBE VALVE BRONZE OR BRASS	Y100723	
	11	1	1"	3000# SW C.S. ELBOULET	A-181 GR. I OR II	
	12	1	1"	3000# THD C.S. CAP	A-181 GR. I OR II	
	13	AS REQD.	1"	PIPE (SCH. 80) SMLS C.S.	A-106 GR. B	

REVISION RECORD

NO.	DATE	BY	DESCRIPTION	REMARKS
1	3/20/78	JQ	REVISED BY N.D.S. DESIGN'S. ADDED ITEMS TO PAR. 13, TO CPN; LIVSEY SPOOL 1-NSW-177-L2, DETAIL A - NOTES TO SUIT A.E.P. ARRGT DWG 1-5702 REV. 7	FIELD ACTION

D-63

1-NSW-177  
Instrument Room Ventilation  
Unit 4 Return Line

POUR/ZONE No. 106	FLOW DIAGRAM 1-2-5114A
REQUIRED COMPLETION DATE	Q.S.I. SEE DESIGN
FABRICATED BY TUBECO	WELD PROCEDURE CODE STAMP
NPS DESIGNS INC. NEW YORK, N.Y.	LIVSEY & COMPANY, INC. INDIANA & MICHIGAN ELECTRIC CO. DONALD C. COOK NUCLEAR PLANT
FABRICATOR NOTE: FABRICATION MUST CONFORM TO LATEST A.E.P. ARRGT. DWGS.	DWN. S.G. DATE: 6-10-78 CONTAINMENT BLDG. CD: WP DATE: 7-5-78 DWG. NO. 1-NSW-177 ISSUED REF. DWG. 1-5702