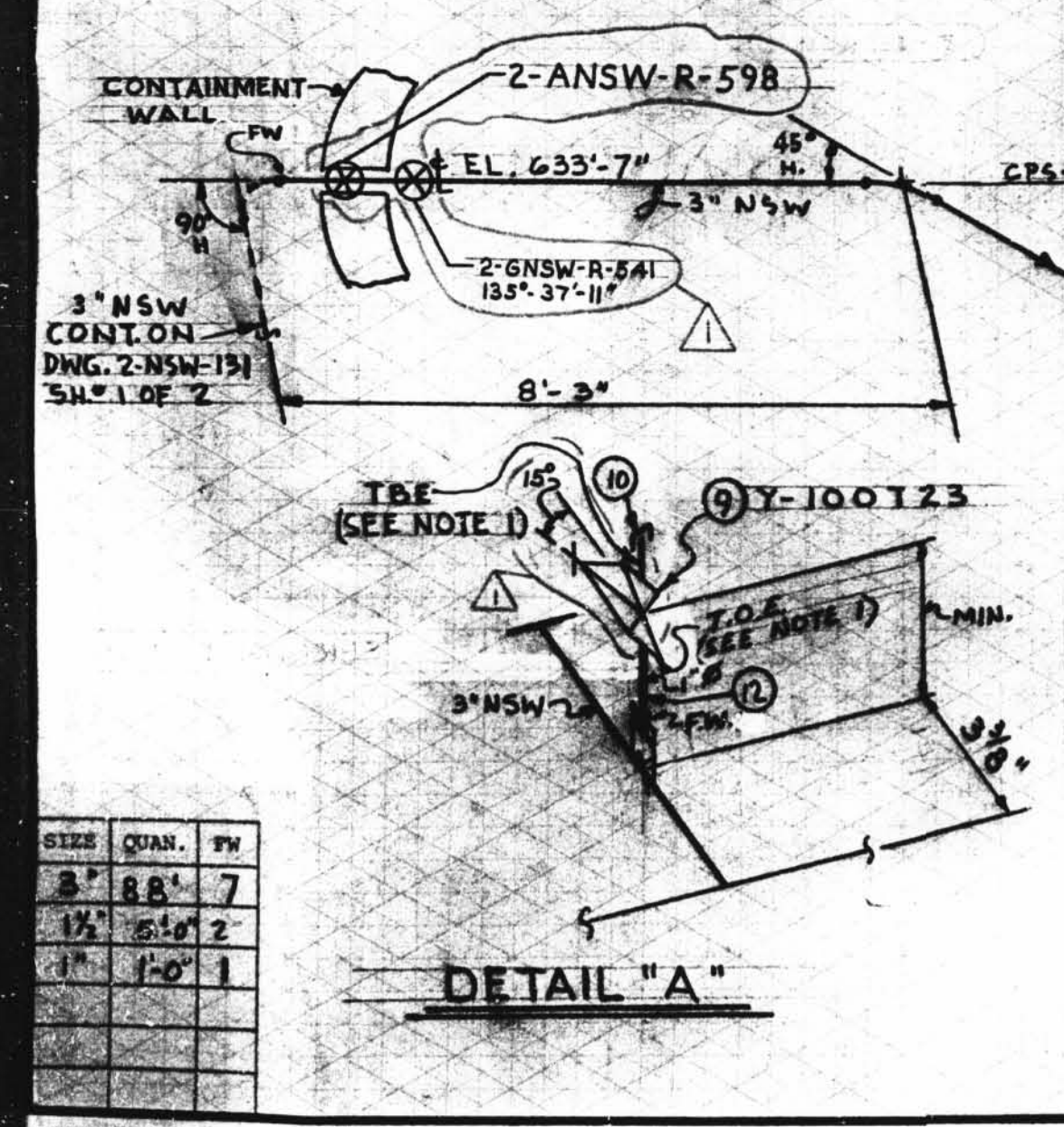


ISO SHT. NO. 3402

OSL	ITEM	QTY.	SIZE	MATERIAL DESCRIPTION	TAG No. OR ASTM MAT'L.	HEAT NO.
01	1	2	1 1/2"	150# RF SW. FLG. SGM. BO	A-106	
	2	2	1 1/2"	1/4" THK. 150# RF GASK. COMP. MASTICS RUBBER BONDED		
	3	8	1/2"	x 2 1/4" LG. HEX. HD. MACH. BOLTS	A-307GRB	
	4	8	1/2"	HEAVY HEX. NUTS CL 2 TOL.	A-307GRB	
	5	1	3"	125# C.I. FLG'D GATE VA.	176E03RZ	
	6	2	3"	1/4" THK. 150# RF GASK. COMP. MASTICS RUBBER BONDED		
	7	8	5/8"	x 3" LG. HEX. HD. MACH. BOLTS	A-307GRB	
	8	8	5/8"	HEAVY HEX. NUTS CL 2 TOL.	A-307GRB	
	9	1	1"	200# THD BRONZE GLOBE VA.	Y-100T23	
	10	1	1"	3000# C.S. TH'D CAP	A-181GR10R	
	11	2	1 1/2"	3000# C.S. SW 90° ELL	A-181GR10R	
	12	AS REQ'D	1"	PIPE (SCH. 80) SMLS C.S.	A-106 GRB	
	13	AS REQ'D	1 1/2"	PIPE (SCH. 80) SMLS C.S.	A-106 GRB	

REVISION RECORD

NO.	DATE	BY	DESCRIPTION	REMARKS
1	12/27/89	LB	TO REFLECT AS BUILT COND. FOR RFC DC 12-3010. ADDED SUPPORT MARK NO'S & SUPERSEDED HANGER ISO 2-ANSW-131A. REVISED IN W ORIENT OF ITEM 5. REVISED FLOW DIAGRAM REF. NO. 2.	NO FIELD ACTION REQ'D
		LB	PER RFC DC-02-2908 THIS DRAWING ISSUE IS FOR AS-BUILT INFORMATION ONLY. ADDED NEW FIELD WELDS. PER INFORMATION ON DWG. M-SGR-2-NSW-131-2 REV. 3, DCDR-047 & FIELD SKETCH FIG. NO. 16.	



NOTE:
1- USE CRANE 425A OR GRINNELL 1698 COMPOUND ON ALL THREADED CONN'S.

⊗ INDICATES LOCATION OF PIPE SUPPORT AND SUPPORT DETAIL NUMBER

SUPPORT MARK NUMBERS SHOWN ARE FOR GENERAL AND SEQUENTIAL LOCATION OF SUPPORTS ONLY FOR EXACT LOCATIONS SEE PIPE SUPPORT DETAIL

- HANGER MARK NO'S
- 2-GNSW-R-539
 - 2-GNSW-R-540
 - 2-ANSW-R-540A
 - 2-GNSW-R-541
 - 2-GNSW-R-542
 - 2-GNSW-R-561
 - 2-GNSW-R-562
 - 2-ANSW-R-598

D-48B
2-NSW-131 (Sheet 2 of 2)
Upper Containment Ventilation
Unit 2 Supply Line

SIZE	QUAN.	FW
3"	88	7
1 1/2"	60	2
1"	1	1

DESIGN SPEC. DCCPMIDQCS				TESTING			
HANGER SEISMIC CLASS 2				N/A			
MATERIAL CLASS A-21 SPEC. 104				N/A			
PIPE				FITTINGS			
A-33	A-106	A-376	A-312	A-105	A-234	A-182	N.D.T. N/A
GRB				ALT. P.T. R.T. U.T.			
STD.	XY	XY	10 20 30 40 60 80 100 120 140 160	A-403	A-181	PRESSURE TEST	
SMLS WIDD				MED. PRESS. DURATION			

POUR/ZONE No. 2C10, 2C3	FLOW DIAGRAM 2-5114A
REQUIRED COMPLETION DATE	Q.S.L. 01
FABRICATED BY TUBECO	WELD PROCEDURE
NPS DESIGNS INC. NEW YORK, N.Y.	LIVSEY & COMPANY, INC. INDIANA & MICHIGAN ELECTRIC CO. DONALD C. COOK NUCLEAR PLANT
FABRICATOR NOTE: FABRICATION MUST CONFORM TO LATEST A.E.P. ARRG. DWGS.	DWN. A.J.C. DATE 5/4/79
	CKD. WP DATE 2/25/82
	1" SUD
REF. DWG. 2-3744	DWG. NO. 2-NSW-131
2-5489A	SH. 2 OF 2