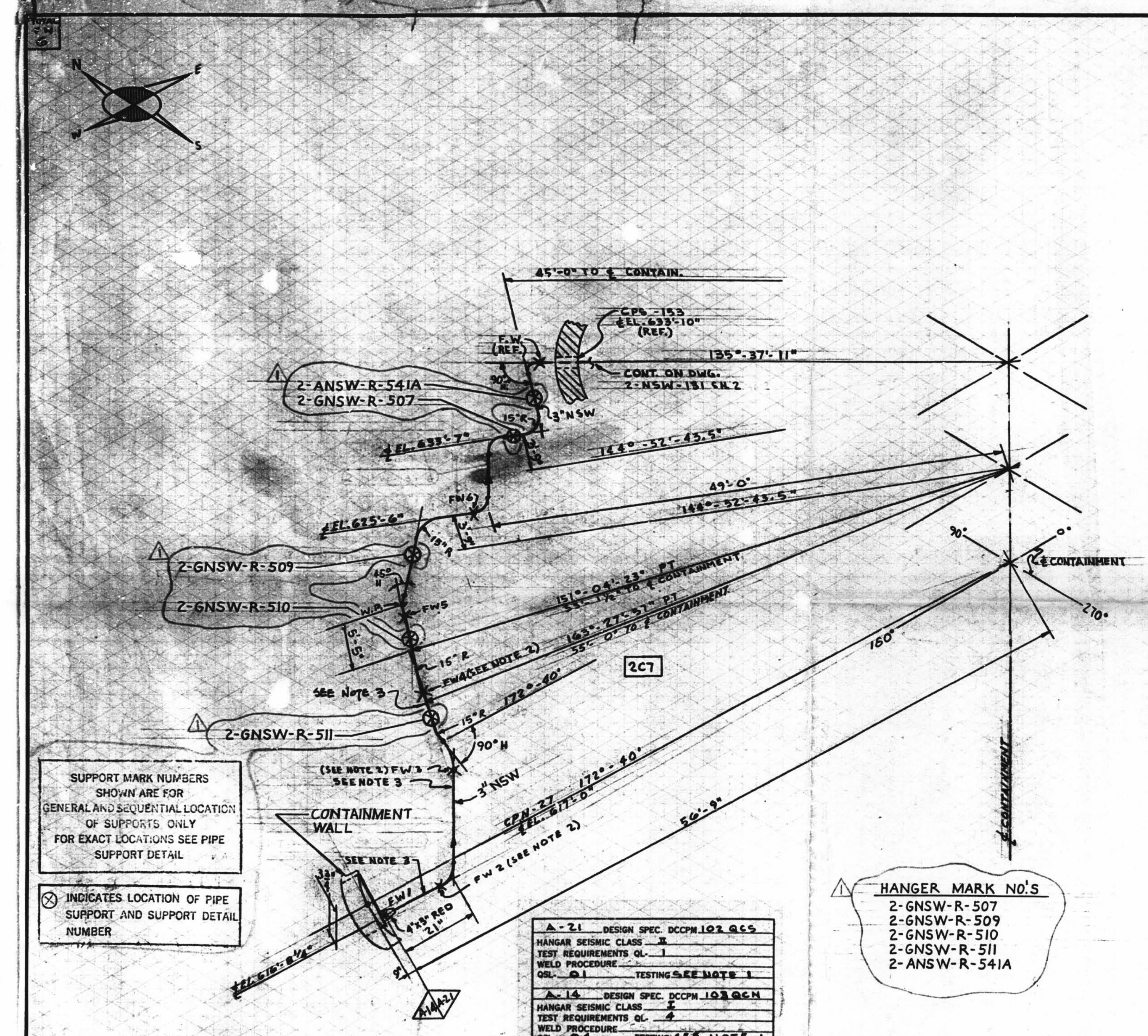


QSL	ITEM	QTY.	SIZE	MATERIAL DESCRIPTION	TAG NO. OR ASTM MAT'L.	HEAT NO.

REVISION RECORD					
NO.	DATE	DESCRIPTION	DRWN	CHK'D	REMARKS
1	12/13/59	PER REC DC-02-2908 THIS DRAWING IS FOR AS-BUILT INFORMATION ONLY. ADDED: NEW HGR. SUPPORT MARK NO. PER ADMIN. CHANGES ADDED: SUPPORT MARK NO'S & SUPERSEDE HGR 150. 2-GNSW-131 SHT. 1.	GJB	JSM	NO FIELD ACTION REQ'D.



SUPPORT MARK NUMBERS SHOWN ARE FOR GENERAL AND SEQUENTIAL LOCATION OF SUPPORTS ONLY FOR EXACT LOCATIONS SEE PIPE SUPPORT DETAIL

⊗ INDICATES LOCATION OF PIPE SUPPORT AND SUPPORT DETAIL NUMBER

- NOTES:**
- 1- FW1 ONLY TO BE RT 100% ALL OTHER FW N/A
 - 2- FIELD WELDS REFERENCED TO THIS NOTE ARE TO BE MADE AFTER PIPE IS CUT, PREALIGNED / ENDS HAVE BEEN PREPARED FOR WELDING TO SUIT AS BUILT CPN.
 - 3- SPOOL TO BE FABRICATED WITH 6" EXTRA PIPE AND PLAIN END, TO FACILITATE INSTALLATION.

A-21 DESIGN SPEC. DCCPN 102 QCS
 HANGER SEISMIC CLASS R
 TEST REQUIREMENTS QL-1
 WELD PROCEDURE
 QSL Q1 TESTING SEE NOTE 1

A-14 DESIGN SPEC. DCCPN 102 QCM
 HANGER SEISMIC CLASS I
 TEST REQUIREMENTS QL-4
 WELD PROCEDURE
 QSL Q4 TESTING SEE NOTE 1

HANGER MARK NO'S
 2-GNSW-R-507
 2-GNSW-R-509
 2-GNSW-R-510
 2-GNSW-R-511
 2-ANSW-R-541A

2-NSW-131 (Sheet 1 of 2)
 Upper Containment Ventilation
 Unit 2 Supply Line

SIZE	QUAN.	FW
4"	1	1
5"	5	5

DESIGN SPEC. DCCPN 102 QCS				DESIGN SPEC. DCCPN 102 QCM				DESIGN SPEC. DCCPN 102 QCS									
MATERIAL CLASS PIPE																	
A-21	A-106	A-375	A-312	A-105	A-234	A-182	FITTINGS		TESTING								
GR-D							N.D.T.			M.T.		P.T.		R.T.		U.T.	
PRESSURE TEST																	
MED. PRESS. DURATION																	

POUR/ZONE No. 2C7 FLOW DIAGRAM (2-51) 1A
 REQUIRED COMPLETION DATE Q.S. SEE DESIGN
 FABRICATED BY TUBECO WELD PROCEDURE CODE STAMP

NPS DESIGNS INC.
 NEW YORK, N.Y.

FABRICATOR NOTE:
 FABRICATION MUST CONFORM TO LATEST A.E.P. ARRGT. DWGS.

LIVSEY & COMPANY, INC.
 INDIANA & MICHIGAN ELECTRIC CO.
 DONALD C. COOK NUCLEAR PLANT

DWN: A.J.C. DATE: 5/22/59
 CRD: WP DATE: 5/22/59
 ISSUED
 REF. DWG. T-5489 A Sht. 1 of 2