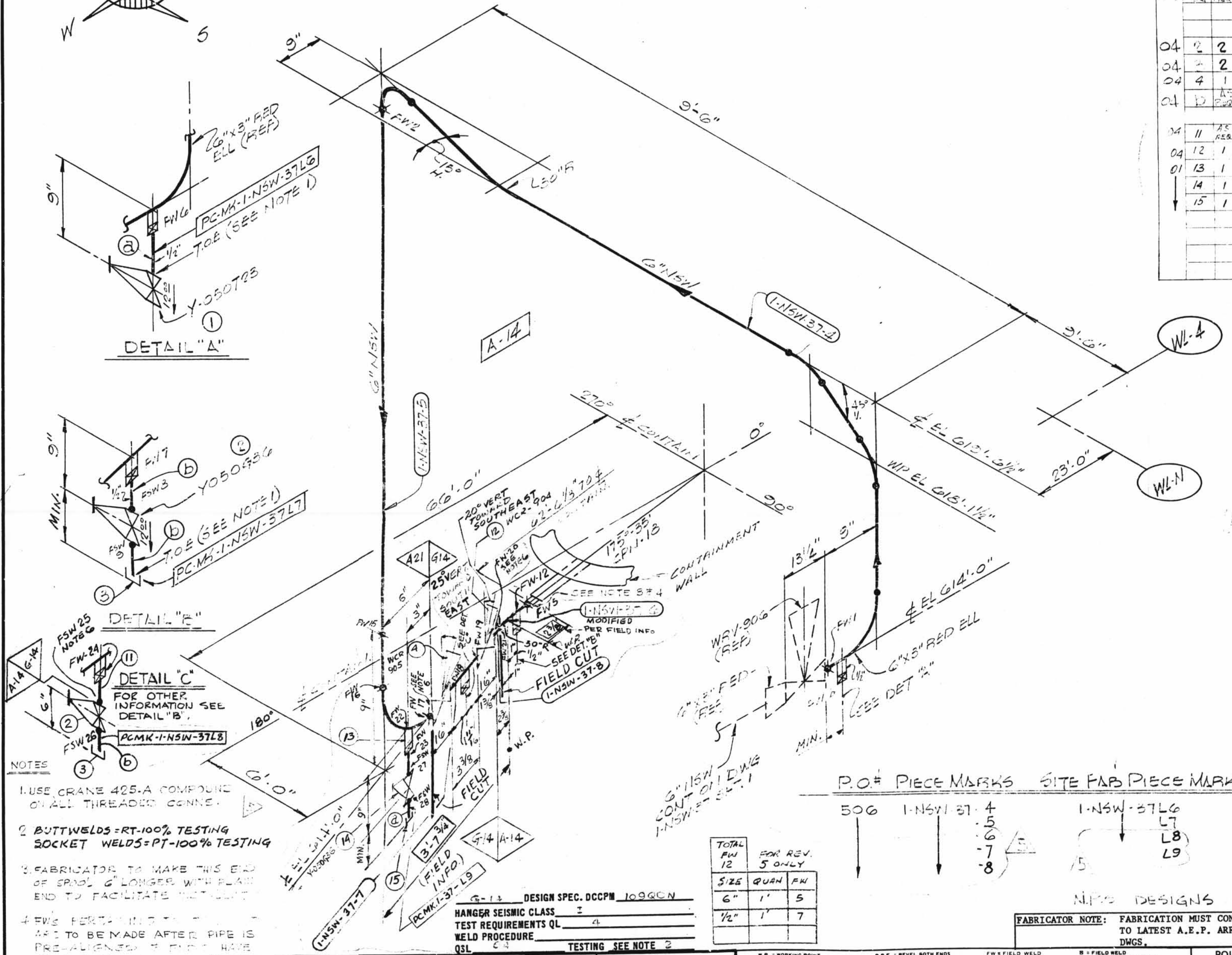
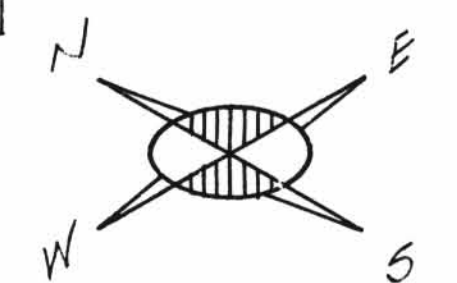


TOTAL FW 16



- NOTES
- USE CRANE 425-A COMPOUND ON ALL THREADED CONNS.
 - BUTTWELDS = RT-100% TESTING
SOCKET WELDS = PT-100% TESTING
 - FABRICATOR TO MAKE THIS END OF SPANL 6" LONGER WITH PLAIN END TO FACILITATE DETAILING
 - FW'S PERTAINING TO THIS UNIT TO BE MADE AFTER PIPE IS PRE-ALIGNED. IF FIELD HAS BEEN PREPARED THE UNITING TO BE AS BUILT FOR.
 - CARB. STL. 2" UNDER CS-2 CARB. STL. 2 1/2" UP. CS-1 OR CS-2
 - PROVIDE BI-METALLIC WELDS (STAINLESS STEEL-CARBON STEEL)
 - REMOVE BONNET ASSEMBLY BEFORE WELDING VALVE BODY TO PIPE LINE

A-14	DESIGN SPEC. DCCPM 10300N	DESIGN SPEC. SEE DESIGN
HANGER SEISMIC CLASS	4	DESIGN
TEST REQUIREMENTS	Q1	CODE
WELD PROCEDURE	SEE NOTE 5	STAMP
QSL	SEE NOTE 5	

TOTAL FW	FOR REV.	
12	5 ONLY	
SIZE	QUAN	FW
6"	1	5
1/2"	1	7

P.O.# PIECE MARKS SITE FAB PIECE MARKS

506	1-NSW-37-4	5
	1-NSW-37-5	6
	1-NSW-37-6	7
	1-NSW-37-7	8
	1-NSW-37-8	9

MATERIAL 150.547 No. 1794

QSL	ITEM	QTY.	SIZE	DESCRIPTION	TAG NO. OR ASTM MATL.	HEAT NO.
01	1	1	1/2"	200# BRONZE OR BRASS THREADED GLOBE VAL.	Y050723	
01	1	1	1/2"	PIPE (SCH 80, SMLS) CS	A-100 GR B	
04	2	2	1/2"	200# CS. SW GATE VALVE	Y050670	
04	2	2	1/2"	200# CS THRD CAP	A-181 GR II	
04	4	4	1/2"	B/W DIAPH. CONTROL VA. S.S.	WCR-905	
04	10	10	1/2"	PIPE (SCH 80, SMLS) CS	A-100 GR B	
04	11	11	1/2"	PIPE (SCH 40) SMLS S.S.	A-312 GR B-304	
04	12	1	6"	B/W DIAPH. CONTROL VA. S.S.	WCR-904	
01	13	1	1/2"	200# CS. HALF CPLG.	A-181 GR I OR II	
04	14	1	1/2"	600# CS. SW GATE VALVE	Y-050636	
04	15	1	1/2"	200# CS THRD CAP	A-181 GR I OR II	

REV.	DATE	BY	DESCRIPTION	REMARKS
1	12/8/71	SS GN	RELEASED PIPING ATCPN. ADDED: NOTES 3, 4 & 5; ITEM 4; WELD PROCEDURE; P.O.#; TOTAL NO. OF FW. PER DWG 1-5497-3.	FIELD ACTION/REQ'D.
2	7/14/75	YCB	REV'D: ITEM #2 Y050636 WAS CX050636 REV'D BY A.E.P.	NO ACTION REQ'D.
3	20-76	DR	REVISED BY A.E.P. DESIGN PER RFG-DC-12-2549 TO REFLECT AS BUILT WHEN CHECK VALVE WAS ADDED.	NO ACTION REQ'D.
4	2/2/78	H.B. LB	PER RFG-12-1430 DELETE ITEM 6 & ADD ITEM 7, 8, 9, 10 SEE DETAIL 'D'.	FIELD ACTION REQ'D.
5	1/13/82	A.G. DR	PER RFG-DC-12-2549 ADD'D PIPE SPEC G-14. DIM'S PCMK L-8, L-9, 7B-8, WELD BOX NOTES G & 7, FIELD WELDS PW 17 TO 24, FSN 25702B. ITEMS 11015 DELETED. ITEMS 6 TO 10 FROM B/M REVISED ITEM 4 IN B/M. MODIFIED 1-NSW-37-6	FIELD ACTION REQ'D.

LABOR COST CONTROL		LABOR COST CONTROL	
USE ONLY WITH		USE ONLY WITH	
PIPE SIZE		PIPE SIZE	
SCHEDULE		SCHEDULE	
TYPE		TYPE	
ISO START DATE		ISO START DATE	
ISO FINISH DATE		ISO FINISH DATE	
WORK OPERATION	LINE ITEM NUMBER	WORK OPERATION	LINE ITEM NUMBER
HANGER INST.		HANGER INST.	
ERECT		ERECT	
WELD		WELD	
RADIO-G - X-RAY		RADIO-G - X-RAY	
STRESS RELIEVE		STRESS RELIEVE	
MISC. WORK		MISC. WORK	

POUR/ZONE No. A-14

REQUIRED COMPLETION DATE

FABRICATED BY TUPCO

REVISION RECORD

NO.	DATE	DESCRIPTION
1		

1-NSW-37 (sheet 2 of 2)
Lower Containment Ventilation
Unit 2 Supply Line

LIVSEY & COMPANY, INC.
DONALD C. COOK NUCLEAR PLANT

DWN: WJP DATE: 7/10/77
CRD: GN DATE: 9/23/77

ISSUED
REF. DWG. 1-5497-3

AUXILIARY BLDG.
1-NSW-37-5
REV 5