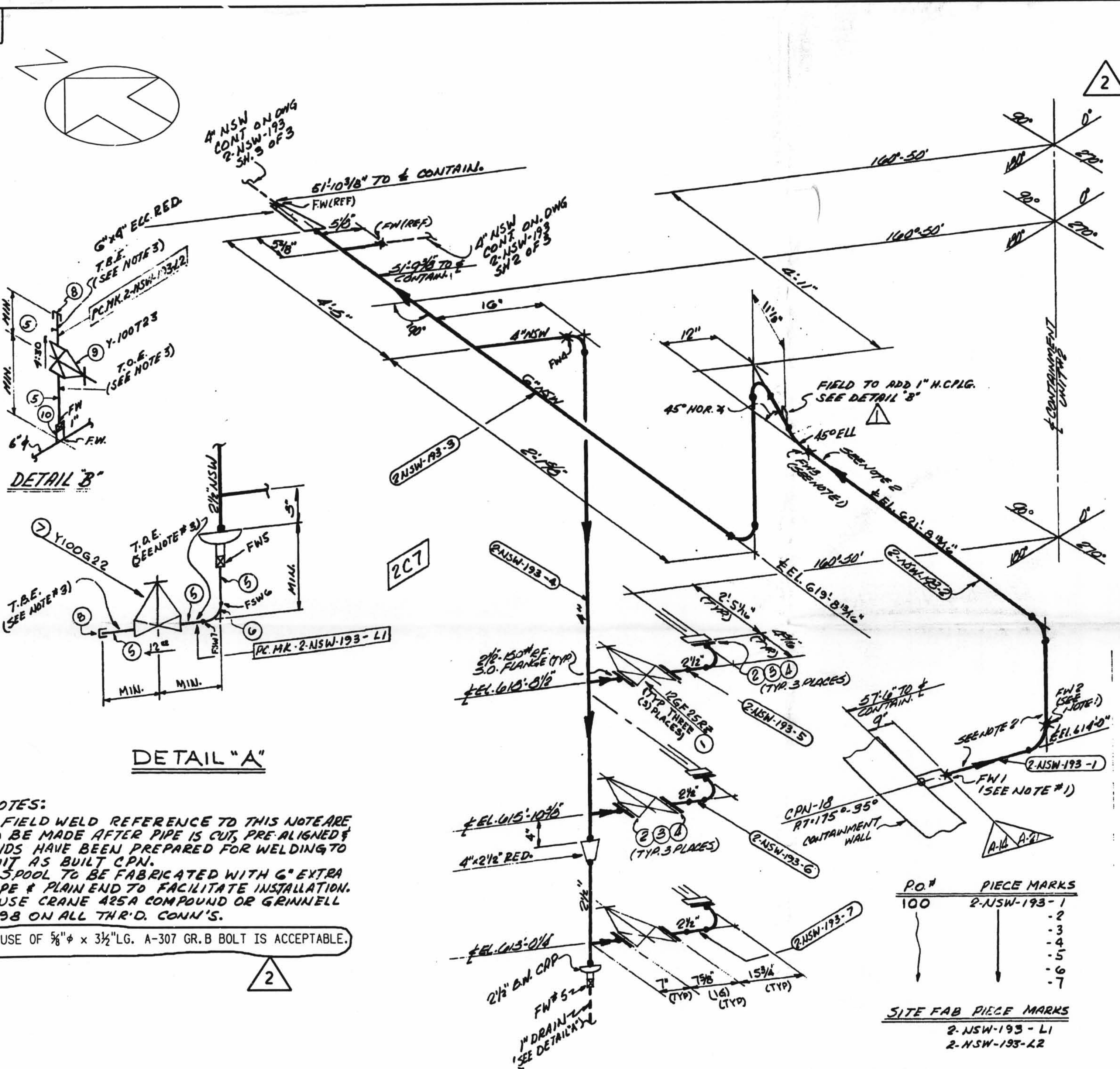


TOTAL FW



NOTES:
 1. FIELD WELD REFERENCE TO THIS NOTE ARE TO BE MADE AFTER PIPE IS CUT, PRE-ALIGNED & ENDS HAVE BEEN PREPARED FOR WELDING TO SUIT AS BUILT CPN.
 2. SPOOL TO BE FABRICATED WITH 6" EXTRA PIPE & PLAIN END TO FACILITATE INSTALLATION.
 3. USE CRANE 425A COMPOUND OR GRINNELL 1698 ON ALL THR'D. CONN'S.
 4. USE OF 5/8" φ x 3 1/2" LG. A-307 GR. B BOLT IS ACCEPTABLE.

SIZE	QUAN.	FW
6"	24	3
4"	6	1
2 1/2"	12	-
1"	2	3

MATERIAL SPEC.	DCCPM1030CN/DCCPM1020CS	W.P. = WORKING POINT	B.B.E. = BEVEL BOTH ENDS	FW = FIELD WELD	□ = FIELD WELD
HANGER SEISMIC CLASS	I, II	T.O.E. = TOP OF END	P.O.E. = PLAIN ONE END	H = HORIZONTAL	○ = AUTOMATIC SHOP WELD
TEST REQUIREMENTS	QL-4/ N/A	T.B.E. = THREAD BOTH ENDS	P.B.E. = PLAIN BOTH ENDS	V = VERTICAL	● = MANUAL SHOP WELD
MATERIAL CLASS	A-14/A-21	B.O.E. = BEVEL ONE END	S.O.E. = SHARP ONE END	SW = SHOP WELD	■ = VERIFY DIMENSION IN FIELD
PIPE		FITTINGS		S.M.S. = MATERIAL QUALITY REQUIREMENTS	
SA-53	SA-106	SA-376	SA-312	SA-105	SA-234
GR. B				SA-102	SA-182
STD.	XY	XXY	10	20	30
			40	60	80
			100	120	140
			160		
				SA-403	SA-181
FOR AS INSTALLED MATERIAL - SEE B.O.M. ABOVE					

INDIANA MICHIGAN POWER COMPANY
DONALD C. COOK
 NUCLEAR PLANT
 BRIDGMAN MICHIGAN

QSL	ITEM	QTY.	SIZE	DESCRIPTION	TAG No. OR ASTM MAT'L.
01	1	3	2 1/2"	125* C. I. GATE VA.	12GF25RZ
	2	9	2 1/2"	150* COMPR. ASBESTOS RUBBER BONDED FULL FACE 3/4" THK. GASK.	
	3	36	5/8" φ	3" LG. HEX HD. MACH. BOLT (SEE NOTE 4)	A-307, GR. B
	4	36	5/8" φ	HEAVY HEX NUT CLASS 2 TOL.	A-307, GR. B
	5	AS REQ'D	1"	PIPE (SCH. 80) SMLS C.S.	A-106, GR. B
	6	1	1"	90° ELBOW 3000* SW. C.S.	A-181 GR. I OR II
	7	1	1"	150* THR'D GATE VA. BRONZE OR BRASS	Y100G22
	8	2	1"	3000* THR'D C.S. CAP	A-181 GR. I OR II
	9	1	1"	200* THR'D BRASS OR BRONZE GLOBE VALVE	Y-100T23
	10	1	1"	3000* C/S S.W.H. CPLG	A-181 CR. I OR II

D-36A

2-NSW-193 (Sheet 1 of 3)
 Lower Containment Ventilation
 Unit 2 Supply Line

THIS DRAWING HAS BEEN CONVERTED FROM A MANUAL FORMAT TO THE IGS-SCANNED DRAWING FORMAT AND SUPERSEDES ALL PREVIOUS REVISIONS.
 ADDED : NOTE FOR ITEM 3 PER RFC 12-2769, AB-D02571, DCDR 10-10-1003
 GNL/PA/99

REV.	DATE	DESCRIPTION	FIELD STATUS
2	09/07/99	THIS DRAWING HAS BEEN CONVERTED FROM A MANUAL FORMAT TO THE IGS-SCANNED DRAWING FORMAT AND SUPERSEDES ALL PREVIOUS REVISIONS. ADDED : NOTE FOR ITEM 3 PER RFC 12-2769, AB-D02571, DCDR 10-10-1003	NO FIELD ACTION REQ'D.

CONTAINMENT BLDG #2
 DWG. No. 2-NSW-193
 SH 1 REV 2
 AEP SERVICE CORP.
 1 RIVERSIDE PLAZA
 COLUMBUS, OH 43215