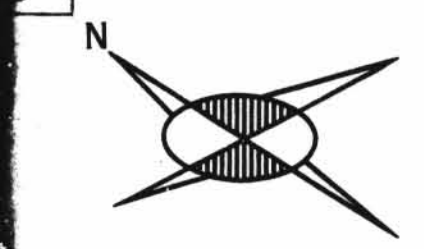
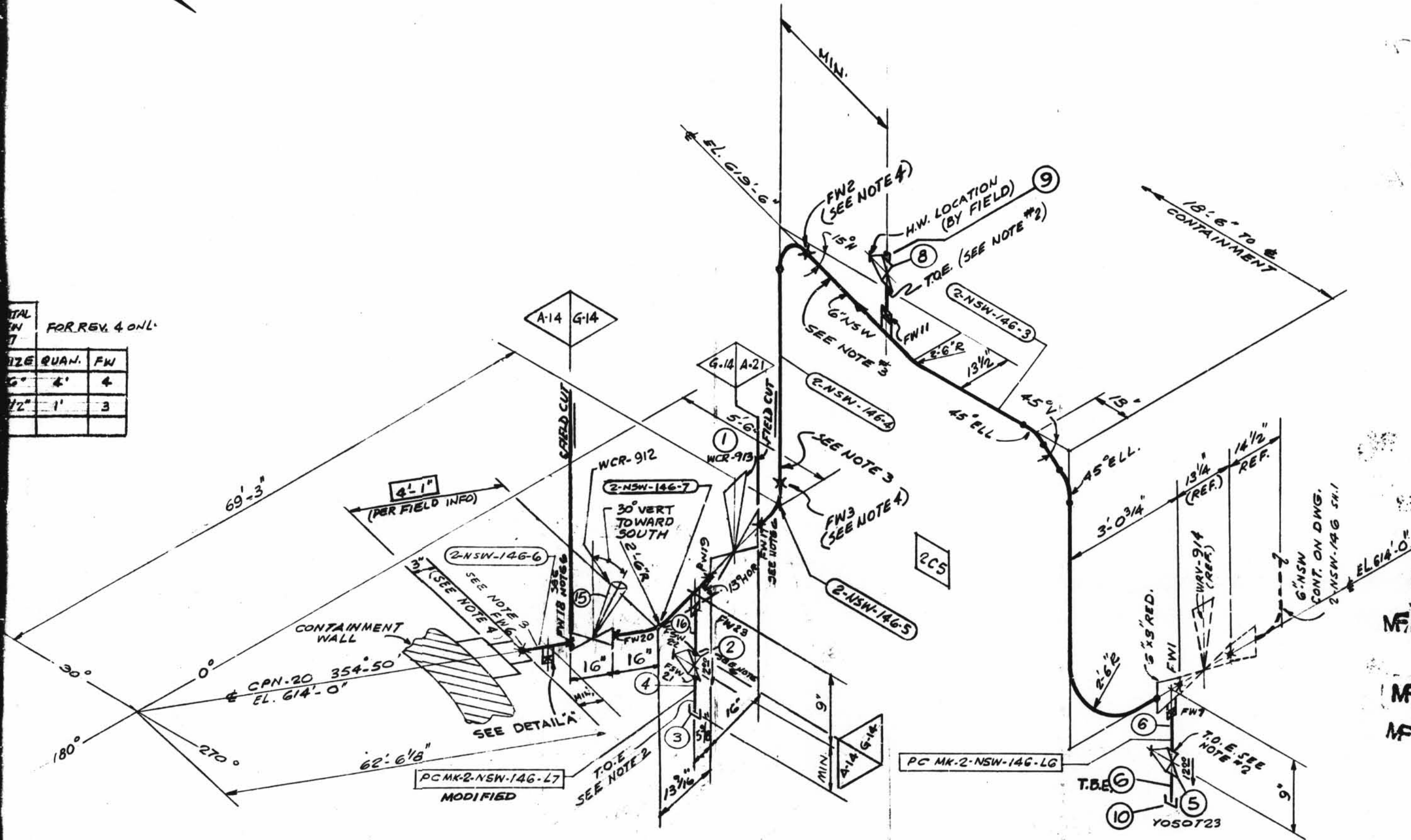


ISO SHT. NO. 2129



SIZE	QUAN.	FW
6"	4	4
1/2"	1	3



NOTES:

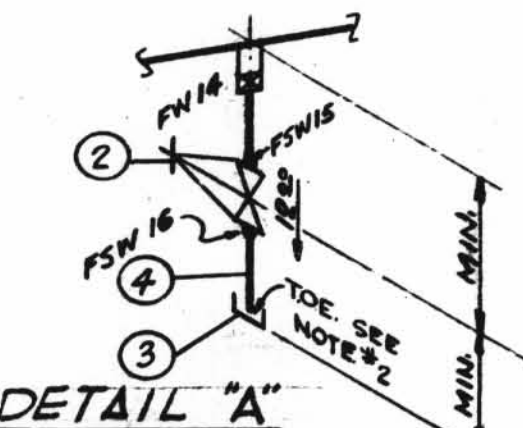
BUTT WELD FW'S ARE RT-100%
 SOCKET WELD FW'S ARE MT OR PT-100%

USE CRANE 425-A COMPOUND ON ALL THRD CONNECTIONS.

FABRICATOR TO MAKE THIS END OF SPOOL 6" LONGER WITH PLAIN END TO FACILITATE INSTALLATION

FW'S PERTAINING TO THIS NOTE ARE TO BE MADE AFTER PIPE IS CUT, PRE-ALIGNED & ENDS HAVE BEEN PREPARED FOR WELDING TO SUIT AS-BUILT CPN.

WELD PROCEDURE AS FOLLOWS:
 C/S 0" UNDER -
 C/S 2 1/2" OVER -



RO.#	PIECE MARK
	2-NSW-146-3
	-4
	-5
	-6
	-7

SITE FAB. PIECE MARK
2-NSW-146-L6
-L7

G-14 DESIGN SPEC DCCPM 1000CM
 HANGER SEISMIC CLASS I
 TEST REQUIREMENTS QL-4
 WELD PROCEDURE
 QSL-04 TESTING SEE NOTE #1

QSL	ITEM	QTY.	SIZE	MATERIAL DESCRIPTION	TAG NO. OR ASTM MAT'L.	HEAT NO.
04	1	1	6"	B.W. DIAPH. CONTROL VA.S.S.	WCR-912	
	2	2	1/2"	600" S.W. GATE VA C.S.	Y050638	
	3	2	1/2"	3000" SCR'D CAP C.S.	A-106 GR. B	
	4	AS REQ'D	1/2"	PIPE (SCH.80) SMLS. C.S.	A-106 GR. B	
01	5	1	1/2"	200" SCR'D GLOBE VA. BRASS OR BRONZE	Y050723	
	6	AS REQ'D	1/2"	PIPE (SCH.80) SMLS C.S.	A-106 GR. B	
01	8	1	1"	200" SCR'D. GLOBE VA. BRASS OR BRONZE	Y-100723	
	9	1	1"	PLUG, 3000" THDD, C.S.	A-106 GR. B	
	10	1	1/2"	CAP,		
04	15	1	6"	B.W. DIAPH. CONTROL VA. S.S.	WCR-912	
	16	AS REQ'D	1/2"	PIPE (SCH.80) SMLS S.S.	A-312 GR. TP. 304	

REVISION RECORD			
NO.	DATE	DESCRIPTION	REMARKS
1	D.R. 20-76	REVISED BY A.E.P. DESIGN PER RFC-DC-12-671. REV'D ITEM # 6. Y-050638 WAS CY050638, ADDED 6" CHECK VALVE - CISCEOGA, 1/2" DRAIN VALVE NB Y050723, 1" VENT VALVE NB Y-100723.	ACTION REQUIRED
2	12-76	ADDED ITEMS 9 & 10 TO B/M & WHERE NOTED	
3	3/21/78	AS PER RFC-DC-12-7130 DELETED LIGATE TAG NO. C15000A, ADDED VALVE TAG NO. C15000A & ITEMS 11 THRU 14 AND REVISED RELATED PIPING	FIELD ACTION REQ'D
4	3/14/78	PER RFC-DC-12-2549 ADDED PIPE SPEC G-14, DIM'S, PCNKT, FIELD WELD BOX, NOTES G-47, FIELD WELDS IT THRU'S, DIM'S 15 & 16 TO DIM, DELETED ITEM NOS 11, 12, 13, & 14 FROM B/M, REVISED ITEM NO 1 IN B/M & MODIFIED PERKLT	FIELD ACTION REQ'D
5	3/14/78	PER RFC-DC-12-2549 ADDED DIM '1' 1/2" REF NOTE 6 IS HOR.	FIELD ACTION REQ'D
6	3/14/78	PER RFC-DC-12-2549 DELETED BOX DIM 13-4 1/2" 3" REF DIM AND 13 1/2" DIM WAS 15 1/2"	FIELD ACTION REQ'D

DESIGN SPEC.	EEE	DESIGN	CODE
A-14 DESIGN SPEC DCCPM 1000CM			
HANGER SEISMIC CLASS I			
TEST REQUIREMENTS QL-4			
WELD PROCEDURE SEE NOTE 5			
QSL-04 TESTING SEE NOTE 1			
A-21 DESIGN SPEC DCCPM 1020CS			
HANGER SEISMIC CLASS I			
TEST REQUIREMENTS QL-4			
WELD PROCEDURE SEE NOTE 5			
QSL-01 TESTING N/A			

POUR/ZONE No. 2CS	FLOW DIAGRAM 2-511A
REQUIRED COMPLETION DATE	O.S. LATE DESIGN
FABRICATED BY TUBECO	WELD PROCEDURE CODE 31AMP
NPS DESIGNS INC. NEW YORK, N.Y.	LIVSEY & COMPANY, INC. INDIANA & MICHIGAN ELECTRIC CO. DONALD C. COOK NUCLEAR PLANT
FABRICATOR NOTE: FABRICATION MUST CONFORM TO LATEST A.E.P. ARRGT. DWGS	DATE: 12/76 DWG. NO. 2-NSW-146 SH. 2 OF 2

2NSW-146 (sheet 2 of 2)
 Lower Containment Ventilation
 Unit 4 Supply Line

D-35B