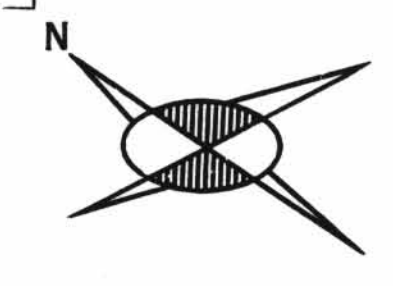
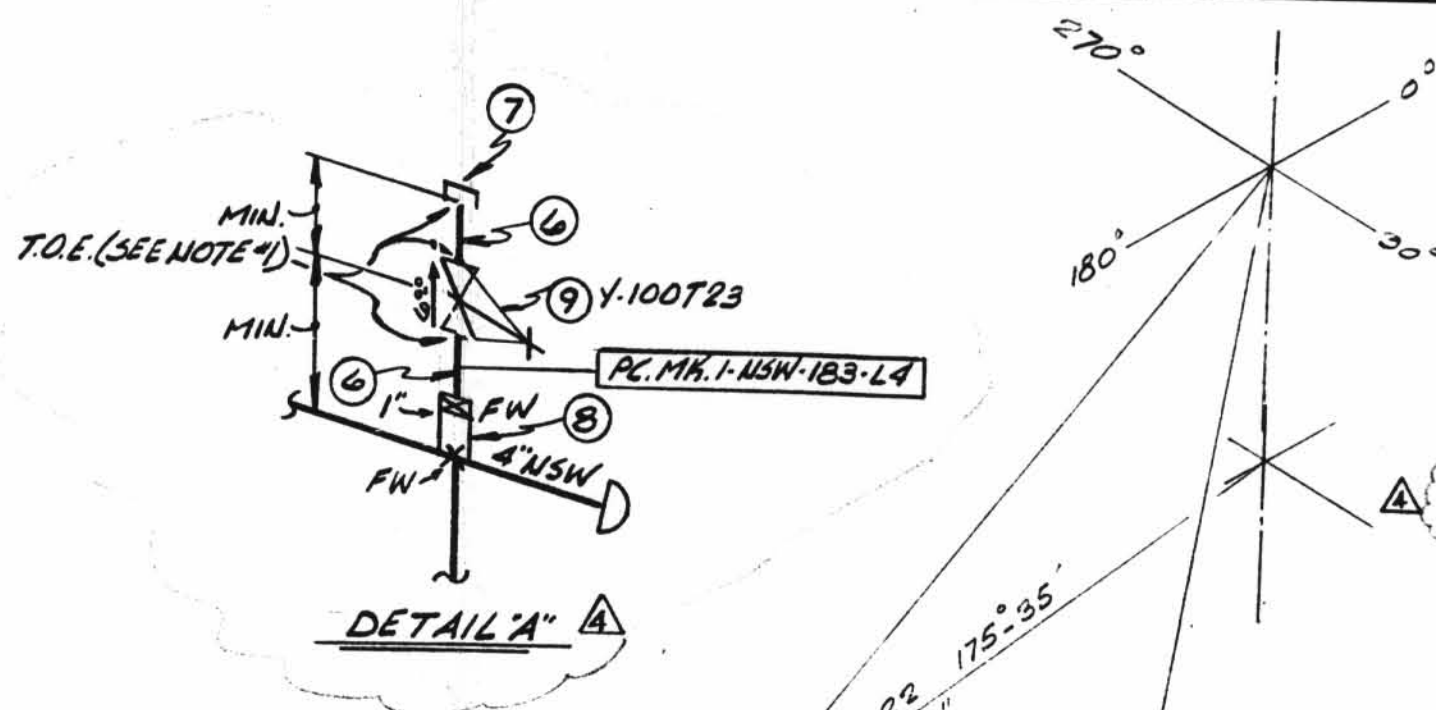


TOTAL FW

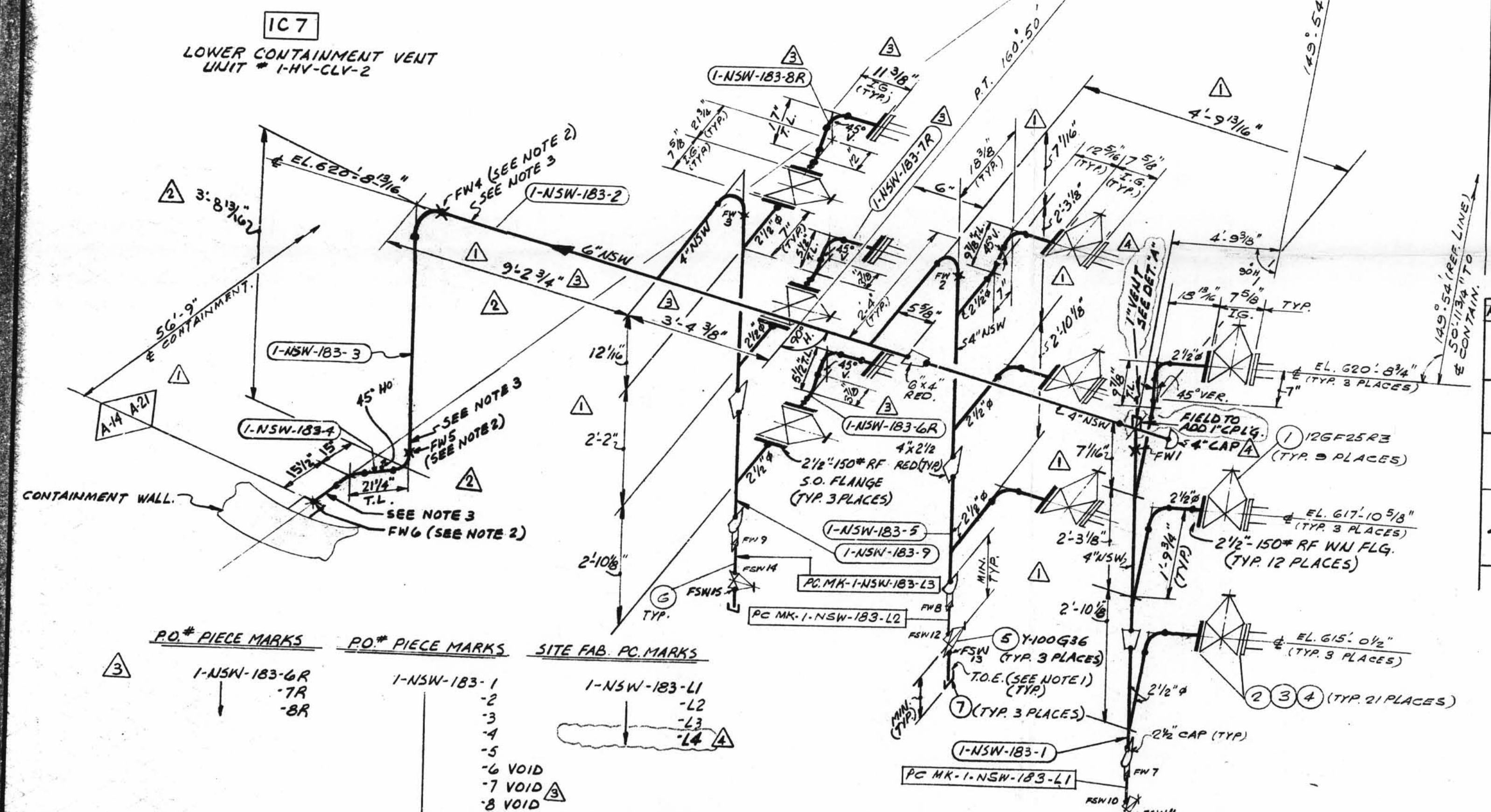


NOTES:
 1. USE CRANE #25-A COMPOUND OR GRINNELL 169B ON ALL THREADED CONN'S.
 2. FIELD WELDS REFERENCED TO THIS NOTE ARE TO BE MADE AFTER PIPE IS CUT, PRE-ALIGNED & ENDS HAVE BEEN PREPARED FOR WELDING TO SUIT AS-BUILT CPN.
 3. SPOOL TO BE FABRICATED WITH 6" EXTRA PIPE AND PLAIN END TO FACILITATE INSTALLATION.



QSL	ITEM	QTY	SIZE	MATERIAL DESCRIPTION	TAG No. OR ASTM MAT'L	HEAT NO.
01	1	9	2 1/2"	125# C.I. FLGD. GATE VA.	12GF25R2	
	2	21	2 1/2"	1/2" THK. FULL FACE COMP. ASBESTOS RUBBER BONDED GASKET		
	3	24	3/8"	3" LG. HEX. HD. MACH. BOLT	A-307 GR. B	
	4	84	5/8"	HEAVY HEX. NUT CL. 2 TOL.	A-307 GR. B	
	5	3	1"	600# C.S. S.W. GATE VA.	Y100G36	
	6	15	1"	PIPE (SCH. 80) SMLS. C.S.	A-106 GR. B	
	7	4	1"	3000# C.S. THD. CAP	A-181 GR. B II	
	8	1	1"	3000# S.W. HALF CPLG. L.S.	A-181 GR. B II	
	9	1	1"	200# GLOBE VA. SCR'D. OR BRASS	Y-100T23	

IC7
 LOWER CONTAINMENT VENT UNIT # 1-HV-CLV-2



REV.	DATE	BY	CHK.	DESCRIPTION	REMARKS
1	7/13	JQ	JLB	CHG'D FABRICATOR & ADDED VARIOUS DIMENSIONS AS NOTED. CHG'D LOC. OF FW 1.	FAB ACTION REQ'D
2	7/26	A.S.	JLB	REVISED CONFIGURATION OF PCS. 1-NSW-183-2, 3 & 4 PER A.E.P. ARRGT DWG. 1-5692 REV. 4	FAB ACTION REQ'D
3	9/21	J.R.	JLB	DIMS 9'-2 3/4", 3'-4 3/8" & 11 3/8" WERE 9'-2 5/16", 3'-4 13/16" & 11 3/4" RESPECTIVELY. VOIDED PC MK'S 1-NSW-183-6, 7 & 8. ADDED PC MK'S 1-NSW-183-6R, 7R & 8R. A.E.P. ARRGT DWG. 1-5692 REV. 4	FIELD ACTION FAB ACTION REQ'D
4	3/5/78	J.R.	I.F.	REVISED BY N.P.S. DESIGNER. ADDED 1" CPLG. TO PC MK. 1-NSW-183-2. FW'S FIELD NOTE, SITE FAB. PC MK. 1-NSW-183-14, DET. A, B, C, D, E, F, G, H, I, J, K, L, M, N, O, P, Q, R, S, T, U, V, W, X, Y, Z, AA, AB, AC, AD, AE, AF, AG, AH, AI, AJ, AK, AL, AM, AN, AO, AP, AQ, AR, AS, AT, AU, AV, AW, AX, AY, AZ, BA, BB, BC, BD, BE, BF, BG, BH, BI, BJ, BK, BL, BM, BN, BO, BP, BQ, BR, BS, BT, BU, BV, BW, BX, BY, BZ, CA, CB, CC, CD, CE, CF, CG, CH, CI, CJ, CK, CL, CM, CN, CO, CP, CQ, CR, CS, CT, CU, CV, CW, CX, CY, CZ, DA, DB, DC, DD, DE, DF, DG, DH, DI, DJ, DK, DL, DM, DN, DO, DP, DQ, DR, DS, DT, DU, DV, DW, DX, DY, DZ, EA, EB, EC, ED, EE, EF, EG, EH, EI, EJ, EK, EL, EM, EN, EO, EP, EQ, ER, ES, ET, EU, EV, EW, EX, EY, EZ, FA, FB, FC, FD, FE, FF, FG, FH, FI, FJ, FK, FL, FM, FN, FO, FP, FQ, FR, FS, FT, FU, FV, FW, FX, FY, FZ, GA, GB, GC, GD, GE, GF, GG, GH, GI, GJ, GK, GL, GM, GN, GO, GP, GQ, GR, GS, GT, GU, GV, GW, GX, GY, GZ, HA, HB, HC, HD, HE, HF, HG, HH, HI, HJ, HK, HL, HM, HN, HO, HP, HQ, HR, HS, HT, HU, HV, HW, HX, HY, HZ, IA, IB, IC, ID, IE, IF, IG, IH, II, IJ, IK, IL, IM, IN, IO, IP, IQ, IR, IS, IT, IU, IV, IW, IX, IY, IZ, JA, JB, JC, JD, JE, JF, JG, JH, JI, JJ, JK, JL, JM, JN, JO, JP, JQ, JR, JS, JT, JU, JV, JW, JX, JY, JZ, KA, KB, KC, KD, KE, KF, KG, KH, KI, KJ, KK, KL, KM, KN, KO, KP, KQ, KR, KS, KT, KU, KV, KW, KX, KY, KZ, LA, LB, LC, LD, LE, LF, LG, LH, LI, LJ, LK, LL, LM, LN, LO, LP, LQ, LR, LS, LT, LU, LV, LW, LX, LY, LZ, MA, MB, MC, MD, ME, MF, MG, MH, MI, MJ, MK, ML, MM, MN, MO, MP, MQ, MR, MS, MT, MU, MV, MW, MX, MY, MZ, NA, NB, NC, ND, NE, NF, NG, NH, NI, NJ, NK, NL, NM, NN, NO, NP, NQ, NR, NS, NT, NU, NV, NW, NX, NY, NZ, OA, OB, OC, OD, OE, OF, OG, OH, OI, OJ, OK, OL, OM, ON, OO, OP, OQ, OR, OS, OT, OU, OV, OW, OX, OY, OZ, PA, PB, PC, PD, PE, PF, PG, PH, PI, PJ, PK, PL, PM, PN, PO, PP, PQ, PR, PS, PT, PU, PV, PW, PX, PY, PZ, QA, QB, QC, QD, QE, QF, QG, QH, QI, QJ, QK, QL, QM, QN, QO, QP, QQ, QR, QS, QT, QU, QV, QW, QX, QY, QZ, RA, RB, RC, RD, RE, RF, RG, RH, RI, RJ, RK, RL, RM, RN, RO, RP, RQ, RR, RS, RT, RU, RV, RW, RX, RY, RZ, SA, SB, SC, SD, SE, SF, SG, SH, SI, SJ, SK, SL, SM, SN, SO, SP, SQ, SR, SS, ST, SU, SV, SW, SX, SY, SZ, TA, TB, TC, TD, TE, TF, TG, TH, TI, TJ, TK, TL, TM, TN, TO, TP, TQ, TR, TS, TT, TU, TV, TW, TX, TY, TZ, UA, UB, UC, UD, UE, UF, UG, UH, UI, UJ, UK, UL, UM, UN, UO, UP, UQ, UR, US, UT, UY, UZ, VA, VB, VC, VD, VE, VF, VG, VH, VI, VJ, VK, VL, VM, VN, VO, VP, VQ, VR, VS, VT, VU, VV, VW, VX, VY, VZ, WA, WB, WC, WD, WE, WF, WG, WH, WI, WJ, WK, WL, WM, WN, WO, WP, WQ, WR, WS, WT, WU, WV, WW, WX, WY, WZ, XA, XB, XC, XD, XE, XF, XG, XH, XI, XJ, XK, XL, XM, XN, XO, XP, XQ, XR, XS, XT, XU, XV, XW, XX, XY, XZ, YA, YB, YC, YD, YE, YF, YG, YH, YI, YJ, YK, YL, YM, YN, YO, YP, YQ, YR, YS, YT, YU, YV, YW, YX, YY, YZ, ZA, ZB, ZC, ZD, ZE, ZF, ZG, ZH, ZI, ZJ, ZK, ZL, ZM, ZN, ZO, ZP, ZQ, ZR, ZS, ZT, ZU, ZV, ZW, ZX, ZY, ZZ	

PO.#	PIECE MARKS	PO.#	PIECE MARKS	SITE FAB.	PC. MARKS
3	1-NSW-183-6R -7R -8R	1	1-NSW-183-1 -2 -3 -4 -5 -6 VOID -7 VOID -8 VOID -9		1-NSW-183-L1 -L2 -L3 -L4

SIZE	QUAN.	FW
6	20	3
4	20	3
2 1/2	35	-
1	3	(5)

DESIGN SPEC.		SEE		S.P. WORKING POINT		B.B.E. REVEL BOTH ENDS		F.W. FIELD WELD		B. FIELD WELD				
HANGER SEISMIC CLASS	I	DESIGN SPEC.	DCCPM 103QCN	T.O.E.	THREAD ONE END	T.O.E.	THREAD ONE END	F.W.	FIELD WELD	B.	FIELD WELD			
TEST REQUIREMENTS	QL	TEST REQUIREMENTS	CODE	T.O.E.	THREAD BOTH ENDS	T.O.E.	THREAD BOTH ENDS	F.W.	FIELD WELD	B.	FIELD WELD			
WELD PROCEDURE	-	MATERIAL CLASS	STAMP	T.O.P.	TOP OF PIPE ELEV.	T.O.P.	TOP OF PIPE ELEV.	F.W.	FIELD WELD	B.	FIELD WELD			
QSL	01	TESTING	100% RT, BW	S.S.L.	MATERIAL QUALITY REQUIREMENTS	S.S.L.	MATERIAL QUALITY REQUIREMENTS	F.W.	FIELD WELD	B.	FIELD WELD			
A-14	DESIGN SPEC. DCCPM 102QCS	A-33	A-106	A-376	A-312	A-105	A-234	A-182	N.D.T. SEE DESIGN CODE STAMP.	M.T.	P.T.	R.T.	U.T.	
HANGER SEISMIC CLASS	I	STD.	XY	XXY	10	20	30	40	60	80	100	120	140	160
TEST REQUIREMENTS	QL	SMLS	WLD											
WELD PROCEDURE	-													
QSL	01	TESTING	N/A											

POUR/ZONE No. IC7	FLOW DIAGRAM I-2-5114A
REQUIRED COMPLETION DATE	Q.S.L. SEE DESIGN
FABRICATED BY TAYLOR	WELD PROCEDURE CODE STAMP
NPS DESIGNS INC. NEW YORK, N.Y.	LIVSEY & COMPANY, INC. INDIANA & MICHIGAN ELECTRIC CO. DONALD C. COOK NUCLEAR PLANT
FABRICATOR NOTE: FABRICATION MUST CONFORM TO LATEST A.E.P. ARRGT. DWGS.	DWN S.B. DATE: 6/29/69
	ISSUED DATE: 6/29/69
	DWG. NO. 1-NSW-183
	REV. 4
	REF. DWG. 1-5692

D-69

1-NSW-183
 Lower Containment Ventilation
 Unit 2 Return Line