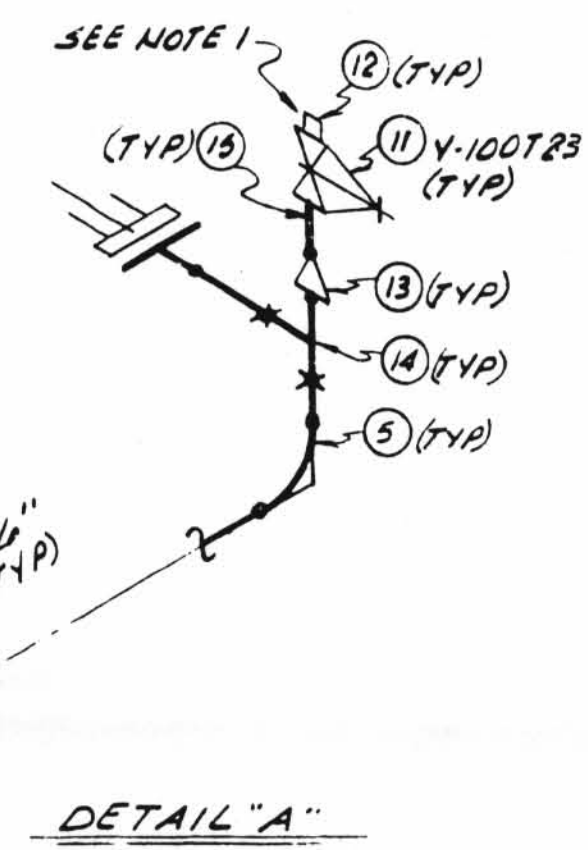


QSL	ITEM	QTY.	SIZE	DESCRIPTION	TAG NO. OR ASTM MAT'L.
01	1	1	3"	125# C I FLG'D GATE VA	12GF03RZ
	2	2	3"	1/16 THK. 150# FF GASK. COMP ASBESTOS RUBBER BONDED	
	3	8	3/8"	3" LG. HEX. HD MACH. BOLT.	A307GR B
	4	8		HEAVY HEX HD NUTS CL 2 TOL.	A307GR B
	5	2	1 1/2"	3000# C S. SW 90° ELL	A106 GR B
	6	2	1 1/2"	150# RF SW FLG.	A106 GR B
	7	2	1 1/2"	1/16 THK. 150# FF GASK. COMP ASBESTOS RUBBER BONDED	
	8	8	1/2"	2 3/4" LG. HEX. HD MACH. BOLT	A307GR B
	8	2		HEAVY HEX. NUTS CL 2 TOL.	A307GR B
	10	AS FLG	1 1/2"	SMLS C S PIPE SCH 80	A106 GR B
	11	2	1"	200# THD. BRONZE GLOBE VA.	Y-100T23
	12	2	1"	3000# C S THD PLUG	A-181 FOR II
	13	2	1 1/2"	SW RED INSERT	
	14	2	1 1/2"	SW TEE	
	15	AS	1"	PIPE (SCH. 80) SMLS C S	A-106 GR B
	16	AS	3"	PIPE SMLS C S SCH. 40	A-106 GR B
	17	3	3"	45° ELL SCH. 40 C S	A-234 GR. B OR C



NOTES:
 1. USE CRANE #25-A OR GRINNELL 1698 COMPOUND ON ALL THREADED CONN'S.

**1-NSW-72 (Sheet 2 of 2)
 Upper Containment Ventilation
 Unit 1 Return Line**

6	5/18/79	THIS DRAWING HAS BEEN CONVERTED FROM A MANUAL FORMAT TO THE IGS-SCANNED DRAWING FORMAT AND SUPERSEDES ALL PREVIOUS REVISIONS. THIS DRAWING HAS ALSO BEEN ENHANCED DELETING ALL FIELD ERRECTION NOTES. REVISED: VENTILATION UNIT FROM 1-HV-CUV4 TO 1-HV-CUV1 PER C/R 99-08407 A/B 024499.	NO FIELD ACTION REQ'D.
---	---------	--	------------------------

REV.	DATE	DESCRIPTION	FIELD STATUS
		POUR/ZONE No. 1C3	
		FLOW DIAGRAM 1-5114A	
			Q.S.L. 01

MATERIAL SPEC: DCCPM1020CS		W.P. - WORKING POINT		B.B.E. - BEVEL BOTH ENDS		F.W. - FIELD WELD		S.W. - SHOP WELD																										
HANGER SEISMIC CLASS II		T.O.E. - THREAD ONE END		P.B.E. - PLAIN ONE END		H - HORIZONTAL		O - AUTOMATIC SHOP WELD																										
TEST REQUIREMENTS N/A		B.O.E. - BEVEL ONE END		P.B.E. - PLAIN BOTH ENDS		V - VERTICAL		M - MANUAL SHOP WELD																										
MATERIAL CLASS A-21 SP-104		T.O.P. - TOP OF PIPE ELEV.		S.O.E. - SHARP ONE END		SW - SHOP WELD		V - VERIFY DIMENSION IN FIELD																										
		Q.S.L. - MATERIAL QUALITY REQUIREMENTS		B.O.P. - BOTTOM OF PIPE ELEV.		FSW - FIELD SHOP WELD																												
		L - PIPE LENGTH																																
<table border="1"> <thead> <tr> <th colspan="2">PIPE</th> <th colspan="2">FITTINGS</th> </tr> <tr> <th>SA-53</th> <th>SA-106</th> <th>SA-376</th> <th>SA-312</th> <th>SA-105</th> <th>SA-234</th> <th>SA-182</th> </tr> </thead> <tbody> <tr> <td>STD.</td> <td>XY</td> <td>XXY</td> <td>10 20 30 40 60 80 100 120 140 160</td> <td></td> <td></td> <td></td> </tr> <tr> <td>SMLS.</td> <td>WLOD.</td> <td></td> <td></td> <td>SA-403</td> <td>SA-181</td> <td></td> </tr> </tbody> </table>				PIPE		FITTINGS		SA-53	SA-106	SA-376	SA-312	SA-105	SA-234	SA-182	STD.	XY	XXY	10 20 30 40 60 80 100 120 140 160				SMLS.	WLOD.			SA-403	SA-181		INDIANA MICHIGAN POWER COMPANY DONALD C. COOK NUCLEAR PLANT BRIDGMAN MICHIGAN		FOR SIGNATURE RECORD SEE MICROFILM COPY OF ISO. 1-NSW-72 REV 5		DWN: DATE: CONTAINMENT BDLG CKD: DATE: DWG. No. 1-NSW-72 SO: DATE: SH 2 REV 6 REF. DWG. 1-5489A & AEP SERVICE CORP. AMERICAN ELECTRIC POWER 1 RIVERSIDE PLAZA COLUMBUS, OH 43215	
PIPE		FITTINGS																																
SA-53	SA-106	SA-376	SA-312	SA-105	SA-234	SA-182																												
STD.	XY	XXY	10 20 30 40 60 80 100 120 140 160																															
SMLS.	WLOD.			SA-403	SA-181																													

D-59B