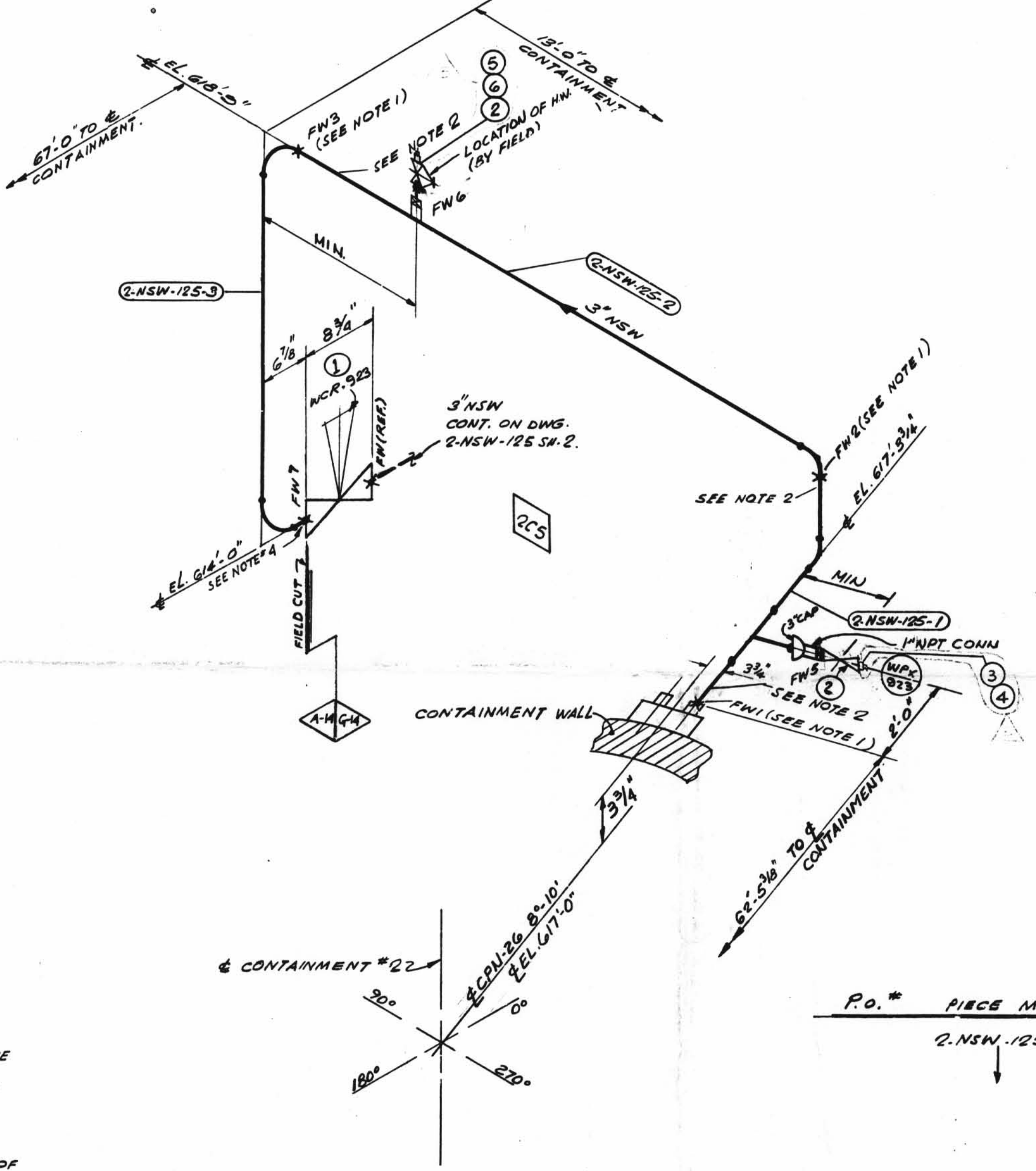
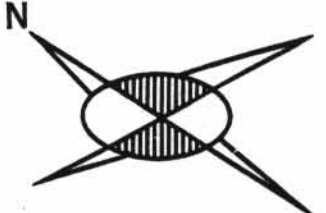


TOTAL FW 6



FOR REV. 3 ONLY

REV	QUAN.	FW.
3	-	1

- NOTES:
1. FW'S PERTAINING TO THIS NOTE ARE TO BE MADE AFTER PIPE IS CUT. PRE-ALIGNED & ENDS HAVE BEEN PREPARED FOR WELDING TO SUIT AS-BUILT CPN.
 2. FABRICATOR TO MAKE THIS END OF SPOOL 6" LONGER WITH PLAIN END TO FACILITATE INSTALLATION.
 3. USE CRANE 425-A COMPOUND ON ALL THRD. CONNS.
 4. PROVIDE BI-METALLIC WELDS (STAINLESS STEEL-CARBON STEEL)
 5. REMOVE BONNET ASSEMBLY BEFORE WELDING VALVE BODY TO PIPE LINE.

REV	QUAN.	FW.
3	16	4
4	-	2

ISO SHT. NO. 2167

QSL	ITEM	QTY.	SIZE	MATERIAL DESCRIPTION	TAG No. OR ASTM MAT'L.	HEAT NO.
04	1	1	3"	B.W. DIAPH. CONTROL VA. S.S.	WCR-923	
	2	2	1"	600° S.W. GLOBE VALVE C.S.	Y400735	
	3	1	1"	1"SWX 3/4" THR'D 3000° RED. INSERT	A-181	
	4	1	1/2"	3000° THR'D PLUG		
	5	1	1"	1"SWX 3/4" THR'D 3000° RED. INSERT		
	6	1	3/4"	3000° THR'D PLUG		

REVISION RECORD

NO.	DATE	DESCRIPTION	REMARKS
1	12/26/77	REVISED BY AEP DESIGN: PER RFC-DC-12-671: ADDED; 1" VENT-VALVE N2 Y-100723.	ACTION REQ'D.
2	1/27/78	PER RDM-MC-0162 ITEM #2 WAS (2) Y-100723, REMOVED ITEM #3	
3	9/16/78	PER RFC-DC-12-2549 ADDED: PIPE SPEC Q-19, WELD BOX WELD FW7, NOTES 4&5. REVISED: DIM, ITEM #1 B/M.	FIELD ACTION REQ'D
4	10/18/78	PER RFC-DC-12-2549 REV. DESCRIPTION OF ITEM #2 WAS 200° GLOBE VA BRASS IN. VALVE @ FNPT CONN. WAS (1) DUE THE DRAFTING ERROR	NO FIELD ACTION REQ'D
5	11/1/78	PER RFC-DC-12-2549 ADDED RED. INSERT & PLUGS TO ITEM #2 & 3.	FIELD ACTION REQ'D.

D-34A

2NSW-125 (sheet 1 of 2)
Upper Containment Ventilation
Unit 1 Return Line

DESIGN SPEC. DCCPM 123 RCN				HANGER SEISMIC CLASS I				TEST REQUIREMENTS QL 4				MATERIAL CLASS A-14 SPEC. 104				
PIPE				FITTINGS				TESTING				ADDITIONAL				
A-53	A-106	A-376	A-312	A-105	A-234	A-182	N.D.T.	ALT.	P.T.	RT.	UT.					
STD.	XY	XXY	10	20	30	40	60	80	100	120	140	160				
				A-403				A-181				PRESSURE TEST				
												MED. PRESS. DURATION				

POUR/ZONE No. 205	FLOW DIAGRAM 2-5118A
REQUIRED COMPLETION DATE	Q.S.L. 34
FABRICATED BY TUBECO	WELD PROCEDURE
NPS DESIGNS INC. NEW YORK, N.Y.	
LIVSEY & COMPANY, INC. INDIANA & MICHIGAN ELECTRIC CO. DONALD C. COOK NUCLEAR PLANT	
DWN. 6/8	DATE 11/22
ISSUED	DATE 1/10
REF. DWG. 2-5497A	DWG. NO. 2-NSW-125
	SH. 1 OF 2
	REV. 5