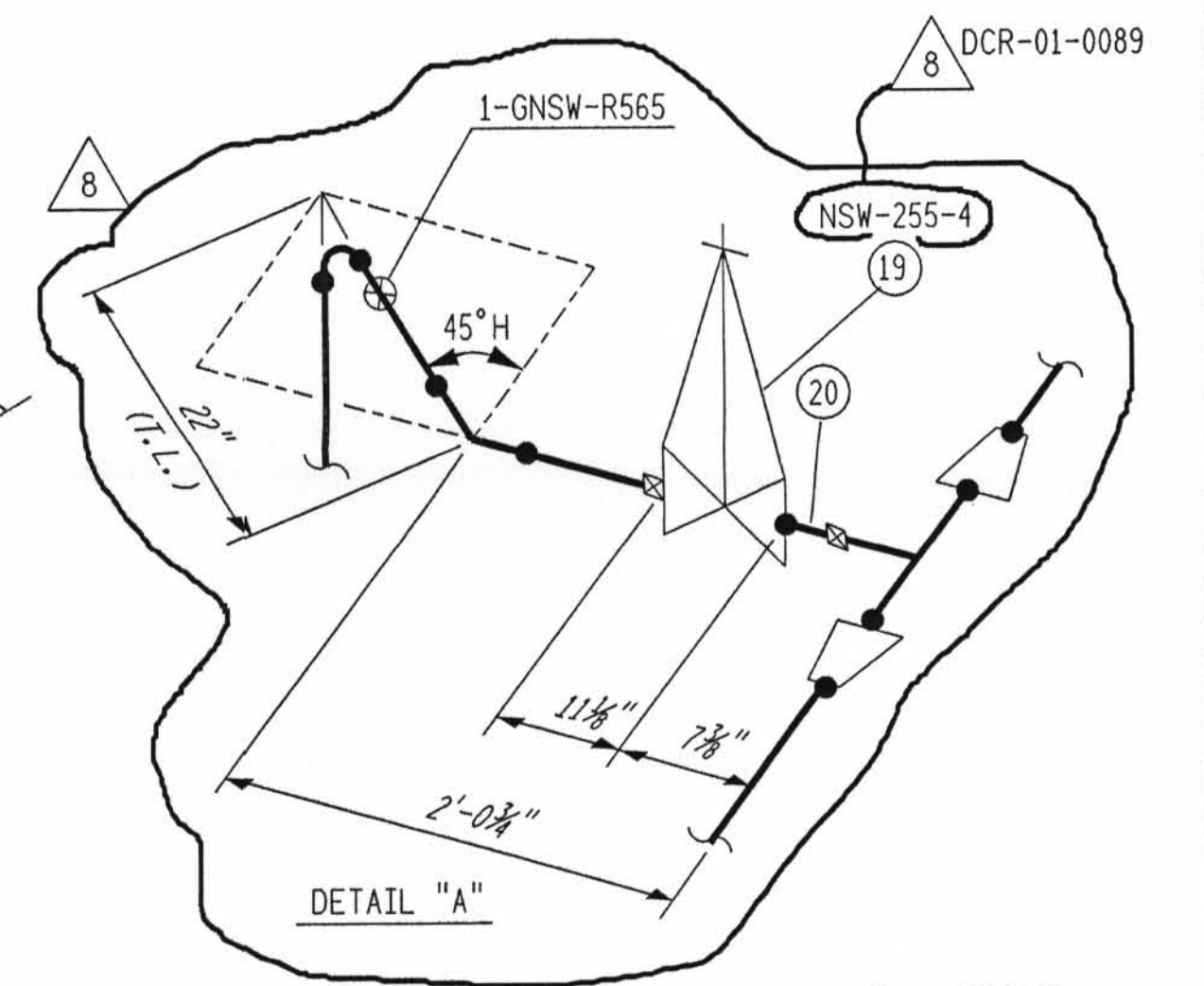


MATERIAL					
QSL	ITEM	QTY.	SIZE	DESCRIPTION	TAG No. OR ASTM MAT'L.
01	1	AS REQ'D	3"	PIPE, SMLS, CS, SCH. 40	A-106 GR. B
	2	3	3"	90° LR ELL, BW, CS, SCH. 40	A-234 GR. WPB
	3	5	3"	45° ELL, BW, CS, SCH. 40	A-234 GR. WPB
	4	1	3"	125# C.I. FLG'D GATE VALVE	12GF03RZ DELETED
	5	2	3"	1/8" THK. 150# FFGASK. RUBBER BONDED	DELETED
	6	8	5/8" x 3"	LG. HEX. HD MACH BOLTS	A-307 GR. B DELETED
	7	8	5/8"	HEAVY HEX. NUTS CL. 2 TOL	A-307 GR. B DELETED
	8	2	1 1/2"	3000# CS SW 90° ELL	A181GR Ioe II
	9	2	1 1/2"	150# RF SW FLG	A181GR Ioe II
	10	2	1 1/2"	1/8" THK. 150# FFGASK. RUBBER BONDED	
	11	B	1/2" x 2 1/2"	LG. HEX. HD MACH. BOLT	A-193 GR. B7
	12	B	3/4"	HEAVY HEX. HD. NUT CL 2 TOL	A-194 GR. 2H
	13	AS REQ'D	1 1/2"	SMLS. C. S. PIPE SCH 80	A 106 GR B
	14	2	1"	200# THD BRONZE GLOBE VA.	Y-100T23
	15	2	1"	3000# CS THD PLUG	A-181 GR II
	16	2	1 1/2"	SW RED. INSERT	
	17	2	1 1/2"	SW TEE	
	18	AS REQ'D	1"	PIPE (SCH 80) SMLS CS	A-106 GR. B
	19	1	3"	300# CAST STEEL GATE VALVE, BW	30GE03A0
	20	AS REQ'D	3"	PIPE, (SCH 40) SMLS., C.S.	SA-106 GR B



D-56B

1-NSW-69 (Sheet 2 of 2)  
Upper Containment Ventilation  
Unit 4 Return Line

SUPPORT MARK NO.'S

- △ 8 1-GNSW-R547
- 1-GNSW-R548
- 1-GNSW-R550
- 1-GNSW-R565
- 1-GNSW-R566

NOTES:

1. USE CRANE 425-A OR GRINNELL 1698 COMPOUND ON ALL THREADED CONN'S
2. THE FOLLOWING MATERIAL SPECIFICATIONS APPLY: DCCPM102QCS AND ES-PIPE-1000-QCS.

⊗ INDICATES LOCATION OF PIPE SUPPORT AND SUPPORT DETAIL NUMBER

SUPPORT MARK NUMBERS SHOWN ARE FOR GENERAL AND SEQUENTIAL LOCATION OF SUPPORTS ONLY FOR EXACT LOCATIONS SEE PIPE SUPPORT DETAIL

MATERIAL SPEC.	SEE NOTE 2	W.P. = WORKING POINT	B.B.E. = BEVEL BOTH ENDS	FW = FIELD WELD	⊗ = FIELD WELD
HANGER SEISMIC CLASS	II	T.O.E. = THREAD ONE END	P.O.E. = PLAIN ONE END	H = HORIZONTAL	○ = AUTOMATIC SHOP WELD
TEST REQUIREMENTS	N/A	T.B.E. = THREAD BOTH ENDS	P.B.E. = PLAIN BOTH ENDS	V = VERTICAL	● = MANUAL SHOP WELD
MATERIAL CLASS	A-21 SP-104	B.B.E. = BEVEL ONE END	S.B.E. = SHAPE BOTH ENDS	SW = SHOP WELD	■ = VERIFY DIMENSION IN FIELD
PIPE		T.O.P. = TOP OF PIPE ELEV.	B.O.P. = BOTTOM OF PIPE ELEV.	FSW = FIELD SHOP WELD	
SA-53	SA-106	SA-376	SA-312		
SA-105	SA-234	SA-182			
SA-403	SA-181				
SMLS.	WLOD.	FOR AS INSTALLED MATERIAL - SEE B.O.M. ABOVE			

INDIANA MICHIGAN POWER COMPANY  
**DONALD C. COOK**  
NUCLEAR PLANT  
BRIDGMAN MICHIGAN

8	4/11/91	REVISED: VA DESIGN NO'S. TO UNIQUE NO'S., EXCEPT ON BOM, PER DCR-01-0089.	NO FIELD ACTION REQ'D.
		ADDED: DETAIL "A"; ITEMS 19 & 20 AND TO BOM; PIPE SUPPORT 1-GNSW-R550, DIM'S 22" T.L. & 2'-0 3/4". RELOCATED: PIPE SUPPORT 1-GNSW-R566. REVISED: DIM'S 6 1/2" TO 7 3/8" & 8 3/8" TO 11 1/2". DELETED: ITEMS 4-7; DIM'S MIN (TYP), 10 1/2", 8 1/2" & 6 1/2" PER 1-DCP-4845 REV 0. GM/CD/ENJ/WCM	

REV.	DATE	DESCRIPTION	FIELD STATUS
		POUR/ZONE No. 1C3	
		FLOW DIAGRAM 1-5114A	
		Q.S.L. 01	
FOR SIGNATURE RECORD SEE MICROFILM COPY OF ISO. 1-NSW-69-SH2 REV 6		DWNR: DATE: CONTAINMENT BLDG. CKDR: DATE: DWG. No. SO: DATE: 1-NSW-69 LDR: DATE: SH 2 REF. DWG. 1-5585A 1-5740, 1-5744	REV 8
AMERICAN ELECTRIC POWER		AEP SERVICE CORP. 1 RIVERSIDE PLAZA COLUMBUS, OH 43215	

1-NSW-69-SH2-8