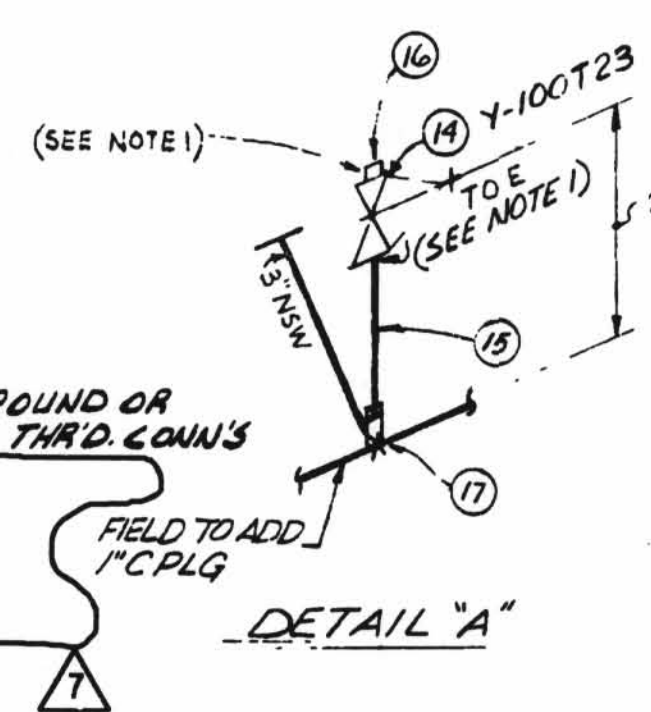


SUPPORT MARK NO. S
 1-GNSW-R543
 1-GNSW-R544
 1-GNSW-R545
 1-GNSW-R546

QSL	ITEM	QTY.	SIZE	DESCRIPTION	TAG NO. OR ASTM MATL.
01	1	AS REQD	3"	PIPE, SMLS, CS, SCH 40	A-106 GR. B
	2	1	3"	45° ELL, BWI, CS, SCH 40	A-234 GR. B
	3	3	3"	90° LR ELL, BWI, CS, SCH 40	A-234 GR. B
	4	1	3	125° CI FLG'D GATE VA	12GF03RZ
	5	4	3	1/16 THK 150° FF GASK COMP ASBESTOS RUBBER BONDED	
	6	8	3/8"	* 3 LNG HEX HD MACH BOLTS	A307 GR B
	7	8	3/8"	HEAVY HEX HD NUT CL 2 TOL	A307 GR B
	8	2	1 1/2"	3000° CS SW 90° ELL	A181 GR II
	9	2	1 1/2"	150° RF SW FLG	A181 GR II
	10	2	1 1/2"	1/16 THK 150° FF GASK COMP ASBESTOS RUBBER BONDED	
	11	8	1/2"	* 2 1/4 LG HEX HD MACH BOLT	A307 GR E
	12	8	1/2"	HEAVY HEX HD NUT CLASS 2 TOL	
	13	AS REQD	1 1/2"	SMLS C S PIPE SCH 80	A106 GR B
	14	1	1"	200° THRD GLOBE VA BRASS OR BRASS	Y-100T23
	15	AS REQD	1"	SMLS C.S. PIPE SCH 80	A-106 GR. B
	16	1	1"	3000° C.S. THD FLY	A-181 GR. II
	17	1	1"	3000° SW HALF COUPLING	A-181 GR. II
	18	1	2"	3000° SW HALF COUPLING	GR. I or II
	19	AS REQD	2"	C.S. PIPE (SCH. 80) SMLS	A-106 GR. B
	20	1	2"	3000° CAP C.S. S.W.E.	SA-185 OR SA-181 CLASS 60 GR. B

NOTE:
 1. USE CRANE 425-A COMPOUND OR GRINNELL 1698 ON ALL THRD. CONN'S
 2. FIELD TO ADD 1" CPLG



SUPPORT MARK NUMBERS SHOWN ARE FOR GENERAL AND SEQUENTIAL LOCATION OF SUPPORTS ONLY FOR EXACT LOCATIONS SEE PIPE SUPPORT DETAIL

⊗ INDICATES LOCATION OF PIPE SUPPORT AND SUPPORT DETAIL NUMBER

MATERIAL SPEC.	DDCCPM1020CS	W.P. - WORKING POINT	W.P. - WORKING POINT
HANGER SEISMIC CLASS	II	T.A.E. - THROUGH ONE END	T.A.E. - THROUGH ONE END
TEST REQUIREMENTS	N/A	T.S.E. - THROUGH BOTH ENDS	T.S.E. - THROUGH BOTH ENDS
MATERIAL CLASS	A-21 SPEC. 104	S.A.E. - SHAPE ONE END	S.A.E. - SHAPE ONE END
		T.A.P. - TOP OF PIPE ELEV.	T.A.P. - TOP OF PIPE ELEV.
		C.S.L. - MATERIAL QUALITY REQUIREMENTS	C.S.L. - MATERIAL QUALITY REQUIREMENTS
		T.L. - TRUE LENGTH	T.L. - TRUE LENGTH

INDIANA MICHIGAN POWER COMPANY
DONALD C. COOK
 NUCLEAR PLANT
 BRIDGMAN MICHIGAN

7 1 1/2" AS REQD
 THIS DRAWING HAS BEEN CONVERTED FROM A MANUAL FORMAT TO THE IGS-SCANNED DRAWING FORMAT AND SUPERSEDES ALL PREVIOUS REVISIONS.
 ADDED: 2" CAP, SUPPORT MARK NUMBERS, ITEMS 19 AND 20 TO B/M AND SUPERSEDE HGR. ISO. 1-GNSW-66 SH. 2 REV. 0,
 DELETED: NOTE 2, PER 12-DCP-0860.
 WS/DDM/ JRM

REV.	DATE	DESCRIPTION	FIELD STATUS
		POUR/ZONE No. 1C3, 1C7, 1C10	
		FLOW DIAGRAM 1-5114A	
		Q.S.L. 01	
FOR SIGNATURE RECORD SEE MICROFILM COPY OF ISO. 1-NSW-66 SH.2 REV.6		DATE:	CONTAINMENT
		DATE:	DWG. No. 1-NSW-66
		DATE:	SH. 2 REV. 7
		DATE:	REF. DWG. 1-5489A, 1-5740
		DATE:	AEP SERVICE CORP. 1 RIVERSIDE PLAZA COLUMBUS, OH 43215

1-NSW-66 (Sheet 2 of 2)
 Upper Containment Ventilation
 Unit 3 Supply Line