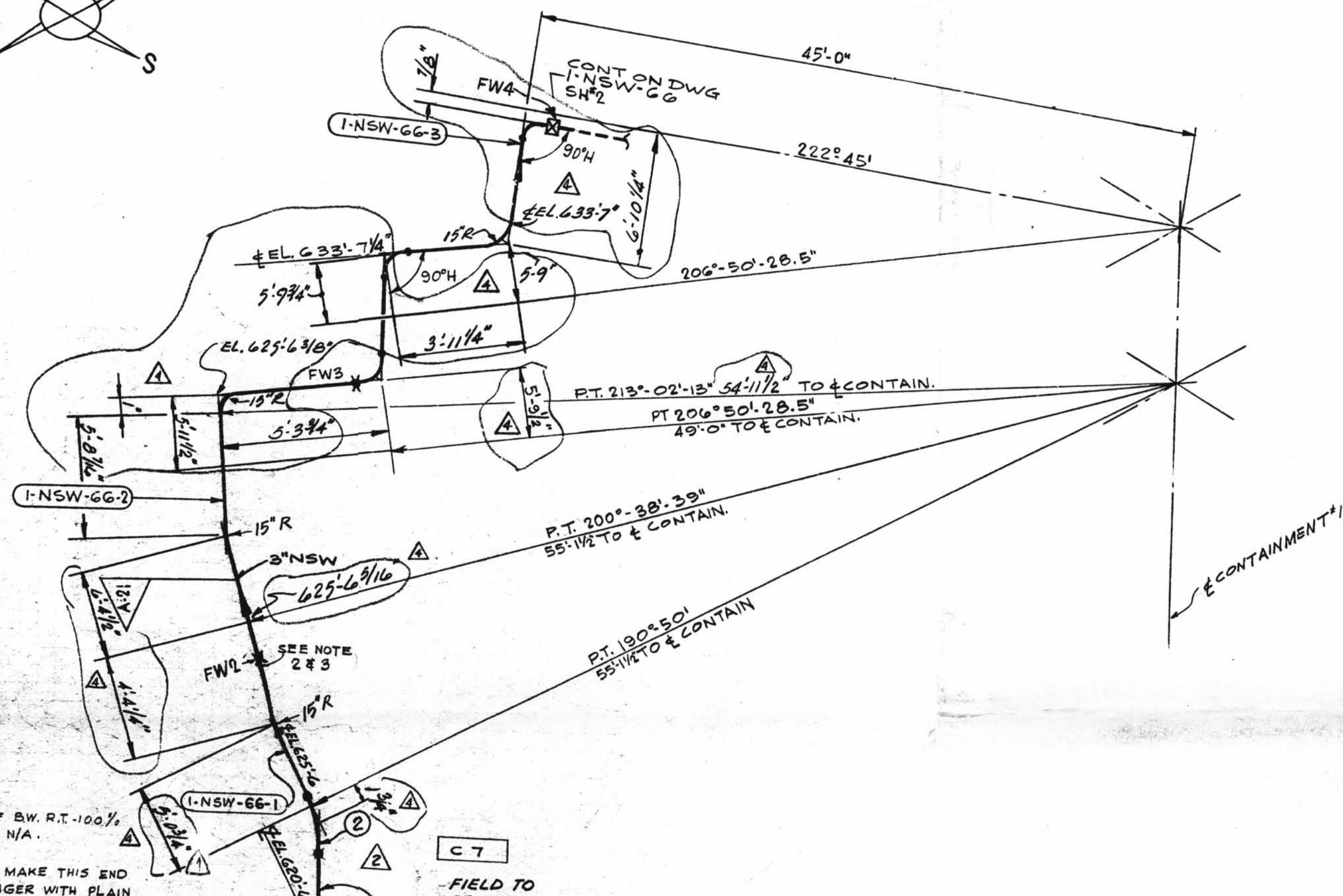
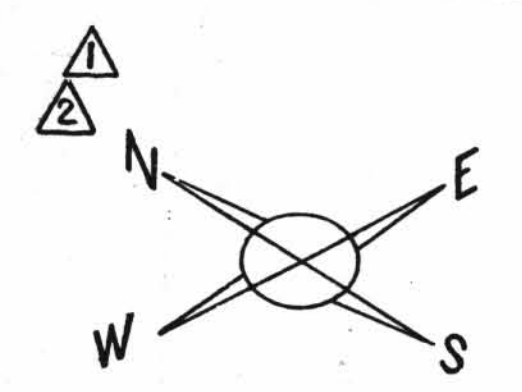
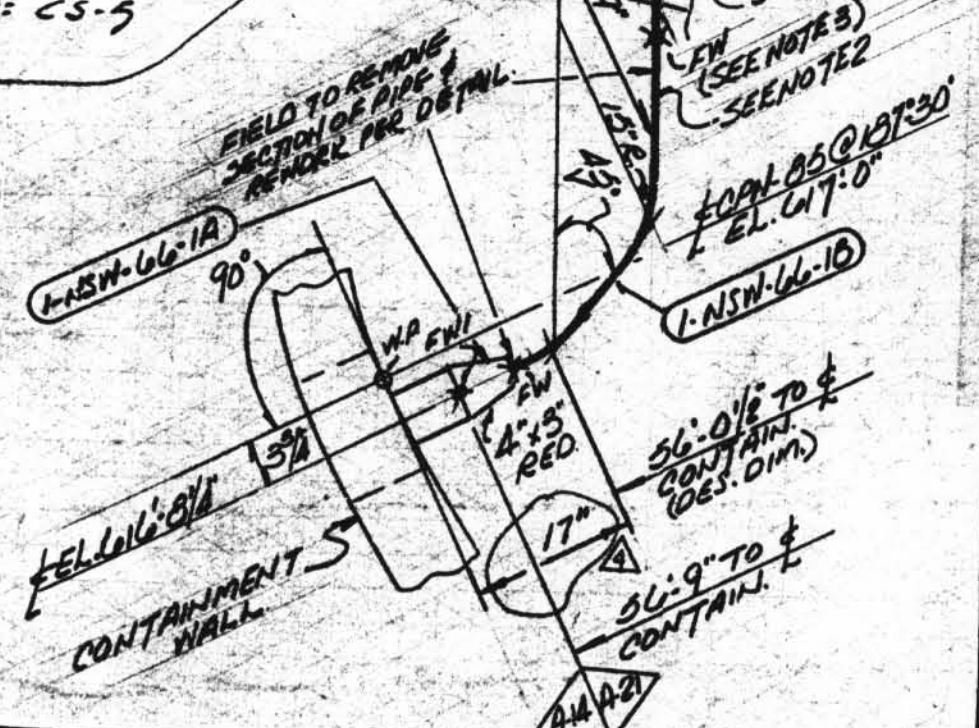


TOTAL FW



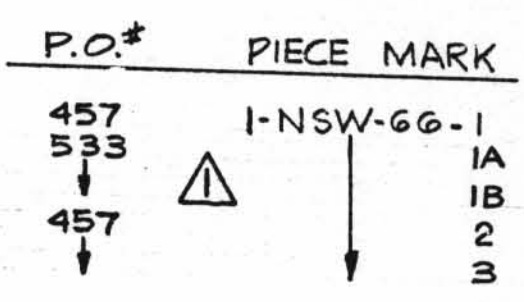
- NOTES:
1. FW1 ONLY TO BE B.W. R.T. 100% ALL OTHER FW N/A.
 2. FABRICATOR TO MAKE THIS END OF SPOOL 6" LONGER WITH PLAIN END TO FACILITATE INSTALLATION.
 3. FW'S PERTAINING TO THIS NOTE ARE TO BE MADE AFTER PIPE IS PRE-ALIGNED & ENDS HAVE BEEN PREPARED FOR WELDING TO SUIT AS BUILT CPN.
 4. WELD PROCEDURE AS FOLLOWS:
 4/5 2 1/2" UNDER = CS-6
 4/5 3" OVER UP TO 3/4" WALL = CS-1 OR CS-2
 3/4" WALL & UP = CS-5



| | |
|----------------------|---------------------------|
| A-21 | DESIGN SPEC. DCCPM 1029GS |
| HANGER SEISMIC CLASS | II |
| TEST REQUIREMENTS | Q1 |
| WELD PROCEDURE | SEE NOTE 4 |
| QSL | Q1 |
| TESTING | N.A. |

| | |
|----------------------|---------------------------|
| A-14 | DESIGN SPEC. DCCPM 1029GN |
| HANGER SEISMIC CLASS | II |
| TEST REQUIREMENTS | Q1 |
| WELD PROCEDURE | SEE NOTE 4 |
| QSL | Q1 |
| TESTING | SEE NOTE 1 |

| | | | | |
|----------------------|--------|--------------------------------------|------------------------|------------------------------|
| DESIGN SPEC. | SEE | S.P. WORKING POINT | F.W. FIELD WELD | M. FIELD WELD |
| HANGER SEISMIC CLASS | DESIGN | T.O.E. THREAD ONE END | H. HORIZONTAL | A. AUTOMATIC SHOP WELD |
| TEST REQUIREMENTS | CODE | T.B.E. THREAD BOTH ENDS | V. VERTICAL | M. MANUAL SHOP WELD |
| MATERIAL CLASS | STAMP | B.O.E. BEVEL ONE END | S.W. SHOP WELD | V. VERIFY DIMENSION IN FIELD |
| | | P.B.E. PLAN BOTH ENDS | F.S.W. FIELD SHOP WELD | |
| | | S.O.E. SHAPE ONE END | | |
| | | T.O.P. TOP OF PIPE ELEV. | | |
| | | B.O.P. BOTTOM OF PIPE ELEV. | | |
| | | M.Q.L. MATERIAL QUALITY REQUIREMENTS | | |
| | | T.L. TRUE LENGTH | | |



1-NSW-66 (Sheet 1 of 2)
Upper Containment Ventilation
Unit 3 Supply Line

N.P.S. DESIGNS
FABRICATOR NOTE: FABRICATION MUST CONFORM TO LATEST A.E.P. ARRG. DRGS.

MATERIAL 150 SH. NO. 1391

| OSL | ITEM | QTY. | SIZE | DESCRIPTION | TAG NO. OR ASTM MAT'L. | HEAT NO. |
|-----|------|---------|------|----------------------------|------------------------|----------|
| 01 | 1 | AS REQD | 3" | PIPE, SMLS, CS, SCH 40 | A-106 GR. B | |
| | 2 | 2 | 3" | 90° LR ELL, BW, CS, SCH 40 | GR. B 68 W.P.B. | |

| REV | DATE | DR | CHK | DESCRIPTION | REMARKS |
|-----|---------|------|-----|--|--|
| 1 | 12/1/71 | S.G. | GN | RELEASED PIPING AT CPN. ADDED: FW1A & 1B; PC MK 1A & 1B; RO. #1 DESIGN CODE STAMP; NOTES 2 & 3; TOTAL NO. OF FW. REVISED WELD PROCEDURE. PER DWG 1-5489A. | FIELD ACTION REQ'D FAB ACTION REQ'D |
| 2 | 4/10/72 | J.Q. | GN | REVISED PIPING & ADDED NOTE FOR FIELD REWORK FOR PC. MK 1 & 1B. ADDED: ITEM 1 & 2. DELETED: WELD PROCEDURE; TOTAL NO. OF FW'S PER ACP DWG 1-5489A-2. | FIELD ACTION REQ'D |
| 3 | 1-22-73 | AA | GN | REVISED CONFIGURATION OF SPOOLS W/SH 100-118 & 119. REWORK BY FIELD. SEE ARRG. DWG 1-5489A-3. | FIELD ACTION REQ'D |
| 4 | 1/4/74 | GR | GN | ADDED: NOTE A. DIMS TO ALIGN: 5'-9", 3'-11 1/4", 5'-9", 5'-9", 5'-9", 1'-5", 5'-11 1/4", 6'-4 1/4", 4'-11 1/4", 5'-0", 8'-2 3/4", 11'-0", 17'-0", EL. 625'-6 3/16", 625'-6 3/16", 17'-0", EL. 625'-6 3/16", WAS 1'-3 3/4", 3'-0", WAS 4'-9", 5'-4 1/2" WAS 35 DIMS. 116" WAS 3" PER AS BUILT DIMS. A.E.P. DWG 1-5489A-4. | NO ACTION REQ'D |

| LABOR COST CONTROL | | LABOR COST CONTROL | |
|--------------------|------------------|--------------------|------------------|
| USE ONLY WITH | | USE ONLY WITH | |
| PIPE SIZE | | PIPE SIZE | |
| SCHEDULE | | SCHEDULE | |
| TYPE | | TYPE | |
| ISO START DATE | | ISO START DATE | |
| ISO FINISH DATE | | ISO FINISH DATE | |
| WORK OPERATION | LINE ITEM NUMBER | WORK OPERATION | LINE ITEM NUMBER |
| HANGER INST. | | HANGER INST. | |
| ERECT | | ERECT | |
| WELD | | WELD | |
| RADIO-G - X-RAY | | RADIO-G - X-RAY | |
| STRESS RELIEVE | | STRESS RELIEVE | |
| MISC. WORK | | MISC. WORK | |

POUR/ZONE No. 1C7
REQUIRED COMPLETION DATE
FABRICATED BY TUBECO

FLOW DIAGRAM L2-5114A
Q.S.L. SEE DESIGN
WELD PROCEDURE CODE STAMP

| REVISION RECORD | |
|-----------------|-------------|
| NO. | DESCRIPTION |
| | |
| | |

LIVSEY & COMPANY, INC.
DONALD C. COOK NUCLEAR PLANT

DWN: LGR DATE: 7-16-71
CKD: GN DATE: 7-19-71

ISSUED
REF. DWG. 1-5489A

CONTAINMENT BLDG
DWG. NO.
1-NSW-66
SHT. 1 OF 2

| REV. | QTY. | FW |
|------|------|----|
| 1" | 60 | 10 |
| 3" | 60 | 10 |

D-53A