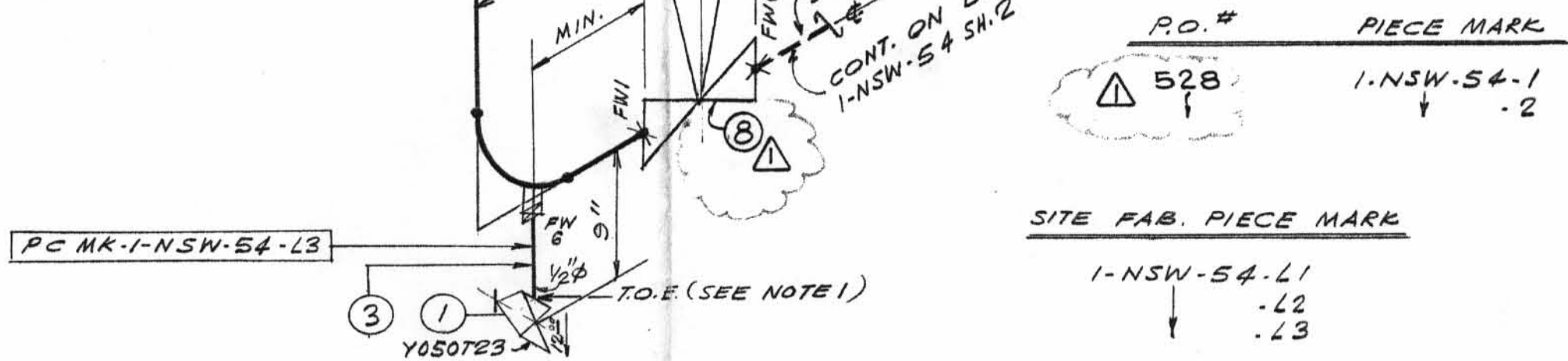


MATERIAL 150 SH. No. 1314

QSL	ITEM	QTY.	SIZE	DESCRIPTION	TAG No. OR ASTM MAT'L.	HEAT NO.
01	1	3	1/2"	200# SCRIB GLOBE W. OR BRASS	BRONZE Y050723	
	2	2	1/2"	C.S. S.W. PLUG. 3000#	A-181 GR. 20R II	
	3	1	1/2"	PIPE (SCH. 80) SMLS. C.S.	A-106 GR. B	
	4	3	1/2"	3000# C.S. SW. 90° ELL	A-181 GR. I OR II	
	5	2	3"	FLEXITALLIC GASKET STYLE CG, TYPE 304 SS + ASBESTOS FILLER 1/2" THK		
	6	8		3/4" x 4 1/4" LG STUD BOLT	A-193 GR. B7	
	7	10	3/4"	HEX NUT	A-194 GR. 2H	
	8	1	3"	REGULATING VALVE	WRV-922	
	9	1	3"	125# BUTTERFLY WAFER VA, C.I.	12FW03RS	
	10	4		5/8" x 5" LG HEX MACHINE BOLT	A-307 GR. B	
	11	4	5/8"	HEX NUT		

REV	DATE	DR	CHK	DESCRIPTION	REMARKS
1	4/25/72	ES	GN	REVISED ORIENTATION OF ORIFICE FLGS. + ADDED NOTE FOR FIELD REWORK. ADDED: ITEMS 4 THRU 11; BOX FOR TOTAL NO. OF FWS; P.O.#; NOTE 2. REVISED: PIPING FOR WFA-922; PER A.E.P. DWG 1-5497A-4.	FIELD ACTION REQ'D

- NOTES:**
- USE CRANE 425-A COMPOUND ON ALL THREADED CONNS.
 - PIPE 2" & UNDER CS (LATER). PIPE 2 1/2" & UP CS (LATER).



LABOR COST CONTROL		LABOR COST CONTROL	
USE ONLY WITH		USE ONLY WITH	
PIPE SIZE		PIPE SIZE	
SCHEDULE		SCHEDULE	
TYPE		TYPE	
ISO START DATE		ISO START DATE	
ISO FINISH DATE		ISO FINISH DATE	
WORK OPERATION	LINE ITEM NUMBER	WORK OPERATION	LINE ITEM NUMBER
HANGER INST.		HANGER INST.	
ERECT		ERECT	
WELD		WELD	
RADIO-G - X-RAY		RADIO-G - X-RAY	
STRESS RELIEVE		STRESS RELIEVE	
MISC. WORK		MISC. WORK	

SIZE	QUAN.	FW
3"	22'-0"	3
1/2"	3'-0"	11

DESIGN SPEC.		TEST REQUIREMENTS		MATERIAL CLASS	
DCCPM 102 QCS <td>II <td>QL-1 <td>A-21 SPEC 104 <td></td> <td></td> </td></td></td>	II <td>QL-1 <td>A-21 SPEC 104 <td></td> <td></td> </td></td>	QL-1 <td>A-21 SPEC 104 <td></td> <td></td> </td>	A-21 SPEC 104 <td></td> <td></td>		

PIPE		FITTINGS		TESTING		ADDITIONAL						
A-53	A-106	A-376	A-312	A-105	A-234	A-182	N.D.T. N/A.					
STD.	XY	XXY	10	20	30	40	60	80	100	120	140	160

POUR/ZONE No. 105 FLOW DIAGRAM 1-2-5114A
 REQUIRED COMPLETION DATE Q.S.L. 01
 FABRICATED BY TUBECO WELD PROCEDURE SEE NOTE 2

REVISION RECORD		LIVSEY & COMPANY, INC.	
NO.	DATE	DESCRIPTION	

1NSW-54 (sheet 1 of 2)
 Upper Containment Ventilation
 Unit 1 Supply Line

DWN: S. G. DATE: 10-4-71 CONTAIN. VICINITY
 CKD: WJP DATE: 10-8-71 DWG. NO.
 ISSUED 1-NSW-54
 REF. DWG: 1-5497A-2 SH. 1052

N.P.S. DESIGNS
 FABRICATOR NOTE: FABRICATION MUST CONFORM TO LATEST A.E.P. ARRGT. DWGS.

D-84A