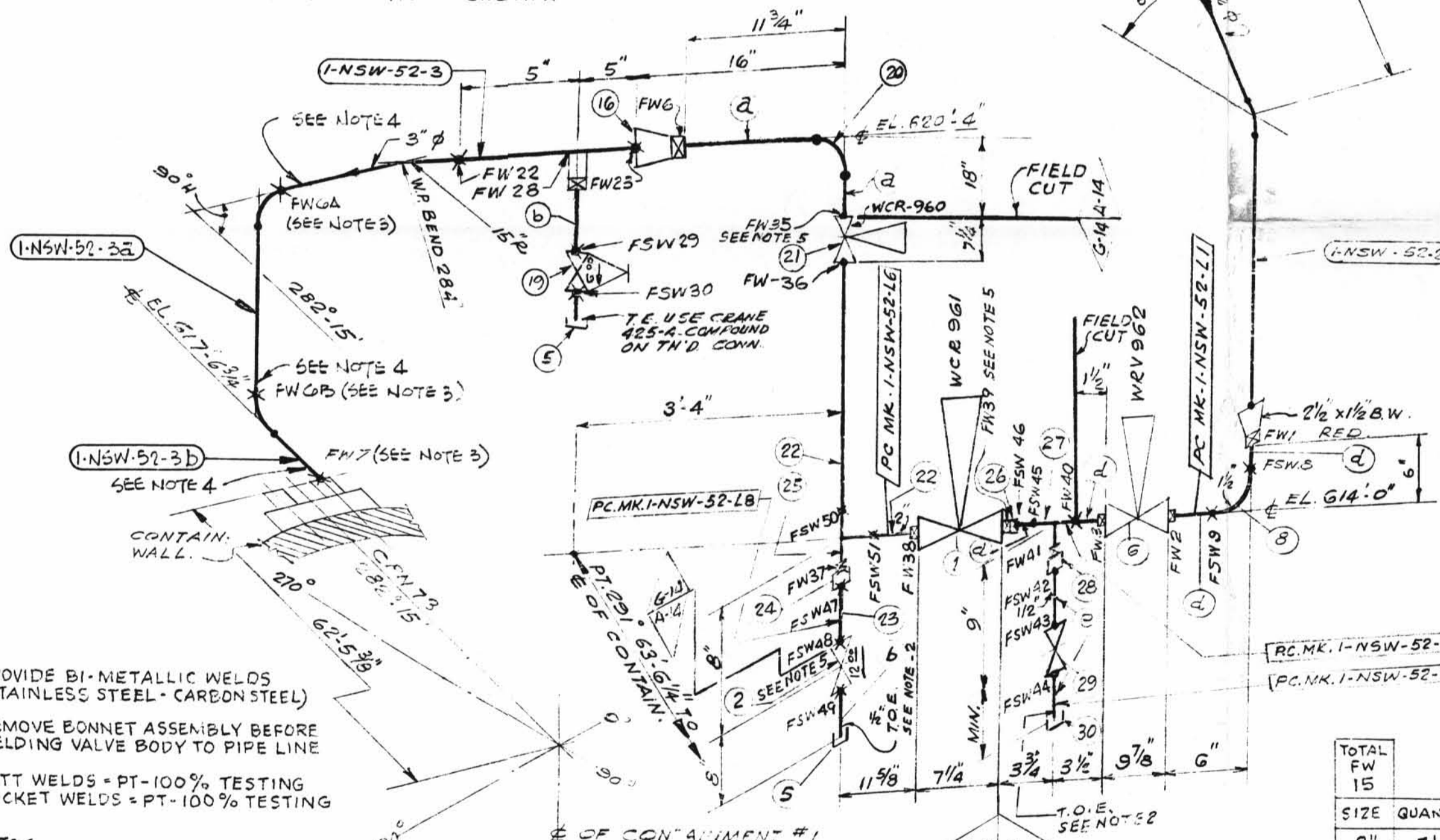


NOTE: TO SUIT FIELD CONDITIONS PC MK-L42 L5 AND 1/2 PLUGS MAY BE INSTALLED OPPOSITE TO INSTALLATION SHOWN.



5. PROVIDE BI-METALLIC WELDS (STAINLESS STEEL-CARBON STEEL)
6. REMOVE BONNET ASSEMBLY BEFORE WELDING VALVE BODY TO PIPE LINE
7. BUTT WELDS - PT-100% TESTING SOCKET WELDS - PT-100% TESTING

NOTES

1. FWS 6, GA, GB & T ARE BW RT-100%. FWS 4, 5 & 13 THRU 17 ARE MT/PT100%
2. USE CRANE ARE-A COMPOUND ON ALL THRD CONNS.
3. FIELD WELDS REFERENCED TO THIS NOTE ARE TO BE MADE AFTER PIPE IS CUT, ALIGNED & ENDS HAVE BEEN PREPARED FOR WELDING TO SUIT AS BUILT CPN.
4. SPOOL TO BE FABRICATED WITH 6\"/>

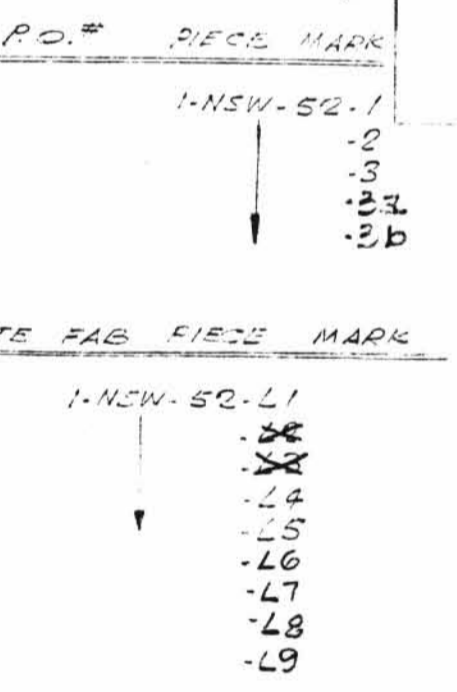
| | |
|----------------------|---------------|
| DESIGN SPEC. | SEE |
| HANGER SEISMIC CLASS | I |
| TEST REQUIREMENTS QL | 4 |
| WELD PROCEDURE | QSL-04 |
| TESTING | SEE NOTE 7 |
| DESIGN SPEC. | DCCPM 102 QCS |
| HANGER SEISMIC CLASS | II |
| TEST REQUIREMENTS QL | 4 |
| WELD PROCEDURE | QSL-01 |
| TESTING | N/A |
| DESIGN SPEC. | DCCPM 103 QCN |
| HANGER SEISMIC CLASS | I |
| TEST REQUIREMENTS QL | 4 |
| WELD PROCEDURE | QSL-04 |
| TESTING | SEE NOTE #1 |

| DESIGN SPEC. | PIPE | FITTINGS | TESTING | ADDITIONAL |
|--------------|--|-------------------|----------------------|------------|
| A-53 | A-106 A-376 A-312 | A-105 A-234 A-182 | N.D.T. | |
| STD. | XY XXY 10 20 30 40 60 80 100 120 140 160 | A-403 A-181 | M.T. P.T. R.T. U.T. | |
| SMIS | WIDD | | PRESSURE TEST | |
| | | | MED. PRESS. DURATION | |

| REV. DATE | DR. CHK. | DESCRIPTION | REMARKS |
|------------|----------|--|------------------------|
| 1 10/19/77 | RDC | ADDED VALVE NUMBER | NO ACTION |
| 2 10-25-77 | ES 71 | REMOVED HOLD ADDED SPOOLS 6A & 6B. ADDED HOLD ON LIVESY SPOOLS L4 & L5 & ADDED ITEM #11 THRU 15 PER FIELD COMMENTS & AEP DWG. 1-5497A-2 | FABR ACTION REQ'D. |
| 3 7/15/78 | ES | REV'D. ITEM #2 Y050636 WAS CY050636 REV'D BY A.E.P. | NO ACTION REQ'D. |
| 4 1-20-76 | HM | REVISED BY A.E.P. DESIGN PER RFC-DC-12-671 TO REFLECT AS BUILT WHEN CHECK VALVE WAS ADDED | NO ACTION REQ'D. |
| 5 1/13/84 | JL | PER RFC DC-12-2549, ADDED: SPEC. G-14, DIM'S, PC MK'S L6, L7, L8 & L9, WELD BOX, NOTES 5, 6 & 7, FIELD WELDS B1 TO 41 & FSW 42 TO 51, ITEMS 21 TO 30, DELETED ITEMS 3, 4, 7 & 18 FROM BIM, PC, MK. L2 & L3, REVISED ITEM NO. 1 IN BIM, ADDED 4.6\"/> | FIELD ACTION REQ'D. |
| 6 1/17/82 | JM | PER RFC-DC-12-2549 REMOVED CPLGS ITEM 17 & FWS 26, 27, 31, 32, 33 & 34 PER FIELD INFO. | NO FIELD ACTION REQ'D. |
| 7 5/12/82 | JM LB | PER RFC DC-12-2549 ITEMS 22 & 23 WERE SCH 80 S. S. | FIELD ACTION REQ'D. |

| OSL | ITEM | QTY | SIZE | DESCRIPTION | MATERIAL | ISO SH. NO. 1312 | TAG NO. OR ASTM MATL. | HEAT NO. |
|-----|---------|--------|--------|---------------------------------------|-------------------|------------------|-----------------------|----------|
| 04 | 1 | 1 | 2" | S.W. DIAPH. CONTROL VA. S.S. | WCR-961 | | | |
| 04 | 2 | 1 | 1/2" | 600# S.W. C.S. GATE VALVE | Y050636 | | | |
| 04 | 5 | 2 | 1/2" | C.S. SOLD CAP 3000# | | | A-181 GR. I OR II | |
| 01 | 6 | 1 | 1/2" | CONTROL VALVE | WRV-962 | | | |
| 04 | 8 | 1 | 1/2" | S.W. C.S. 90° ELL 3000# | | | A-181 GR. I OR II | |
| 04 | 9 | 2 | 1/2" | PLUGS C.S. S.W. 3000# | | | | |
| 04 | 10 | 2 | 1/2" | 700# GLOBE VA. SCRD OR SPOOLS | Y050723 | | | |
| 04 | 11 | 1 | 1/2" | SAFETY SPIRAL WOUND STYLE CO. 1/2\"/> | | | A-181 GR. I OR II | |
| 04 | 12 | 8 | 3/4" | 4 LONG STUD BOLTS | | | A-181 GR. I OR II | |
| 04 | 13 | 16 | 3/4" | NUTS: HEXAGON, HEAVY SERIES | | | A-181 GR. I OR II | |
| 04 | 14 | 4 | 5/8" | 5" LONG HEX HEAD MACH BOLTS | | | A-181 GR. I OR II | |
| 04 | a | 2 | 2" | PIPE (SCH. 80) SMLS. C.S. | 4-106 GR B | | | |
| 04 | b | 1 | 1/2" | | | | | |
| 01 | c | 1 | 2" | | | | | |
| 01 | d | 1 | 1/2" | | | | | |
| 01 | e | 1 | 1/2" | | | | | |
| 04 | 15 | 4 | 3/8" | HEAVY HEX NUT, CLASS 2 TOL. | A-181 GR. I OR II | | | |
| 04 | 16 | 1 | 3/2" | REDUCER | | | A-181 GR. I OR II | |
| 04 | 19 | 1 | 1/2" | 600# C.S. S.W. GLOBE VALVE | Y050736 | | | |
| 04 | 20 | 1 | 2" | SW 90° ELL - 3000# | A-105 II | | | |
| 21 | 1 | 2" | | S.W. DIAPH. CONTROL VA. S.S. | WCR-960 | | | |
| 22 | AS RECD | 2" | | PIPE (SCH. 80S) S.S. | A-312 GR. A-304 | | | |
| 23 | AS RECD | 1/2" | | PIPE (SCH. 80S) S.S. | | | | |
| 24 | AS RECD | 1/2" | | RED. INSERT S.S. 3000# | A-182 GR. A-304 | | | |
| 25 | 1 | 2" | | TEE S.W. S.S. 3000# | | | | |
| 01 | 26 | 1 | 2 1/2" | RED. INSERT C.S. 3000# | A-181 GR. I OR II | | | |
| 27 | 1 | 1 1/2" | | TEE S.W. C.S. 3000# | | | | |
| 28 | 1 | 1 1/2" | | RED. INSERT C.S. 3000# | | | | |
| 29 | 1 | 1/2" | | 600# S.W. C.S. GATE VALVE | Y050636 | | | |
| 30 | 1 | 1/2" | | CAP SCRD C.S. 3000# | A-181 GR. I OR II | | | |

| LABOR COST CONTROL | | LABOR COST CONTROL | |
|--------------------|------------------|--------------------|------------------|
| USE ONLY WITH | | USE ONLY WITH | |
| PIPE SIZE | | PIPE SIZE | |
| SCHEDULE | | SCHEDULE | |
| TYPE | | TYPE | |
| ISO START DATE | | ISO START DATE | |
| ISO FINISH DATE | | ISO FINISH DATE | |
| WORK OPERATION | LINE ITEM NUMBER | WORK OPERATION | LINE ITEM NUMBER |
| HANGER INST. | | HANGER INST. | |
| ERECT | | ERECT | |
| WELD | | WELD | |
| RADIO.G - X-RAY | | RADIO.G - X-RAY | |
| STRESS RELIEVE | | STRESS RELIEVE | |
| MISC. WORK | | MISC. WORK | |



POUR/ZONE No. 105
 REQUIRED COMPLETION DATE
 FABRICATED BY TUBECO

FLOW DIAGRAM 1-5114
 Q.S.L. SEE DESIGN
 WELD PROCEDURE CODE STAMP

REVISION RECORD

| NO. | DATE | DESCRIPTION |
|-----|------|-------------|
| | | |

1NSW-52
 Instrument Room Ventilation
 Unit 4 Supply Line

LIVSEY & COMPANY, INC.
 DONALD C. COOK NUCLEAR PLANT

DWN: SG DATE: 8-25-77
 CKD: GN DATE: 10-5-77
 ISSUED

CONTAIN. VICINITY
 DWG. NO.
 1-NSW-52

REF. DWG. 1-5497A