

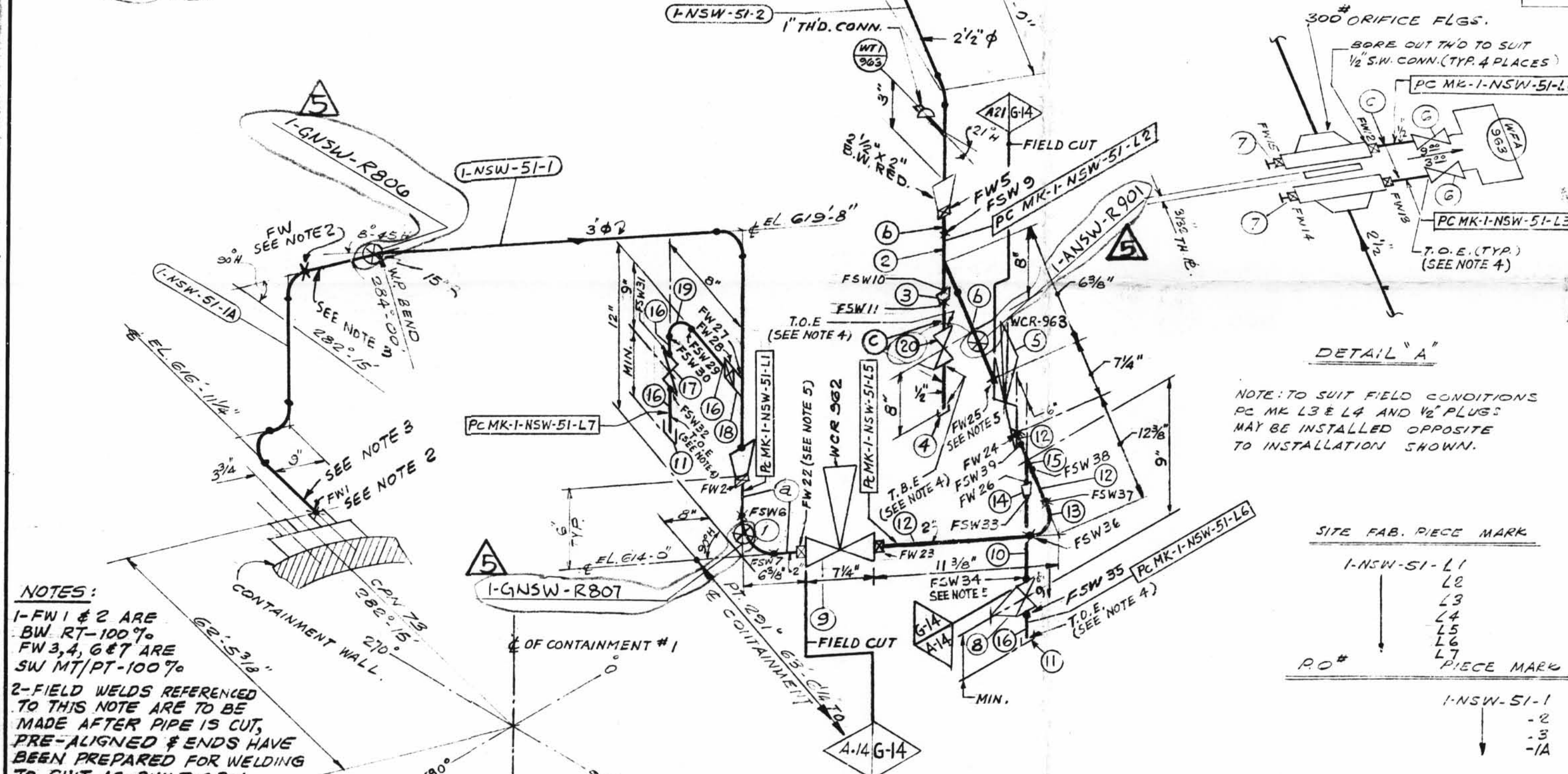
INDICATES LOCATION OF UNIT SUPPORT AND SUPPORT DETAIL NUMBER

SUPPORT MARK NUMBERS SHOWN HERE FOR GENERAL INFORMATION OF SHOP AND FIELD FOR EXACT LOCATION OF PIPE SUPPORT DETAIL

HANGER MARK NO
 1-GNSW-R800
 1-GNSW-R807
 1-GNSW-R808
 1-ANSW-R901

OSL	ITEM	QTY	SIZE	DESCRIPTION	TAG NO OR ASTM MATL
04	17	1	1/2"	600# C.S., S.W. GATE VALVE	Y050G36
	18	1	1/2"	3000# C.S. HALF CPLG.	A-181 GR. I OR II
	19	1	1/2"	3000# C.S., S.W. 90° ELL.	A-181 GR. I OR II
01	20	1	1/2"	150# SCRD GATE VALVE, BRASS OR BRONZE	Y-050Q22

OSL	ITEM	QTY	SIZE	DESCRIPTION	TAG NO OR ASTM MATL	HEAT NO
04	1	1	2"	C.S. S.W. 90° ELL 3000#	GR. I OR II	
01	2	1	2"	C.S. S.W. TEE 3000#	"	
01	3	1	2"	RED INSERT 3000#	"	
01	4	1	1/2"	SCRD CAP 3000#	"	
04	5	1	2"	S.W. DIAPH. CONTROL VALVE, S.S. WCR-963	Y050T23	
01	6	2	1/2"	200# SCRD GLOBE VA BRASS OR BRASS	Y050T23	
01	7	2	1/2"	PLUGS C.S. 3000#	A-181 GR. I OR II	
04	8	1	1/2"	C.S., S.W. GLOBE VALVE	Y050T36	
04	9	1	2"	S.W. DIAPH. CONTROL VALVE, S.S.	WCR-962	
	10	AS REQD	1/2"	PIPE (SCH. 80S) SMLS., S.S.	A-312 GR. TP-304	
	11	2	1/2"	3000# SCRD. CAP, C.S.	A-181 GR. I OR II	
04	12	AS REQD	2"	PIPE (SCH. 80) SMLS CS	A-106 GR. B	
01	13	1	2"	90° ELL., S.W., S.S. 3000#	A-182 GR. F-304	
	14	1	2 1/2"	RED. INSERT, 3000#, S.S.		
	15	1	2"	3000# S.S., S.W. TEE		
	16	AS REQD	1/2"	PIPE (SCH. 80) SMLS., C.S.	A-106 GR. B	

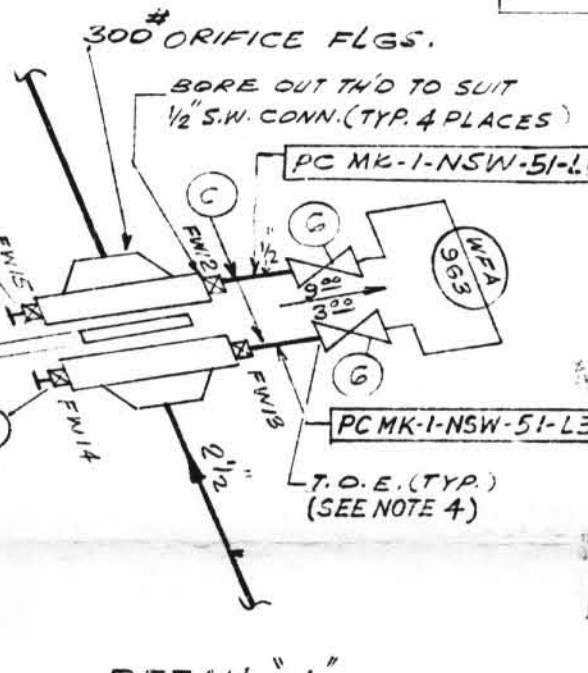


NOTES:
 1-FW 1 & 2 ARE BW RT-100%
 FW 3, 4, 6 & 7 ARE SW MT/PT-100%
 2-FIELD WELDS REFERENCED TO THIS NOTE ARE TO BE MADE AFTER PIPE IS CUT, PRE-ALIGNED & ENDS HAVE BEEN PREPARED FOR WELDING TO SUIT AS-BUILT C.P.N.
 3-SPOOL TO BE FABRICATED WITH 6" EXTRA PIPE & PLAIN END TO FACILITATE INSTALLATION.
 4-USE CRANE #25-A COMPOUND ON ALL THREADED CONNECTIONS.
 5-PROVIDE BI-METALLIC WELDS. (STAINLESS STEEL-CARBON STEEL.)
 6-REMOVE BONNET ASSEMBLY BEFORE WELDING VALVE BODY TO PIPE LINE.
 7-BUTT WELDS: RT-100% TESTING. SOCKET WELDS: PT-100% TESTING.

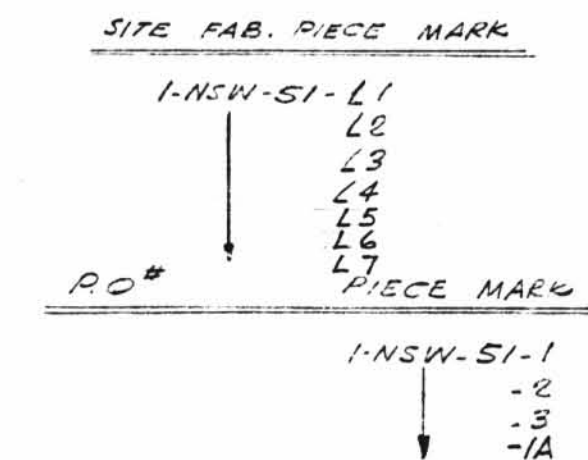
DESIGN SPEC. DCCPM 102 QCS
 HANGER SEISMIC CLASS I
 TEST REQUIREMENTS QL 4
 WELD PROCEDURE QSL 04
 TESTING SEE NOTE 7

DESIGN SPEC.	HANGER SEISMIC CLASS	TEST REQUIREMENTS	WELD PROCEDURE	TESTING
A-21 DESIGN SPEC. DCCPM 102 QCS	I	QL 4	QSL 04	SEE NOTE 7

PIPE	FITTINGS	TESTING	ADDITIONAL
A-53 A-106 A-376 A-312 GR. B GR. TR-204	A-105 A-224 A-182 N.D.T. M.T. P.T. R.T. U.T.	RT UT	
STD. XY XXY 10 20 30 40 60 80 100 120 140 160	A-403 A-181	PRESSURE TEST	
SMLS WIDD		MED. PRESS. DURATION	



NOTE: TO SUIT FIELD CONDITIONS PC MK L3 & L4 AND 1/2\"/>



REV	DATE	DR	DESCRIPTION	REMARKS
1	10/14/72	I.F.	REVISED BY NPS DESIGNS: REMOVED HOLD ON PC MK 1-NSW-51-1, ADDED: PC MK 1-NSW-51-1A, NOTES 283, FWS PER DWG. 1-5497A REVISION 5	FIELD ACTION REQ'D
2	10/16/72	N.M.	REVISED BY A.E.P. DESIGN PER RFC-DC-12-671 TO REFLECT AS BUILT WHEN CONTROL VALVE WAS ADDED	NO FIELD ACTION REQ'D
3	11/3/72	WT	PER RFC-DC-12-2549, ADDED: PIPE SPEC. G-14, DIMS. 1, PC MK L5, L6 & L7, WELD BOX NOTES 5, 6 & 7, FIELD WELDS FW 22 TO 28, FSW 29 TO 39 & ITEMS 9 TO 19 TO B/M, REVISED ITEM NOS. 4 & 5 IN B/M, DIM. 11 3/8 WAS 10 3/8, ADDED 20 1/4.	FIELD ACTION REQ'D
4	11/16/72	JM	PER RFC-DC-12-2549 ITEMS 10 & 12 WERE SCH. 40S PIPE	FIELD ACTION REQ'D
5	8/1/73	DW	PER RFC-DC-12-2876 REV'D ITEM 10 QTY 3 TO 2, ADDED ITEM 20 AND SUPPORT MARK NOS. SUPERSEDED HGR 150 1-GNSW-51, ALL ABOVE TO REFLECT AS-BUILT CONDITIONS.	NO FIELD ACTION REQ'D

LABOR COST CONTROL	LABOR COST CONTROL
USE ONLY WITH	USE ONLY WITH
PIPE SIZE	PIPE SIZE
SCHEDULE	SCHEDULE
TYPE	TYPE
ISO START DATE	ISO START DATE
ISO FINISH DATE	ISO FINISH DATE
WORK OPERATION	WORK OPERATION
LINE ITEM NUMBER	LINE ITEM NUMBER
HANGER INST.	HANGER INST.
ERECT	ERECT
WELD	WELD
RADIO G - X-RAY	RADIO G - X-RAY
STRESS RELIEVE	STRESS RELIEVE
MISC WORK	MISC WORK

SIZE	QUAN.	FW	TOTAL FW
3	20	2	18
2 1/2	17	-	
2	3	12	
1 1/2	1	7	

SIZE	QUAN.	FW
2"	2'-0"	9
1 1/2"	2'-0"	9

POUR ZONE No. 105 FLOW DIAGRAM 1-5114A
 REQUIRED COMPLETION DATE QSL
 FABRICATED BY TUBECO WELD PROCEDURE

REVISION RECORD

LIVSEY & COMPANY, INC.
 DONALD C. COOK NUCLEAR PLANT

DWN JG DATE 3-24-74 CONTAINMENT VICINITY
 CRD GN DATE 10-5-71 DWG. NO.
 ISSUED 1-NSW-51 REV. 5
 REF DWG. 1-5497A