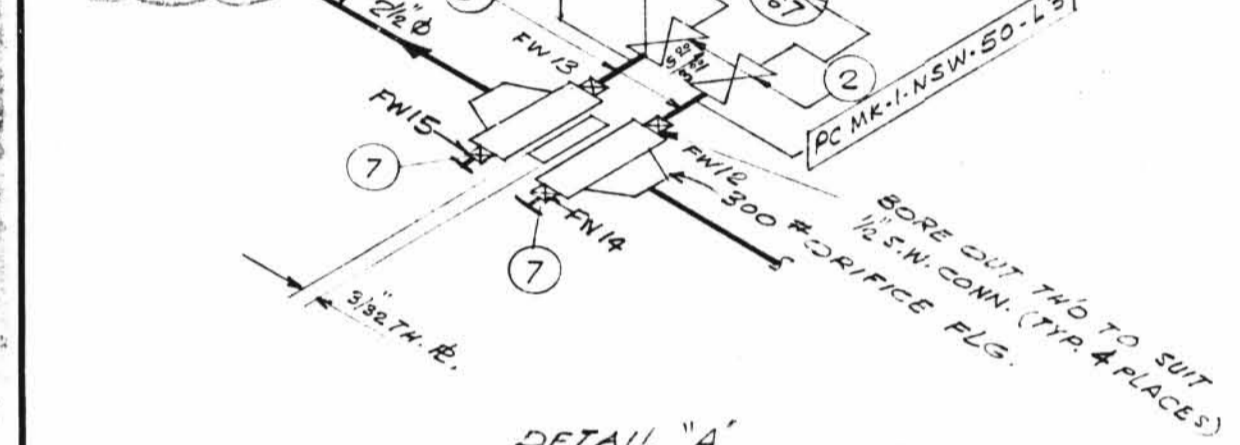


TOTAL FW 18

INDICATES LOCATION OF PIPE SUPPORT AND SUPPORT DETAIL NUMBER

SUPPORT MARK NUMBERS SHALL BE FOR GENERAL APPROXIMATE LOCATION OF SUPPORT ONLY FOR EXACT LOCATIONS SEE PIPE SUPPORT DETAIL

HANGER MARK NOS
 1-GNSW-R803
 1-GNSW-R804
 1-GNSW-R805
 1-ANSW-R900



NOTE: TO SUIT FIELD CONDITIONS PC MK L39 L4 AND 1/2\"/>

- NOTES:
- FW 1 & 2 ARE BW RT-100%. FW 3, 4, 6 & 7 ARE SW MT-100%.
 - FIELD WELDS REFERENCED TO THIS NOTE ARE TO BE MADE AFTER PIPE IS CUT, PRE-ALIGNED & ENDS HAVE BEEN PREPARED FOR WELDING TO SUIT AS-BUILT CON.
 - SPOOL TO BE FABRICATED WITH 6\"/>

SIZE	QUAN.	FW	TOTAL FW	FOR REV. 3 ONLY
3	18	4	18	
2 1/2	3	14		
2	3	14		
1/2	1	7		

G-14 DESIGN SPEC. DCCPM 109 3CN
 HANGER SEISMIC CLASS I
 TEST REQUIREMENTS QL 4
 WELD PROCEDURE QSL-04 TESTING SEE NOTE 5

A-21 DESIGN SPEC. DCCPM 102 3CE
 HANGER SEISMIC CLASS II
 TEST REQUIREMENTS QL-1
 WELD PROCEDURE QSL-01 TESTING N/A

A-14 DESIGN SPEC. DCCPM 103 3CN
 HANGER SEISMIC CLASS I
 TEST REQUIREMENTS QL-4
 WELD PROCEDURE QSL-04 TESTING SEE NOTE #1

DESIGN SPEC	HANGER SEISMIC CLASS	TEST REQUIREMENTS	MATERIAL CLASS	PIPE	FITTINGS	TESTING	ADDITIONAL
A-21	II	QL-1		A-33 A-106 A-376 A-312	A-105 A-234 A-182 N.D.T.	M.T. P.T. RT. UT.	
A-14	I	QL-4		A-33 A-106 A-376 A-312	A-105 A-234 A-182 N.D.T.	M.T. P.T. RT. UT.	

QTY	ITEM	SIZE	DESCRIPTION	MATERIAL	ISO. SH. NO. 1310
04	18	1/2"	PIPE (SCH. 80) SMLS. C.S.	A-106	
01	19	1/2"	3000\"/>		

REV.	DATE	DR. / ENK.	DESCRIPTION	REMARKS
1	10/11/72	JF	REVISED BY NPS DESIGNS: REMOVED HOLD ON PC MK 1-NSW-50-1, ADDED: PC MKS 1-NSW-50-1A, 1B & 1C, NOTES 2 & 3, FWS. PER DWG 1-5497A, REVISION 5	FIELD ACTION REQ'D
2	1/20/76	MM	REVISED BY A.E.P. DESIGN PER REC-DC-12-671 TO REFLECT AS BUILT WHEN CONTROL VALVE WAS ADDED.	NO FIELD ACTION REQ'D
3	1/13/82	K.A. E.L.G.	PER REC-DC-12-2549 ADDED: PIPE SPEC'G DIM'S, PC MK L5, L6, L7, WELD BOX, NOTES 5, 6 & 7, FIELD WELDS FW 26 TO 32, FSW 33 TO 43 ITEM NBS 9 TO 19 TO B.M. REVISED ITEM NBS 15, 6 & B IN B.M. DELETED PC MK L2, ADDED DIM'S FOR OFFSET.	FIELD ACTION REQ'D
4	5/17/82	JM LB	PER REC-DC-12-2549 ITEM'S 10 & 16 WERE SCH. 40.3 PIPE	FIELD ACTION REQ'D
5	5/1/84	DK/ LB	PER REC-DC-12-2876 ADDED ITEM 20 AND SUPPORT MARK NOS, SUPERSEDED HGR ISO 1-GNSW-50-1 ALL ABOVE TO REFLECT AS-BUILT CONDITIONS.	NO FIELD ACTION REQ'D

LABOR COST CONTROL		LABOR COST CONTROL	
USE ONLY WITH		USE ONLY WITH	
PIPE SIZE		PIPE SIZE	
SCHEDULE		SCHEDULE	
TYPE		TYPE	
ISO START DATE		ISO START DATE	
ISO FINISH DATE		ISO FINISH DATE	
WORK OPERATION	LINE ITEM NUMBER	WORK OPERATION	LINE ITEM NUMBER
HANGER INST.		HANGER INST.	
ERECT		ERECT	
WELD		WELD	
RADIO-G - X-RAY		RADIO-G - X-RAY	
STRESS RELIEVE		STRESS RELIEVE	
MISC. WORK		MISC. WORK	

POUR ZONE No. 102 FLOW DIAGRAM 1-514A
 REQUIRED COMPLETION DATE Q.S.L.
 FABRICATED BY TUBECO WELD PROCEDURE

REVISION RECORD

NO.	DATE	DESCRIPTION
1		

LIVSEY & COMPANY, INC.
 DONALD C. COOK NUCLEAR PLANT
 DWN-JG DATE 2-21-77 CONTAIN. VICINITY
 CKD-GN DATE 10-8-77 DWG. NO.
 ISSUED 1-NSW-50 REV. 5
 REF. DWG. 1-5497A