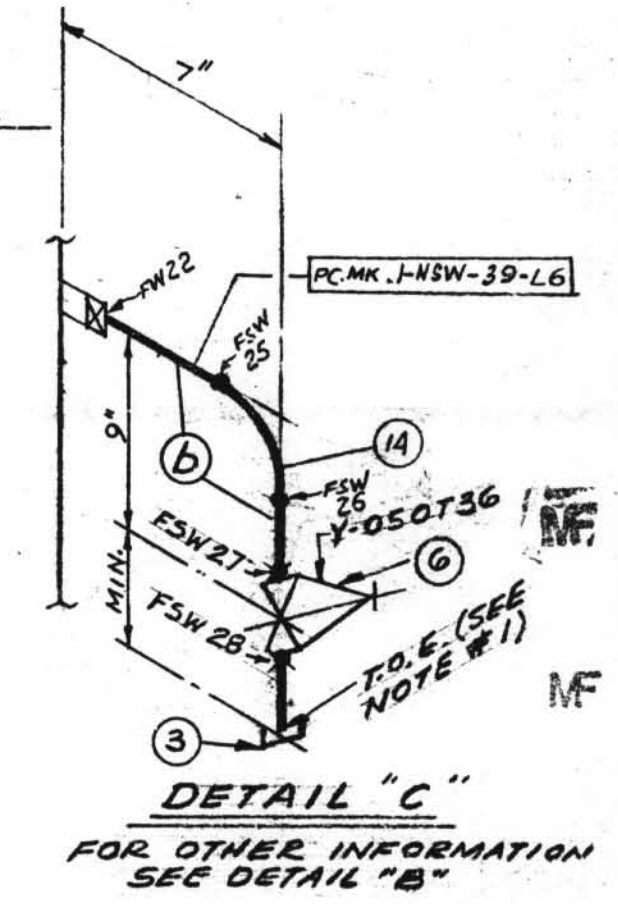
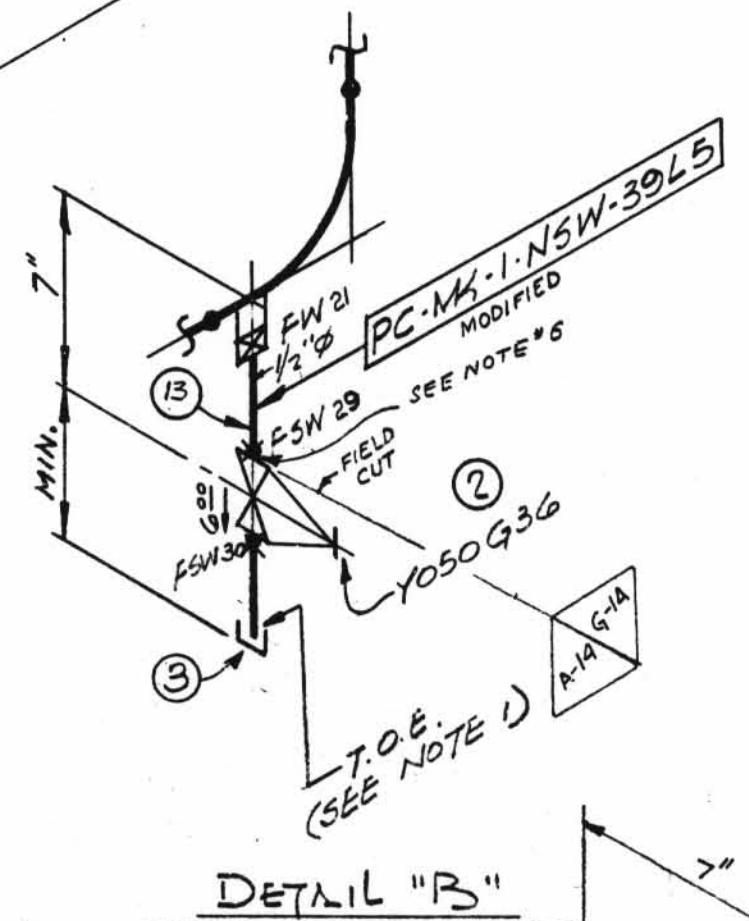
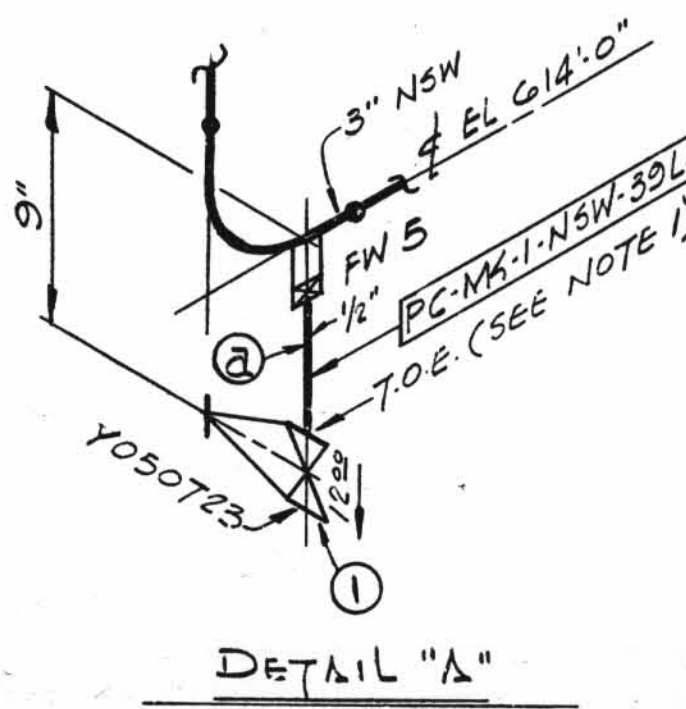
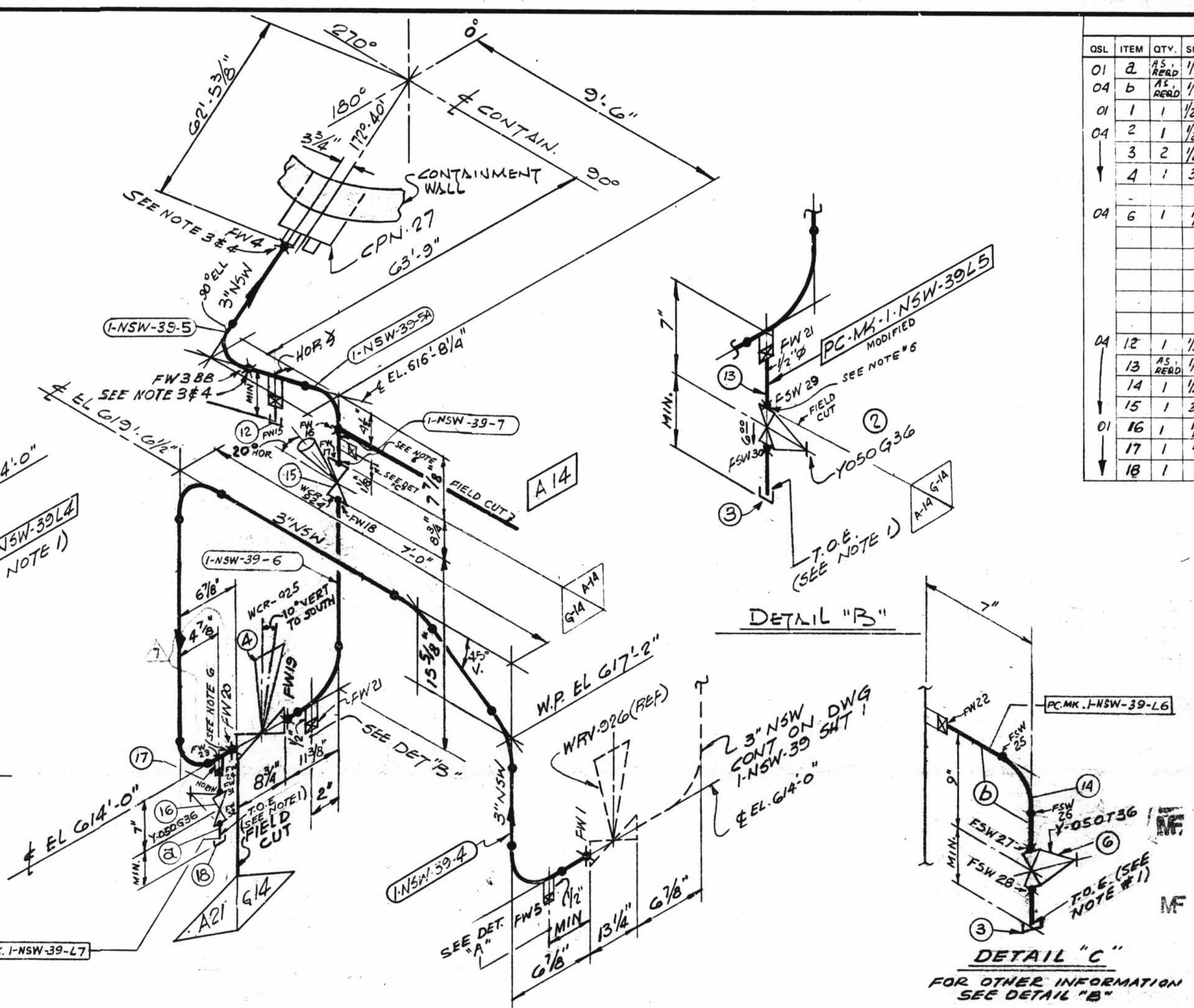
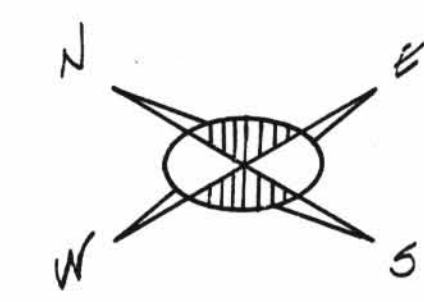


TOTAL FW 14



| SIZE | QUAN. | FW |
|------|-------|----|
| 3"   | 6     | 5  |
| 1/2" | 3     | 13 |

NOTES:

- USE CRANE 425-A COMPOUND ON ALL THREADED CONNECTIONS
- BUTTWELDS-RT-100% TESTING  
SOCKETWELDS-PT-100% TESTING
- FABRICATOR TO MAKE THIS END OF SPOOL 6" LONGER WITH PLAIN END TO FACILITATE INSTALLATION.
- FW'S PERTAINING TO THIS NOTE ARE TO BE MADE AFTER PIPE IS PRE-ALIGNED & ENDS HAVE BEEN PREPARED FOR WELDING TO SUIT AS BUILT CPN.
- CARB. STL. 2" UNDER  
CARB. STL. 2 1/2" UP
- PROVIDE BI-METALLIC WELDS (STAINLESS STEEL-CARBON STEEL)
- REMOVE BONNET ASSEMBLY BEFORE WELDING VALVE BODY TO PIPE LINE.

| P.O# | PIECE MARKS | SITE FAB | PIECE MARKS |
|------|-------------|----------|-------------|
| 506  | 1-NSW-39-4  |          | 1-NSW-39L4  |
| 505  | -5          |          | L5          |
| 533  | -5A         |          | L6          |
|      | -5B         |          | L7          |
|      | -6          |          |             |
|      | -7          |          |             |

G-14 DESIGN SPEC. DCCPM 109QCX  
 HANGER SEISMIC CLASS I  
 TEST REQUIREMENTS QL  
 WELD PROCEDURE QSL 04 TESTING SEE NOTE # 2

| DESIGN SPEC.                   | SEE | DESIGN |
|--------------------------------|-----|--------|
| A-14 DESIGN SPEC. DCCPM 109QCX |     | DESIGN |
| HANGER SEISMIC CLASS I         |     | CODE   |
| TEST REQUIREMENTS QL 4         |     | STAMP  |
| WELD PROCEDURE SEE NOTE 6      |     |        |
| QSL 04 TESTING SEE NOTE 2      |     |        |

| PIPE  | FITTINGS | TESTING | ADDITIONAL |
|-------|----------|---------|------------|
| A-33  | A-106    | A-312   | A-103      |
| A-376 | A-324    | A-182   | A-104      |
| A-312 | A-234    | A-182   | A-105      |
| A-376 | A-234    | A-182   | A-106      |
| A-312 | A-234    | A-182   | A-107      |
| A-376 | A-234    | A-182   | A-108      |
| A-312 | A-234    | A-182   | A-109      |
| A-376 | A-234    | A-182   | A-110      |

| OSL | ITEM | QTY. | SIZE | DESCRIPTION                         | TAG NO. OR ASTM MATL. | HEAT NO. |
|-----|------|------|------|-------------------------------------|-----------------------|----------|
| 01  | a    | 2    | 1/2" | PIPE (SMLS, SCH. 80, C.S.)          | A-106 GR. B           |          |
| 01  | b    | 1    | 1/2" | PIPE (SMLS, SCH. 80, C.S.)          | A-106 GR. B           |          |
| 01  | 1    | 1    | 1/2" | 200° BRONZE OR BRASS THRD GLOBE VA. | Y-050T23              |          |
| 04  | 2    | 1    | 1/2" | 600° C.S. S.W. GATE VALVE           | Y-050G36              |          |
| 04  | 3    | 2    | 1/2" | 3000° C.S. THRD CAP                 | A-181 GR 1 OR 2       |          |
| 04  | 4    | 1    | 3"   | B.W. DIAPH. CONTROL VA. S.S.        | WCR-925               |          |
| 04  | 6    | 1    | 1/2" | C.S. S.W. GLOBE VALVE               | Y-050T36              |          |
| 04  | 12   | 1    | 1/2" | 3000° C.S. S.W. CAP                 | A-181 GR 1 OR 2       |          |
| 04  | 13   | 1    | 1/2" | PIPE (SCH. 40 S) SMLS. S.S.         | A-312 GR TP-304       |          |
| 04  | 14   | 1    | 1/2" | 3000° S.W. C.S. 90° ELL.            | A-181 GR 1 OR 2       |          |
| 04  | 15   | 1    | 3"   | B.W. DIAPH. CONTROL VA. S.S.        | WCR-924               |          |
| 01  | 16   | 1    | 1/2" | 600° S.W. GATE VALVE C.S.           | Y-050G36              |          |
| 01  | 17   | 1    | 1/2" | 3000° C.S. HALF CPLG.               | A-181 GR 1 OR 2       |          |
| 01  | 18   | 1    | 1/2" | 3000° C.S. THRD. CAP                | A-181 GR 1 OR 2       |          |

| REV. | DATE     | DR. CHK.   | DESCRIPTION                                                                                                                                                                                                 | REMARKS                              |
|------|----------|------------|-------------------------------------------------------------------------------------------------------------------------------------------------------------------------------------------------------------|--------------------------------------|
| 1    | 11/30/71 | SG, GN     | RELEASED PIPING AT CPN. ADDED: FWS A 388; PC MK 5A 15B; ITEM 4; P.O. #; NOTES 3 & 4; TOTAL NO. OF FW; WELD PROCEDURE REV: NOTE 2. PER DWG 1-5497-3                                                          | FIELD ACTION REQD<br>FAB ACTION REQD |
| 2    | 3/8/72   | RKG, DB    | DELETED: DRAIN VALVE Y-050G36, WELD PROCEDURE NOTE, PER DWG 1-5497-4                                                                                                                                        | FIELD ACTION REQD                    |
| 3    | 7/14/75  | P.A.       | REVD.; ITEM # 2, Y-050G36 WAS CY-050G36 REV'D BY A.E.P.                                                                                                                                                     | NO ACTION REQD                       |
| 4    | 20-76    | W.M.       | REVISED BY A.E.P. DESIGN PER DCC-DC-1113-GT170. CHECK VALVE WAS ADDED.                                                                                                                                      | FIELD ACTION REQD                    |
| 5    | 2/2/78   | H.B.       | PER RFC#12-1430 DELETE ITEM 6 & ADD ITEM 7, 8, 9, 10, 11. SEE DETAIL 'D'.                                                                                                                                   | FIELD ACTION REQD                    |
| 6    | 1/13/82  | K.A., DK   | PER RFC#12-2549 ADD: PIPE SPEC. G-14, DIM. 1.2, DIM. 6.75, 4.5, 1.7 WELD BOX, NOTES 6 & 7, FIELD WELLS FW5T024, FW5T030, FW5T032, ITEM #S 12 THRU 18 TO A.M., REVISED. ITEM NOS. 22 & 23, MODIFIED PER L.S. | FIELD ACTION REQD                    |
| 7    | 3/10/82  | J.M., E.G. | PER RFC#12-2549 RELOCATED DR. VA #16.                                                                                                                                                                       | FIELD ACTION REQD                    |

| LABOR COST CONTROL |                  | LABOR COST CONTROL |                  |
|--------------------|------------------|--------------------|------------------|
| USE ONLY WITH      |                  | USE ONLY WITH      |                  |
| PIPE SIZE          |                  | PIPE SIZE          |                  |
| SCHEDULE           |                  | SCHEDULE           |                  |
| TYPE               |                  | TYPE               |                  |
| ISO START DATE     |                  | ISO START DATE     |                  |
| ISO FINISH DATE    |                  | ISO FINISH DATE    |                  |
| WORK OPERATION     | LINE ITEM NUMBER | WORK OPERATION     | LINE ITEM NUMBER |
| HANGER INST.       |                  | HANGER INST.       |                  |
| ERECT              |                  | ERECT              |                  |
| WELD               |                  | WELD               |                  |
| RADIO-G - X-RAY    |                  | RADIO-G - X-RAY    |                  |
| STRESS RELIEVE     |                  | STRESS RELIEVE     |                  |
| MISC. WORK         |                  | MISC. WORK         |                  |

POUR ZONE No. A-14  
 REQUIRED COMPLETION DATE  
 FABRICATED BY: WJBCO  
 REVISION RECORD  
 NO. DATE DESCRIPTION  
 1NSW-39 (sheet 2 of 2)  
 Upper Containment Ventilation  
 Unit 2 Supply Line  
 LIVESY & COMPANY, INC.  
 DONALD C. COOK NUCLEAR PLANT  
 DWN: WJP DATE: 4/17/82  
 CDR: G.M. DATE: 4/17/82  
 ISSUED  
 REF. DWG: 1-5497-2