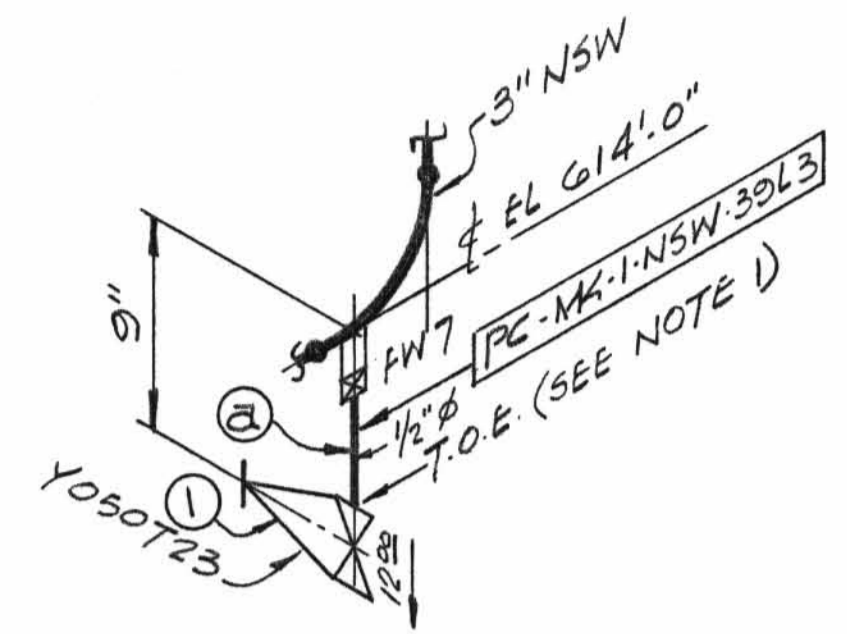
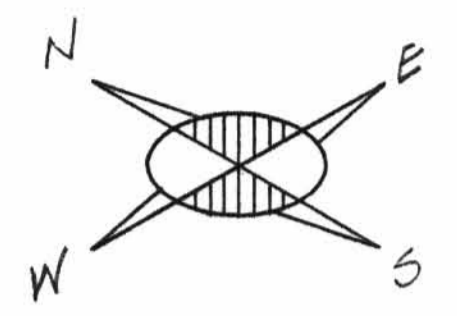
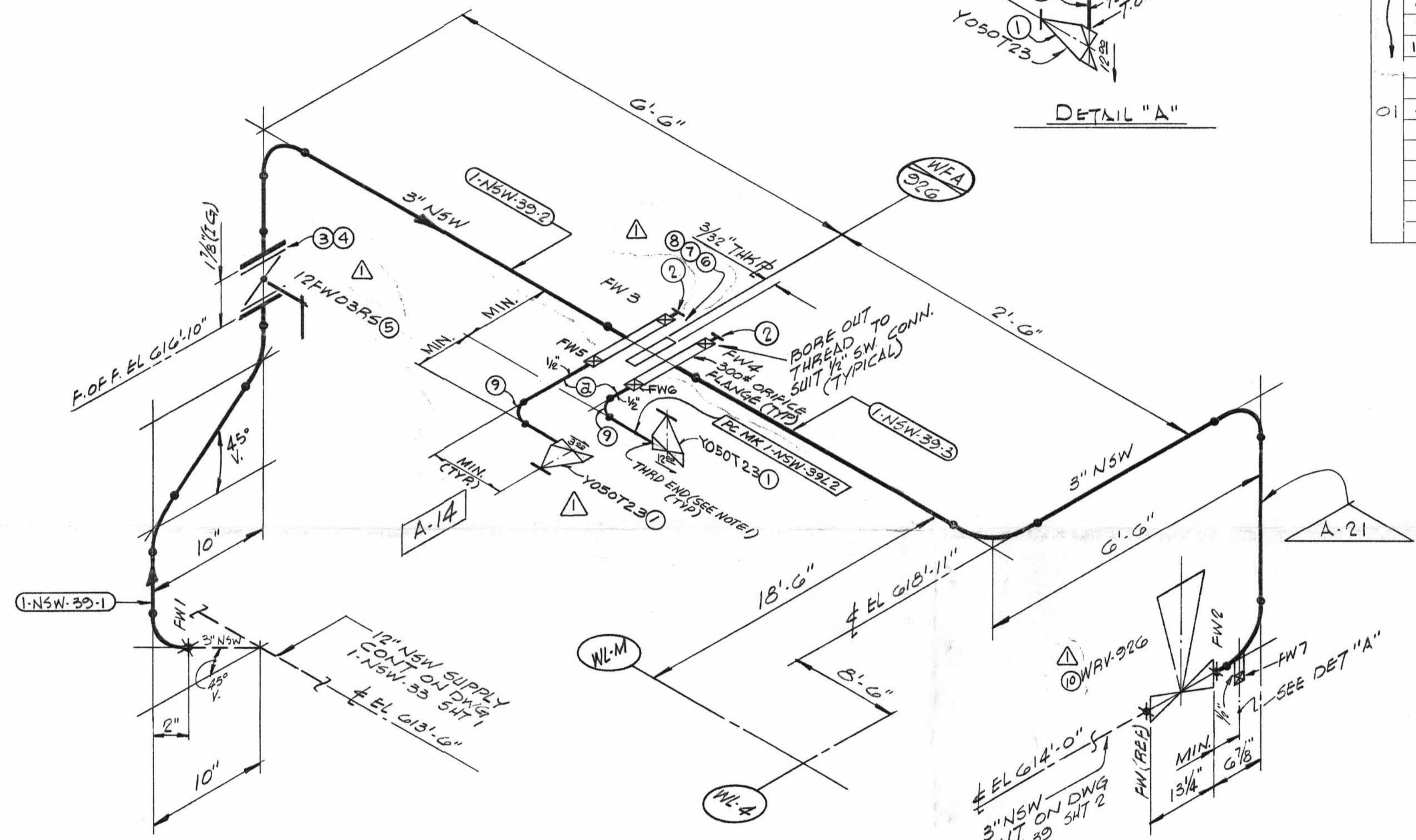


TOTAL FW Δ



DETAIL "A"



- NOTES**
1. USE CRANE 425-A COMPOUND ON ALL THREADED CONNECTIONS.
 2. PIPE 2" ϕ UNDER CS (LATER).
PIPE 2 1/2" ϕ ABOVE CS (LATER).

MATERIAL 150. SHT. NO. 1299

QSL	ITEM	QTY.	SIZE	DESCRIPTION	TAG NO. OR ASTM MAT'L	HEAT NO.
01	1	3	1/2"	200# BRONZE OR BRASS THREADED GLOBE VALVE	Y050T23	
	2	2	1/2"	3000# C.S. PLUG	A-181 GR. 10B II	
	3	4	-	5/8" X 5" LG HEX MACHINE BOLT	A-307 GR. B	
	4	4	5/8"	HEAVY HEX. NUT		
	5	1	3"	125# BUTTERFLY WAFER VA, CI	12FW03RS	
	6	8	-	3/4" X 4 1/4" LG STUD BOLT	A-193 GR. B7	
	7	16	3/4"	HEAVY HEX NUT	A-194 GR. 2H	
	8	2	3"	FLEXITALLIC GASKET STYLE CG TYPE 304 SS & ASBESTOS FILLER, 1/8" THK		
	9	2	1/2"	3000# C.S. SW 90° ELL	A-181 GRT OR II	
	10	1	3"	REGULATING VALVE	WRV-926	
01	2	AS REQD	1/2"	PIPE (SCH. 80, SMLS, C.S.)	A106 GR. B	

REV	DATE	DR. CHK.	DESCRIPTION	REMARKS.
1	5/8/72	SG GN	ADDED: ITEMS 3 THRU 10; BOX FOR TOTAL NO. OF FW'S; RO.#; NOTE 2; REVISED: PIPING FOR WFA-926; PER AEP DWG 1-5497-4.	FIELD ACTION REQD

LABOR COST CONTROL		LABOR COST CONTROL	
USE ONLY WITH		USE ONLY WITH	
PIPE SIZE		PIPE SIZE	
SCHEDULE		SCHEDULE	
TYPE		TYPE	
ISO START DATE		ISO START DATE	
ISO FINISH DATE		ISO FINISH DATE	
WORK OPERATION	LINE ITEM NUMBER	WORK OPERATION	LINE ITEM NUMBER
HANGER INST.		HANGER INST.	
ERECT		ERECT	
WELD		WELD	
RADIO-G - X-RAY		RADIO-G - X-RAY	
STRESS RELIEVE		STRESS RELIEVE	
MISC. WORK		MISC. WORK	

P.O. # PIECE MARKS SITE FAB PIECE MKS.

Δ 519 1-NSW-39-1 1-NSW-39L1
-2 L2
-3 L3

N.P.S. DESIGNS

FABRICATOR NOTE: FABRICATION MUST CONFORM TO LATEST A.E.P. ABRGT. DWGS.

SIZE	QTY	NO
3"	25'-0"	2
1 1/2"	3'-0"	9

DESIGN SPEC.	HANGER SEISMIC CLASS	TEST REQUIREMENTS	MATERIAL CLASS	PIPE	FITTINGS	TESTING	ADDITIONAL
DCCPM102GCS	II	QL1	A-21 SPEC 104	A-53 A-106 A-376 A-312	A-105 A-234 A-182	N.D.T. N/A	
				STD. XY XXY 10 20 30 40 60 80 100 120 140 160	A-403 A-181	PRESSURE TEST	
				SMLS WLD		MED. PRESS. DURATION	

REVISION RECORD		LIVSEY & COMPANY, INC.	
NO.	DATE	DESCRIPTION	
		DONALD C. COOK NUCLEAR PLANT	
1NSW-39 (sheet 1 of 2)		Aux. BLDG.	
Upper Containment Ventilation Unit 2 Supply Line		DWN: N/P DATE: 9/7/77	
		CKD: GN DATE: 9-24-71	
		ISSUED	
		REF. DWG. 1-5497-2	
		DWG. NO. 1-NSW-39 SHT 1 OF 2	