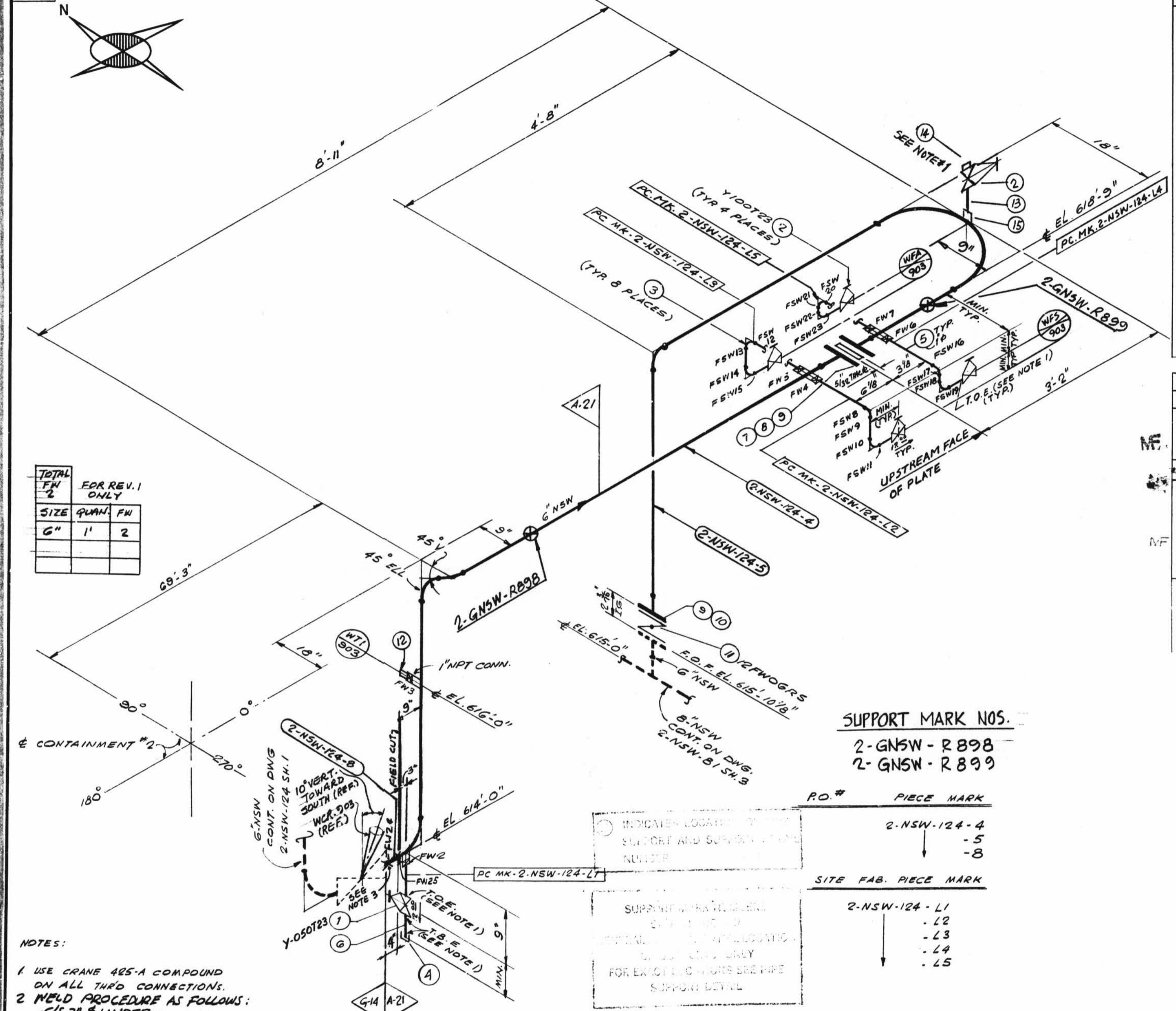


TOTAL FW 23



TOTAL FW	FOR REV. 1 ONLY
SIZE	QUAN. FW
6"	1 2
1/2"	1 1

NOTES:

- USE CRANE 485-A COMPOUND ON ALL THRD CONNECTIONS.
- WELD PROCEDURE AS FOLLOWS:  
C/S 2" & UNDER - GJ 2 1/2" & OVER -
- PROVIDE BI-METALLIC WELDS (STAINLESS STEEL-CARBON STEEL)

SIZE	QUAN.	FW
6	23	1
1	4	21
1/2	1	1

ISO SHT. NO. 2127

OSL	ITEM	QTY.	SIZE	MATERIAL DESCRIPTION	TAG NO. OR ASTM MAT'L.	HEAT NO.
01	1	1	1/2"	3000# SCRD. GLOBE VA BRONZE OR BRASS GASKET	Y050T23	
	2	5	1"	200# SCRD GLOBE VA OR BRASS	Y-100T23	
	3	8	1"	3000# S.W. C.S. 90° ELL	A-181 GR. 2 OR II	
	4	1	1/2"	3000# SCRD. CAP C.S.		
	5	AS REQD	1"	PIPE (SCH. 80) SMLS. C.S.	A-106 GR. B	
	6	AS REQD	1/2"	PIPE (SCH. 80) SMLS. C.S.		
	7	2	6"	1/2" THK. FULL FACE COMB. ASBESTOS RUBBER BONDED GASKET		
	8	8	3/4"	5/8" LG. HEX. HD. MACH. BOLT	A-307 GR. B	
	9	16	3/4"	HEAVY HEX. NUT. CL. 2 T.O.L.		
	10	8	3/4"	5/8" LG. HEX. HD. MACH. BOLT		
	11	1	6"	1/2" C.I. WAFER BUTTERFLY VA	1/2FW06RS	
	12	1	1"	BI-METAL THERM. WELL	WTI-903	
	13	AS REQD	1"	PIPE (SCH. 80) SMLS. C.S.	A-106 GR. B	
	14	1	1"	3000# THRD. PLUG, C.S.	A-181 GR. 2 OR II	
	15	1	1"	3000# HALF CPLG., C.S.		

REVISION RECORD

NO.	DATE	DR. CHK.	DESCRIPTION	FIELD ACTION REQ'D
1	9/11/87	A.G. DR.	PER RFC-DC-12-2549, ADDED FIELD WELD BOX, DIM. PC-MK #8, FIELD WELDS 24 & 25. NOTE 3	FIELD ACTION REQ'D
2	7/12/89	SG	PER RFC-DC-12-2549 REVISE DIM. PER FIELD VERIF.	FIELD ACTION REQ'D
3	7/12/89	EBB	TO REFLECT AS-FOUND CONDITIONS FOR RFC-DC-12-3010 PER FWR#750 REV. 1; ADDED: 1" VALVE, RED. INSERT, PLUG # ITEM 13-15 ON B/M. REVISED; B/M TO SUIT; ADDED: SUPPORT MARK NOS. # SUPERSEDES HGR. 130. # 2-GNSW-124 SH. NO. 2	NO FIELD ACTION REQ'D

SUPPORT MARK NOS.  
2-GNSW-R898  
2-GNSW-R899

RO.#	PIECE MARK
	2-NSW-124-4
	-5
	-8
SITE FAB. PIECE MARK	
	2-NSW-124-L1
	-L2
	-L3
	-L4
	-L5

D-33B

2NSW-124 (sheet 2 of 2)  
Lower Containment Ventilation  
Unit 4 Return Line

DESIGN SPEC. DCCPM 102QCS				FITTINGS				TESTING				ADDITIONAL			
HANGER SEISMIC CLASS II				A-105 A-234 A-182				M.D.T. N/A							
TEST REQUIREMENTS N/A				A-403 A-181				PRESSURE TEST							
MATERIAL CLASS A-21 SPEC 104								MED. PRESS. DURATION							

POUR/ZONE No. 205		FLOW DIAGRAM 2-5114A	
REQUIRED COMPLETION DATE		Q.S.L. 01	
FABRICATED BY TUBECO		WELD PROCEDURE SEE NOTE 2	
NPS DESIGNS INC. NEW YORK, N.Y.		LIVSEY & COMPANY, INC. INDIANA & MICHIGAN ELECTRIC CO. DONALD C. COOK NUCLEAR PLANT	
FABRICATOR NOTE: FABRICATION MUST CONFORM TO LATEST A.E.P. ARRGT. DWGS.		CONTAIN. VICINITY	
		DWG. NO. 2-NSW-124	
		REV. 3	
		REF. DWG. 2-5427A	