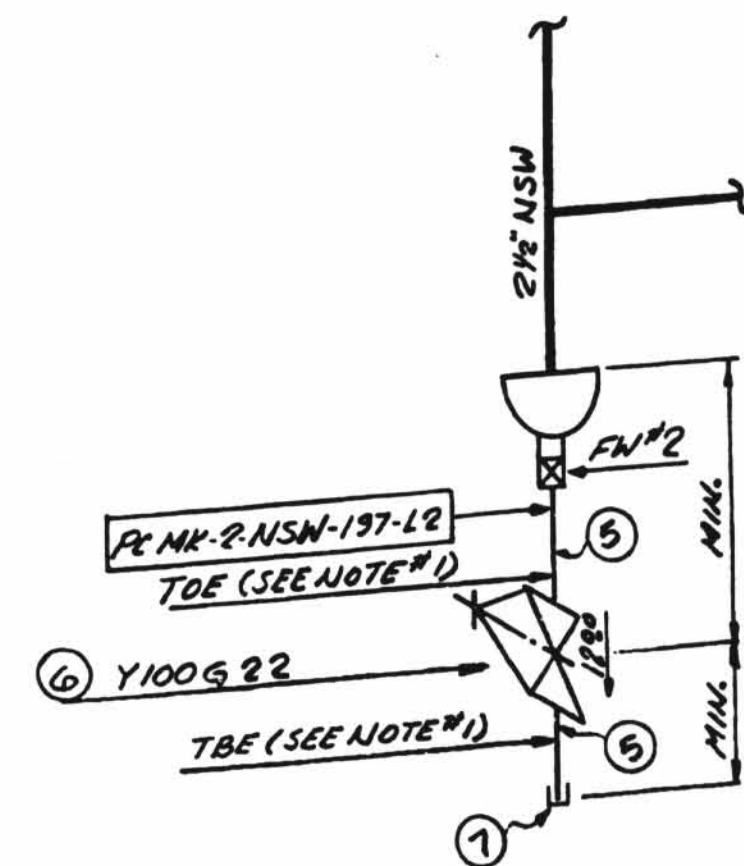
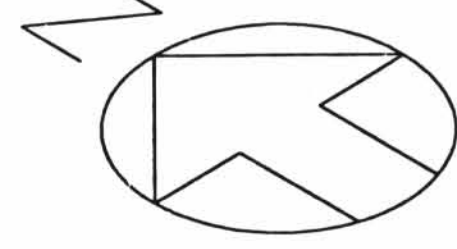


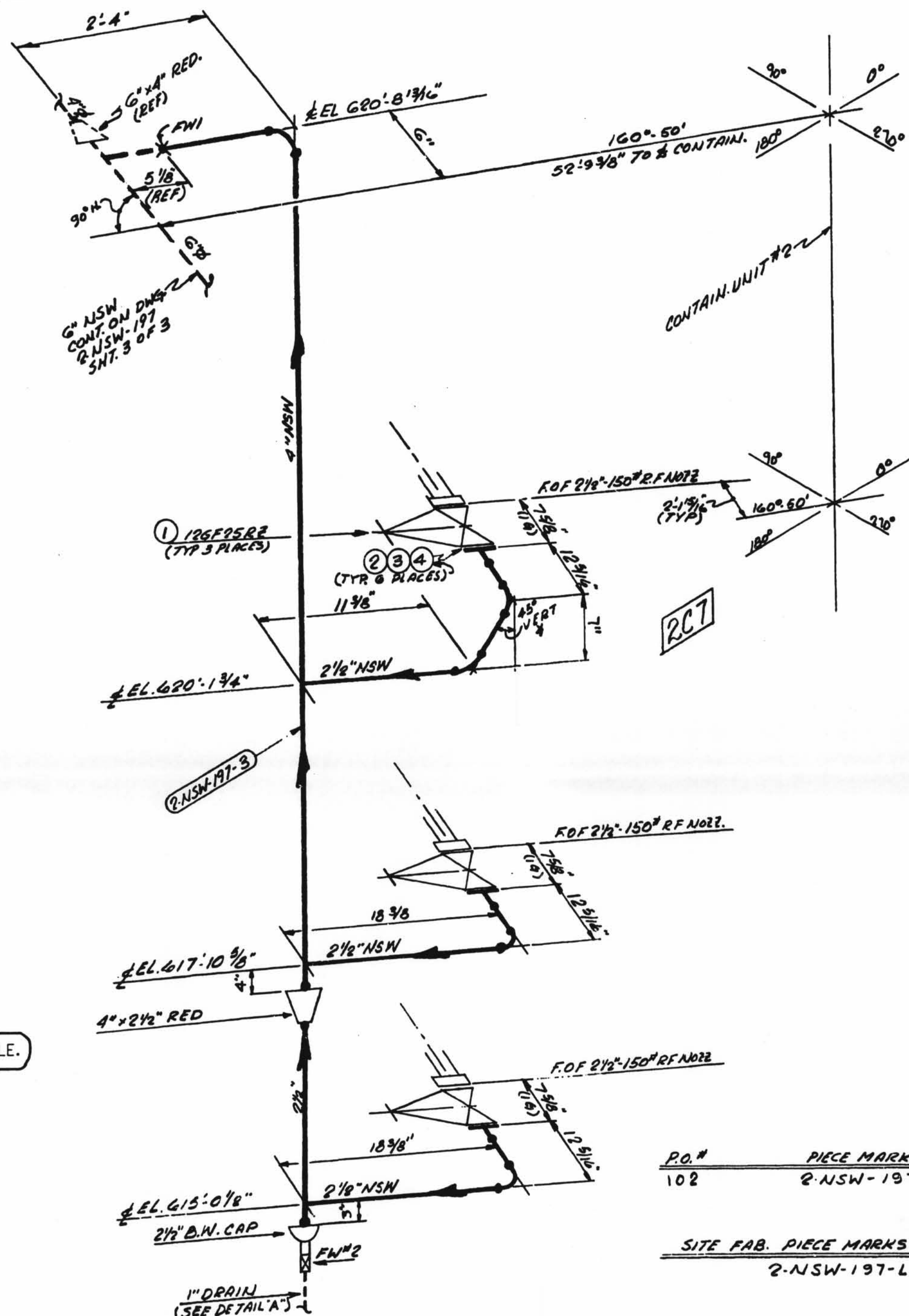
TOTAL FW 2



DETAIL "A"

NOTES:

1. USE CRANE 495 COMPOUND OR GRINNELL 1698 ON ALL THRD. CONNS.
2. USE OF 5/8" φ × 3 1/2" LG. A-307 GR. B BOLT IS ACCEPTABLE.



MATERIAL					
QSL	ITEM	QTY.	SIZE	DESCRIPTION	TAG No. OR ASTM MATL.
01	1	3	2 1/2"	125° C.I. FLG'D. GATE VALVE	126F85R2
	2	6	2 1/2"	150° COMPRESSED ASBESTOS RUBBER BONDED FULL FACE GASKET 1/2" THK.	
	3	24	3/8"	3" LG. HEX. HD. MACH. BOLTS. (SEE NOTE 2)	A-307, GR. B
	4	24	3/8"	HEAVY HEX NUTS CLASS 2 TOL	" "
	5	1	1"	PIPE (SCH. 80) SMLS C.S.	A-106, GR. B
	6	1	1"	150° THRD. GATE W. BRASS	Y100G 22
	7	1	1"	3000° C.S. THRD. CAP	A-181 GR. B

SIZE	QUAN.	FW
4"	5'	1
2 1/2"	11'	-
1"	1'	1

MATERIAL SPEC. IDCCPM102QCS	W.P. = WORKING POINT	B.B.E. = BEVEL BOTH ENDS	FW = FIELD WELD	SB = FIELD WELD
HANGER SEISMIC CLASS II	T.O.E. = TREAD ONE END	P.B.E. = PLAIN BOTH ENDS	H = HORIZONTAL	AO = AUTOMATIC SHOP WELD
TEST REQUIREMENTS N/A	T.B.E. = TREAD BOTH ENDS	P.B.E. = PLAIN BOTH ENDS	V = VERTICAL	MO = MANUAL SHOP WELD
MATERIAL CLASS A-21 SPEC. 104	B.S.E. = BEVEL ONE END	S.S.E. = SHAPE ONE END	SW = SHOP WELD	VS = VERIFY DIMENSION IN FIELD
PIPE	T.O.P. = TOP OF PIPE ELEV.	B.O.P. = BOTTOM OF PIPE ELEV.	FSW = FIELD SHOP WELD	
SA-53 SA-106 SA-316 SA-312	O.S.L. = MATERIAL QUALITY REQUIREMENTS			
GR. B				
SA-105 SA-234 SA-182				
STD. XY XX1 10 20 30 40 60 80 100 120 140 160				
SMLS. WOOD.				
FOR AS INSTALLED MATERIAL - SEE B.O.M. ABOVE				

P.O.# 102
PIECE MARKS 2-NSW-197-3
SITE FAB. PIECE MARKS 2-NSW-197-L2

D-13B

2-NSW-197 (Sheet 2 of 3)
Lower Containment Ventilation
Unit 2 Return Line

1 09/07/99
THIS DRAWING HAS BEEN CONVERTED FROM A MANUAL FORMAT TO THE IGS-SCANNED DRAWING FORMAT AND SUPERSEDES ALL PREVIOUS REVISIONS.
ADDED: NOTE FOR ITEM 3 PER RFC 12-2769, AB-D02575, DCDR 10-10-1003
GNL/RK/99
NO FIELD ACTION REQ'D.

REV.	DATE	DESCRIPTION	FIELD STATUS
		POUR/ZONE No. 2C7 FLOW DIAGRAM 1-2-5114A	
			Q.S.L. 01
REFER TO ORIGINAL ISSUE MICROFILM FOR SIGNATURES		DWG. No. 2-NSW-197	CONTAINMENT BLDG #2
		SH 2	REV 1
		AEP AMERICAN ELECTRIC POWER	AEP SERVICE CORP. 1 RIVERSIDE PLAZA COLUMBUS, OH 43216