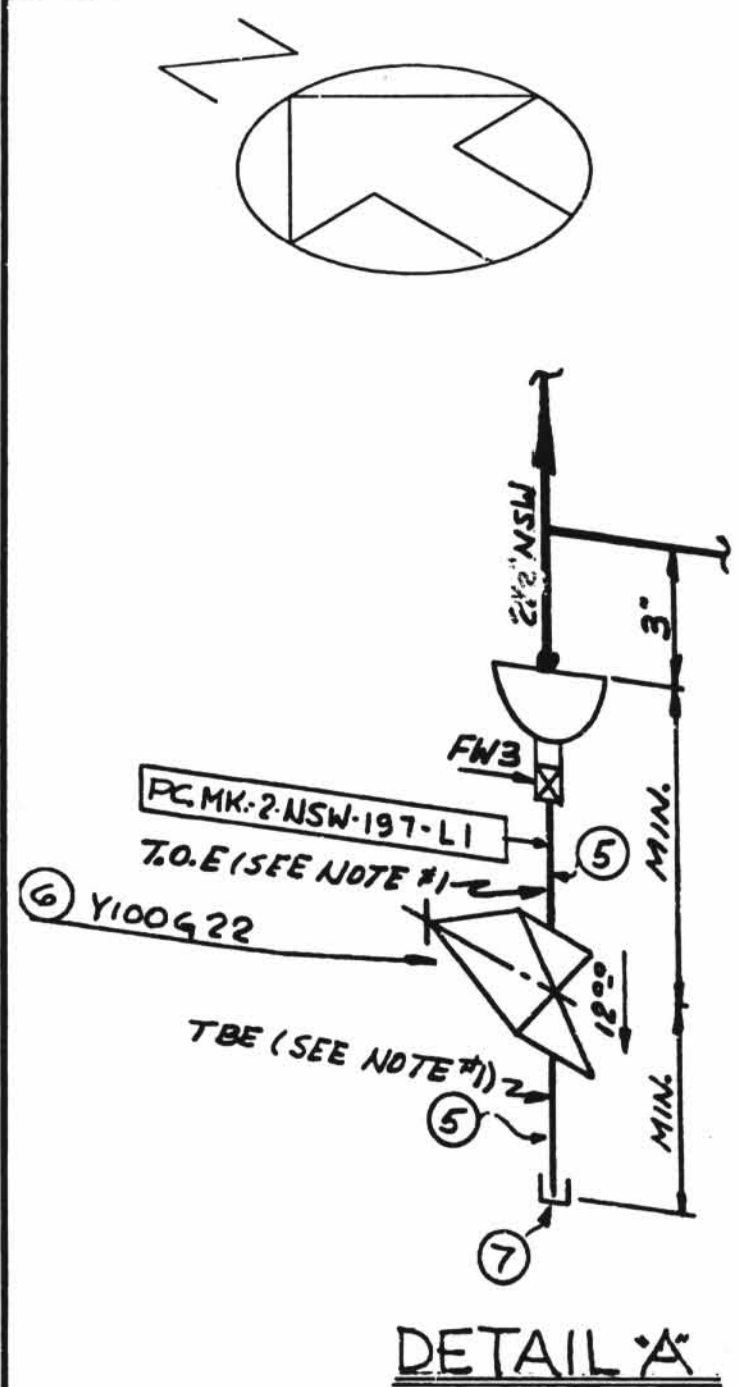
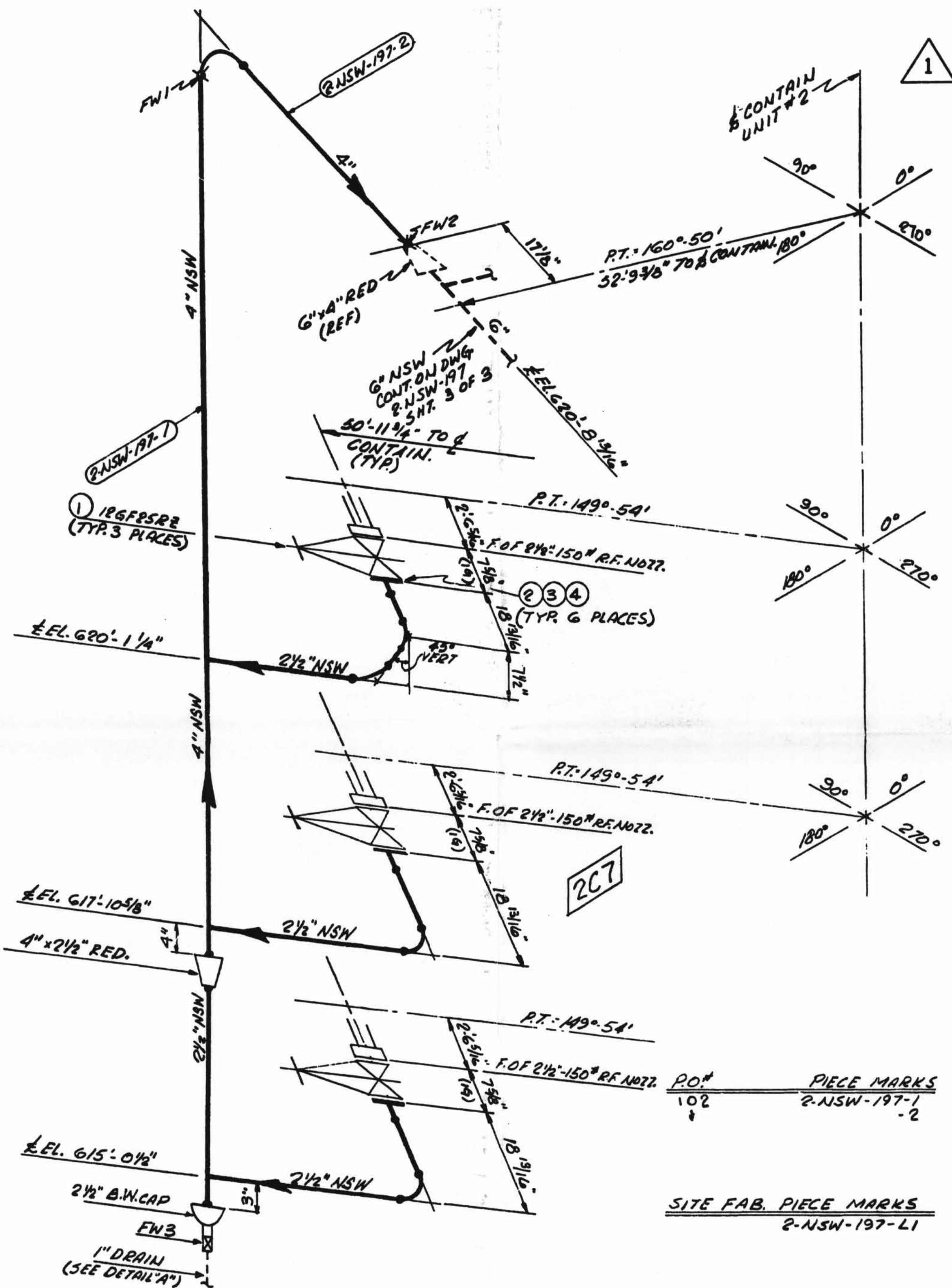


TOTAL
FW
3



- NOTES:**
- USE CRANE 495A COMPOUND OR GRINNELL 169B ON ALL THRD. CONNS.
 - USE OF 5/8" φ x 3 1/2" LG. A-307 GR. B BOLT IS ACCEPTABLE.



MATERIAL						
QSL	ITEM	QTY.	SIZE	DESCRIPTION	TAG No. OR ASTM MATL.	
01	1	3	2 1/2"	125" C.I. THRD. GATE VA.	126F25A2	
	2	6	2 1/2"	150# COMPRESSED ASBESTOS RUBBER BONDED FULL FACE GASKET 1/4" THK.		
	3	24	3"	LG. HEX. HD. MACH. BOLTS (SEE NOTE 2)	A307 GR. B	
	4	24	5/8"	HEAVY HEX NUTS CLASS 2 TOL.	" "	
	5	8	1"	PIPE (SCH 80) SMLS C.S.	A106 GR. B	
	6	1	1"	150# THRD. GATE VA. BRONZE OR BRASS	Y100 GR 2	
	7	1	1"	3000# C.S. THRD. CAP	A181 GR. 100 II	

SIZE	QUAN.	FW
4"	8'	2
2 1/2"	10'	-
1"	1'	1

MATERIAL SPEC. DCCPM1020CS	W.P. = WORKING POINT	B.B.E. = BEVEL BOTH ENDS	FW = FIELD WELD	SW = SHOP WELD
HANGER SEISMIC CLASS II	T.O.E. = THREAD ONE END	P.B.E. = PLAIN ONE END	H = HORIZONTAL	V = VERTICAL
TEST REQUIREMENTS N/A	T.B.E. = THREAD BOTH ENDS	P.B.E. = PLAIN BOTH ENDS	A = AUTOMATIC SHOP WELD	M = MANUAL SHOP WELD
MATERIAL CLASS A-21 SPEC. 104	B.O.E. = BEVEL ONE END	S.O.E. = SHAPE ONE END	SM = SHOP WELD	VF = VERIFY DIMENSION IN FIELD
PIPE GR. B	T.O.P. = TOP OF PIPE ELEV.	B.O.P. = BOTTOM OF PIPE ELEV.	FSW = FIELD SHOP WELD	
SA-53 SA-106 SA-376 SA-312	Q.S.L. = MATERIAL QUALITY REQUIREMENTS	T.L. = TRUE LENGTH		
SA-105 SA-234 SA-182				
INDIANA MICHIGAN POWER COMPANY				
DONALD C. COOK				
NUCLEAR PLANT				
BRIDGMAN MICHIGAN				

THIS DRAWING HAS BEEN CONVERTED FROM A MANUAL FORMAT TO THE IGS-SCANNED DRAWING FORMAT AND SUPERSEDES ALL PREVIOUS REVISIONS.

ADDED : NOTE FOR ITEM 3 PER RFC 12-2769, AB-D02574, DCDR 10-10-1003

GNL/KR/99

REV.	DATE	DESCRIPTION	FIELD STATUS
1	09/07/99	POUR/ZONE No. 2C7	NO FIELD ACTION REQ'D.
		FLOW DIAGRAM 1-2-5114A	
		CONTAINMENT BLDG. 2	
		Q.S.L. 01	
REFER TO ORIGINAL ISSUE MICROFILM FOR SIGNATURES		DWG. No. 2-NSW-197	REV 1
		REF. DWG. 2-5692, 2-5694A	
		AEP SERVICE CORP.	
		1 RIVERSIDE PLAZA	
		COLUMBUS, OH 43216	

D-13A

2-NSW-197 (Sheet 1 of 3)
Lower Containment Ventilation
Unit 2 Return Line

(usr11\mcc\cook\2_siso\2-5114A.dwg) (raster file)
(nsww19701.dwg)