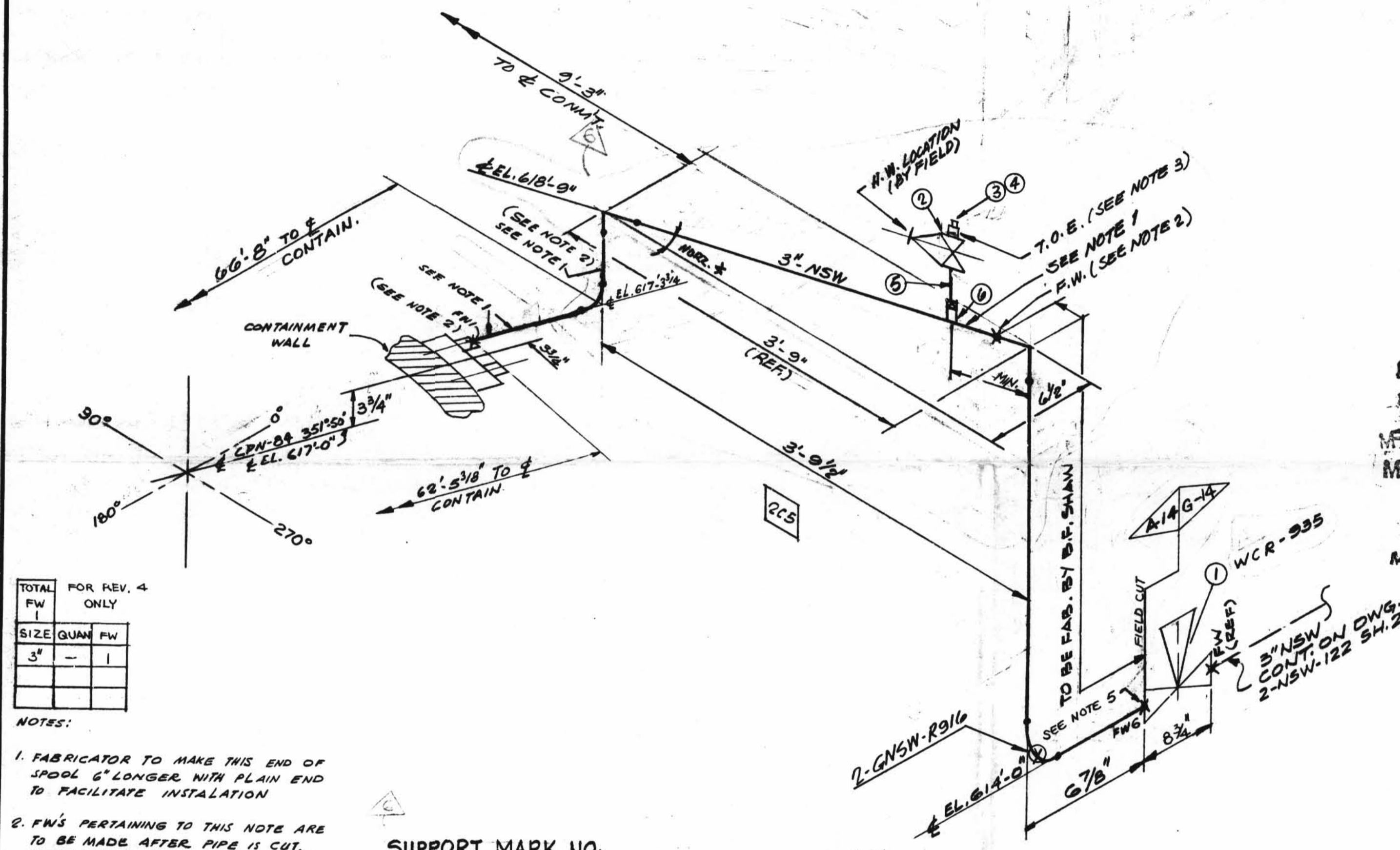
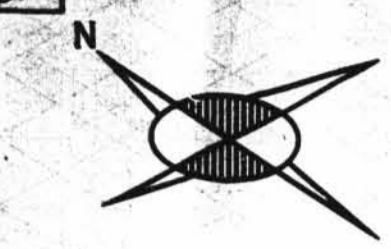


TOTAL FW



SIZE	QUAN	FW
3"	1	

NOTES:

- FABRICATOR TO MAKE THIS END OF SPOOL 6" LONGER WITH PLAIN END TO FACILITATE INSTALLATION
- FW'S PERTAINING TO THIS NOTE ARE TO BE MADE AFTER PIPE IS CUT, PRE-ALIGNED & ENDS HAVE BEEN PREPARED FOR WELDING TO SUIT AS-BUILT CPN.
- USE CRANE #25-A COMPOUND ON ALL THRD. CONN'S
- BUTTWELDS = RT - 100% TESTING  
SOCKET WELDS = PT-100% TESTING
- PROVIDE BI-METALLIC WELDS (STAINLESS STEEL - CARBON STEEL)
- REMOVE BONNET ASSEMBLY BEFORE WELDING VALVE BODY TO PIPELINE

SUPPORT MARK NO. 2-GNSW-R916

INDICATES EQUIPMENT OR PIPE SUPPORT AND SUPPORT MARK NUMBER

SUPPORT MARK NUMBERS... GENERAL LOCATION OF SUPPORTS ONLY FOR EXACT LOCATIONS SEE PIPE SUPPORT DETAIL

SIZE	QUAN	FW
3"	16	4

DESIGN SPEC.		MATERIAL CLASS		PIPE		FITTINGS		TESTING		ADDITIONAL	
DCCPM 103RCN		A-14 SPEC. 104		A-33	A-106	A-379	A-312	A-105	A-234	A-182	N.D.T.
HANGER SEISMIC CLASS I				GR. B				M.T.		P.T.	R.T.
TEST REQUIREMENTS QL-4								100%		U.T.	
MATERIAL CLASS A-14 SPEC. 104								PRESSURE TEST			
								M.T.		DURATION	

ISO SHT. NO. 2122

QSL	ITEM	QTY.	SIZE	MATERIAL DESCRIPTION	TAG NO. OR ASTM MATL.	HEAT NO.
04	1	1	3"	B.W. DIAPH. CONTROL VA SS	WCR-935	
	2	1	1"	600° C.S. SW GLOBE VA.	Y-100736	
	3	1	1"	1" SW X 3/4" THRD. 3000# REG. INSERT	A-181	
	4	1	3/4"	3000# THRD. PLUG	A-181	
	5	AS REQ'D	1"	PIPE (SCH. 80) SMLS, C.S.	A-106	
	6	1	1"	3000# HALF CPLG., SMLS	A-181	

REVISION RECORD

NO.	DATE	DR	DESCRIPTION	REMARKS
1	1/2/78	DC	REVISED BY AEP DESIGN: PER RFC-DC-12-671; ADDED; 1" VENT VALVE NR Y-100723.	ACTION REQ'D.
2	6-2-78	RH	REVISED FABRICATION RESPONSIBILITY OF SPOOL PC. 2-NSW-122-3.	
3	7/27/78	DC	AS PER RPT-TC-0312 ADDED DETAIL 'A'	NO ACTION REQ'D
4	9/11/78	DC	PER RES-DC-12-2549 ADDED SPEC. G-14, NOTES 4, 5 & 6, FIELD WELD BOX, FIELD WELD 6, REVISED ITEM NO. 1 IN D/M. 8 3/4" WAS 13 1/4"	FIELD ACTION REQ'D
5	10/24/78	JL	PER RFC-DC-12-2549 DIM. 3'-9" WAS 3'-10 1/8" DIM. 3'-9 1/8" WAS 3'-10 3/8" & ADDED DIM.	FIELD ACTION REQ'D
6	7/27/80	DC	TO REFLECT AS-FOUND CONDITIONS FOR RFC-DC-12-3010 PER FWR # 759 REV. 1; REVISED: DWG. TO INCORPORATE AS-BUILT PIPE CONFIG. ADDED: ITEM 3-G ON B/M; SUPPORT MARK NO. # 9 SUPERSEDES HGR. 190. NO. 2-GNSW-122 SH. NO. 1	NO FIELD ACTION REQ'D.

2NSW-122 (sheet 1 of 2)  
Upper Containment Ventilation  
Unit 4 Return Line

POUR/ZONE No. 2CS	FLOW DIAGRAM 2-5114A
REQUIRED COMPLETION DATE	Q.S.L. 04
FABRICATED BY TUBECO	WELD PROCEDURE
NPS DESIGNS INC. NEW YORK, N.Y.	LIVSEY & COMPANY, INC. INDIANA & MICHIGAN ELECTRIC CO. DONALD C. COOK NUCLEAR PLANT
FABRICATOR NOTE: FABRICATION MUST CONFORM TO LATEST A.E.P. ARRGT. DWGS.	DWN. SG DATE: 1/14/78 CONTAIN. VICINITY CRK LdB DATE: 7/77 DWG. NO. 2-NSW-122 SH. 1 OF 2 ISSUED REF. DWG. 2-5197A

D-31A