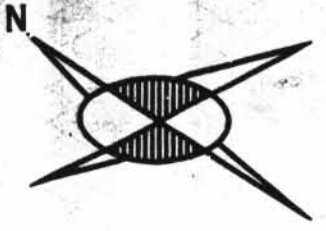
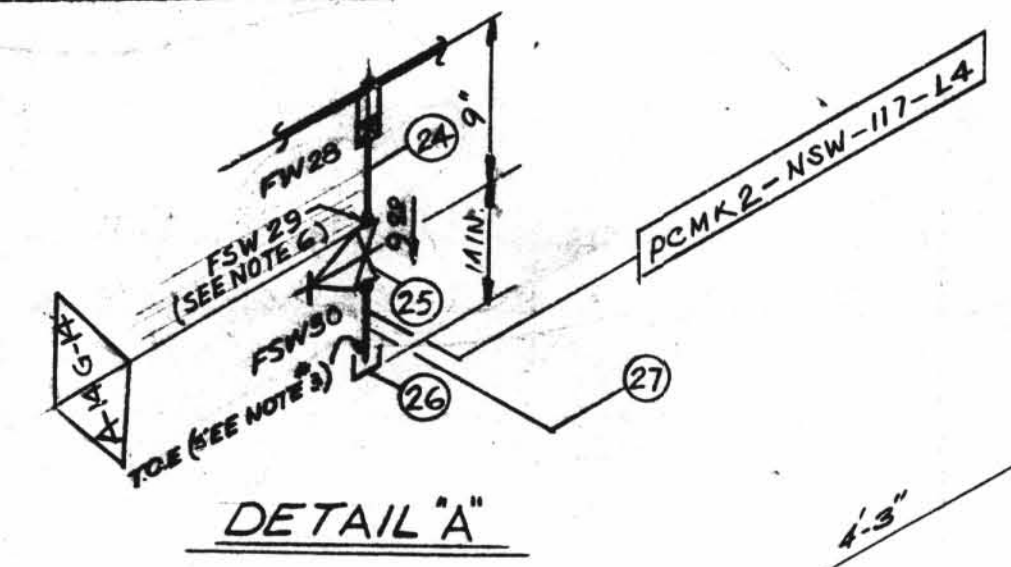


70742
FW
28



INDICATES LOCATION OF PIPE SUPPORT AND SUPPORT DETAIL NUMBER

SUPPORT MARK NUMBERS SHOWN ARE FOR GENERAL AND SEQUENTIAL LOCATION OF SUPPORTS ONLY FOR EXACT LOCATIONS SEE PIPE SUPPORT DETAIL



TOTAL FW B FOR REV. 5 ONLY

SIZE	QUAN.	FW
3	2	5
1/2	1	3

NOTES:

1. FW'S PERTAINING TO THIS NOTE ARE TO BE MADE AFTER PIPE IS CUT, PRE-ALIGNED & ENDS HAVE BEEN PREPARED FOR WELDING TO SUIT AS-BUILT CPN.
2. FABRICATOR TO MAKE THIS END OF SPOOL 6" LONGER WITH PLAIN END TO FACILITATE INSTALLATION.
3. USE CRANE 425-A COMPOUND ON ALL THRD. CONNECTION.
4. WELD PROCEDURE AS FOLLOWS:
C/S 2" & UNDER
C/S 2 1/2" & OVER
5. BUTTWELDS = RT-100% TESTING
SOCKET WELDS = PT-100% TESTING

SIZE	QUAN.	FW
3	25	2
1/2	2	13
1	1	3

A-18	DESIGN SPEC. DCCPM 103 QCN
A-21	DESIGN SPEC. DCCPM 102 QCS

DESIGN SPEC.	SEE
HANGER SEISMIC CLASS	DESIGN
TEST REQUIREMENTS	CODE
MATERIAL CLASS	STAMP
PIPE	
FITTINGS	
TESTING	
ADDITIONAL	

ISO SRT. NO. 2162

QSL	ITEM	QTY	SIZE	MATERIAL DESCRIPTION	TAG NO. OR ASTM MATL.	HEAT NO.
04	1	1	3"	B.W. DIAPH. CONTROL VA. S.S.	WCR-930	
01	2	1	3"	125" C.I. WAFER BUTTERFLY VA.	12FW08RS	
	3	3	1/2"	200" SCR'D. GLOBE VA. BRASS OR BRASS	Y050T23	
	4	2	1/2"	3000" S.W. C.S. 90° ELL.	A-181	
	5	2	1/2"	3000" S.W. PLUG C.S.	GR. 2 OR 2	
	6	1	1/2"	3000" SCR'D. CAP. C.S.		
	7	2	3"	SPRAL WOUND FIBREGLASS GASKET STYLE CG TYPE 304		
	8	6	1/2"	STUD BOLT.	A-183	
	9	16	3/8"	HEAVY HEX. NUT	A-184	
	10	2	3/8"	HEAVY HEX. HD. MACN. BOLT.	GR. 8H	
	11	2	3/8"	HEAVY HEX. NUT CL. 2 TOL.	A-181	
	12	2	1/2"	PIPE (SCH. 80) SMLS. C.S.	A-106	
	13	1	1"	BI-METAL THERM WELL	WTI-927	
04	15	2	1"	600" S.W. C.S. GLOBE VA.	Y-100T26	
01	16	1	1"	200" SCR'D. GLOBE VA. BRASS OR BRASS	Y-100T23	
04	17	AS REQ'D	1"	PIPE (SCH. 40) SMLS. C.S.		
01	18	1	1"	PIPE (SCH. 40) SMLS. C.S.		
04	20	1	3/4"	THD. PLUG C.S.		

FOR CONTINUATION OF B/M SEE BELOW

NO.	DATE	DR.	CHK.	DESCRIPTION	REMARKS
1	10/76	DR.	BR.	REVISED BY A.E.P. DESIGN: PER RFC-DC-12-671: ADDED: 3" BW CONTROL VALVE WCR-930, (2) VENTS-VALVE NR. Y-100T23, 1/2" DRAIN-VALVE NR. Y-050T23. MOVED SPEC BREAK FROM WCR-931 TO WCR-930	ACTION REQ'D.
2	12/76	DR.	BR.	REVISED PIPING AT EL. 641'-0" & EL. 618'-8"	ACTION REQ'D.
3	12/76	DR.	BR.	ADDED: WPX-931, REVISED ITEM 15, VENT PIPING. ADDED ITEM 17, 18, 19, NTI-931 WAS 927.	
4	1/77	DR.	BR.	PER RDM-NC-0162 ITEM 15 WAS Y-100T25, ADDED ITEMS 20, 21, 22	
5	1/77	DR.	BR.	PER RFC-DC-12-2549 ADDED PIPE SPEC. G-14, DIM'S, 2-NSW-117-6-7 PC-MK-L4 WELD BOX, NOTES 5, 6 & 7, FIELD WELDS 23 TO 28, FSW 29 X 30. ITEM N.B.S. 23 TO 27 TO B/M. REVISED ITEM NO. 1 & 6 IN B/M. DELETED ITEM NO. 14 FROM B/M.	FIELD ACTION REQ'D.
6	1/77	DR.	BR.	PER REC-DC-12-2549 REVISED PIPING TO CONFORM FIELD DIM'S ROTATED ACTUATOR OF VALVE WCR-930 TO BE TOWARD NORTH	FIELD ACTION REQ'D.
7	1/77	DR.	BR.	PER RFC-DC-12-2549 REVISED DIM'S: DIM'S B/M * DUE TO DRAFTING ERROR DELETED DIM. 2.2 1/4"	NO FIELD ACTION REQ'D.
8	7/77	DR.	BR.	TO REFLECT AS-FOUND CONDITIONS FOR REC-DC-12-3010 PER FWR #759 REV. 1: ADDED: DIM'S: REVISED: DIM'S. ADDED: SUPPORT MARK NOS. & SUPERSEDES HGR. ISO #2-6NSW-117	NO FIELD ACTION REQ'D.

QSL	ITEM	QTY	SIZE	MATERIAL DESCRIPTION	TAG NO. OR ASTM MATL.	HEAT NO.
04	21	1	1"	1"x1/2" THD. RED. INSERT		
	22	1	1/2"	THD. PLUG C.S.		
	23	1	3"	B.W. DIAPH. CONTROL VA. S.S.	WCR-931	
	24	AS REQ'D	1/2"	PIPE (SCH. 40S) SMLS.	A-312	
	25	1	1/2"	600" S.W. C.S. GLOBE VALVE	GR-TP-304	
	26	1	1/2"	3000" SCR'D. CAP. C.S.	A-181	
	27	AS REQ'D	1/2"	PIPE (SCH. 80) SMLS. C.S.	A-106	

POUR/ZONE No. A-15 FLOW DIAGRAM 2-514A

REQUIRED COMPLETION DATE _____ O.S.L. SEE DESIGN

FABRICATED BY TUBE CO. WELD PROCEDURE CODE STAMP

NPS DESIGNS INC. LIVESY & COMPANY, INC.

INDIANA & MICHIGAN ELECTRIC CO. DONALD C. COOK NUCLEAR PLANT

2NSW-117 Upper Containment Ventilation Unit 3 Return Line

DATE: 8/77 DWG. NO. 2NSW-117