

TOTAL FN 18



INDICATES LOCATION OF PIPE SUPPORT AND SUPPORT DETAIL NUMBER

SUPPORT MARK NUMBERS SHOWN ARE FOR GENERAL AND SEQUENTIAL LOCATION OF SUPPORTS ONLY FOR EXACT LOCATIONS SEE PIPE SUPPORT DETAIL

SITE FAB. PIECE MARK

- 2-NSW-116-L1
- L2
- L3
- L4
- L5
- L6

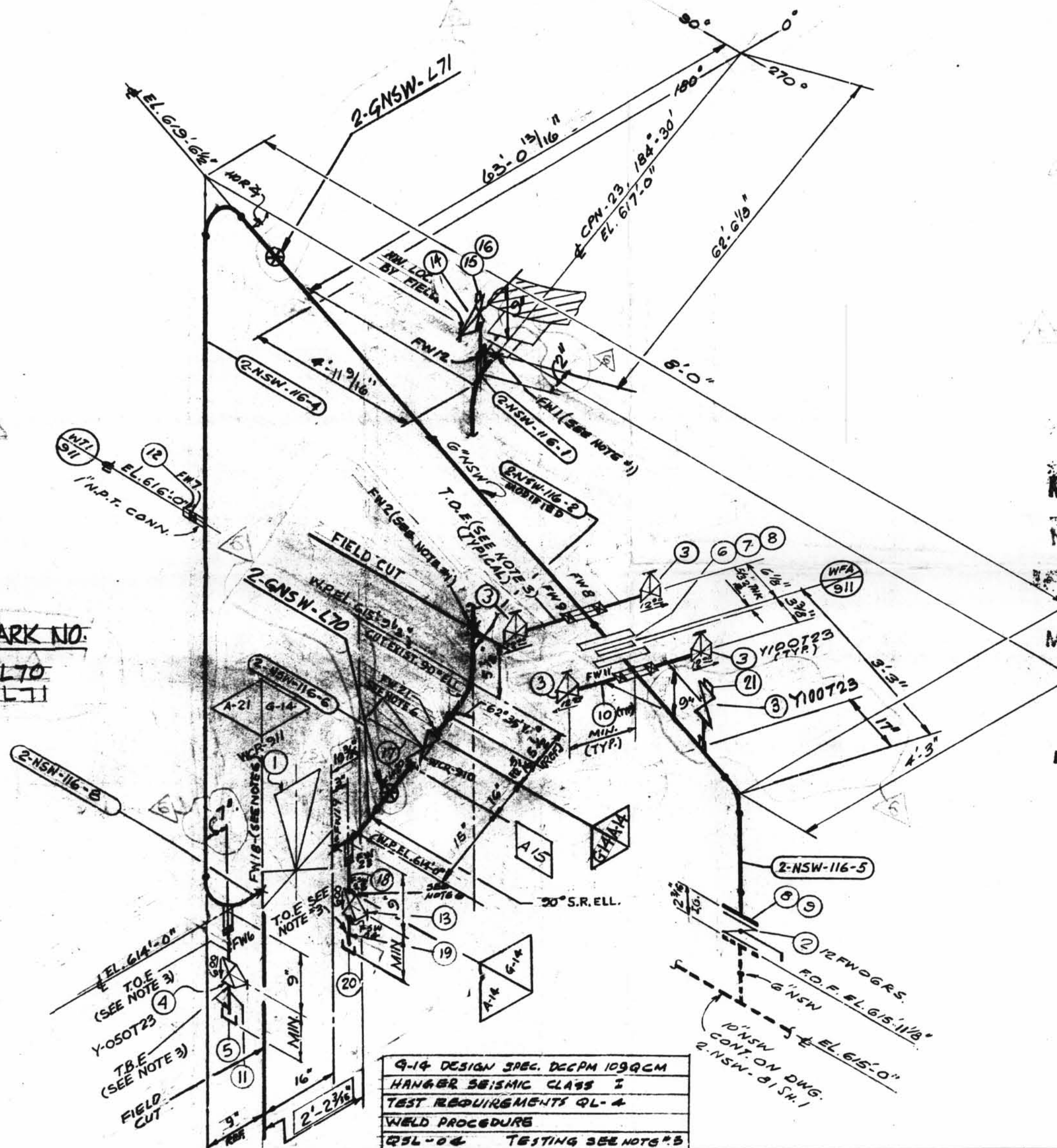
SIZE	QUAN.	FN
6"	26	6
1 1/2"	1	3

SUPPORT MARK NO. 2-GNSW-L70, 2-GNSW-L71

NOTES:

- FN'S PERTAINING TO THIS NOTE ARE TO BE MADE AFTER PIPE IS CUT, PRE-ALIGNED, & ENDS HAVE BEEN PREPARED FOR WELDING TO SUIT AS-BUILT CPN.
- FABRICATOR TO MAKE THIS END OF SPOOL 6" LONGER WITH PLAIN END TO FACILITATE INSTALLATION.
- USE CRANE 425-A COMPOUND ON ALL THRD. CONNECTIONS.
- WELD PROCEDURE AS FOLLOWS:  
C/S 2" & UNDER  
C/S 2 1/2" & OVER
- BUTTWELDS=RT-100% TESTING  
SOCKET WELDS=PT-100% TESTING
- PROVIDE BI-METALLIC WELDS (STAINLESS STEEL-CARBON STEEL)
- REMOVE BONNET ASSEMBLY BEFORE VALVE BODY TO PIPE LINE.

SIZE	QUAN.	FN
6"	26	6
1 1/2"	1	3



4-14 DESIGN SPEC. DCCPM 103 QCM HANGER SEISMIC CLASS I TEST REQUIREMENTS QL-4 WELD PROCEDURE QSL-04 TESTING SEE NOTE 3

DESIGN SPEC.	SEE
A-14	DESIGN SPEC. DCCPM 103 QCM
HANGER SEISMIC CLASS	I
TEST REQUIREMENTS	QL-4
WELD PROCEDURE	SEE NOTE 4
QSL	04 TESTING RT 100%
A-21	DESIGN SPEC. DCCPM 103 QCS
HANGER SEISMIC CLASS	II
TEST REQUIREMENTS	QL-4
WELD PROCEDURE	SEE NOTE 4
QSL	01 TESTING N/A

DESIGN SPEC.	SEE	PIPE	FITTINGS	TESTING	ADDITIONAL						
A-33	A-106	A-376	A-312	A-105	A-234	A-182	N.D.T. SEE DESIGN CODE STAMP				
		GFB		ARTP304							
STD.	XY	XYT	10	30	40	60	80	100	120	140	160
		SMLS		WLD		A-403		A-181		PRESSURE TEST	
										MED.	

ISO SHT. NO.	QSL	ITEM	QTY.	SIZE	MATERIAL DESCRIPTION	TAG NO. OR ASTM MAT'L.	HEAT NO.
2161	04	1	1	6"	B.W. DIAPH. CONTROL VA. 3.5.	WCR-911	
	01	2	1	6"	125# C.I. WAFER BUTTERFLY VA.	Y100723	
		3	5	1"	200# SCR'D. GLOBE VA.	Y100723	
		4	1	1/2"	200# SCR'D. GLOBE VA.	Y050723	
		5	2	1/2"	3000# SCR'D. CAP. C.S.	GR. I OR II	
		6	2	6"	1/8" THK FULL FACE COMP. ASBESTOS RUBBER BONDED GASKET		
		7	8	3/4"	3/4" LG. HEX. HD. MACH. BOLT.	A-307 GR. 5	
		8	16	3/4"	HEAVY HEX. NUT. CL. 2 TOL.		
		9	8	3/4"	5/2" LG. HEX. HD. MACH. BOLT		
		10	AS REQ'D	1"	PIPE (SCH. 80) SMLS. C.S.	A-106 GR. B	
		11	AS REQ'D	1/2"	PIPE (SCH. 80) SMLS. C.S.		
		12	1	1"	BI-METAL THERM. WELL	WTI-911	
		13	1	1/2"	600# SW. CS. GLOBE VA.	Y-050736	
		14	1	1"	600# SW. CS. GLOBE VA.	Y-100736	
		15	1	1"	1" SW. X 3/4" THRD. 3000# RED. INSERT		
		16	1	3/4"	THRD. PLUG. C.S.		
		17	1	6"	B.W. DIAPH. CONTROL VA. 3.5.	WCR-910	
		18	AS REQ'D	1/2"	PIPE (SCH. 80) SMLS. C.S.	A-106 GR. B	
		19	AS REQ'D	1/2"	PIPE (SCH. 80) SMLS. C.S.	A-106 GR. B	
		20	1	1/2"	3000# SCR'D CAP. C.S.	A-181 GR. I OR II	
		21	1	1"	3000# SCR'D PLUG. C.S.		

REVISION RECORD				
NO.	DATE	DR. CHK.	DESCRIPTION	REMARKS
1	10/20/76	DR. B.R.	REVISED BY AEP DESIGN: PER RFC-DC-12-671: ADDED; 6" BW. CONTROL VA. WCR-910, 1/2" DRAIN-VALVE W/ Y-050736, 1" VENT-VALVE W/ Y-100723.	ACTION REQ'D.
2	10/25/76	DVK. J.B.	REVISED PIPING BY AEP DESIGN.	ACTION REQ'D.
3	11/17/77	WMC	PER RDM-NC-0122 ITEM # 14 WAS Y-100723. ADDED ITEMS # 15 & 16 TO B/M.	
4	11/18/77	AG. DR.	PER RFC-DC-12-2549 ADDED: PIPE SPEC. G-14, DIM 5, PLM# 6, 7, 8, 16, FIELD WELD BOX, NOTES 5, 6 & 7. FIELD WELDS 17 THRU 20, FSW 24 & 25, ITEM NO'S 17 TO 20. REVISED ITEM NO 1 IN B/M, MODIFIED 2-NSW-116-2	FIELD ACTION REQ'D.
5	6/14/82	SG. EG.	PER REC DC-12-2549 BOXED DIM. INDI. FIELD INFO. DIM 9 WAS 1 1/8", 10 3/8" WAS 1 1/2", 10 3/4" WAS 9 1/2", 5 1/2" WAS 5 3/8", 62" 30V ANGLE WAS 62" V. & RELOCATED FIELD CUT. REVISED ELBOW TO 30" S.R. ELL. DELETED FSW 22, 17 AND 17C WELDS. REVISED 7, ADDED DIM. 5 3/8" WP. EL. 615'-3 1/2" WAS WREL. 615'-9 3/8".	FIELD ACTION REQ'D.
6	7/21/90	WMC	TO REFLECT AS-FOUND CONDITIONS FOR RFC-DC-12-3010 PER FWR# 150 REV.1 ADDED: 1" VENT & DIMS. & ITEM 21 OF B/M REVISED; ITEM # 3 & 14 OF B/M TO SUIT. ADDED: SUPPORT MARK NOS. & SUPERSEDES HGR. ISO. # 2-GNSW-116.	No FIELD ACTION REQ'D.

POUR/ZONE No. A-15	FLOW DIAGRAM 2-S11A
REQUIRED COMPLETION DATE TUBESO	Q.S.I. SEE DESIGN WELD PROCEDURE 5008 STAMP
FABRICATED BY TUBESO	
NPS DESIGNS INC.	LIVSEY & COMPANY, INC.
INDIANA & MICHIGAN ELECTRIC CO.	DONALD C. COOK NUCLEAR PLANT
2NSW-116	DWN: SG DATE: 6/27/72
Lower Containment Ventilation	CD: LDB DATE: 7/3/72
Unit 1 Return Line	ISSUED
	REF. DWO: 2-5427
	AUX. BLDG. DWG. NO. 2-NSW-116
	REV. 6

D-27