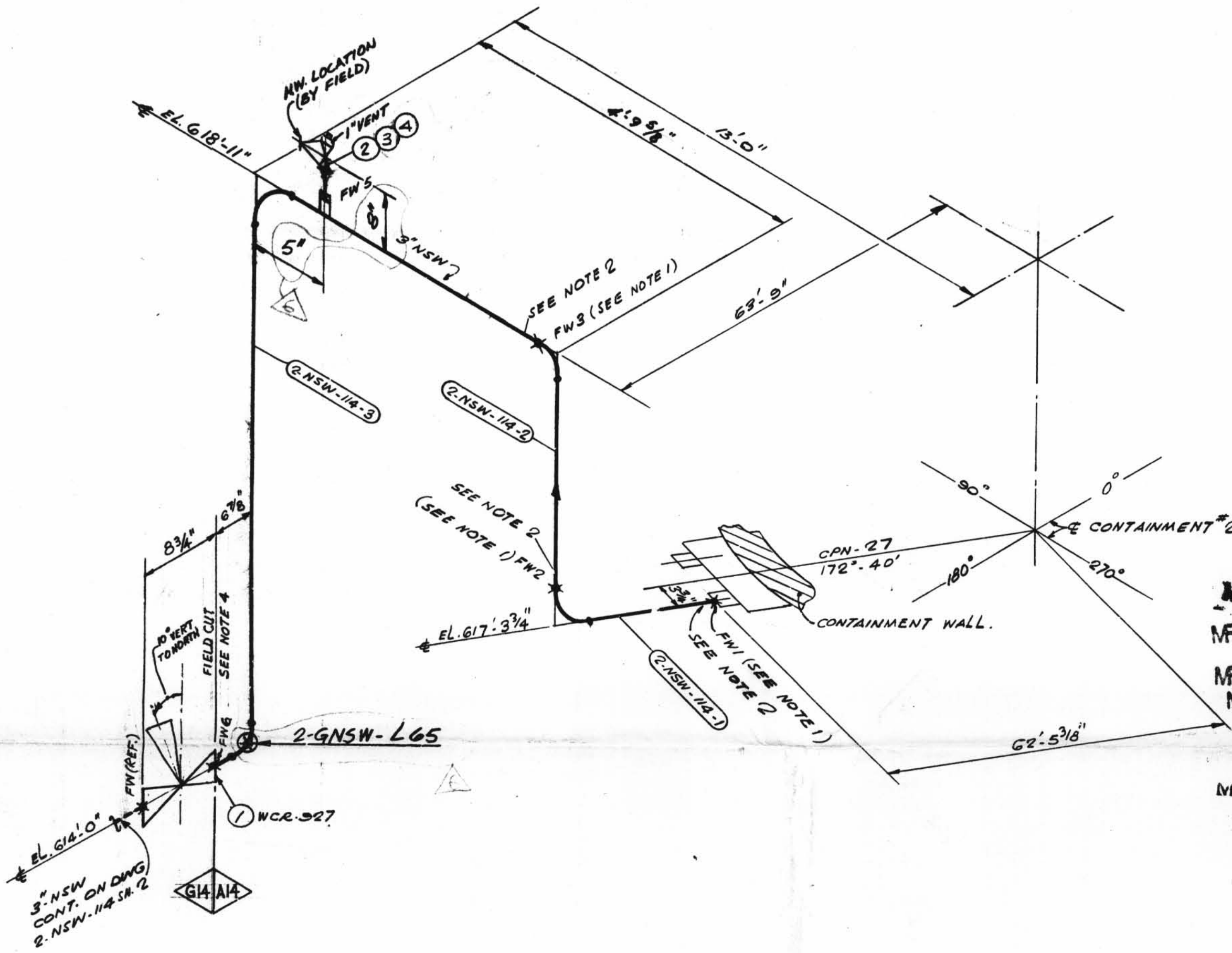
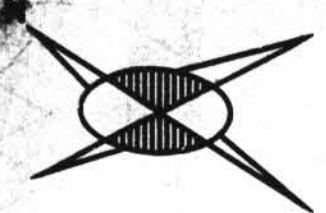


TOTAL FW 5



TOTAL FW	FOR REV. 3 ONLY
3"	1

NOTES:

- 1 FWS PERTAINING TO THIS NOTE ARE TO BE MADE AFTER PIPE IS CUT, PRE-ALIGNED & ENDS HAVE BEEN PREPARED FOR WELDING TO SUIT AS-BUILT CPN.
- 2 FABRICATOR TO MAKE THIS END OF SPOOL 6" LONGER WITH PLAIN END TO FACILITATE INSTALLATION.
- 3 USE CRANE #25-A COMPOUND ON ALL THRD. CONNS.
4. PROVIDE BI-METALLIC WELDS, (STAINLESS STEEL-CARBON STEEL)
5. REMOVE RONNET ASSEMBLY BEFORE WELDING VALVE BODY TO PIPE LINE.

P.O.#	PIECE MARK
	2-NSW-114-1
	- 2
	- 3

SUPPORT MARK NO.
2-GNSW-L65

D-25A

2NSW-114 (sheet 1 of 2)
Upper Containment Ventilation
Unit 2 Return Line

ISO SHT. NO. 2153

QSL	ITEM	QTY.	SIZE	MATERIAL DESCRIPTION	TAG No. OR ASTM MAT'L.	HEAT NO.
04	1	1	3"	S.W. DIAPH. CONTROL VALVE S.S.	WCR-927	
04	2	1	1"	600° C.S. S.W. GLOBE VA	Y-100736	
04	3	1	1" SW X 3/4"	THRD 3000# RED INSERT	A-181 64.5 OR X	
04	4	1	3/4"	3000# THRD PLUG		

REVISION RECORD

NO.	DATE	DR	CHK	DESCRIPTION	REMARKS
1	1/28/78	DR	B.R.	REVISED BY AEP DESIGN: PER RFC-DC-12-671: ADDED; 1" VENT VALVE NO Y-100723.	ACTION REQ'D.
2	2/1/78	DR	B.R.	PER RDM-MC-022 VA Y-100736 WAS Y-100723	
3	2/1/78	DR	B.R.	PER RFC-DC-12-2549, ADDED PIPE SPEC. G-14 DIM. FIELD WELD BOX, NOTES 4 & 5, FW-6. REVISED ITEM No. 1 W/B/M.	FIELD ACTION REQ'D.
4	10/14/78	DR	B.R.	PER RFC-DC-12-2549 ROTATED ACTUATOR OF VALVE WCR-927 TO 10° TOWARD NORTH.	FIELD ACTION REQ'D.
5	5/1/79	DR	B.R.	PER RFC-DC-12-2549 ADDED RED. INSERT & PLUG TO ITEM 2 & 3.	
6	7/21/80	DR	B.R.	TO REFLECT AS-FOUND CONDITIONS FOR RFC-DC-12-3010 PER FWR# 759 REV. 1 ADDED DIMS., SUPPORT MARK NO. & SUPERSEDES HGR. ISO #12-GNSW-114 SH.# 1.	ACTION REQ'D.

SIZE	QUN.	FW
3"	14	4
1"	-	1

INDICATES LOCATION OF PIPE SUPPORT AND SUPPORT DETAIL NUMBER

SUPPORT MARK NUMBERS INDICATE GENERAL AND ESSENTIAL LOCATION OF SUPPORTS ONLY FOR EXACT LOCATIONS SEE PIPE SUPPORT DETAIL

DESIGN SPEC. DCCPM 103 QCN				FITTINGS				TESTING				ADDITIONAL	
HANGER SEISMIC CLASS I				A-105 A-234 A-182 N.D.T.				M.T. P.T. R.T. U.T.					
TEST REQUIREMENTS Q.L. 4				A-403 A-181				PRESSURE TEST					
MATERIAL CLASS A-1A SPEC. 104								MED. PRESS. DURATION					

POUR/ZONE No. 1.15	FLOW DIAGRAM 2-S116A
REQUIRED COMPLETION DATE	Q.S.L. 04
FABRICATED BY TUBECO	WELD PROCEDURE
NPS DESIGNS INC. NEW YORK, N.Y.	LIVSEY & COMPANY, INC. INDIANA & MICHIGAN ELECTRIC CO. DONALD C. COOK NUCLEAR PLANT
FABRICATOR NOTE: FABRICATION MUST CONFORM TO LATEST A.E.P. ARRGT. DWGS.	DWN: JG. DATE: 9/78 CD: LdB DATE: 9/78 ISSUED REF. DWG. 2-5497
	AUXILIARY BLDG. DWG. NO. 2-NSW-114 SH. 1 OF 2 REV. 6