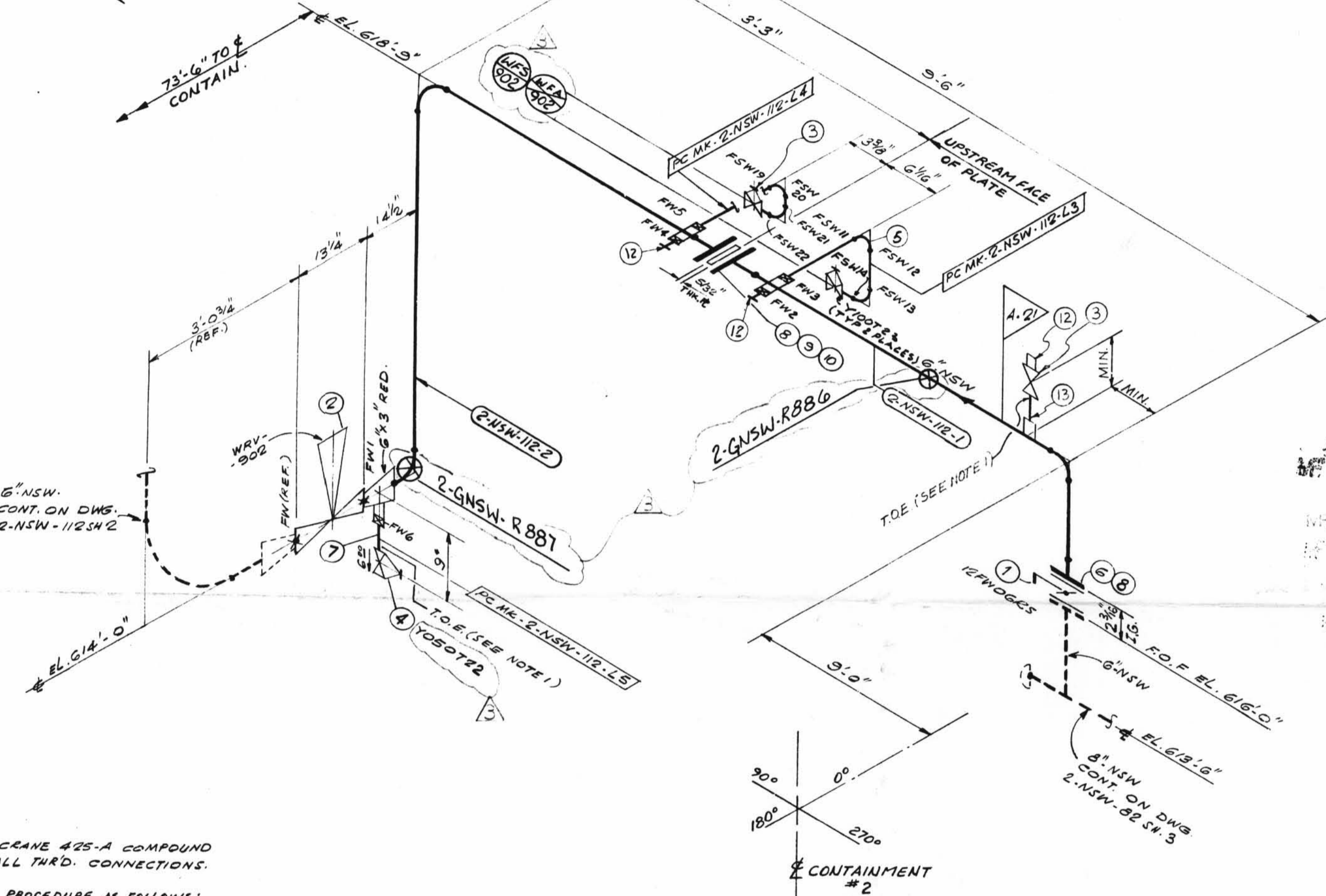
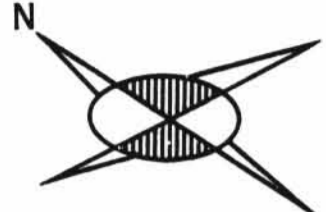


TOTAL FW 22

ISO SHT. NO. 2118



QSL	ITEM	QTY	SIZE	MATERIAL DESCRIPTION	TAG NO. OR ASTM MAT'L	HEAT NO.
01	1	1	6"	125# C.I. WAFER BUTTERFLY VA.	18FW06FS	
	2	1	3"	B.W. REGULATING VA.	WRV-902	
	3	5	1"	200# THRD. GLOBE VA. BRONZE	Y100T23	
	4	1	1/2"	150# THRD. GLOBE VA. BRONZE	Y050T22	3
	5	4	1"	3000# C.S. SW 90° ELL	A-181 GR. B	
	6	8	5/16"	5/16" LG. HEX. HD. MACH. BOLT	A-307 GR. B	
	7	AS REQD.	1/2"	PIPE (SCH 80) SMLS C.S.	A-106 GR. B	
	8	16	3/4"	HEAVY HEX. NUT CL. 2 TOL.	A-307 GR. B	
	9	8	3/4"	3/4" LG. HEX. HD. MACH. BOLT	A-307 GR. B	
	10	2	6"	1/8" THK. FULL FACE COMP. ASBESTOS RUBBER BONDED GASKET	A-106 GR. B	
	11	AS REQD.	1"	PIPE (SCH. 80) SMLS C.S.	A-106 GR. B	
	12	3	1"	3000# C/S PLUG	A-181 GR. B	
	13	AS REQD.	1"	PIPE (SCH. 80) SMLS C.S.	A-106 GR. B	

REVISION RECORD				
NO.	DATE	BY	DESCRIPTION	REMARKS
1	8/13/70	FA/LB	REVISED BY AEP. DELETED PIECES 2-NSW-112-L1 & 2-NSW-112-L2 ADDED ITEM 12 IN B/M.	
2	11-30-70	W.R.	ADDED 1" VENT & ADDED ITEM 13; REVISED ITEMS 3 & 12 OF B/M.	
3	9/1/70	DK	PER RFC-DC-12-7876 REV'D INST'S & ITEM 4 VALVE TYPE. ADDED SUPPORT DETAILS. SUPERSEDED HGR 150 2GNSW-112 SHT. ALL ABOVE TO REFLECT AS-BUILT CONDITIONS.	No FIELD ACTION REQ'D

- NOTES:
- USE CRANE 425-A COMPOUND ON ALL THRD. CONNECTIONS.
  - WELD PROCEDURE AS FOLLOWS:  
C/S 2" & UNDER - C/S 2 1/2" & OVER -

P.O.#	PIECE MARKS	SITE FAB. PC. MARKS
	2-NSW-112-1	2-NSW-112-L3
	-2	L4
		L5

D-24A

2NSW-112 (sheet 1 of 2)  
Lower Containment Ventilation  
Unit 1 Supply Line

SIZE	QUAN.	FW
6"	17	-
3"	-	1
1"	2	20
1/2"	1	1

SUPPORT MARK NUMBERS SHOWN ARE FOR GENERAL REFERENCE ONLY. FOR EXACT MARKING USE PIPE SUPPORT DETAIL.

HANGER MARK NOS

2-GNSW-R 886  
2-GNSW-R 887

INDICATED LOCATION OF PIPE SUPPORT DETAIL.

DESIGN SPEC. DCCPM 102 465	HANGER SEISMIC CLASS II	TEST REQUIREMENTS N/A	MATERIAL CLASS A-21 SPEC. 104
PIPE	FITTINGS	TESTING	ADDITIONAL
A-53 A-106 A-376 A-312	A-105 A-234 A-182	N.D.T. N/A	
STD. XY XXY 10 20 30 40 60 80 100 120 140 160	A-403 A-181	PRESSURE TEST	
SMLS WELDED		MED. PRESS. DURATION	

POUR/ZONE No. 205 FLOW DIAGRAM 2-S114A

REQUIRED COMPLETION DATE O.S.I. 01

FABRICATED BY TUBECO WELD PROCEDURE SEE NOTE 2

NPS DESIGNS INC. NEW YORK, N.Y.

LIVSEY & COMPANY, INC. INDIANA & MICHIGAN ELECTRIC CO. DONALD C. COOK NUCLEAR PLANT

FABRICATOR NOTE: FABRICATION MUST CONFORM TO LATEST A.E.P. ARRGT. DWGS.

DWN: SG DATE: 8/17/70 CONTAIN. VACINITY

CRD: LdB DATE: 9/1/70 DWG. NO. 2-NSW-112 SH. 1 of 2

ISSUED

REF. DWG. 2-5497A

REV. 3