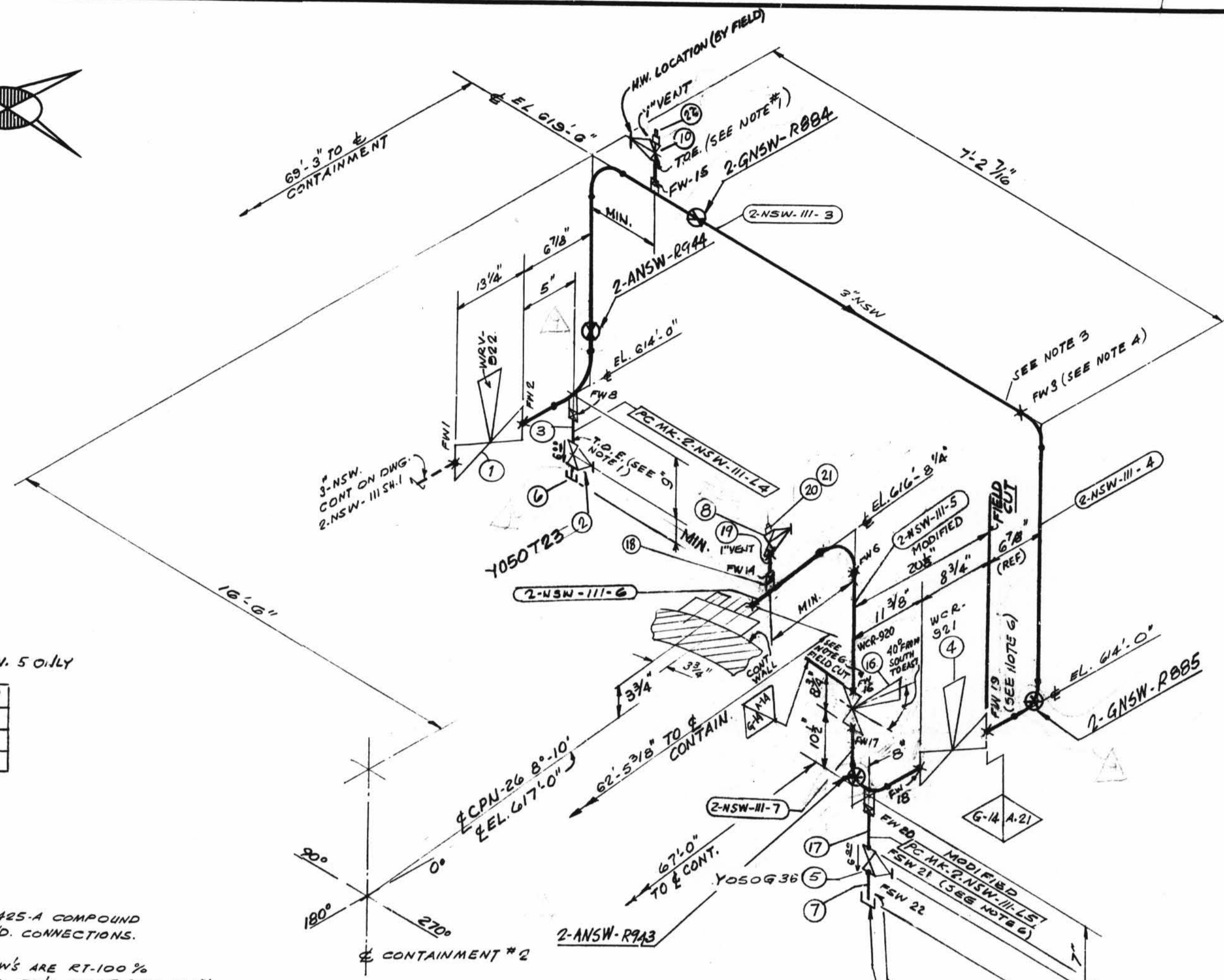
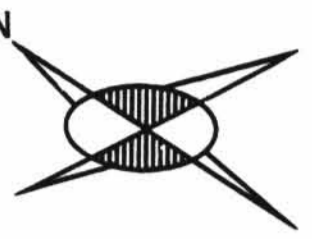


TOTAL FW 15



SIZE	QUAN.	FW
3"	4	4
1/2"	1	1

FOR REV. 5 ONLY

- NOTES:
- USE CRANE 425-A COMPOUND ON ALL THRD. CONNECTIONS.
  - BUTT WELD FW'S ARE RT-100% SOCKET WELD FW'S ARE RTORPT.-100%
  - FABRICATOR TO MAKE THIS END OF SPOOL 6" LONGER WITH PLAIN END TO FACILITATE INSTALLATION
  - FW'S PERTAINING TO THIS NOTE ARE TO BE MADE AFTER PIPE IS CUT, PRE-ALIGNED AND ENDS HAVE BEEN PREPARED FOR WELDING TO SUIT AS-BUILT CPM
  - WELD PROCEDURE AS FOLLOWS: C/S-2" UNDER-C/S-2 1/2" OVER
  - PROVIDE BI-METALLIC WELDS (STAINLESS STEEL-CARBON STEEL)
  - REMOVE BONNET ASSEMBLY BEFORE WELDING VALVE BODY TO PIPE LINE.

SIZE	QUAN.	FW
3"	27	9
1/2"	1	4
1"	-	2

PO.#	PIECE MARK
	2-NSW-111-3
	-4
	-5
	-6
	-7

SUPPORT MARK NOS.
2-GNSW-R884
" R885
2-ANSW-R943
" R944

DESIGN SPEC	SEE
HANGER SEISMIC CLASS	DESIGN
TEST REQUIREMENTS	CODE
WELD PROCEDURE	STAMP
MATERIAL CLASS	

PIPE		FITTINGS			TESTING			ADDITIONAL								
A-33	A-106	A-376	A-312	A-105	A-234	A-182	N.D.T. SEE DESIGN CODE STAMP									
GR B	GRT P304			AT.	PT.	UT.										
STC.	XY	XXY	10	20	30	40	60	80	100	120	140	160				
SMLS	WLD			A-403	A-181	PRESSURE TEST										
							MED.	PRESS.	DURATION							

QSL	ITEM	QTY.	SIZE	MATERIAL DESCRIPTION	TAG No. OR ASTM MAT'L.	HEAT NO.
	01	1	3"	B.W. REGULATING VA.	NRV-922	
	2	1	1/2"	200# THRD. GLOBE VA. BRONZE OR BRASS	Y050T23	
	3	AS REQ'D	1/2"	PIPE (SCH. 80) SMLS. C.S.	A-181 GR. B	
	04	4	1	3" B.W. DIAPH. CONTROL VA. S.S.	WCR-921	
	5	1	1/2"	600# C.S. S.W. GATE VA.	CY050G36	
	6	2	1/2"	3000# C.S. THRD. CAP	A-181 GR. B	
	7	AS REQ'D	1/2"	PIPE (SCH. 80) SMLS. C.S.	A-181 GR. B	
	8	1	1"	600# S.W. GLOBE VA. C.S.	Y-100T36	
	01	10	1	1" 200# THRD. GLOBE VA. BRONZE OR BRASS	Y-100T23	
	20	1	1"	3000# THRD. 3000# RED. INSERT	A-181 GR. B	
	21	1	3/4"	3000# THRD. PLUG	A-181 GR. B	
	22	1	1"	3000# THRD. PLUG	A-181 GR. B	
	04	16	1	3" B.W. DIAPH. CONTROL VA. S.S.	WCR-920	
	17	AS REQ'D	1/2"	PIPE SCH. 40 SMLS	A-181 GR. B	
	18	1	1"	3000 C.S. HALF CPLG.	A-181 GR. B	
	19	AS REQ'D	1"	PIPE (SCH. 80) SMLS C.S.	A-181 GR. B	

NO.	DATE	BY	CHK	DESCRIPTION	REMARKS
1	1-20-76	DR	BR	REVISED BY AEP DESIGN PER RFC-DC-12-671 REV'D; ITEM 5 Y-050G36 WAS CY-050G36. ADDED 3" CHECK VALVE CISC03A, 1" VENTS VALVE NR Y-100T23, Y-100T36	ACTION REQ'D.
2	12-30-76	WR		ADDED: PLUG TO DRAIN VALVE, ITEM 11, 6" 6 3/4" DIMEN.	W.R.
3	9/17/78	GP	LB	AS PER RFC-12-1430 DELETED VALVE TAG NO. CISC03A, ADDED VALVE TAG NO. CISC03A & ITEMS 12 THRU 15 AND REVISED RELATED PIPING	FIELD ACTION REQ'D
4	9/11/78	A.G.	AP	PER RFC DC-12-2549 REPLACED 3" CHECK VA. WCR-921 WITH DIAPH. CONTROL VA. S. WCR-920, 921, ADDED PIPE SPEC. G-14, NOTES G, F, WELD BOX, WELDS FW16782, 25, F3M 23, 24 2-NSW-111-7, ITEMS NO. 16 TO 19 TO B/M DIM'S.	FIELD ACTION REQ'D.
5	7/24/78	KA	DLF	PER RFC DC-12-2549 RELOCATED VALVE WCR-920 ADDED: DIM. DC MK 2-NSW-111-7, REF NOTE REV. WELD BOX, MODIFIED DC MK. 2-NSW-111-5, REINSTATED DC MK 2-NSW-111-5.	FIELD ACTION REQ'D.
6	7/24/78	JL	WJ	PER RFC DC-12-2549 DIM. 7-2716" WAS 7-2316" AND ADDED DIM.	NO FIELD ACTION REQ'D
7	5/1/78	KA	JM	PER RFC DC-12-2549 RELOCATED TEST CONN.	FIELD ACTION REQ'D
8	5/1/78	ME	JM	PER RFC DC-12-2549 ADDED RED. INSERT & PLUG TO ITEM 19 & B/M.	
9	7/12/89	RBB	DLB	TO REFLECT AS-FOUND CONDITIONS FOR RFC-DC-12-3010 PER FWR# 759 REV. 1, ADDED: 1" PLUG & ITEM NO. 22 ON B/M. REVISED: 1/2" PLUG TO 1/4" CAP & B/M TO SUIT. ADDED: SUPPORT MARK NOS. & SUPERSEDES H&R. 180. # 2-GNSW-111 SH. NO. 2.	NO FIELD ACTION REQ'D.

D-23B  
2NSW-111 (sheet 2 of 2)  
Upper Containment Ventilation  
Unit 1 Supply Line

POUR/ZONE No.	REQUIRED COMPLETION DATE	FLOW DIAGRAM	FABRICATED BY
2CS	TUBECO	2-511A	TUBECO

NPS DESIGNS INC. NEW YORK, N.Y.	LIVSEY & COMPANY, INC. INDIANA & MICHIGAN ELECTRIC CO. DONALD C. COOK NUCLEAR PLANT
------------------------------------	---

FABRICATOR NOTE: FABRICATION MUST CONFORM TO LATEST A.E.P. ARRG. DWGS.	DWN. SG. DATE: 3/17/89	REV. 9
---	------------------------	--------