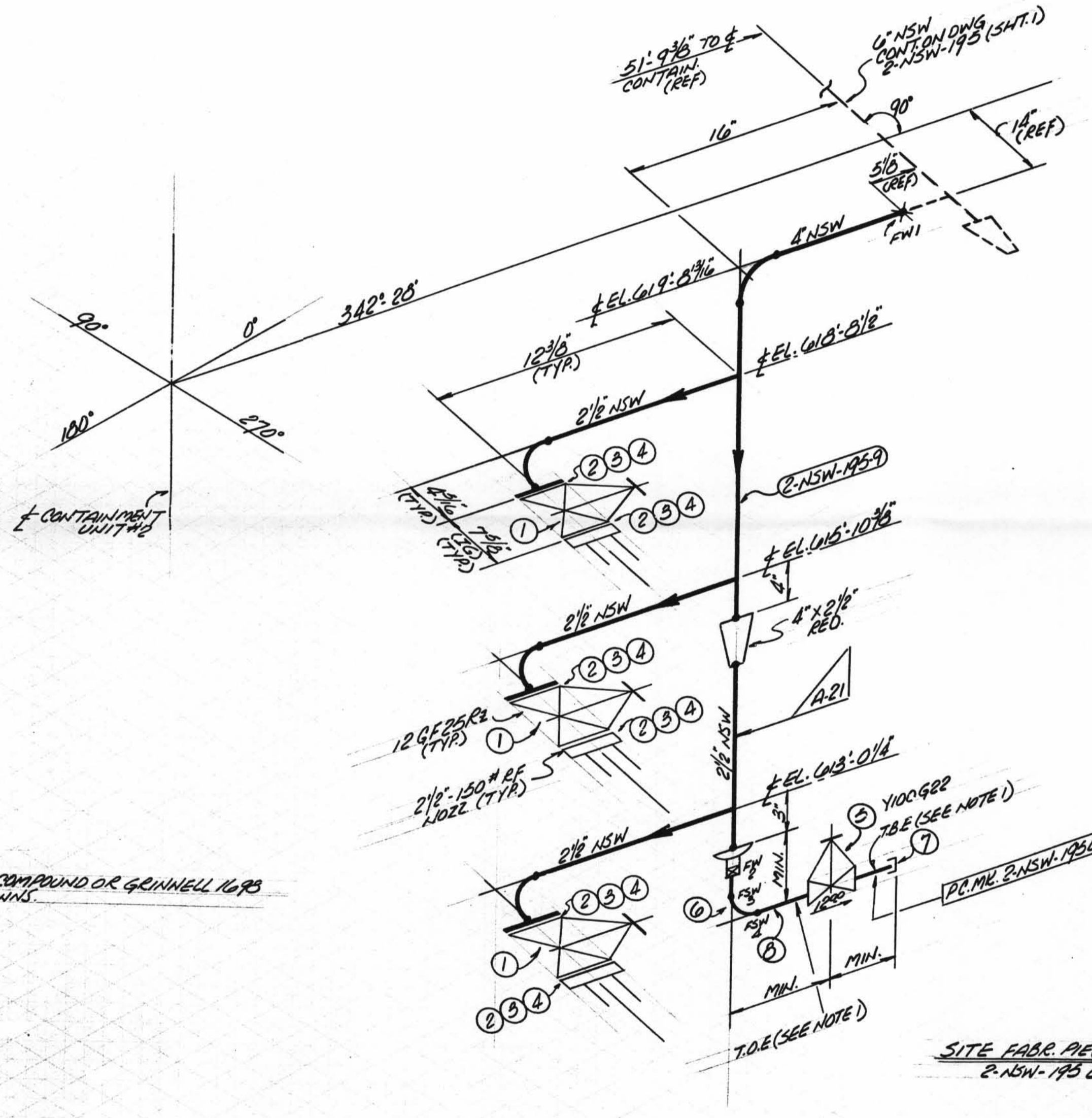
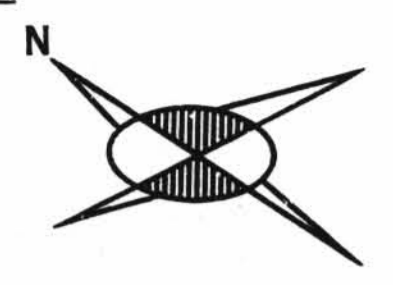


TOTAL FW 2



NOTE
1) USE CRANE A25-A COMPOUND OR GEINELL 1698 ON ALL THREADED CONNS.

SITE FABR. PIECE MARKS PD.# PIECE MARKS
2-NSW-195 C2 74 2-NSW-195 9

				ISO SHT. NO. 3447		
QSL	ITEM	QTY.	SIZE	MATERIAL DESCRIPTION	TAG No. OR ASTM MAT'L.	HEAT NO.
01	1	3	2 1/2"	125# C.I. FLG'D. GATE VA.	1R6F25R2	
	2	24	3/4"	3" LG. HEX HD. MACH. BOLTS	A-307 GR.B	
	3	24	3/8"	HEAVY HEX NUTS (CLR. TOL)		
	4	6	2 1/2"	1 1/2" THK. 150# COMP. ASB. GASKET		
	5	1	1"	150# THD. GATE VA. BRONZE OR BRASS	Y100G22	
	6	1	1"	3000# C.S. S.W. 90° ELL.	GR. FOR II	
	7	1	1"	3000# C.S. THD. CAP		
	8	3000	1"	PIPE (SCH. 80) S.M.S. C.S.	A-106 GR.B	

REVISION RECORD		
NO.	DATE	DESCRIPTION

SIZE	QUAN.	FW
4	3	1
2 1/2	7	-
1	1	1

DESIGN SPEC. OCC PM 102 GCS	W.P. - WORKING POINT	B.S.E. - BEVEL BOTH ENDS	FW - FIELD WELD
HANGER SEISMIC CLASS II	T.O.E. - THREAD ONE END	P.O.E. - PLAIN ONE END	W - WELD
TEST REQUIREMENTS N/A	T.S.E. - THREAD BOTH ENDS	P.S.E. - PLAIN BOTH ENDS	W - WELD
MATERIAL CLASS A-21 SPEC. 104	S.O.E. - SHAPE ONE END	S.O.P. - SHAPE ONE END	SW - SHOP WELD
	T.O.P. - TOP OF PIPE ELEV.	B.O.P. - BOTTOM OF PIPE ELEV.	FW - FIELD SHOP WELD
	G.S.L. - MATERIAL QUALITY REQUIREMENTS	T.L. - TRUE LENGTH	

PIPE			FITTINGS			TESTING			ADDITIONAL			
A-33	A-104	A-376	A-312	A-105	A-234	A-182	N.D.T.	M.T.	P.T.	R.T.	U.T.	
	GR.B						N/A					
STD.	XY	XXY	10	20	30	40	60	80	100	120	140	160
SMLS	W added											

POUR/ZONE No. 206 FLOW DIAGRAM 1-2-5114A
REQUIRED COMPLETION DATE O.S.L. 01
FABRICATED BY TUBULO WELD PROCEDURE

NPS DESIGNS INC. NEW YORK, N.Y.
LIVSEY & COMPANY, INC. INDIANA & MICHIGAN ELECTRIC CO. DONALD C. COOK NUCLEAR PLANT

FABRICATOR NOTE: FABRICATION MUST CONFORM TO LATEST A.E.P. ARRGT. DWGS.

DWN: AM DATE: 8-28-75 CONTAINMENT #2
CKD: WP DATE: 1-1-73 DWG. NO.
ISSUED
REF. DWG. 2-5692 2-NSW-195 (SHT. 2 OF 3)

D-118

2-NSW-195 (Sheet 2 of 3)
Lower Containment Ventilation
Unit 4 Supply Line