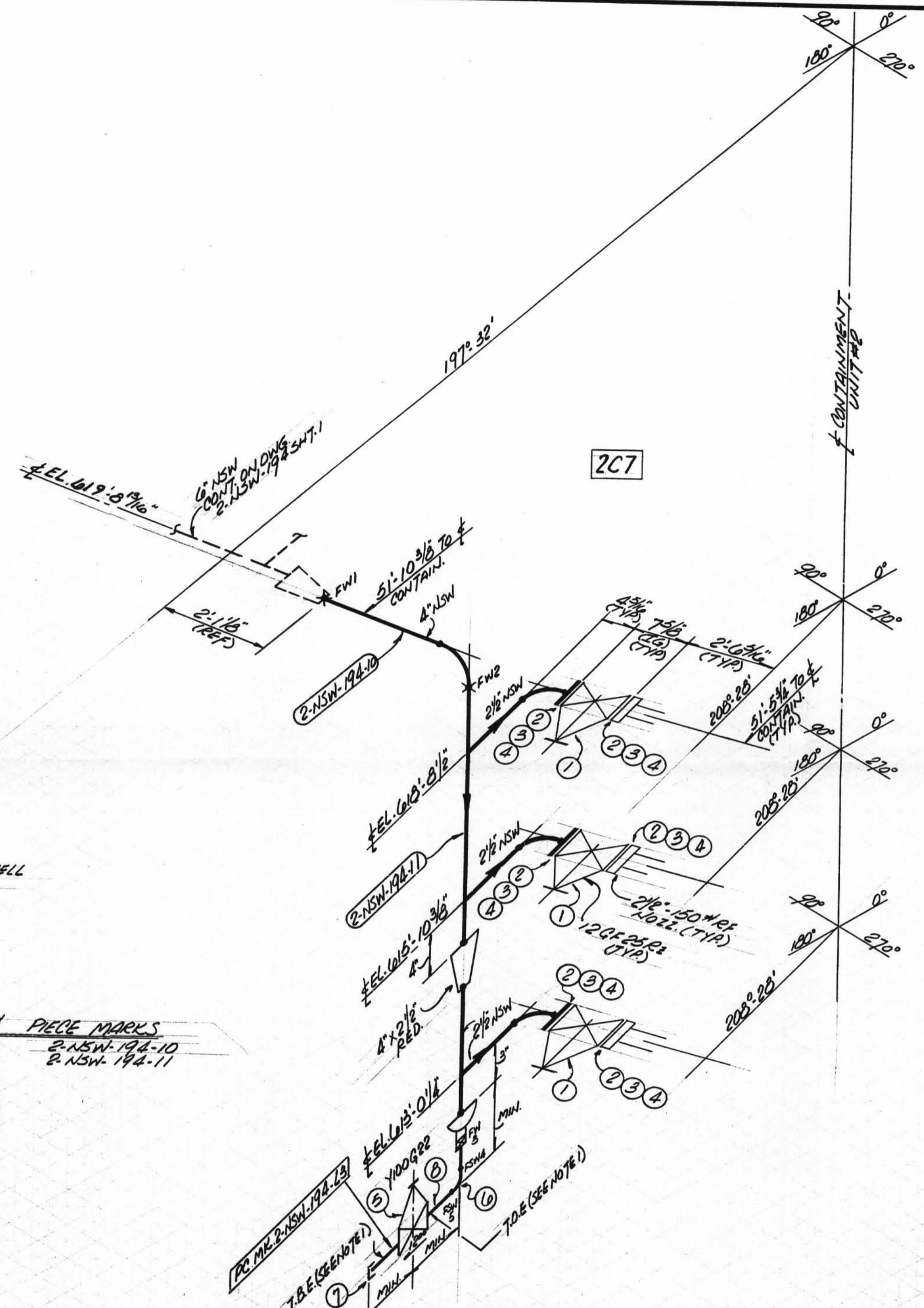
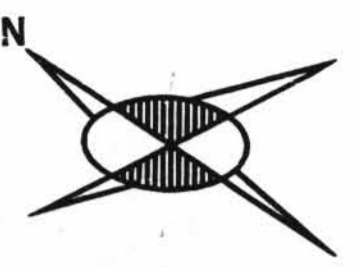


TOTAL  
FW 3



NOTE  
USE ORANGE ARS-A COMPANION OR GRINNELL  
1/2\"/>

SITE FABR. PIECE MARKS 20#  
2-NSW-194-23 90  
PIECE MARKS  
2-NSW-194-10  
2-NSW-194-11

SIZE	QTY.	WT
2 1/2"	9	2
2 1/2"	6	-
1"	1	1

ISO SHT. NO. 3445						
QSL	ITEM	QTY.	SIZE	MATERIAL DESCRIPTION	TAG NO. OR ASTM MAT'L.	HEAT NO.
01	1	3	2 1/2"	125# C.I. FLGD GATE VA.	12612322	
	2	24	3/8"	3" LG. HEX HD. MACH BOLTS	A-307GRB	
	3	24	3/8"	HEAVY HEX NUTS (CL. 2 TOL)		
	4	6	2 1/2"	1/16" THK COMP. ASB GASK. 150#		
	5	1	1"	150# THD GATE VA. BRASS	Y100622	
	6	1	1"	3000# C.S. S.W. 90° ELL.	62-181	
	7	1	1"	3000# C.S. THD CAP		
	8	1	1"	PIPE (SCH. 80) S.M.S. C.S.	A106GRB	

REVISION RECORD		
NO.	DATE	DESCRIPTION

D-10C  
2-NSW-194 (Sheet 3 of 3)  
Lower Containment Ventilation  
Unit 3 Supply Line

DESIGN SPEC. 000PM102 QCS	S.P. = WORKING POINT	B.S.E. = REVEL BOTH ENDS	FW = FIELD WELD	
HANGER SEISMIC CLASS II	T.O.E. = THERD ONE END	B.S.E. = REVEL ONE END		
TEST REQUIREMENTS N/A	T.B.E. = THERD BOTH ENDS	P.S.E. = PLAIN ONE END		
MATERIAL CLASS A-21	B.O.E. = REVEL ONE END	P.S.E. = PLAIN BOTH ENDS		
	T.O.P. = TOP OF PIPE ELEV	S.S.E. = SHAPE ONE END		
	B.O.P. = BOTTOM OF PIPE ELEV	B.W. = SHOP WELD		
	Q.S.L. = MATERIAL QUALITY REQUIREMENTS	F.W. = FIELD SHOP WELD		
	T.L. = TRUE LENGTH			

PIPE				FITTINGS			TESTING				ADDITIONAL		
A-33	A-106	A-376	A-312	A-105	A-234	A-182	N.D.T.	M.T.	P.T.	R.T.	U.T.		

POUR/ZONE No. 207  
REQUIRED COMPLETION DATE  
FABRICATED BY TUBECO

FLOW DIAGRAM 12-3112A  
Q.S.L. 01  
WELD PROCEDURE

NPS DESIGNS INC.  
NEW YORK, N.Y.

LIVSEY & COMPANY, INC.  
INDIANA & MICHIGAN ELECTRIC CO.  
DONALD C. COOK NUCLEAR PLANT

FABRICATOR NOTE:  
FABRICATION MUST  
CONFORM TO LATEST  
A.E.P. ARRG.T. DWGS.

DWN: AA DATE: 6-13 CONTAINMENT 192  
CKD: WP DATE: 6-13 DWG. NO. 2-NSW-194  
ISSUED: 2-NSW-194  
REF. DWG. 2-5622 (SHT. 3 OF 3)