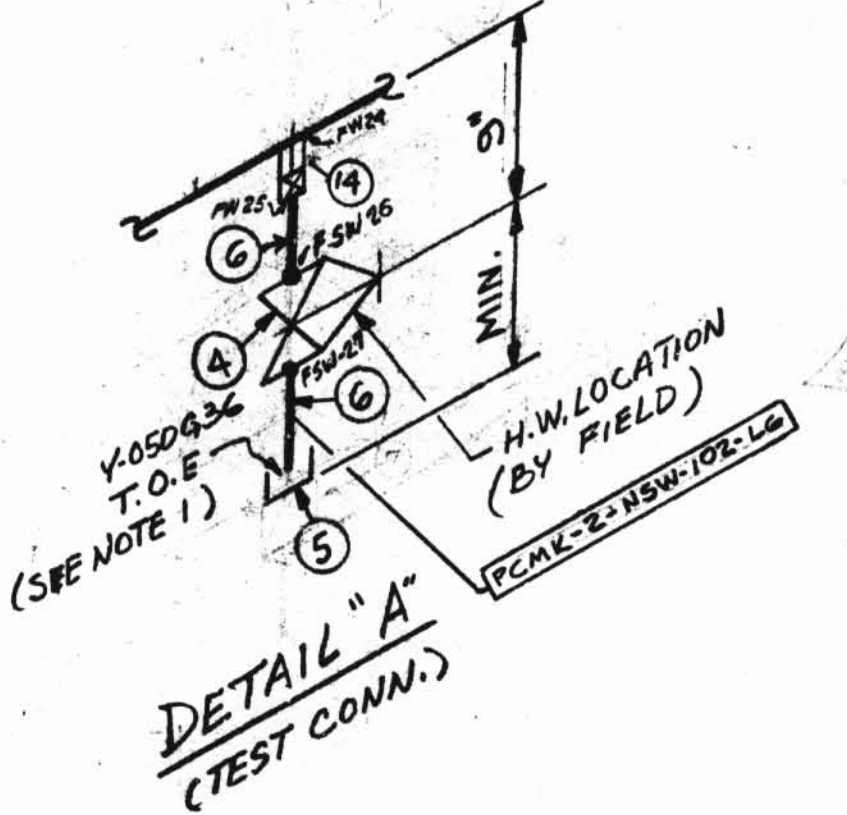


SUPPORT MARK NUMBERS SHOWN ARE FOR GENERAL AND SEQUENTIAL LOCATION OF SUPPORTS ONLY FOR EXACT LOCATIONS SEE PIPE SUPPORT DETAIL

INDICATES LOCATION OF PIPE SUPPORT AND SUPPORT DETAIL NUMBER



SIZE	QUANT.	FW
3"	24	8
1"	-	2
1/2"	4	7

SIZE	QUANT.	FW
3"	5	4
1"	1	7
1/2"	2	7

NOTES:

- USE CRANE 42E-A COMPOUND ON ALL THRD. CONNS.
- BUTT WELD FW'S ARE RT-100% SOCKET WELD FW'S ARE NT/PT-100%
- WELD PROCEDURE AS FOLLOWS:
2" & UNDER - CS-1 OR CS-G
2" & OVER - CS-1 OR CS-2.
- FABRICATOR TO MAKE THIS END OF SPOOL 6" LONGER WITH PLAIN END TO FACILITATE INSTALLATION.
- FW'S PERTAINING TO THIS NOTE ARE TO BE MADE AFTER PIPE IS PRE-ALIGNED & ENDS HAVE BEEN PREPARED FOR WELDING TO SUIT AC-BUTT OPN.
- PROVIDE BI-METALLIC WELDS (STAINLESS STEEL-CARBON STEEL)
- REMOVE BONNET ASSEMBLY BEFORE WELDING VALVE BODY TO PIPE LINE

SUPPORT MARK NOS.
2-GNSW-L51
2-GNSW-L52

DESIGN SPEC.	SEE
HANGER SEISMIC CLASS	DESIGN
TEST REQUIREMENTS	CODE
MATERIAL CLASS	STAMP
DESIGN SPEC. DCCPM 109QCN	
HANGER SEISMIC CLASS	I
TEST REQUIREMENTS	Q1-4
WELD PROCEDURE	SEE NOTE 3
QSL	Q1
DESIGN SPEC. DCCPM 102 QCS	
HANGER SEISMIC CLASS	II
TEST REQUIREMENTS	Q1
WELD PROCEDURE	SEE NOTE 3
QSL	Q1

PIPE		FITTINGS			TESTING				ADDITIONAL					
A-23	A-104	A-376	A-312	A-105	A-234	A-182	N.D.T. SEE DESIGN CODE STAMP		M.T.	P.T.	U.T.			
STD.	XY	XXY	10	20	30	40	60	90	120	140	160			
SMLS	WLD													

ISO SHT. NO. 2001

QSL	ITEM	QTY.	SIZE	MATERIAL DESCRIPTION	TAG NO. OR ASTM MATL.	HEAT NO.
01	1	1	1/2"	200# THRD GLOBE VA. BRASS	Y050723	
01	2	1	1/2"	PIPE (SCH. 80) SMLS. CS.	A-106 GR. B	
04	3	1	3"	B.W. DIAPH. CONTROL VALVE S.S.	WCR-825	
	4	2	1/2"	600# C.S. S.W. GATE VALVE	Y050636	
	5	2	1/2"	3000# C.S. THRD. CAP.	A-181 GR. 108 II	
	6	1	1/2"	PIPE (SCH. 80) SMLS. C.S.	A-106 GR. B	
	8	2	1"	600# S.W. GLOBE VA., CARB. STL.	Y-100736	
	14	1	1/2"	3000# C.S. HALF COUPLING	A-181 GR. 108 II	
	15	1	1/2"	PIPE SCH. 40 S SMLS	A-181 GR. 108 II	
	16	1	3"	B.W. DIAPH. CONTROL VA. S.S.	WCR-924	
	17	1	1"	PIPE SCH 40 S SMLS	A-181 GR. 108 II	
	18	2	3/4"	3000# THRD. PLUG, C.S.	A-181 GR. 108 II	
	19	2	1"x3/4"	3000# 1"S.W. x 3/4" THRD. RED. INSERT, C.S.	A-181 GR. 108 II	
	20	1	1/2"	3000# THRD. PLUG, C.S.		

REVISION RECORD

NO.	DATE	CHK.	DESCRIPTION	REMARKS
1	1-20-76	DR	REVISED BY AEP DESIGN PER RFC-12-671; REV'D. ITEM #4 Y050636 WAS CY-050636. ADDED; 3" CHECK VA. C15 C103A (W) VENT- VALVE NE Y-100723, 1/2" DRAIN- VALVE NE Y-050636.	ACTION REQ'D
2	1-27-77	WR	7'-0" WAS 6'-0"	
3	1-27-77	GP	AS PER RFC-12-1430 DELETED VALVE TAG NO. C15 C103A. ADDED VALVE TAG NO. C15 C103A & DIMS 3 THRU 13 AND REVISED FIELD DIMS.	FIELD ACTION REQ'D
4	1-27-77	GP	AS PER RFC-DC-12-2549 ADDED PIPE SPEC. G-14. DIM'S, PCMK 16, 17 & WELD BOX, NOTES G & 7, FIELD WELDS 18 TO 24, PSW 25, 27 TO 29. ITEM NOS 14 THRU 17 TO B/M. DELETED ITEM 7, 9, 10, TO 13, PCMK 5 & 6, FROM B/M. REV. ITEM 3 IN DIM. MODIFIED PCMK 15 & 2-NSW-102-7.	FIELD ACTION REQ'D
5	1-27-77	KA	PER RFC-DC-12-2549 ROTATED ACTUATOR OF VALVE WCR-925 TO 10" VERT. TOWARD NORTH AND ACTUATOR OF VALVE WCR-926 TO 29" VERT. DN, TO SOUTH. ADDED DIM. 8"	FIELD ACTION REQ'D
6	1-27-77	SE	PER RFC-DC-12-2549 BOXED DIMENSION INDICATES. FIELD INFO. DELETED & EL. 614'-0" ADDED PLUG TO ITEM 8 & 9"	FIELD ACTION REQ'D
7	1-27-77	WT	PER RFC-DC-12-2549 ADDED RED. INSERT & PLUG TO VALVE, ITEM 8. ITEM 6 WAS Y-100723 & ITEM 10 WAS 1"	FIELD ACTION REQ'D
8	1-27-77	EB	TO REFLECT AS-FOUND CONDITIONS FOR RFC-DC-12-3010 PER FWR # 759 REV. 1; ADDED: 1/2" PLUG DIMS. & ITEM NO. 20 ON B/M. ADDED: SUPPORT MARK NOS. & SUPERSEDES HGR. 150.# 2-GNSW-102 SH. 2	NO FIELD ACTION REQ'D

2NSW-102 (sheet 2 of 2)
Upper Containment Ventilation
Unit 2 Supply Line

POUR/ZONE No. A15	FLOW DIAGRAM 2-S114A
REQUIRED COMPLETION DATE	Q.S.L. SEE DESIGN
FABRICATED BY TUBECO	WELD PROCEDURE CODE STAMP
NPS DESIGNS INC. NEW YORK, N.Y.	LIVSEY & COMPANY, INC. INDIANA & MICHIGAN ELECTRIC CO. DONALD C. COOK NUCLEAR PLANT
FABRICATOR NOTE: FABRICATION MUST CONFORM TO LATEST A.E.P. ARRGT. DWGS.	DWN: SG DATE: 12-9-77 DWG. NO. 2-NSW-102 SH. 2 OF 2
	REV. 8