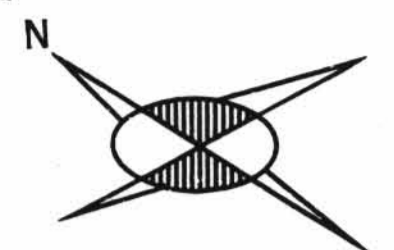
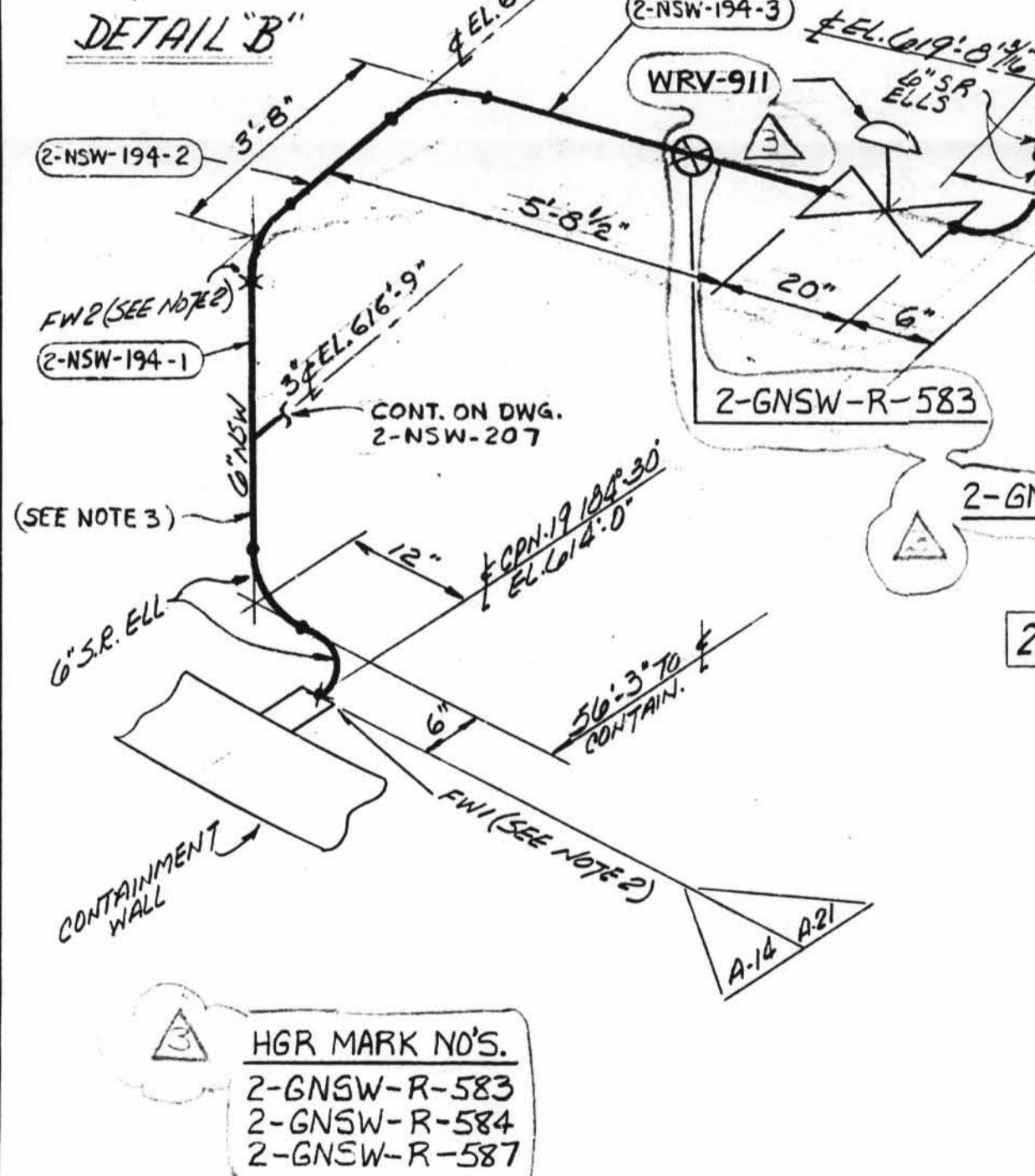
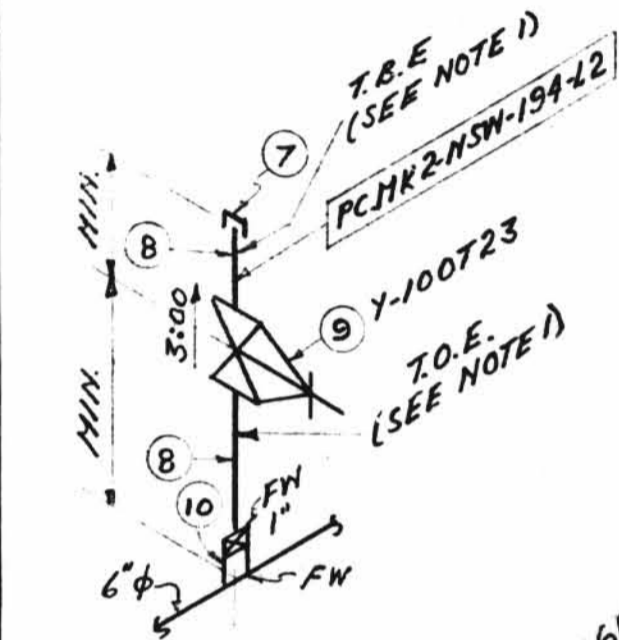


TOTAL  
FILL



- NOTES:
- 1) USE GRADE 425-A COMPOUND OR GRINNELL 1098 ON ALL THREADED CONNECTIONS.
  - 2) FIELD WELDS REFERENCED TO THIS NOTE ARE TO BE MADE AFTER PIPE IS CUT, PREALIGNED & ENDS HAVE BEEN PREPARED FOR WELDING TO SUIT AS-BUILT COND.
  - 3) SPOOL TO BE FABRICATED WITH 1" EXTRA PIPE & FLAN END TO FACILITATE INSTALLATION.

SITE FABR. P.C.E. MARKS	RD.#	PIECE MARKS
2-NSW-194-L1	90	2-NSW-194-1
2-NSW-194-L2		2-NSW-194-2
		2-NSW-194-3
		2-NSW-194-4
		2-NSW-194-5
		2-NSW-194-6
		2-NSW-194-7
		2-NSW-194-8



SIZE	QUAN.	FW
6	24	4
4	6	1
2 1/2	12	-
1	2	3

HGR MARK NO'S.  
2-GNSW-R-583  
2-GNSW-R-584  
2-GNSW-R-587

DESIGN SPEC	SEE
HANGER SEISMIC CLASS	DESIGN
TEST REQUIREMENTS	CODE
MATERIAL CLASS	STAMP
DESIGN SPEC	DCCPM 103 QCN
HANGER SEISMIC CLASS	I
TEST REQUIREMENTS QL	Q14
WELD PROCEDURE	Q14
QSL	04
TESTING	100% RT B.W.
DESIGN SPEC	DCCPM 102 QNS
HANGER SEISMIC CLASS	II
TEST REQUIREMENTS QL	N/A
WELD PROCEDURE	N/A
QSL	01
TESTING	N/A

PIPE				FITTINGS				TESTING				ADDITIONAL				
A-33	A-106	A-376	A-312	A-105	A-234	A-182	N.D.T. SEE DES. CODE STAMP	M.T.	P.T.	R.T.	U.T.					
STD.	XY	XXY	10	20	30	40	60	80	100	120	140	160				
				A-403	A-181	PRESSURE TEST										
				MED.				PRESS.				DURATION				

ISO SHT. NO. 3443

QSL	ITEM	QTY	SIZE	MATERIAL DESCRIPTION	TAG No. OR ASTM MAT'L.	HEAT NO.
01	1	3	2 1/2"	125# C.I. FLG'D. GATE VA.	12GF25R1	
	2	36	3/8"	3' LG. HEX HD. MARCH BOLTS	A-307GRB	
	3	36	3/8"	HEAVY HEX NUTS (C.I. 2 TPL)		
	4	9	2 1/2"	1/2" THK 150# COMP. ASB. GASK.		
	5	1	1"	150# THD. GATE VA. BRASS	Y100G22	
	6	1	1"	3000# Q.S. S.W. 90° ELL	A-181 GR 30K II	
	7	2	1"	3000# Q.S. THD. CAP		
	8	1	1"	PIPE (SCH. 80) SMLS. C.S.	A-106 GRB	
	9	1	1"	200# THD. BRASS OR BRONZE GLOBE VALVE	Y-100T23	
	10	1	1"	3000# 9/8" S.M. H. CPLG.	A-181 GR 30K II	

REVISION RECORD

NO.	DATE	BY	CD	DESCRIPTION	REMARKS
1	8/30/74	JC	TT	ADDED 19 5/8" DIA., DETAIL 'B'; 1" S.W. H. CPLE., ITEMS 3 & 10 IN B.M., P.C.H.R. NWS-194L2. QTY IN ITEM 7 WAS 1. PER ARRGT. DWG. 2-5692 REV. 3	FIELD ACTION REQ.
2	7/5/83	VB	TD	PER RFC-DC-12-2231 REVISED PIPING & ADDED VALVE WRV-915. PER AS BUILT INFO.	NO FIELD ACTION REQ'D.
3	12/13/87	JS	SA	TO REFLECT AS-BUILT CONDITIONS FOR RFC-DC-12-2947 REVISED VALVE NO WRV-915 TO READ WRV-911; ADDED SUPPORT MARK NBS2 SUPERSEDED HANGER 150 2-GNSW-194.	NO FIELD ACTION REQ'D.

⊗ INDICATES LOCATION OF PIPE SUPPORT AND SUPPORT DETAIL NUMBER

SUPPORT MARK NUMBERS SHOWN ARE FOR GENERAL AND SEQUENTIAL LOCATION OF SUPPORTS ONLY FOR EXACT LOCATIONS SEE PIPE SUPPORT DETAIL

D-10A

2-NSW-194 (Sheet 1 of 3)  
Lower Containment Ventilation  
Unit 3 Supply Line

POUR/ZONE No. 2C7	FLOW DIAGRAM 2-3114A
REQUIRED COMPLETION DATE	Q.S.L. SEE DES.
FABRICATED BY TUBECO	WELD PROCEDURE CODE STAMP
NPS DESIGNS INC. NEW YORK, N.Y.	LIVSEY & COMPANY, INC. INDIANA & MICHIGAN ELECTRIC CO. DONALD C. COOK NUCLEAR PLANT
FABRICATOR NOTE: FABRICATION MUST CONFORM TO LATEST A.E.P. ARRGT. DWGS.	DWN: AA DATE: 4/3 CKD: WP DATE: 10/2/73 ISSUED: 2-NSW-194 REF. DWG. 2-5692
	CONTAINMENT #2 DWG. NO. 2-NSW-194 (SHT. 1 OF 3)
	REV. 3