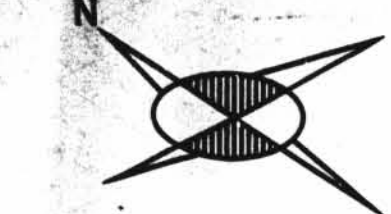


TOTAL FW 16



**HANGER MARK NOS**  
 2-GNSW-L45  
 2-GNSW-L46  
 2-GNSW-L47

⊗ INDICATES LOCATION OF PIPE SUPPORT AND SUPPORT DETAIL NUMBER

SUPPORT MARK NUMBERS SHOWN ARE FOR GENERAL AND APPROXIMATE LOCATION OF SUPPORT ONLY FOR EXACT LOCATIONS SEE PIPE SUPPORT DETAIL

| SIZE | QUANT | FW |
|------|-------|----|
| 6"   | 38    | 7  |
| 3"   | -     | 1  |
| 1"   | -     | 1  |
| 1/2" | 5     | 7  |

TOTAL 7 FOR REV. 3 ONLY

| SIZE | QUAN | FW |
|------|------|----|
| 6"   | 10   | 4  |
| 1/2" | 1    | 3  |

- NOTES:**
- USE CRANE 425-A COMPOUND ALL THRD CONNS.
  - BUTT WELD FW'S ARE RT-100% SOCKET WELD FW'S ARE MT/PT-100%
  - WELD PROCEDURE AS FOLLOWS:  
 2" & UNDER - CS-1 OR CS-6  
 2 1/2" & OVER - CS-1 OR CS-2
  - FABRICATOR TO MAKE THIS END OF SPOOL 6" LONGER WITH PLAIN END TO FACILITATE INSTALLATION.
  - FW'S PERTAINING TO THIS NOTE ARE TO BE MADE AFTER PIPE IS PRE-ALIGNED & ENDS HAVE BEEN PREPARED FOR WELDING TO SUIT AS-BUILT CON.

|                                 |                     |
|---------------------------------|---------------------|
| G-14-DESIGN SPEC. DCCPM 109 QCN |                     |
| HANGER SEISMIC CLASS I          |                     |
| TEST REQUIREMENTS QL-4          |                     |
| WELD PROCEDURE                  |                     |
| QSL-04                          | TESTING-SEE NOTE #2 |
| DESIGN SPEC. DCCPM 103 QCN      |                     |
| HANGER SEISMIC CLASS II         |                     |
| TEST REQUIREMENTS QL-4          |                     |
| WELD PROCEDURE SEE NOTE 3       |                     |
| QSL-04                          | TESTING-SEE NOTE 2  |
| A-21 DESIGN SPEC. DCCPM 109 QCN |                     |
| HANGER SEISMIC CLASS II         |                     |
| TEST REQUIREMENTS QL-1          |                     |
| WELD PROCEDURE SEE NOTE 3       |                     |
| QSL-01                          | TESTING N/A         |

| DESIGN SPEC.         | SEE    | W.P.  | TESTING                      | ADDITIONAL |
|----------------------|--------|-------|------------------------------|------------|
| HANGER SEISMIC CLASS | DESIGN |       |                              |            |
| TEST REQUIREMENTS    | CODE   |       |                              |            |
| MATERIAL CLASS       | STAMP  |       |                              |            |
| PIPE                 |        |       |                              |            |
| A-83                 | A-104  | A-376 | A-312                        |            |
| FITTINGS             |        |       |                              |            |
| A-105                | A-234  | A-182 | N.D.T. SEE DESIGN CODE STAMP |            |
| TESTING              |        |       |                              |            |
| M.T. P.T. R.T. U.T.  |        |       |                              |            |
| PRESSURE TEST        |        |       |                              |            |
| MED. PRESS. DURATION |        |       |                              |            |

ISO SHT. NO. 1933

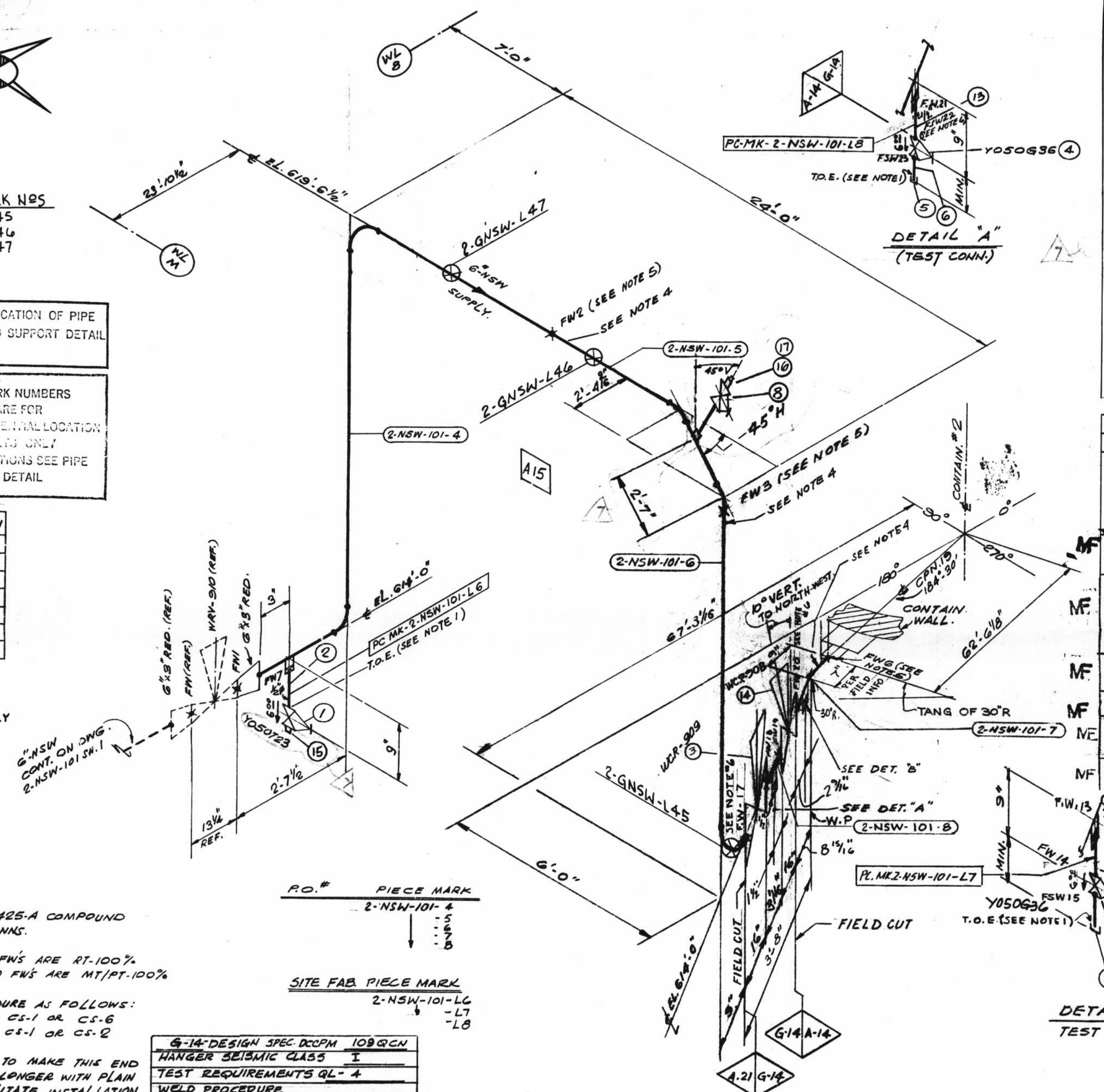
| QSL | ITEM | QTY.    | SIZE | MATERIAL DESCRIPTION                 | TAG NO. OR ASTM MAT'L. | HEAT NO. |
|-----|------|---------|------|--------------------------------------|------------------------|----------|
| 01  | 1    | 1       | 1/2" | 600# THRD GLOBE VA. BRASS OR BRONZE  | Y050723                |          |
| 04  | 2    | AS REQD | 1/2" | PIPE (SCH. 80) SMLS C.S.             | A-108 GR. B            |          |
| 04  | 3    | 1       | 6"   | B.W. DIAPH. CONTROL VALVE S.S.       | WCR-909                |          |
| 04  | 4    | 2       | 1/2" | 600# C.S. SW GATE VALVE              | Y050336                |          |
| 04  | 5    | 2       | 1/2" | 3000# C.S. THRD CAP                  | A-101 GR. 1 OR 2       |          |
| 04  | 6    | AS REQD | 1/2" | PIPE (SCH. 80) SMLS C.S.             | A-108 GR. B            |          |
| 01  | 8    | 1       | 1"   | 600# CS, SW, GLOBE VALVE             | Y-100T36               |          |
| 04  | 13   | AS REQD | 1/2" | PIPE SCH. 405 SMLS                   | A-312 GR. TP-304       |          |
| 04  | 14   | 1       | 6"   | B.W. DIAPH. CONTROL VALVE S.S.       | WCR-908                |          |
| 01  | 15   | 2       | 1/2" | 3000# PLUG THRD., C.S.               | A-101 GR. 1 OR 2       |          |
| 01  | 16   | 1       | 1"   | S.W. X 3/4" THRD, 3000# REED. INSERT |                        |          |
| 01  | 17   | 1       | 3/4" | 3000# PLUG, THRD C.S.                |                        |          |

**REVISION RECORD**

| NO. | DATE     | DR   | CHK  | DESCRIPTION  | REMARKS                |
|-----|----------|------|------|--|------------------------|
| 1   | 1/2/76   | S.A. | B.R. | REVISED BY A.E.P. DESIGN PER RFC-12-671; ADDED 6" CHECK VA. 15 C.E.O. 6A, 1/2" DRAIN VA. NO. C1-050636 1" VENT - VA. N. Y-100T23.  | ACTION REQ'D.          |
| 2   | 2/2/76   | GP   | LB   | AS PER RFC-12-1100 DELETED VALVE TAG NO. 15 C.E.O. 6A, ADDED VALVE TAG NO. C1-050636 1" VENT - VA. N. REVISED RELATED PIPING.  | FIELD ACTION REQ'D.    |
| 3   | 9/4/76   | R.F. | B.R. | PER RFC-DC-12-2549, REPLACED 6" CHECK VALVE WCR-909 WITH DIAPH. CONTROL VAIS WCR-908, 909, ADDED PIPE SPEC. A-14, WELD BOX, NOTES 6, 7, WELDS FM 17 TO 21 PER 2223 ITEMS NO. 15, 14 TO B/M. 2-N-SW-101-5 & 6 DIM. DELETED ITEMS F N. 7, 9 TO 12 FROM B/M. REV. ITEM #3 IN B/M. | FIELD ACTION REQUIRED  |
| 4   | 10/14/76 | K.A. | LB   | PER RFC-DC-12-2549 ROTATED ACTUATOR OF VALVE WCR-908 TO 10° VERT TOWARD NORTH - WEST, REVISED DIM. S.  | FIELD ACTION REQ'D.    |
| 5   | 11/1/76  | DE   | LB   | PER RFC-DC-12-2549, BOXED DIM. INDICATES FIELD INFO. 6.7" DIM. WAS 7 3/4" BY FIELD.  | NO ACTION REQ'D.       |
| 6   | 8/1/76   | D.K. | LB   | PER RFC-DC-12-2876, REV'D ITEM 8, TYPE OF VALVE. ADDED SUPPORT DETAILS SUPERSEDED HGR 150 2-GNSW-101 SHT. 2. ALL ABOVE TO REFLECT AS-BUILT CONDITIONS.   | NO FIELD ACTION REQ'D. |
| 7   | 7/1/76   | EBB  | LB   | TO REFLECT AS-FOUND CONDITIONS FOR RFC-DC-12-3010 PER FWR #750 REV. 1; ADDED PLUGS, REVISED LOCATION OF 1" VENT & B/M TO SUIT.   | NO FIELD ACTION REQ'D. |

2NSW-101 (sheet 2 of 2)  
 Lower Containment Ventilation  
 Unit 3 Supply Line

|  |   |
|--|---|
| POUR/ZONE No. A15  | FLOW DIAGRAM 2-5114A  |
| REQUIRED COMPLETION DATE   | Q.S.L. SEE DESIGN   |
| FABRICATED BY TUBECO   | WELD PROCEDURE CODE STAMP   |
| NPS DESIGNS INC.<br>NEW YORK, N.Y.   | LIVSEY & COMPANY, INC.<br>INDIANA & MICHIGAN ELECTRIC CO.<br>DONALD C. COOK NUCLEAR PLANT |
| FABRICATOR NOTE:<br>FABRICATION MUST CONFORM TO LATEST A.E.P. ARRGT. DWGS. | DWN: SG DATE: 8-77<br>CKD: GN DATE: 1-6-72<br>ISSUED<br>REF. DWG. 2-5497                  |



DETAIL 'A'  
 (TEST CONN.)

DETAIL 'B'  
 TEST CONN.

**PIECE MARK**

|             |   |
|-------------|---|
| 2-NSW-101-4 | 5 |
|             | 6 |
|             | 7 |
|             | 8 |

**SITE FAB PIECE MARK**

|              |    |
|--------------|----|
| 2-NSW-101-L6 | L7 |
|              | L8 |