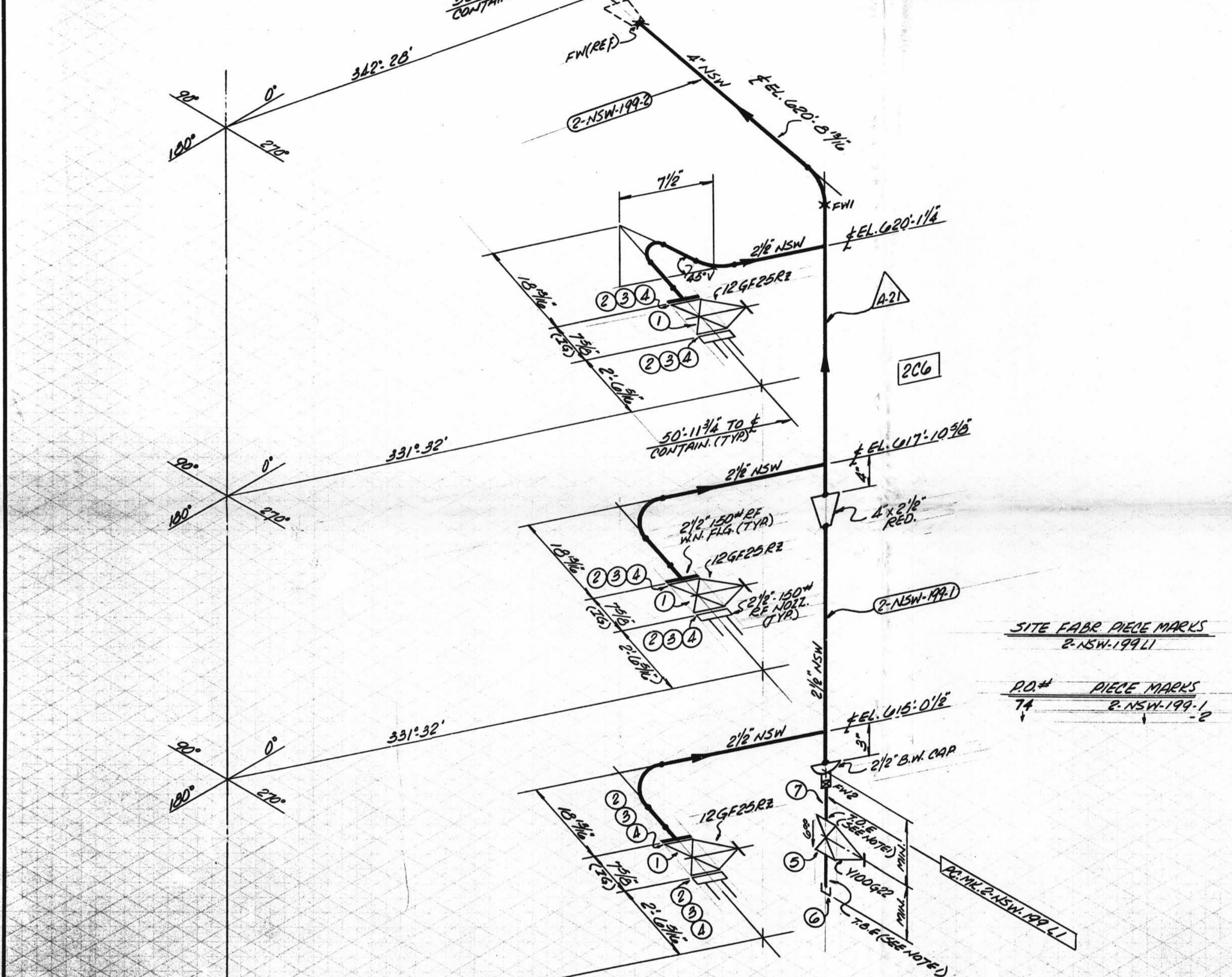
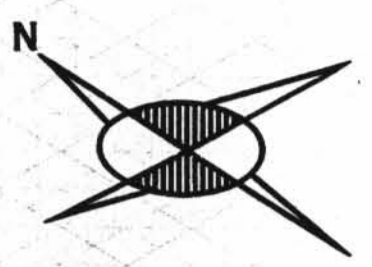


TOTAL
FW 2



ISO SHT. NO. 3458

QSL	ITEM	QTY	SIZE	MATERIAL DESCRIPTION	TAG No. OR ASTM MATL.	HEAT NO.
01	1	3	2 1/2"	125# C.I. FLG. GATE VA.	12GF25R2	
	2	24	3/16"	5/16" HEX. HD. MACHINE BOLTS	A307GRB	
	3	24	3/16"	HEAVY HEX. NUTS (CLE. TOL)		
	4	6	2 1/2"	1/4" THK. 150# COMP. ASB. GASKET		
	5	1	1"	150# THD. GATE VA. BRASS	Y100G22	
	6	1	1"	3000# C.S. THD. CAP	62 FOR II	
	7	25	1"	PIPE (SCH40) SIMS. C.S.	A106 GRB	

REVISION RECORD

NO.	DATE	DESCRIPTION

SITE FABR. PIECE MARKS
2-NSW-199-1

RO# PIECE MARKS
74 2-NSW-199-2

D-15A

2-NSW-199 (Sheet 1 of 3)
Lower Containment Ventilation
Unit 4 Return Line

STD.	XY	XXY	10	20	30	40	60	80	100	120	140	160
4	3	1										
2 1/2	10											
1	1	1										

DESIGN SPEC.			FITTINGS			TESTING		
OCCUPY 102 GCS			A-105 A-234 A-182			N.D.T. NIA		
HANGER SEISMIC CLASS II			A-403 A-181			PRESSURE TEST		
TEST REQUIREMENTS NIA						MED. PRESS. DURATION		
MATERIAL CLASS A-21								

POUR/ZONE No. 206	FLOW DIAGRAM 1-2-3114A
REQUIRED COMPLETION DATE	O.S.L. 01
FABRICATED BY TUBECO	WELD PROCEDURE
NPS DESIGNS INC. NEW YORK, N.Y.	LIVSEY & COMPANY, INC. INDIANA & MICHIGAN ELECTRIC CO. DONALD C. COOK NUCLEAR PLANT
FABRICATOR NOTE: FABRICATION MUST CONFORM TO LATEST A.E.P. ARRG. DWGS.	DWG. NO. 2-NSW-199 (SHT. 1 OF 3)