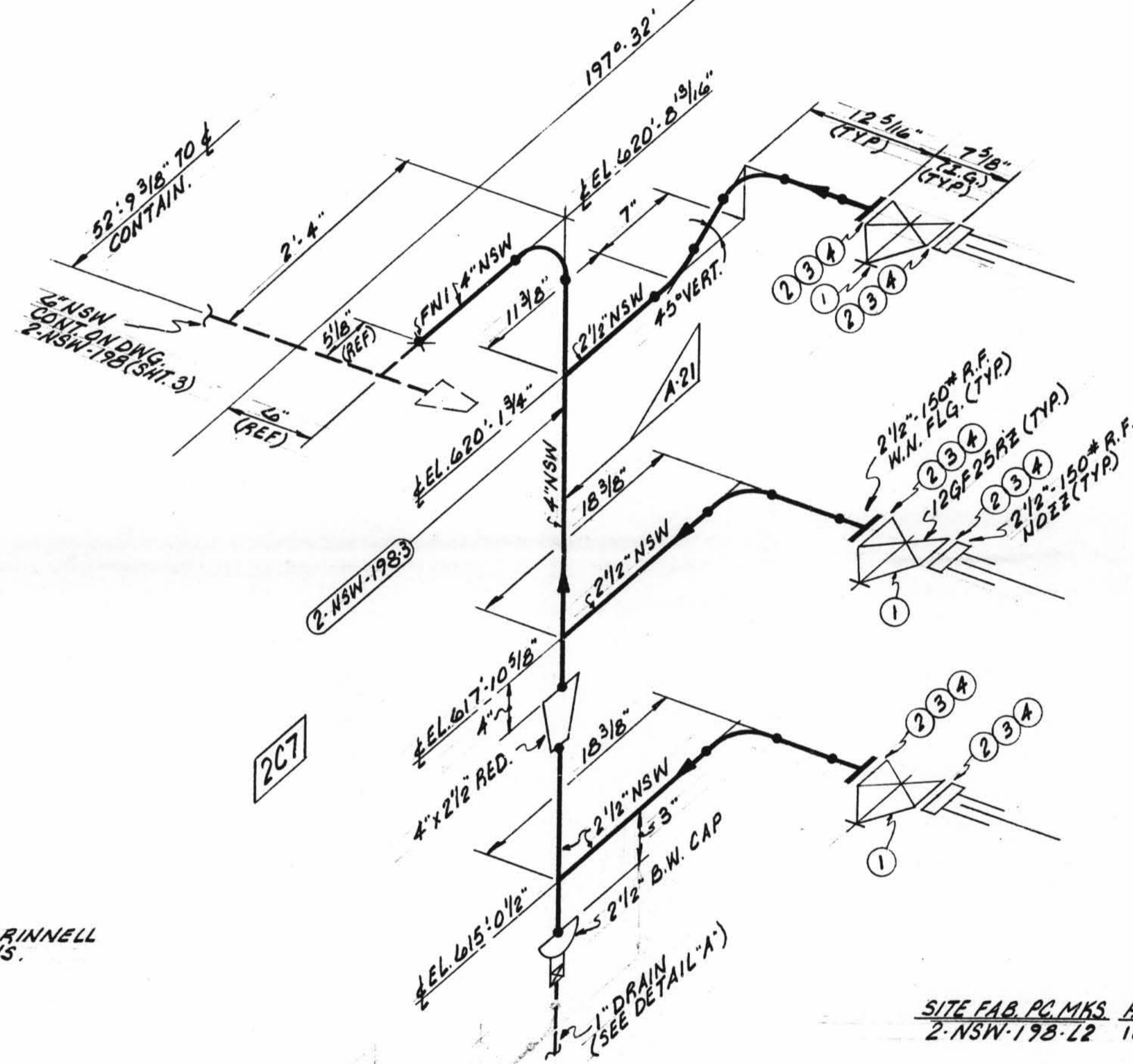
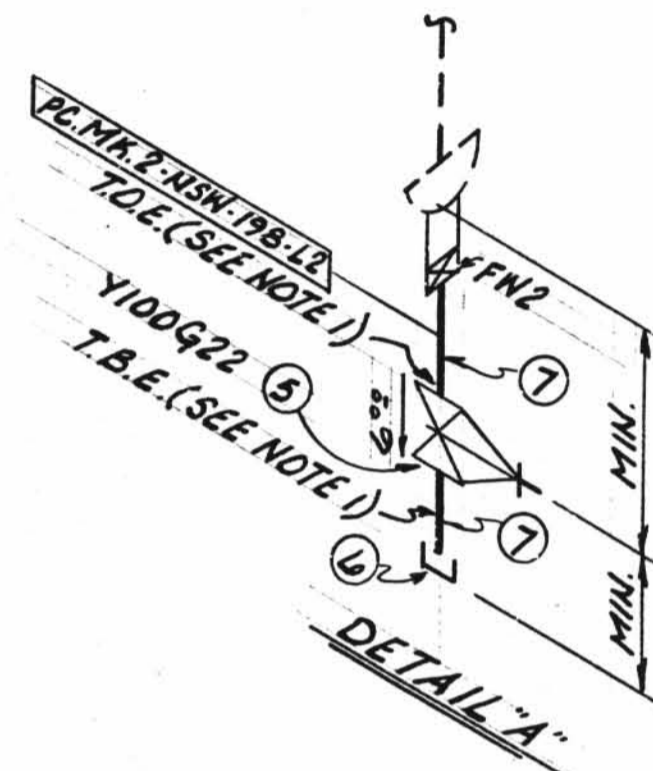
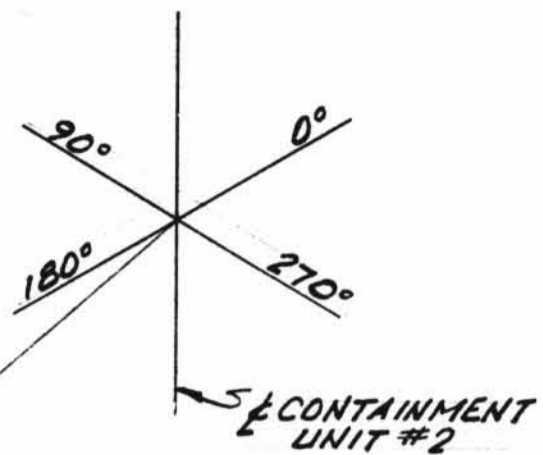
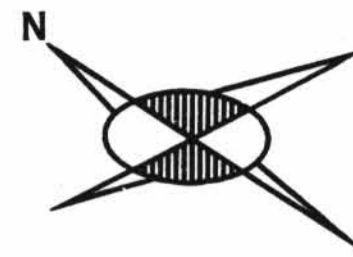


TOTAL  
FW  
2



NOTE:  
1) USE CRANE 425-A COMPOUND OR GRINNELL 1678 ON ALL THREADED CONNECTIONS.

SITE FAB. PC. MKS. PD\* PIECE MARKS  
2-NSW-198-L2 102 2-NSW-198-3

ISO SHT. NO. 3456

QSL	ITEM	QTY.	SIZE	MATERIAL DESCRIPTION	TAG No. OR ASTM MAT'L.	HEAT NO.
01	1	3	2 1/2"	125# CI FLG. D. GATE VA.	12GF25RZ	
	2	24	3/8"	3" LG. HEX. HD. MACH. BOLTS	A-307 GR. B	
	3	24	3/8"	HEAVY HEX NUTS (CL. 2 TOL.)		
	4	6	2 1/2"	1/16" THK. 150# COMP. ASB. GASK.		
	5	1	1"	150# THD. GATE VA. BRASS OR	Y100G22	
	6	1	1"	3000# C.S. THD. CAP	A-181	
	7	1	1"	PIPE (SCH. 80) SMLS. C.S.	A-106 GR. B	

REVISION RECORD

NO.	DATE	DESCRIPTION

SIZE	QUAN.	FW
4"	5	1
2 1/2"	11	-
1"	1	1

DESIGN SPEC. DCCPM102QCS	HANGER SEISMIC CLASS II	TEST REQUIREMENTS N/A	MATERIAL CLASS A-21 SPEC. 104
<small>                 S.P. = WORKING POINT                  T.O.E. = THREAD ONE END                  B.O.E. = BEVEL ONE END                  T.O.P. = TOP OF PIPE ELEV.                  Q.L.L. = MATERIAL QUALITY REQUIREMENTS                  T.L. = TRUE LENGTH                  B.S.E. = BEVEL BOTH ENDS                  P.O.E. = PLAIN ONE END                  P.B.E. = PLAIN BOTH ENDS                  S.O.E. = SHAPE ONE END                  B.O.P. = BOTTOM OF PIPE ELEV.                  T.L. = TRUE LENGTH                  F.W. = FIELD WELD                  N = HORIZONTAL                  V = VERTICAL                  S.W. = SHOP WELD                  F.W. = FIELD SHOP WELD                  F.W. = FIELD WELD                  N = HORIZONTAL                  V = VERTICAL                  S.W. = SHOP WELD                  F.W. = FIELD SHOP WELD             </small>			
PIPE A-33 A-106 A-376 A-312 STD. XY XXY 10 20 30 40 60 80 100 120 140 160 SMLS WLD		FITTINGS A-105 A-234 A-182 A-403 A-181 TESTING M.T. P.T. R.T. U.T. PRESSURE TEST MED. PRESS. DURATION	

POUR/ZONE No. 2C7	FLOW DIAGRAM 1-2-511A
REQUIRED COMPLETION DATE	Q.S.L. 01
FABRICATED BY TUBECO	WELD PROCEDURE
NPS DESIGNS INC. NEW YORK, N.Y.	LIVSEY & COMPANY, INC. INDIANA & MICHIGAN ELECTRIC CO. DONALD C. COOK NUCLEAR PLANT
FABRICATOR NOTE: FABRICATION MUST CONFORM TO LATEST A.E.P. ARRGT. DWGS.	DWN: J.R. DATE: 6/1/73 CKD: J.R. DATE: 6/1/73 ISSUED REF. DWG. 2-5692

D-14B  
2-NSW-198 (Sheet 2 of 3)  
Lower Containment Ventilation  
Unit 3 Return Line

CONTAINMENT #2  
DWG. NO. 2-NSW-198  
SHT. 2 of 3