

Calculation of Activity in Aspirated Blood. —

Container A - 3000 ml Volume - 1 ml sample

$$\frac{(261 \text{ cpm} - 90 \text{ cpm})}{1,621,220 \text{ cpm/}\mu\text{Ci}} = 1.055 \times 10^{-4} \mu\text{Ci/ml}$$

$$1.055 \times 10^{-4} \mu\text{Ci/ml} \times 3000 \text{ ml} = 0.316 \mu\text{Ci Total Activity I-125}$$

Container B - 2100 ml Volume - 1 ml Sample

$$\frac{(38,008 \text{ cpm} - 90 \text{ cpm})}{1,621,220 \text{ cpm/}\mu\text{Ci}} = 0.0234 \mu\text{Ci/ml}$$

$$0.0234 \mu\text{Ci/ml} \times 2100 \text{ ml} = 49.1 \mu\text{Ci Total Activity I-125}$$

Counting System - Ludlum

located in Nuclear Medicine hot Lab

Urine			
Blood Sample	1cc	@	9:42 PM 24 Jun 94
Urine	Bkg		
① 160 cpm	① 85		
② 151	② 72		
③ 173	③ 86		

Draft work in progress (ind) 24 June 94

22 June 94
Pg 1 of 2

Wipe Test and Blood Assay Calculations

Wipe tests Performed 21 June 94 @ ~ 9:30 PM

STD - I-125 (Sim) 18204 dpm = 0.0082 μ Li

	STD	BKG
Counting		
①	13450	91
②	13198	99
③	13504	81
\bar{x}	13384 cpm	90.3 cpm
σ	133 cpm	7.4 cpm

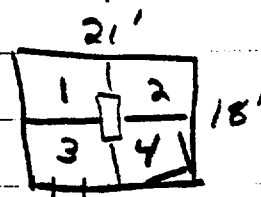
Calibration Calc:

$$\frac{(13384 - 90) \text{ cpm}}{0.0082 \text{ } \mu\text{Li}} = 1621270 \text{ cpm/} \mu\text{Li} @ 73.0\% \text{ eff}$$
$$= 1.37 \text{ dpm/cpm}$$

$$\text{MDA @ 4.66 } \sigma = \frac{7.4 \text{ cpm} \times 4.66}{1621270 \text{ cpm/} \mu\text{Li}} = 4.56 \times 10^{-6} \text{ } \mu\text{Li}$$
$$= 10 \text{ dpm}$$

Wipe test of OR —

- ① 81 cpm - 90 cpm = 0 cpm
- ② 82 cpm - 90 cpm = 0 cpm
- ③ 85 cpm - 90 cpm = 0 cpm
- ④ 87 cpm - 90 cpm = 0 cpm



Results: All wipes < 200 dpm/100 cm²

Draft work in progress - (MB) 24 June 84

22 June 84

Thyroid Bioassay Calibration -

System - Ludlum Model 22 Scaler w NaI(Tl) crystal

Standard - 0.0097 μCi Sim I-125 29 Aug 84
21,534 cpm @ 29 Aug 84

Phantom - Polyethylene Phantom source @ 1/2" depth

Calibration Counts:

	<u>STD</u>	<u>STD</u>	<u>BKG</u>
①	1613	2203	237
②	1289	2124	244
③	1943	2184	231
\bar{x}	1415	2170	237.3 cpm
σ	267	33.7	5.3 cpm

(Positioning Error)

Calibration:

$$\frac{(2170 - 237) \text{ cpm}}{0.0097 \text{ } \mu\text{Ci}} = 199,278 \text{ cpm}/\mu\text{Ci} @ 9.0\% \text{ eff}$$
$$= 11.1 \text{ dpm}/\text{cpm}$$

W. Biocassay County

22 June 94

Draft Work in Progress (18) 24 June 94

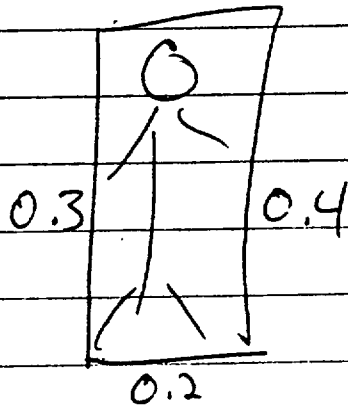
Name	Position	SS*	Index*	Thy	Sholder	Net CP
				159	170	0
00243		156	204			0
02373		238	228			10
00326		163	175			0
00435		197	192			5
00396		208	192			14
00340		187	171			16
00434		191	200			0
00252		196	200			0
00308		180	205			0
				211	189	22
00355		196	188			
				221	192	

EX. 6

DRAFT work in progress (MB) 24 June 94

Pt Survey - 22 Jan 94 (8) 10:20 PM

(1) 1st 1.5



CCH Nurse Training Documentation (MB) 24 June 94
Carolyn Norman CCH Nurse 12 hrs Nights
043-44-5124 00468 FBN 7-7

Trained in GM Survey + Rad Safety
for I-125 Prostate implant patient care.
CA Norman RN