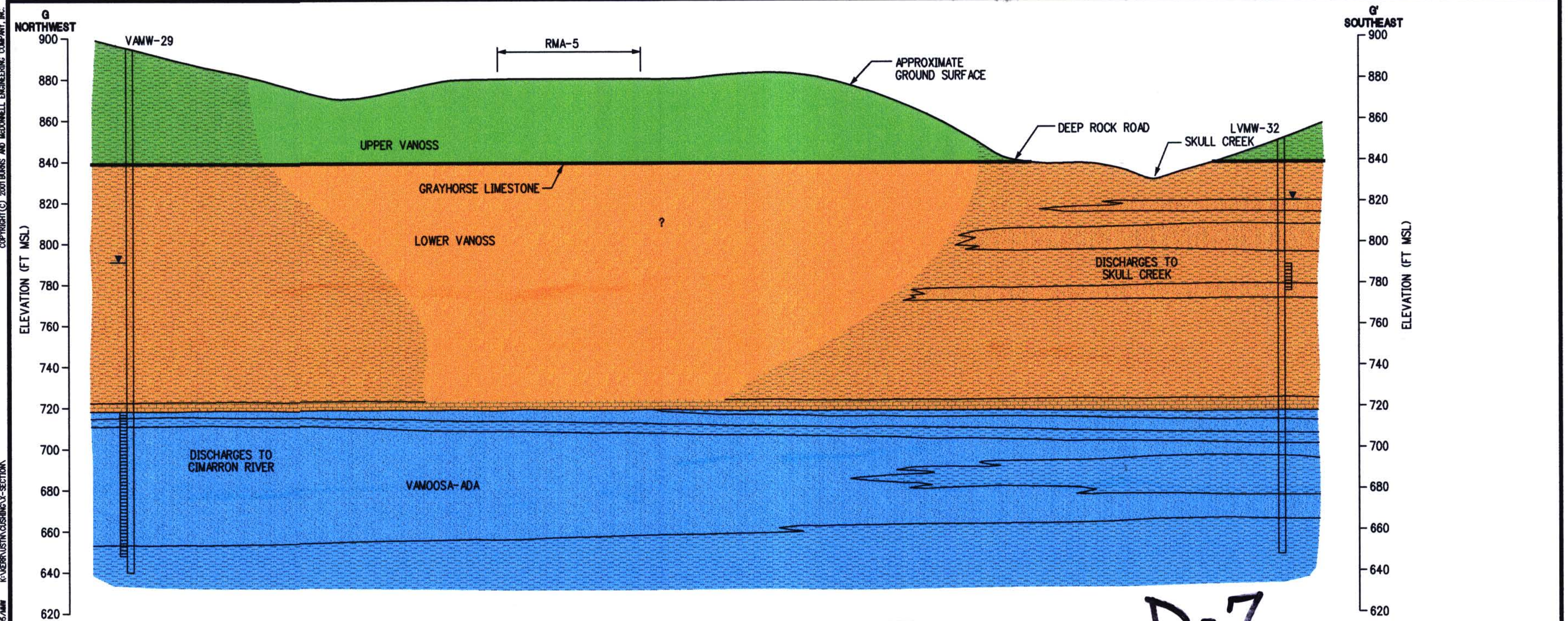


COPYRIGHT © 2001 BURNS AND McDONNELL ENGINEERING COMPANY, INC.

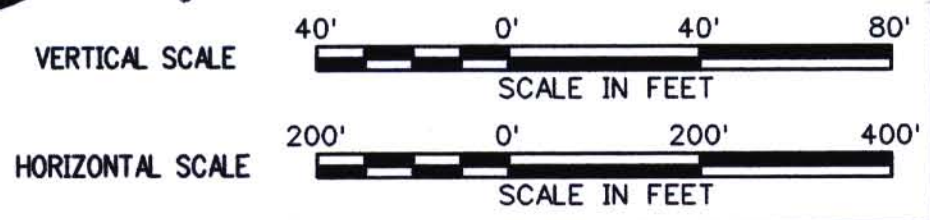
KERR-McGEE CORP. CUSHING FACILITY

KMC11X20-DGN(BORZ) OFF-61-62



- LEGEND**
- UPPER VANOSS
 - LOWER VANOSS
 - VAMOOSA-ADA
 - MUDSTONE VARIABLE GRAY TO RED
 - SANDSTONE TYPICALLY FINE-GRAINED
 - LIMESTONE
 - v WATER LEVEL

NOTE
1. VERTICAL EXAGGERATION - 5 X



 Burns & McDonnell <small>SINCE 1898</small>	<p>Plate 12 </p> <p>SITE HYDROGEOLOGIC CROSS SECTION G-G' KERR-McGEE CORP CUSHING FACILITY</p>
--	--