

Docket Nos. ~~50~~-269  
and 50-270

JAN 24 1974

Change No. 9 License No. DPR-38  
Change No. 4 License No. DPR-47

Duke Power Company  
ATTN: Mr. Austin C. Thies  
Senior Vice President,  
Production & Transmission  
422 South Church Street  
P. O. Box 2178  
Charlotte, N. C. 28201

Gentlemen:

Your letter of December 19, 1973 requested that Technical Specification 6.1, Appendix A to License No. DPR-38 and No. DPR-47 be revised to include a Maintenance Engineer who will report to the Station Superintendent and to modify the membership of the Station Review Committee. We find that there is reasonable assurance that the health and safety of the public will not be endangered by this change.

Pursuant to Section 50.59 of 10 CFR Part 50, Technical Specifications, Appendix A to License Nos. DPR-38 and DPR-47, have been changed in accordance with the revised Technical Specifications 6.1 enclosed. These changes are identified as Change No. 9 to Technical Specifications License DPR-38 and Change No. 4 to Technical Specifications License DPR-47 and are effective on the date of issuance.

Sincerely,

151

Voss A. Moore, Assistant Director  
for Light Water Reactors Group 2  
Directorate of Licensing

Enclosure:

1. Tech Spec Change No. 9 to  
License No. DPR-38
2. Tech Spec Change No. 4 to  
License No. DPR-47

Lo

OFFICE <b>cc:</b>	See Next Page				
SURNAME <b>&gt;</b>					
DATE <b>&gt;</b>					

Austin C. Thies

- 2 -

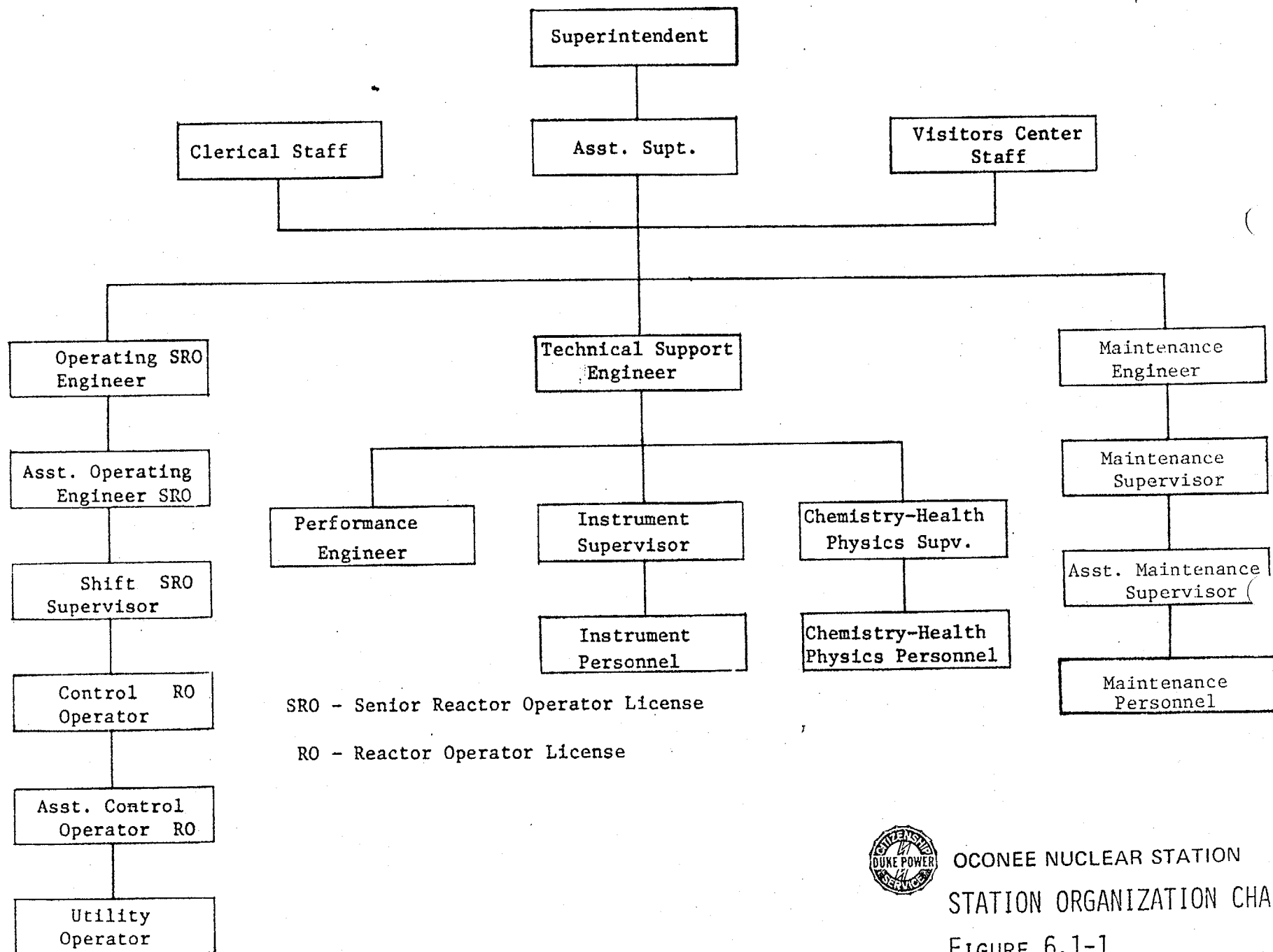
JAN 24 1974

cc: William L. Porter  
Duke Power Company  
422 South Church Street  
P. O. Box 2178  
Charlotte, N. C. 28201

DISTRIBUTION:

AEC PDR  
Local PDR  
Dockets (2)  
LWR 2-3 Rdg (2)  
OGC  
RO (3)  
VAMoore  
DSkovholt  
DEisenhut  
RWKlecker  
RVollmer  
MJinks (w/ 4 encls)  
WOMiller  
IAPeltier  
EIGoulbourne  
SKari  
ACRS (16)  
KGoller  
KKniel  
JStolz  
WButler  
ASchwencer

OFFICE →	LWR 2-3	L	Mc Dermott RO	L:C/LWR 2-3	L:AD/LWR	
SURNAME →	IAPeltier kmf	RVanNiel	Jim.	ASchwencer	VAMoore	
DATE →	1/18/74	1/18/74	1/23/74	1/23/74	1/24/74	



OCONEE NUCLEAR STATION  
STATION ORGANIZATION CHART  
FIGURE 6.1-1

- b. At least one licensed Reactor Operator per unit and two Senior Reactor Operators shall be at the station at all times when there is fuel in two reactor vessels. One licensed operator per unit shall be in the control room for that unit. At no time will the shift crew be less than three persons per unit.
- c. Two licensed reactor operators shall be in the control room during startup and scheduled shutdown of the reactor, and during recovery from reactor trips.
- d. At least one licensed reactor operator shall be in the reactor building when fuel handling operations are in progress in the reactor building. An operator holding a Senior Reactor Operators license and assigned no other concurrent operational duties shall be in direct charge of refueling operations.
- e. At least one operator per shift for each unit will have sufficient training to perform routine health physics requirements.
- f. If the computer for a reactor is inoperable for more than eight (8) hours, an additional operator shall be called in to supplement the shift crew.

#### 6.1.2 Review and Audit

In matters of nuclear safety and radiation exposure, review and audit of station operation, maintenance and technical matters shall be provided by two committees as follows (Reference Figure 6.1.2):

##### 6.1.2.1 Station Review Committee

###### a. Membership

The Superintendent shall appoint an on-site review committee consisting of at least five members of the station supervisory staff. Representation shall be provided from Operations and from Technical Support. Membership shall include expertise appropriate to the items being considered by the committee.

The chairman of the on-site review committee shall be appointed by the Superintendent.

###### b. Meeting Frequency

This committee shall meet at least once each month and as required on call by the chairman.

###### c. Quorum

The chairman plus two members shall constitute a quorum.

###### d. Responsibilities

The committee shall have the following responsibilities:

- (1) Review all new procedures or proposed significant, safety-related changes to existing procedures as determined by the Station Superintendent.