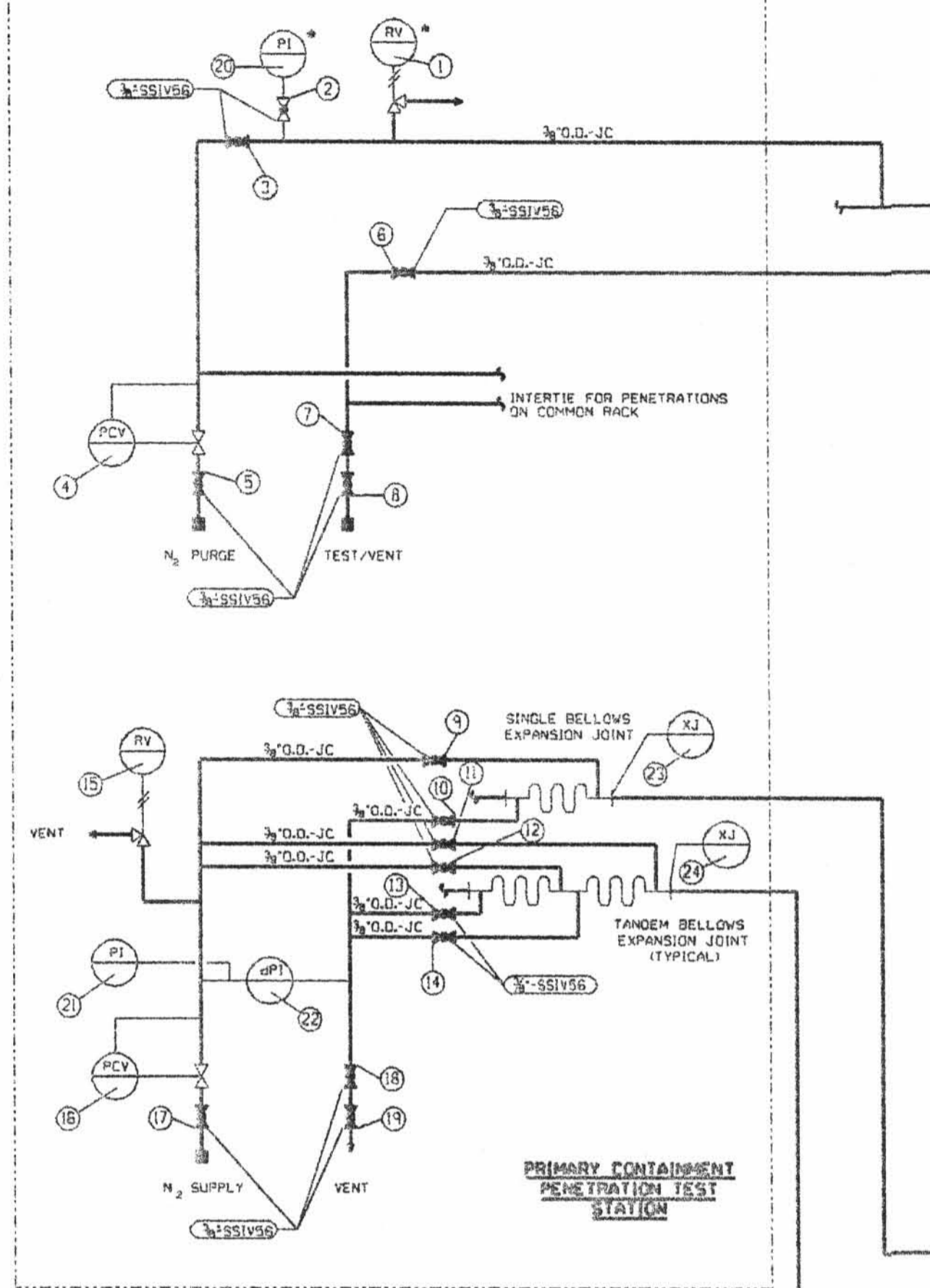
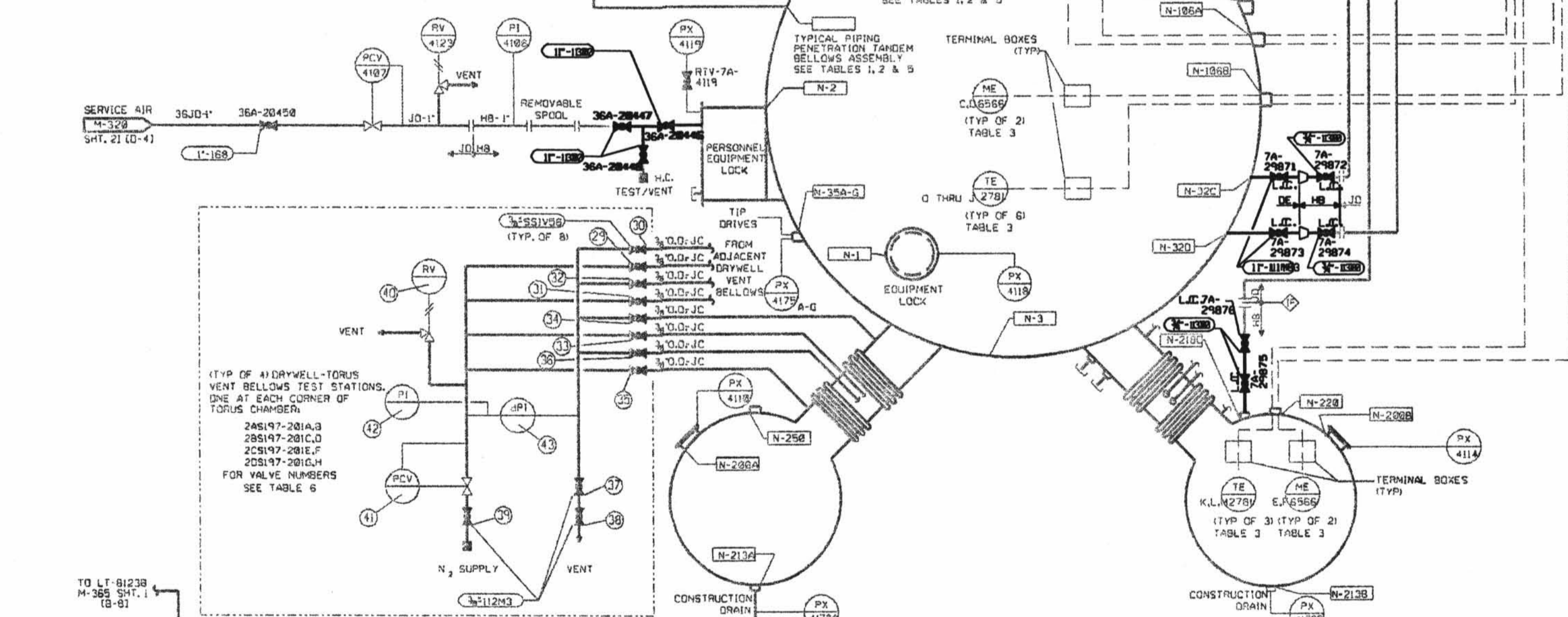


(FOR VALVE NO.'S ON RACKS 205198, 205199 & 205200 SEE TABLES 1, 2 & 5 RESPECTIVELY)



PEN	N-108A	N-108C	N-108A	N-108B	N-108C	N-108D	N-108A	N-108B	N-108C	N-108D	N-108A	N-108B	N-108C	N-108D	N-108A	N-108B	N-108C	N-108D	RACK SPECIFIC	
TYPE	ELECT	ELECT	ELECT	ELECT	ELECT	ELECT	ELECT	ELECT	ELECT	ELECT	ELECT	ELECT	ELECT	ELECT	ELECT	ELECT	ELECT	ELECT		
1	4172	4174	4176	4177	4183	4179	4181	4185	4182	4184	4188	4189							4195	
2	RTV-7A-4172	RTV-7A-4174	RTV-7A-4176	RTV-7A-4177	RTV-7A-4183	RTV-7A-4179	RTV-7A-4181	RTV-7A-4185	RTV-7A-4182	RTV-7A-4184	RTV-7A-4188	RTV-7A-4189							7A-29828	
3	7A-29807A	7A-29807C	7A-29818A	7A-29818B	7A-29818C	7A-29818D	7A-29819A	7A-29819B	7A-29822A	7A-29822B	7A-29823	7A-29828							4195	
4																				7A-29828
5																				7A-29828
6	7A-29828A	7A-29828C	7A-29817A	7A-29817B	7A-29817C	7A-29817D	7A-29828A	7A-29828B	7A-29828C	7A-29828D	7A-29829								7A-29828	
7																				7A-29828
8																				7A-29828
9																				7A-29828
10																				7A-29828
11																				7A-29828
12																				7A-29828
13																				7A-29828
14																				7A-29828
15																				7A-29828
16																				7A-29828
17																				7A-29828
18																				7A-29828
19																				7A-29828
20	4172	4174	4176	4177	4183	4179	4181	4185	4182	4184	4188	4189							4195	
21																				4195
22																				4195
23																				4195
24																				4195

PEN	N-108A	N-108B	N-108C	N-231A	N-231B	N-113	N-114	N-118	N-117	RACK SPECIFIC
TYPE	ELECT	ELECT	ELECT	ELECT	ELECT	TANDEM	TANDEM	SINGLE	TANDEM	
1	4198	4191	4192	4173	4175					
2	RTV-7A-4198	RTV-7A-4191	RTV-7A-4192	RTV-7A-4173	RTV-7A-4175					
3	7A-29810A	7A-29810B	7A-29810C	7A-29831A	7A-29831B					4197
4										7A-29828
5										7A-29828
6	7A-29811A	7A-29811B	7A-29811C	7A-29832A	7A-29832B					7A-29828
7										7A-29828
8										7A-29828
9										7A-29828
10										7A-29828
11										7A-29828
12										7A-29828
13										7A-29828
14										7A-29828
15										7A-29828
16										7A-29828
17										7A-29828
18										7A-29828
19										7A-29828
20	4198	4191	4192	4173	4175					4197
21										4197
22										4197
23										4197
24										4197



PEN	N-108D	N-108E	N-108C	N-108D	N-108E	N-108B	N-108A	N-108F	N-108H	N-108C	N-108D	N-108C	N-108D	N-11	N-12	N-13A	N-13A	RACK SPECIFIC		
TYPE	ELECT	ELECT	ELECT	ELECT	ELECT	ELECT	ELECT	ELECT	ELECT	ELECT	ELECT	ELECT	ELECT	PIPING	PIPING	PIPING	PIPING			
1	4185	4186	4187	4188	4188	4171	4179	4189	4188	4187	4184	4188	4183	4181					4193	
2	RTV-7A-4185	RTV-7A-4186	RTV-7A-4187	RTV-7A-4188	RTV-7A-4188	RTV-7A-4171	RTV-7A-4179	RTV-7A-4189	RTV-7A-4188	RTV-7A-4187	RTV-7A-4184	RTV-7A-4188	RTV-7A-4183	RTV-7A-4181					7A-29822A	
3	7A-29807D	7A-29807E	7A-29818C	7A-29818D	7A-29818E	7A-29818F	7A-29818G	7A-29818H	7A-29818I	7A-29818J	7A-29818K	7A-29818L	7A-29822C	7A-29822D					4193	
4																				7A-29822A
5																				7A-29822A
6	7A-29828E	7A-29828F	7A-29817G	7A-29817H	7A-29817I	7A-29817J	7A-29817K	7A-29817L	7A-29828C	7A-29828D	7A-29828E	7A-29828F							7A-29822A	
7																				7A-29822A
8																				7A-29822A
9																				7A-29822A
10																				7A-29822A
11																				7A-29822A
12																				7A-29822A
13																				7A-29822A
14																				7A-29822A
15																				7A-29822A
16																				7A-29822A
17																				7A-29822A
18																				7A-29822A
19																				7A-29822A
20	4185	4186	4187	4188	4188	4171	4179	4189	4188	4187	4184	4188	4183	4181					4193	
21																				4193
22																				4193
23																				4193
24																				4193

PEN	N-201A	N-201B	N-201C	N-201D	N-201E	N-201F	N-201G	N-201H	RACK SPECIFIC
29	7A-29808A	7A-29808B	7A-29808C	7A-29808D	7A-29808E	7A-29808F	7A-29808G	7A-29808H	
30	7A-29808A	7A-29808B	7A-29808C	7A-29808D	7A-29808E	7A-29808F	7A-29808G	7A-29808H	
31	7A-29808A	7A-29808B	7A-29808C	7A-29808D	7A-29808E	7A-29808F	7A-29808G	7A-29808H	
32	7A-29808A	7A-29808B	7A-29808C	7A-29808D	7A-29808E	7A-29808F	7A-29808G	7A-29808H	
33	7A-29808A	7A-29808B	7A-29808C	7A-29808D	7A-29808E	7A-29808F	7A-29808G	7A-29808H	
34	7A-29808A	7A-29808B	7A-29808C	7A-29808D	7A-29808E	7A-29808F	7A-29808G	7A-29808H	
35	7A-29808A	7A-29808B	7A-29808C	7A-29808D	7A-29808E	7A-29808F	7A-29808G	7A-29808H	
36	7A-29808A	7A-29808B	7A-29808C	7A-29808D	7A-29808E	7A-29808F	7A-29808G	7A-29808H	
37	7A-29808A	7A-29808B	7A-29808C	7A-29808D	7A-29808E	7A-29808F	7A-29808G	7A-29808H	
38	7A-29808A	7A-29808B	7A-29808C	7A-29808D	7A-29808E	7A-29808F	7A-29808G	7A-29808H	
39	7A-29808A	7A-29808B	7A-29808C	7A-29808D	7A-29808E	7A-29808F	7A-29808G	7A-29808H	
40	4124A	4124B	4124C	4124D	4124E	4124F	4124G	4124H	
41	417A	417B	417C	417D	417E	417F	417G	417H	
42	4109A	4109B	4109C	4109D	4109E	4109F	4109G	4109H	
43	4108A	4108B	4108C	4108D	4108E	4108F	4108G	4108H	

INSTRUMENT NO.	ELEVATION	AZIMUTH	DISTANCE FROM DRYWELL E	COMPARTMENT
TE-2781 A	208	45	16	DRYWELL
TE-2781 B	208	225	16	DRYWELL
TE-2781 C	182	98	28	DRYWELL
TE-2781 D	162	278	28	DRYWELL
TE-2781 E	158	328	24	DRYWELL
TE-2781 F	158	138	24	DRYWELL
TE-2781 G	127	98	22	DRYWELL
TE-2781 H	127	278	22	DRYWELL
TE-2781 J	128	0	8	DRYWELL
TE-2781 K	115	128	86	TORUS
TE-2781 L	115	248	86	TORUS
TE-2781 M	115	0	86	TORUS
ME-6566 A	288	45	16	DRYWELL
ME-6566 B	162	225	16	DRYWELL
ME-6566 C	158	328	24	DRYWELL
ME-6566 D	127	238	22	DRYWELL
ME-6566 E	115	248	86	TORUS
ME-6566 F	115	0	86	TORUS

NOTES:
 1. THIS DRAWING SHOWS SERVICE AIR AND ILRT PIPING AND VALVES IN THE SCOPE OF LICENSE RENEWAL BECAUSE THEY FORM PART OF THE PRIMARY CONTAINMENT PRESSURE BOUNDARY. THE TEST PIPING AND VALVES NOT SHOWN IN SCOPE ARE NOT PART OF THE PRIMARY CONTAINMENT PRESSURE BOUNDARY.
 2. THIS DRAWING INCLUDES THE FOLLOWING LICENSE RENEWAL SYSTEMS:
 PC - PRIMARY CONTAINMENT ISOLATION
 3. THIS DRAWING IS BASED ON P&ID M-332 SHEET 1 REV 29.

LR-M-332 (SHT.1)

THIS SHEET FOR UNIT 2 & COMMON MECHANICAL

LICENSE RENEWAL DRAWING PRIMARY CONTAINMENT LEAK TESTING

PEACH BOTTOM APS UNITS 2 & 3 EXEMPLE

SHEET 1 OF LR-M-332

D-37