



**Pacific Gas and  
Electric Company**

**David H. Oatley**  
Vice President  
Diablo Canyon Operations

Diablo Canyon Power Plant  
P.O. Box 56  
Avila Beach, CA 93424

805.545.4350  
Fax: 805.545.4234

June 15, 2001

PG&E Letter DCL-01-068

U.S. Nuclear Regulatory Commission  
ATTN: Document Control Desk  
Washington, DC 20555-0001

Docket No. 50-275, DPR-80  
Docket No. 50-323, DPR-82  
Diablo Canyon Units 1 and 2  
Monthly Operating Report for May 2001

Dear Commissioners and Staff:

Attached is the Monthly Operating Report for Diablo Canyon Power Plant, Units 1 and 2, for May 2001. This report is submitted in accordance with Technical Specification 5.6.4 and NRC Generic Letter 97-02. Also enclosed is a summary of the annual surveillance of the breakwaters, which is submitted in accordance with Equipment Control Guideline 17.3, "Flood Protection."

Sincerely,

for David H. Oatley

cc: Robert D. Glynn, Jr.  
Kurt Larson  
Barbara Lewis  
Ellis W. Merschoff  
David L. Proulx  
Girija S. Shukla  
Gregory M. Rueger  
INPO Record Center

Enclosures

LMP/1713/R0220421

JED24

**MAY 2001, OPERATION SUMMARIES  
DIABLO CANYON POWER PLANT  
UNITS 1 AND 2**

Summary of Unit 1 Operation

Unit 1 remained in Mode 1 (Power Operation), at approximately 100 percent power during the month. There were no significant operational activities.

Summary of Unit 2 Operation

Unit 2 began May in Mode 5 (Cold Shutdown), continuing the Unit 2 tenth refueling outage. On May 28, 2001, at 0518 PDT, Unit 2 was paralleled to the grid, completing the refueling outage in 29.5 days. On May 31, 2001, Unit 2 was in Mode 1 at approximately 85 percent power for ongoing power ascension testing.

Actuations of Steam Generator Safety or Pressurizer Power Operated Relief Valves

There were no challenges to the pressurizer power operated relief valves, or steam generator safety valves.

Report of Breakwater Survey Inspection Required by Diablo Canyon Power Plant  
Equipment Control Guideline 17.3

The breakwaters were inspected during the months of November 2000 through April 2001, in accordance with Equipment Control Guideline 17.3, "Flood Protection." In April, PG&E performed Surveillance Test Procedure M-90B, "Annual Surveillance of Diablo Canyon Breakwaters," which measured the locations of eight survey control points and compared the measurements to previous surveys.

<u>Coordinate</u>	Maximum difference in feet from:	
	<u>Baseline</u> (point)	<u>last year</u> (point)
Easting	-0.18 (W-2A)	-0.08 (W-2A, W-5A)
Northing	-0.08 (W-6A)	-0.12 (W-5A, W-6A)
Elevation	-0.25 (W-3A)	-0.07 (W-3A, W-5A)

Compared to the baseline survey in 1984, the maximum difference in the position of a breakwater survey control point was -0.25 feet. The maximum difference since the March 2000 survey was -0.12 feet. The differences are considered negligible and indicate no appreciable breakwater displacement or settlement. The breakwaters performed as designed and remain in good condition. Several breakwater pictures taken in April are provided in Enclosure 3. Photo 8 shows an area of localized minor degradation where a small piece of concrete (~4 ft diameter by 2 ft thick) was displaced approximately 2 feet. PG&E believes this displacement occurred during the week of January 8, 2001, as a result of large swells of up to 23 feet.

### OPERATING DATA REPORT

DOCKET NO.: 50-275  
UNIT NAME: Diablo Canyon Unit 1  
DATE: 06/01/2001  
COMPLETED BY: L. Parker  
TELEPHONE: (805) 545-3386

REPORT MONTH: May 2001

1.	Design Electrical Rating (MWe - Net):	1103
2.	Maximum Dependable Capacity (MWe - Net):	1087

		This Month	YTD	Cumulative
3.	Number of Hours Reactor Critical:	744.0	3623.0	122284.4
4.	Number of Hours Generator On-Line:	744.0	3615.1	120958.2
5.	Unit Reserve Shutdown Hours:	0.0	0.0	0.0
6.	Net Electrical Energy Generated (MWH):	824652	3962570	124616073

**UNIT SHUTDOWNS**

DOCKET NO.: 50-275  
 UNIT NAME: Diablo Canyon Unit 1  
 DATE: 06/01/2001  
 COMPLETED BY: L. Parker  
 TELEPHONE: (805) 545-3386

REPORT MONTH: May 2001

NO.	DATE	TYPE F (Forced) S (Scheduled)	DURATION (HOURS)	REASON <sup>1</sup>	METHOD OF SHUTTING DOWN <sup>2</sup>	CAUSE & CORRECTIVE ACTIONS COMMENTS
N/A						There were no shutdowns this month.

1. Reason

- A-Equipment Failure (Explain)
- B-Maintenance or Test
- C-Refueling
- D-Regulatory Restriction
- E-Operator Training/License Examination
- F- Administrative
- G-Operational Error (Explain)
- H-Other (Explain)

2. Method

- 1-Manual
- 2-Manual Trip/Scram
- 3-Automatic Trip/Scram
- 4-Continuation from Previous Month
- 5-Other

**OPERATING DATA REPORT**

DOCKET NO.: 50-323  
UNIT NAME: Diablo Canyon Unit 2  
DATE: 06/01/2001  
COMPLETED BY: L. Parker  
TELEPHONE: (805) 545-3386

REPORT MONTH: May 2001

1.	Design Electrical Rating (MWe - Net):	1119
2.	Maximum Dependable Capacity (MWe - Net):	1087

		This Month	YTD	Cumulative
3.	Number of Hours Reactor Critical:	159.4	2985.0	117521.8
4.	Number of Hours Generator On-Line:	90.7	2915.6	116059.2
5.	Unit Reserve Shutdown Hours:	0.0	0.0	0.0
6.	Net Electrical Energy Generated (MWH):	34123	3080714	121828274

**UNIT SHUTDOWNS**

DOCKET NO.: 50-323  
 UNIT NAME: Diablo Canyon Unit 2  
 DATE: 06/01/2001  
 COMPLETED BY: L. Parker  
 TELEPHONE: (805) 545-3386

REPORT MONTH: May 2001

NO.	DATE	TYPE F (Forced) S (Scheduled)	DURATION (HOURS)	REASON <sup>1</sup>	METHOD OF SHUTTING DOWN <sup>2</sup>	CAUSE & CORRECTIVE ACTIONS COMMENTS
1	010428	S	653.3	C	4	Unit 2 continued its tenth refueling outage, which completed 5/28/01.

**1. Reason**

- A-Equipment Failure (Explain)
- B-Maintenance or Test
- C-Refueling
- D-Regulatory Restriction
- E-Operator Training/License Examination
- F- Administrative
- G-Operational Error (Explain)
- H-Other (Explain)

**2. Method**

- 1-Manual
- 2-Manual Trip/Scram
- 3-Automatic Trip/Scram
- 4-Continuation from Previous Month
- 5-Other

**Breakwater Photos (taken 4/12/2001)**

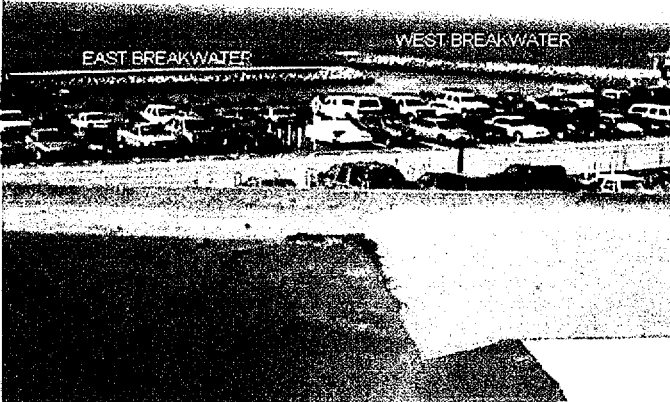


PHOTO 1  
OVERVIEW OF EAST & WEST BREAKERWATER

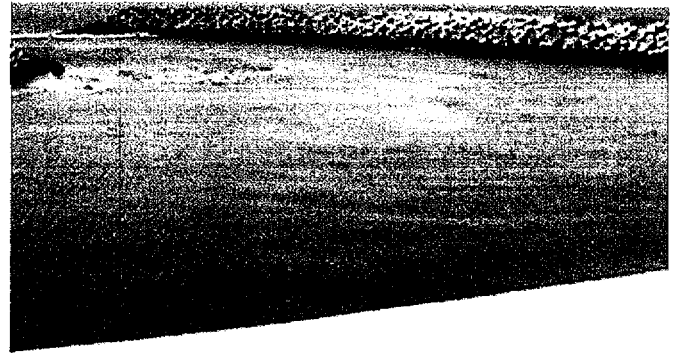


PHOTO 2  
OVERVIEW OF WEST BREAKWATER FROM TOP DECK OF INTAKE STRUCTURE

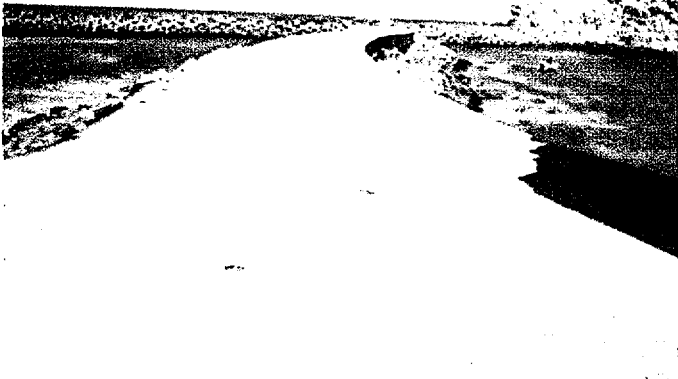


PHOTO 3  
OVERVIEW OF EAST BREAKWATER FROM TOP DECK OF INTAKE STRUCTURE

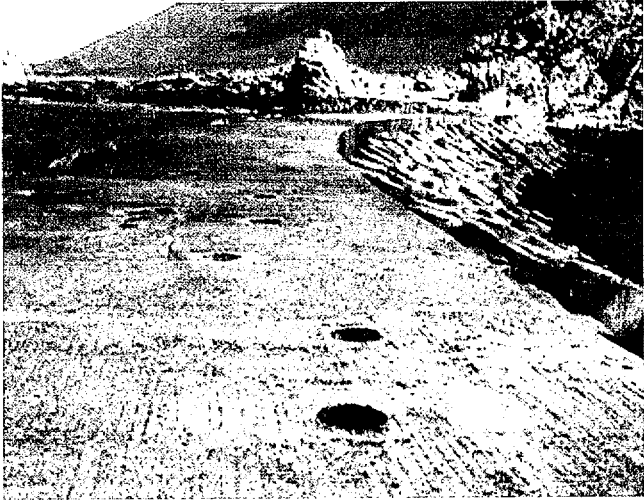


PHOTO 4  
EAST BREAKWATER VIEW FROM END OF CAP

**Breakwater Photos (taken 4/12/2001)**



**PHOTO 5  
EAST BREAKWATER FROM SHORELINE**



**PHOTO 6  
WEST BREAKWATER VIEW FROM END OF CAP**



**PHOTO 7  
WEST BREAKWATER FROM SHORELINE**



**PHOTO 8  
WEST BREAKWATER AT WEST EDGE OF  
CONCRETE CAP AT INTERSECTION OF CAP 6 & 7.  
(Taken 1/16/2001)**