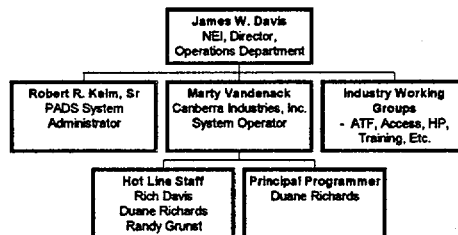
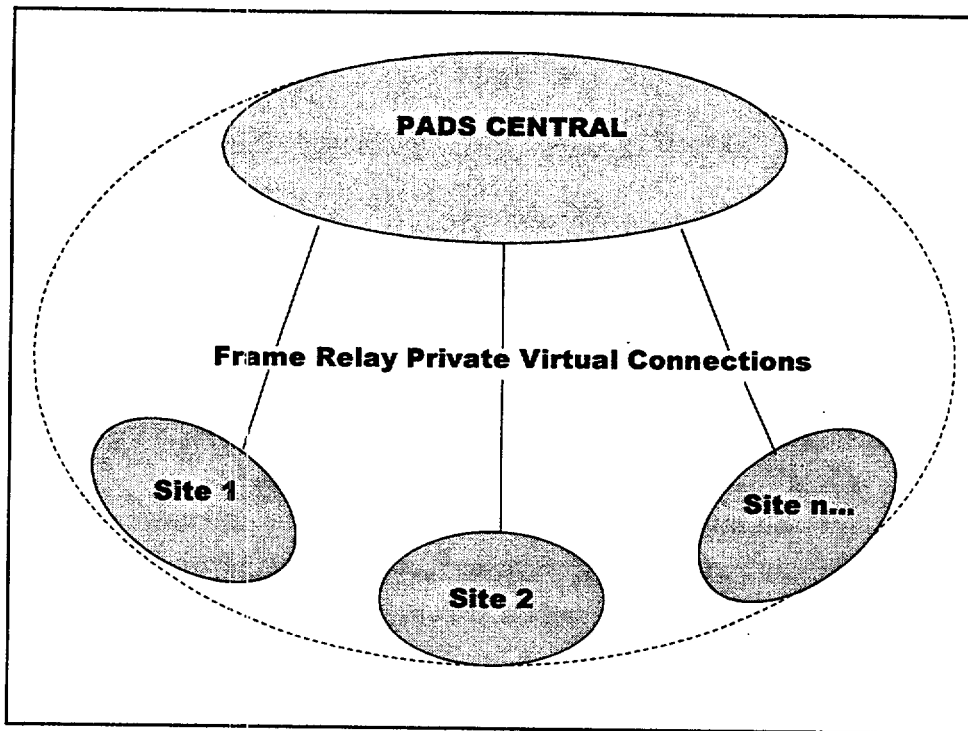


Evolving To An Electronic System

- **All Workers Undergo All Program Elements**
- **91-03 Transfer – Permitted the Physical (Paper) Transfer of Worker Data**
- **Common Performance Requirements (Rules) Ensured Equality Within programs**
- **Common Data Standards (PADS) Permit Electronic Sharing of Program Elements**

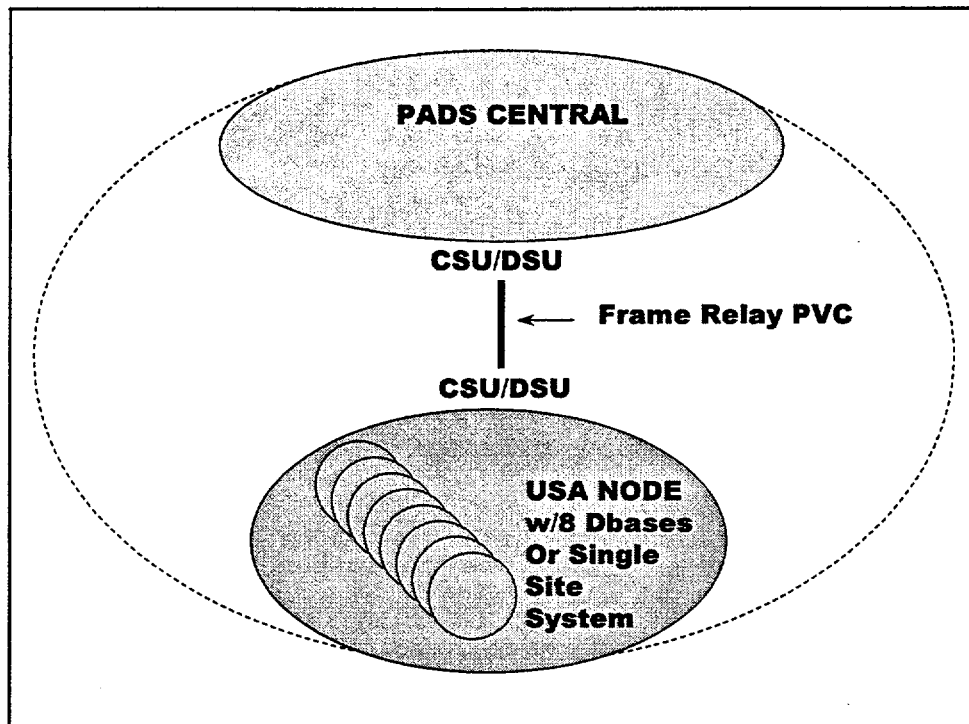
PADS MANAGEMENT TEAM





PADS DESIGN STRENGTHS

- **Uses Proven Technology** (Computers-Software)
- **Secure Environment** (Telecommunications and Networks)
- **Scalable to Needs of Industry**
 - Single System/Single Database
 - Single System/Multiple Databases
- **Transportable**
- **Reliable** – Operating Continuously Since July 1989



SECURE ENVIRONMENT

- **Direct PVC Connection "On" 24 Hrs/day**
- **Accessed Either Directly or Through Local Area Network (LAN)**
 - **Relies on Logon Techniques**
 - **USERID Accounts**
 - **Passwords (Changed on Specified Frequency)**
 - **Data Access Uses "Permission" Levels - Review, Change, Add, Delete Down to Screen, Field Level, Table or Report Level**

PADS IS SCALABLE

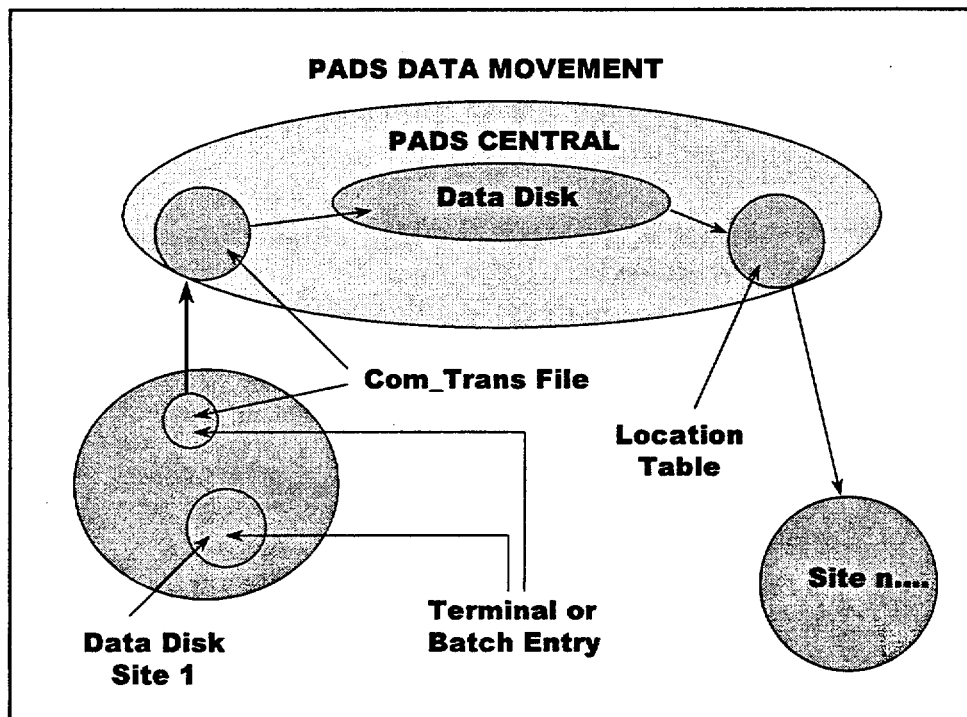
- **Supports Single Site/single Database System (Original Configuration)**
- **As Networks Matured, One System Could Be Sized to Handle Multiple Databases for the Same Company e.g., *Progress Energy*, and Added to LAN**
- **As Utilities Merged or Formed Alliances, Single System Are Sized to Serve Multiple Companies e.g., *Utility Service Alliance (USA)***

PADS IS RELIABLE

- **Operating Continuously Since July 1989**
- **Available 24 Hrs/day**
- **Disaster Recovery Plan**
- **Site Systems Monitored Continuously for Failure Points E.G., Communications Disruptions**
- **Backups Weekly at Central and Monthly at Sites**

PADS IS RELIABLE (Cont.)

- **Uses combination of Journals and Checkpoints to recreate database in the event of hardware or software failure.**
- **Each Site Has Administrator and System Manager Assigned**
- **PADS Hotline 14 hrs/day 5 days/week**



PADS - MAKING CHANGES

- **Controlled Through "ECN" Process Defined in Procedures**
- **Draft Design Developed and Costs Obtained**
- **Reviewed/approved by Industry Panel – ATF**
- **Must Fit Within PADS Budget**
- **Developed and Tested IAW Software Quality Assurance Plan**

PADS QUALITY PROGRAMS

- **Pre-Operational Audit – Once Prior to Initial Operations**
- **Data Validation – Monthly on Each Database**
- **Internal Audits - Biennial**
- **Assistance Visits – As Needed**
- **Central System Audited - Biennial**

SAMPLE PADS POLICIES

Key Policies:

- **General**

- **Information from PADS may only be used for the purpose of processing applications for access authorization (NEI 95-05 §2.0)**
- **When a PADS screen indicates that “additional information” is available, a Participant cannot presume the information is disqualifying...a PADS database entry ...may not be used as an automatic basis for denial of access. (NEI 95-05 §2.0)**

SAMPLE PADS POLICIES (Cont.)

- **Information Security**

- **Access to PADS terminals on a “need to know” basis (NEI 95-05 §2.1)**
- **Site Administrator must assign identification numbers and passwords to users and the passwords are changed at least every 90 days (NEI 95-05 §2.1)**

SAMPLE PADS POLICIES (Cont.)

- **Program Validity**

- If potentially disqualifying information is received or developed on an individual after UA has been granted, PADS will be updated within one (1) business day *(NEI 95-05 §2.2)*
- Any participant that authorizes ...temporary UA before the Full UAA is completed shall ensure that the AA program features are completed for FULL UA *(NEI 95-05 §2.2)*

PADS IS CONSENT-BASED

- **Worker must authorize entry of data into PADS** *(NEI 95-05 §2.0)*
- **Worker has right to request copy of records for review and challenge** *(NEI 95-05 §2.0)*
- **Worker may withdraw consent by written notice to a PADS participant** *(NEI 95-05 §2.0)*

DATA OWNERSHIP

- **Only Company Making Entry Into PADS May Change the Entry**
- **Controlled by Software**

TYPES OF SCREENS

- **Without Data Ownership**
 - **Top Level (TOPL)**
 - **Positive Identification (POID)**
- **With Data Ownership**
 - **Security Screens (SEC1-SEC6)**
 - **Health Physics (HPED)**
 - **Respirator (RPFT & RPME)**
 - **Training (TRNS)**

TABLE PERMISSIONS

- **Company Code (COMM)**
 - **Controlled by System Operator**
- **Phone Directory (PHON)**
 - **Controlled by individual sites**

Personnel Access Data System - Update

PADS Supports:

- **34 Companies**
- **66 Individual Plants**
- **103 Commercial Nuclear Units**

PADS SYSTEM

System Description:

- **41 Nodes (Compaq AlphaServers)**
- **1 Central Computer**
- **Frame Relay Network**

PADS SOFTWARE

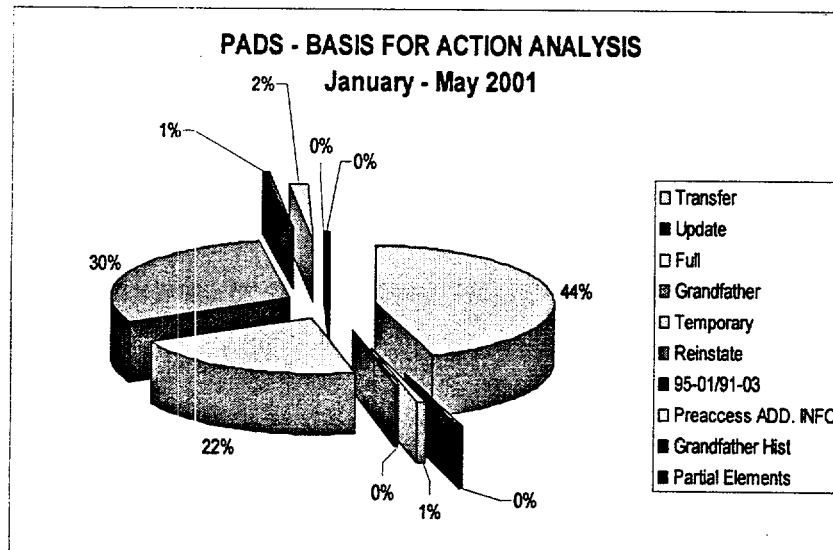
Software:

- **VMS Operating System**
- **INGRES II (Database Management Software)**
- **PADS Software**
- **Communications Software**

BASIS FOR ACTION ANALYSIS January-May 2001

Since January 1, 2001:

- **75% of Workers Inprocessed are Transfers or Reinstatements**
- **22% are Rookies**
- **3% Combination of 95-01/91-03, Grandfathers, Pre-Access Denials, or workers who have not completed the processing**



WORKER DATA IN PADS

205,992 Workers Documented in PADS

- **629,500 Individual Access Records**
- **259,700 Background Investigations**
- **565,300 FFD Tests**
- **1,102,400 Dosimetry Records**
- **542,100 Training Records**
- **4,690,700 Total Records**

ADDITIONAL INFORMATION

- **Pre-Access Additional Information – 9442 (1.5%)**
- **Additional Information – 14,849 (2.4%)**
- **Additional Information Subsequent To Termination – 10,964 (1.7%)**

NEI SHARED AUDIT PROGRAM

NEI Shared Audit Program:

- **Schedules audits for contractor/vendor company audits used by two or more companies**
- **Currently (2001) 36 Audits Scheduled**
- **2002 Schedule being developed** *(To Be Announced in July 2001)*

NEI SHARED AUDIT PROGRAM (Cont.)

- **Conducted Under Lead Auditor Company Audit Program**
- **Sharing Formula Based on Number of Nuclear Units and the Number of C/V's Used**
- **Audit Team Composition Reviewed Annually**
- **Lead Auditor is Responsible for Audit**
- **AOC Reviews Reports for Compliance with NEI 94-02**

INDUSTRY MEETINGS - 2001

PADS-Related Meetings:

- **AA & FFD Workshop** (July 2001)
- **Auditor Meeting** (September 2001)
- **Access Personnel** (As Needed)
- **HP Dosimetry Personnel** (December 2001)
- **Site Administrator/System Manager** (As Needed)
- **Audit oversight Committee** (Once per Calendar Quarter)

CRAFT/SKILL TASKS UNDER DEVELOPMENT

Additions To PADS (Cont):

- **Personal Protective Equipment**
- **Rigging**
- **Fire Extinguisher Operation**
- **Torquing**
- **FME (SOER 95-01)**
- **Electrical Safety**
- **Swaglock Training**
- **SOERS**

PADS – UPCOMING ADDITIONS

Evolving Programs:

- **NEI 99-08**
- **Craft/Skill Training Documentation**
- **Automated Fingerprint Submittal**
- **PADS RIRS Connection**