

FEB 02 1981

Docket No. 50-272

Mr. F. W. Schneider, Vice President  
Production  
Public Service Electric and Gas Company  
80 Park Plaza 15-A  
Newark, New Jersey 07101

Dear Mr. Schneider:

By letter dated January 6, 1981 to F. P. Librizzi we issued Amendment No. 31 to Facility Operating License No. DPR-70 for Salem Nuclear Generating Station Unit No. 1. Included in this amendment were revisions to the Radiological Technical Specifications that specify the minimum shift crew composition for Unit No. 1.

Subsequent to issuance of Amendment 31, members of your staff requested that further editorial clarification be made to ensure that the minimum crew composition accurately reflects the staff position reached during the licensing review of Unit No. 2. We have complied with this request in two ways. The footnote "a" on Page 6-4 has been applied to Senior Reactor Operators (SRO) as well as to Shift Supervisors (SS). The limitations placed on the work schedules of Licensed Operators (Page 6-4a) have been removed to be consistent with Item 1.A.1.3 (Shift Manning) in NUREG-0737. It is our understanding that equivalent limitations will be included in the administrative procedures for Salem Unit 1 where they will be available for review by the NRC Resident Inspectors.

Sincerely,

Original signed by:

Steven A. Varga, Chief  
Operating Reactors Branch #1  
Division of Licensing

Enclosure:

Pages 6-1, 6-2, 6-3, 6-4, and 6-4a to  
Appendix A of License No. DPR-70

cc:

See next page

DISTRIBUTION  
Docket File 50-272

NRC PDR

L PDR

TERA

NSIC

ORB#1 Rdg

DEisenhut

RPurple

TNOvak

RTedesco

GLainas

JRoe

JHeltemes

OELD

I&E (3)

SVarga

WRoss

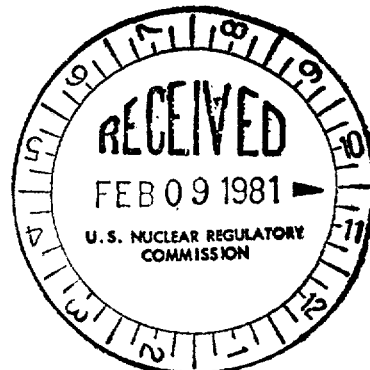
CParrish

Gray File

ARCS (16)

JKerrigan

8102190 539



OFFICE	ORB#1:DL	ORB#1:DL	LQB				
SURNAME	WRoss	SVarga	DVassallo				
DATE	1/29/81	1/26/81	1/29/81				



UNITED STATES  
NUCLEAR REGULATORY COMMISSION  
WASHINGTON, D. C. 20555

*Docket*

February 2, 1981

Docket No. 50-272

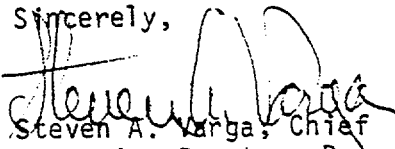
Mr. F. W. Schneider, Vice President  
Production  
Public Service Electric and Gas Company  
80 Park Plaza 15-A  
Newark, New Jersey 07101

Dear Mr. Schneider:

By letter dated January 6, 1981 to F. P. Librizzi we issued Amendment No. 31 to Facility Operating License No. DPR-70 for Salem Nuclear Generating Station Unit No. 1. Included in this amendment were revisions to the Radiological Technical Specifications that specify the minimum shift crew composition for Unit No. 1.

Subsequent to issuance of Amendment 31, members of your staff requested that further editorial clarification be made to ensure that the minimum crew composition accurately reflects the staff position reached during the licensing review of Unit No. 2. We have complied with this request in two ways. The footnote "a" on Page 6-4 has been applied to Senior Reactor Operators (SRO) as well as to Shift Supervisors (SS). The limitations placed on the work schedules of Licensed Operators (Page 6-4a) have been removed to be consistent with Item 1.A.1.3 (Shift Manning) in NUREG-0737. It is our understanding that equivalent limitations will be included in the administrative procedures for Salem Unit 1 where they will be available for review by the NRC Resident Inspectors.

Sincerely,

  
Steven A. Varga, Chief  
Operating Reactors Branch #1  
Division of Licensing

Enclosure:

Pages 6-1, 6-2, 6-3, 6-4, and 6-4a to  
Appendix A of License No. DPR-70

cc:

See next page

Mr. F. W. Schneider  
Public Service Electric and Gas Company

cc: Mark J. Wetterhahn, Esquire  
Conner, Moore and Corber  
Suite 1050  
1747 Pennsylvania Avenue, NW  
Washington, D. C. 20006

Richard Fryling, Jr., Esquire  
Assistant General Solicitor  
Public Service Electric and Gas Company  
80 Park Place  
Newark, New Jersey 07101

Gene Fisher, Bureau of Chief  
Bureau of Radiation Protection  
380 Scotch Road  
Trenton, New Jersey 08628

Mr. R. L. Mittl, General Manager  
Licensing and Environment  
Public Service Electric and Gas  
Company  
80 Park Plaza 17C  
Newark, New Jersey 07101

Mr. Henry J. Midura, Manager  
Salem Nuclear Generating Station  
Public Service Electric and Gas  
Company  
P. O. Box 168  
Hancocks Bridge, New Jersey 08038

Salem Free Library  
112 West Broadway  
Salem, New Jersey 08079

Leif J. Norrholm, Resident Inspector  
Salem Nuclear Generating Station  
U. S. Nuclear Regulatory Commission  
Drawer I  
Hancocks Bridge, New Jersey 08038

Peter A. Moeller  
Nuclear Licensing Engineer  
Public Service Electric and Gas Company  
80 Park Plaza - 15A  
Newark, New Jersey 07101

Mr. R. A. Uderitz  
General Manager, Nuclear  
Production  
Public Service Electric and  
Gas Company  
80 Park Plaza 15A  
Newark, New Jersey 07101

Mr. J. T. Boettger  
General Manager, Quality  
Assurance I&E  
Public Service Electric and  
Gas Company  
80 Park Plaza  
Newark, New Jersey 07101

Mr. Edwin A. Liden, Manager  
Nuclear Licensing  
Licensing and Environment Dept.  
Public Service Electric and Gas  
Company  
80 Park Plaza 16D  
Newark, New Jersey 07101

810 2190 545

## 6.0 ADMINISTRATIVE CONTROLS

### 6.1 RESPONSIBILITY

6.1.1 The Station Manager shall be responsible for overall facility operation and shall delegate in writing the succession to this responsibility during his absence.

### 6.2 ORGANIZATION

#### OFFSITE

6.2.1 The offsite organization for facility management and technical support shall be as shown on Figure 6.2-1.

#### FACILITY STAFF

6.2.2 The Facility organization shall be as shown on Figure 6.2-2 and:

- a. Each on duty shift shall be composed of at least the minimum shift crew composition shown in Table 6.2-1.
- b. At least one licensed Operator shall be in the control room when fuel is in the reactor.
- c. At least two licensed Operators shall be present in the control room during reactor start-up, scheduled reactor shutdown and during recovery from reactor trips.
- d. An individual qualified in radiation protection procedures shall be on site when fuel is in the reactor.
- e. All CORE ALTERATIONS after the initial fuel loading shall be directly supervised by either a licensed Senior Reactor Operator or Senior Reactor Operator Limited to Fuel Handling who has no other concurrent responsibilities during this operation.
- f. A Fire Brigade of at least 5 members shall be maintained onsite at all times. The Fire Brigade shall not include 4 members of the minimum shift crew necessary for safe shutdown of the unit or any personnel required for other essential functions during a fire emergency.



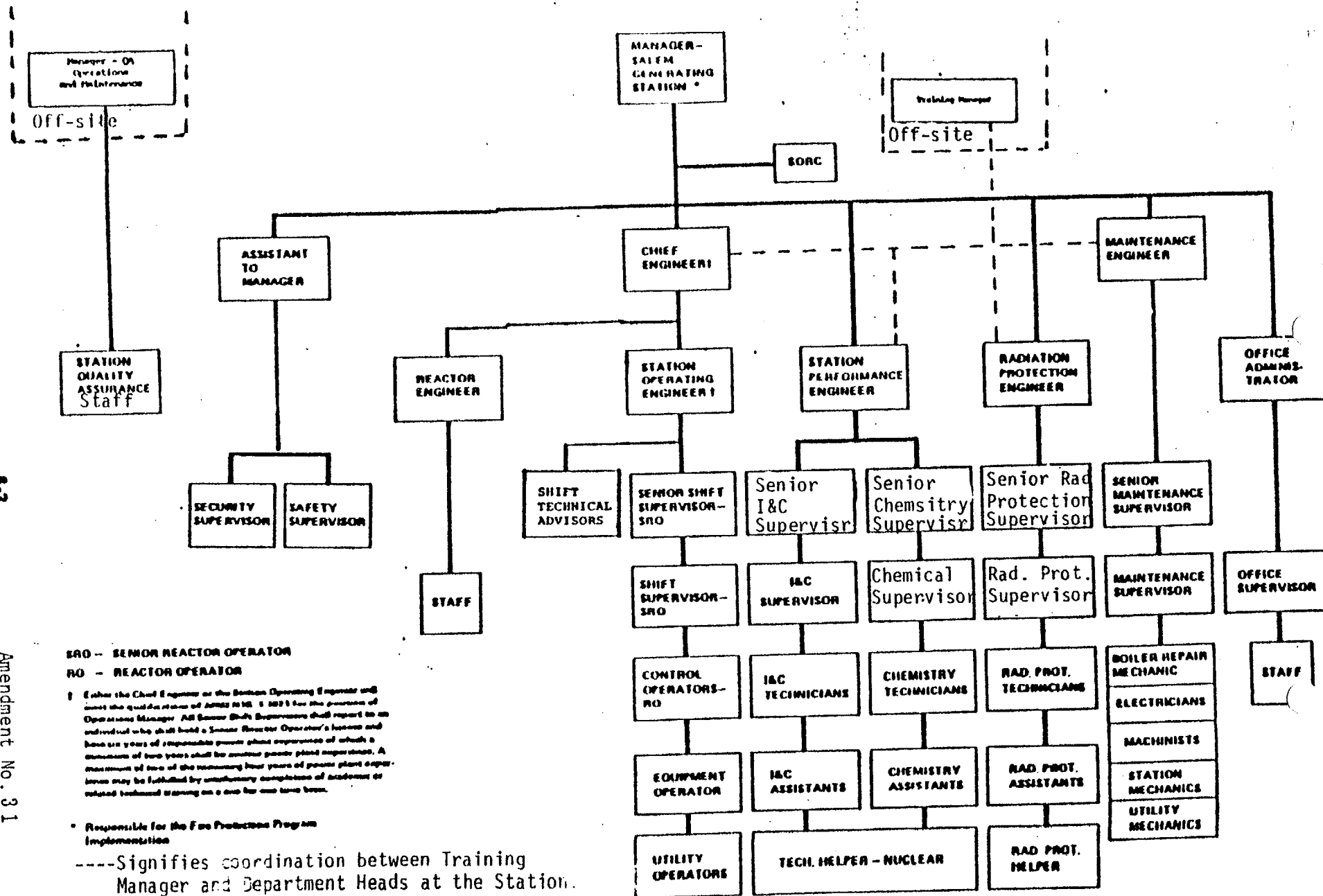


FIGURE 6.2.2 FACILITY ORGANIZATION - SALEM GENERATING STATION

TABLE 6.2-1

MINIMUM SHIFT CREW COMPOSITION

SALEM UNIT 1

WITH UNIT 2 IN MODES 5 OR 6 OR DE-FUELED		
POSITION	NUMBER OF INDIVIDUALS REQUIRED TO FILL POSITION	
	MODES 1, 2, 3 & 4	MODES 5 & 6
SS	1 <sup>a</sup>	1 <sup>a</sup>
SRO	1 <sup>a</sup>	none
RO	2	1
AO	2	2 <sup>b</sup>
STA	1	none

WITH UNIT 2 IN MODES 1, 2, 3 OR 4		
POSITION	NUMBER OF INDIVIDUALS REQUIRED TO FILL POSITION	
	MODES 1, 2, 3 & 4	MODES 5 & 6
SS	1 <sup>a</sup>	1 <sup>a</sup>
SRO	1 <sup>a</sup>	none
RO	2	1
AO	2	1
STA	1 <sup>a</sup>	none

a/ Individual may fill the same position on Unit 2

b/ One of the two required individuals may fill the same position on Unit 2

TABLE 6.2-1 (Continued)

SS - Shift Supervisor with a Senior Reactor Operators License on Unit 1  
SRO - Individual with a Senior Reactor Operators License on Unit 1  
RO - Individual with a Reactor Operators License on Unit 1  
AO - Auxiliary Operator  
STA - Shift Technical Advisor

Except for the Shift Supervisor, the Shift Crew Composition may be one less than the minimum requirements of Table 6.2.1 for a period of time not to exceed 2 hours in order to accommodate unexpected absence of on-duty shift crew members provided immediate action is taken to restore the Shift Crew Composition to within the minimum requirements of Table 6.2-1. This provision does not permit any shift crew position to be unmanned upon shift change due to an oncoming shift crewman being late or absent.

During any absence of the Shift Supervisor from the Control Room while the unit is in MODE 1, 2, 3 or 4, an individual (other than the Shift Technical Advisor) with a valid SRO license shall be designated to assume the Control Room command function. During any absence of the Shift Supervisor from the Control Room while the unit is in MODE 5 or 6, an individual with a valid RO license (other than the Shift Technical Advisor) shall be designated to assume the Control Room command function.