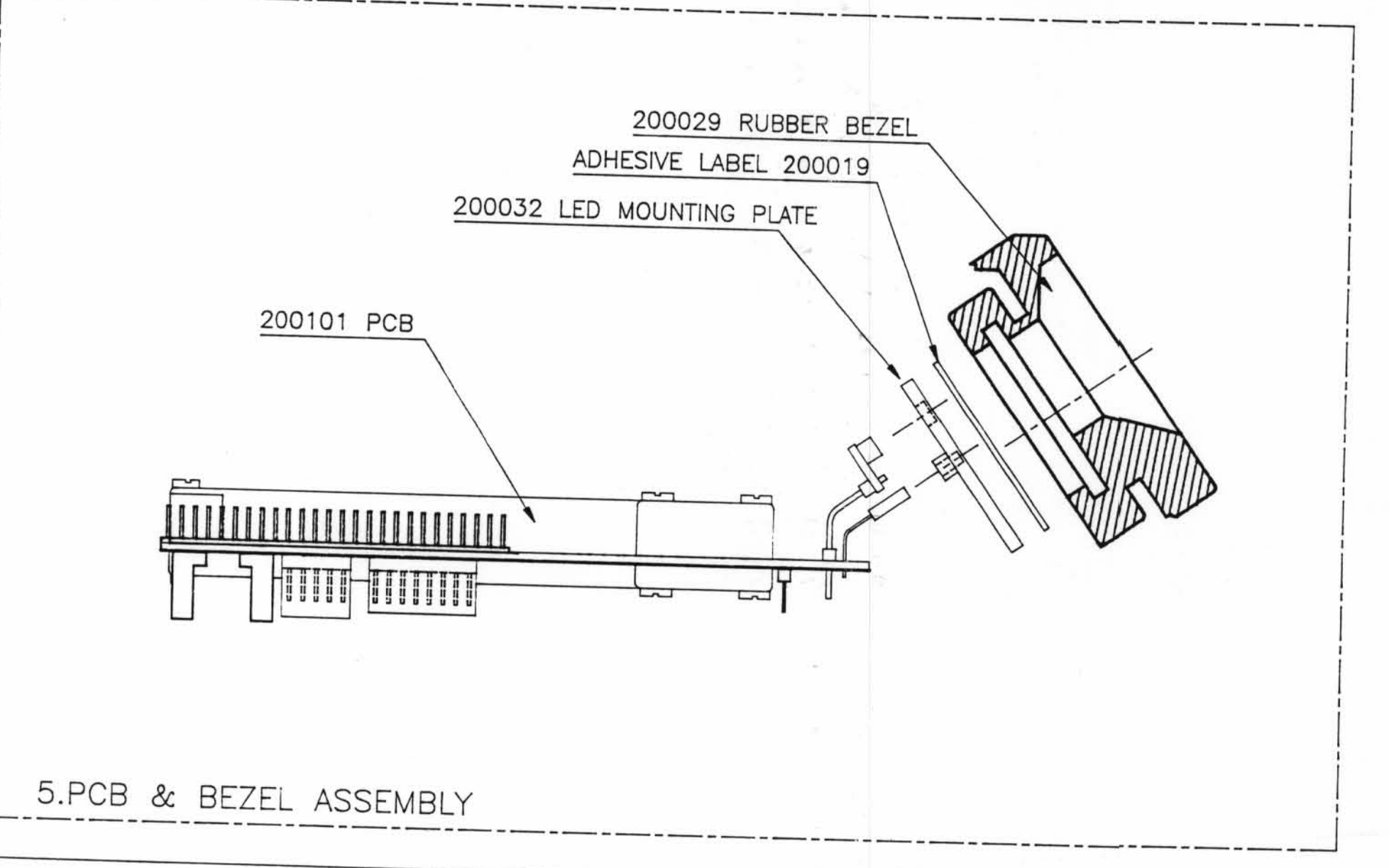
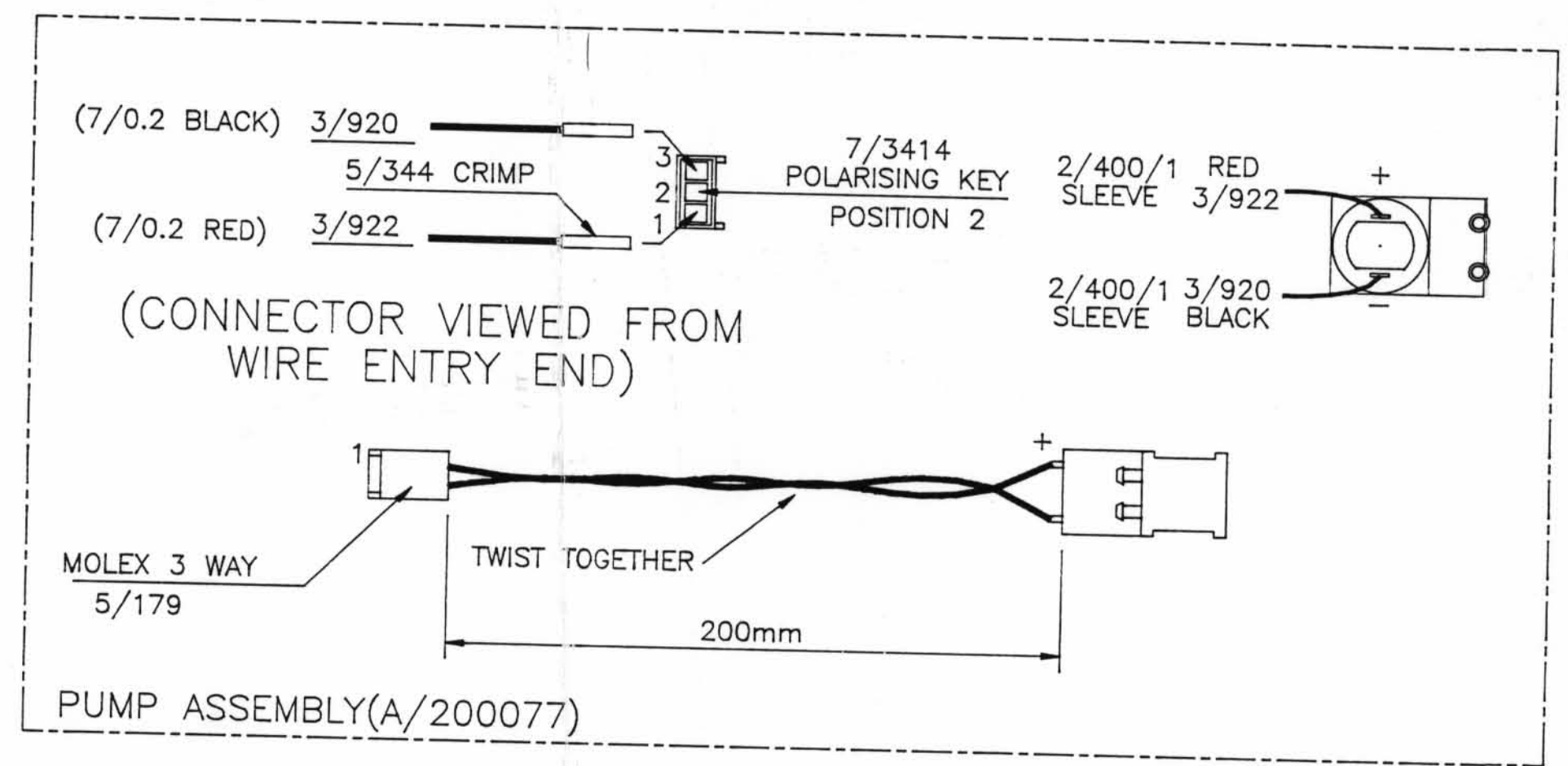


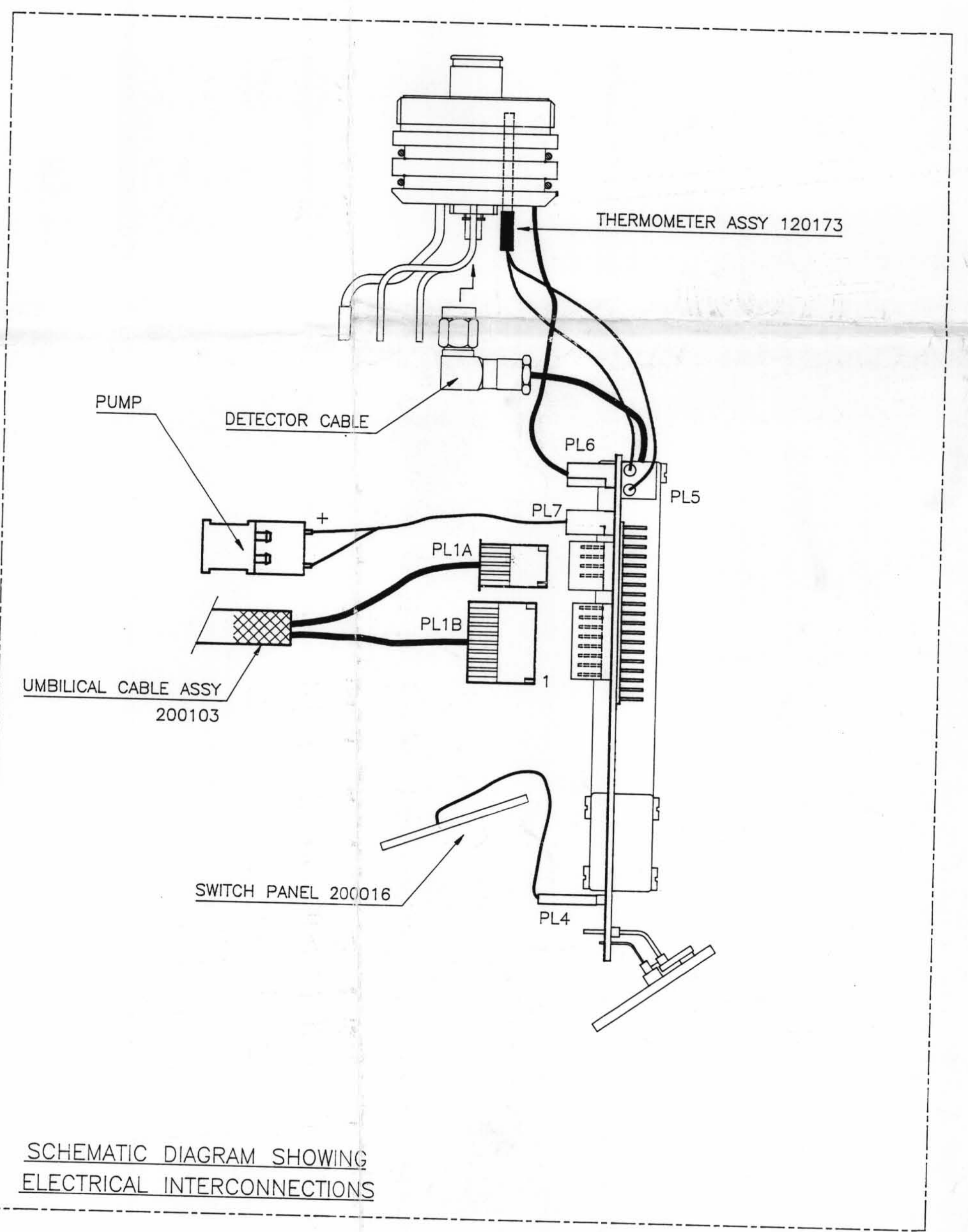
UMBILICAL/PUMP ASSEMBLY



5.PCB & BEZEL ASSEMBLY

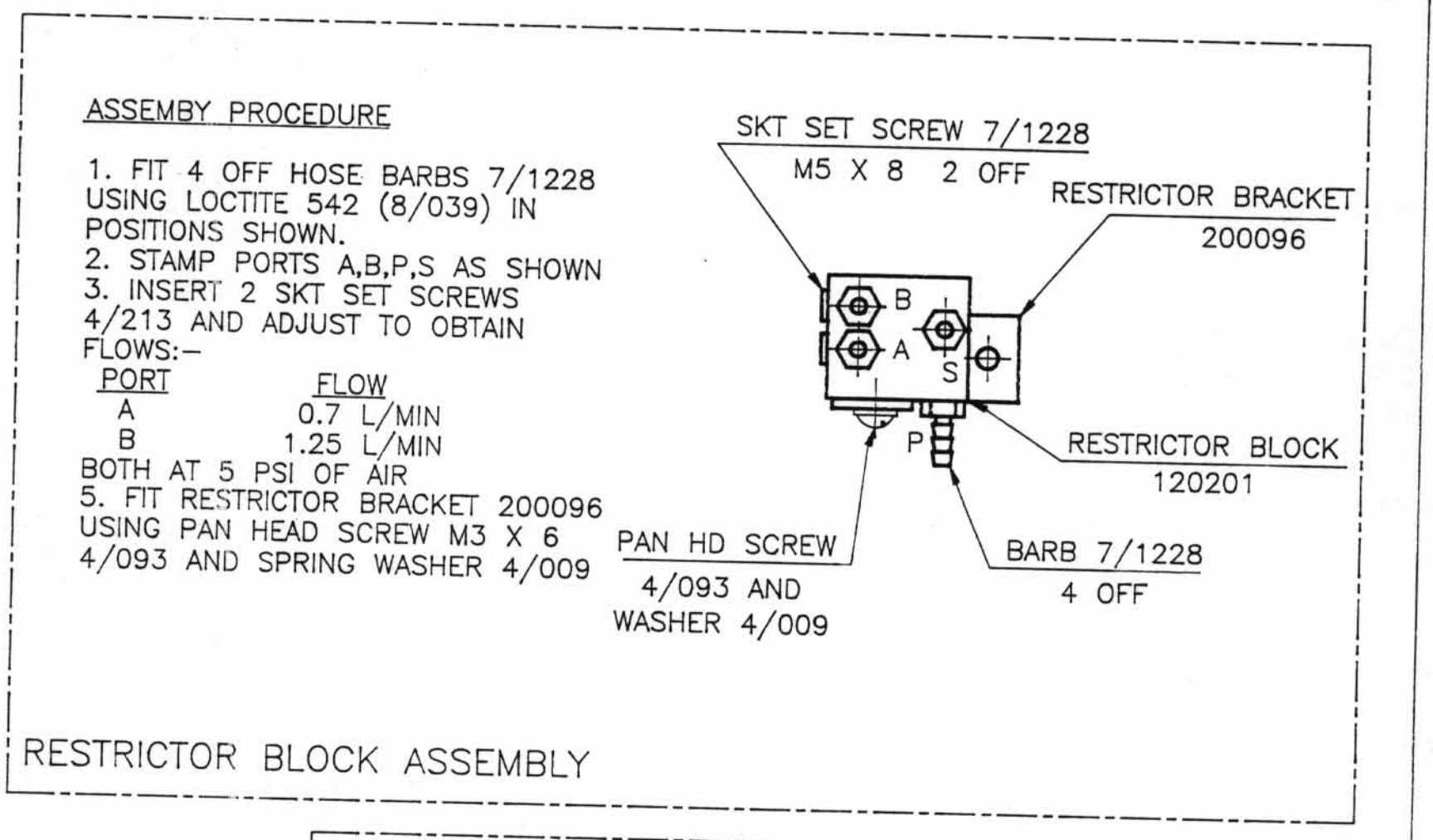


PUMP ASSEMBLY(A/200077)

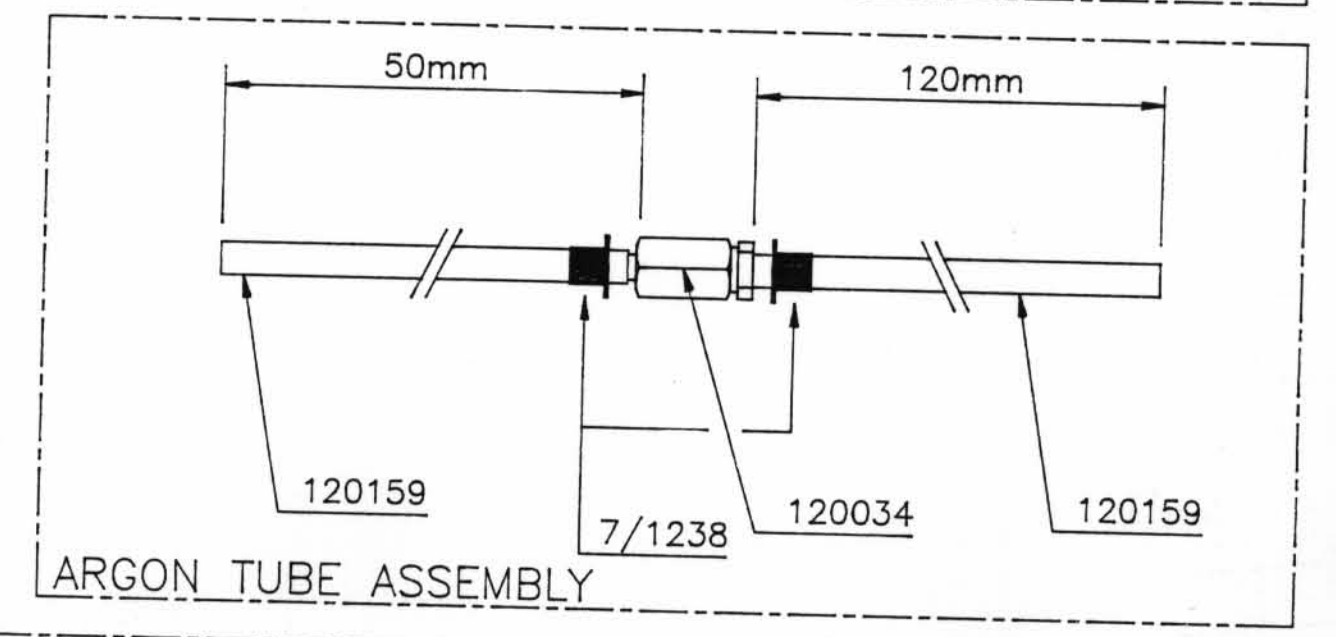


SCHEMATIC DIAGRAM SHOWING ELECTRICAL INTERCONNECTIONS

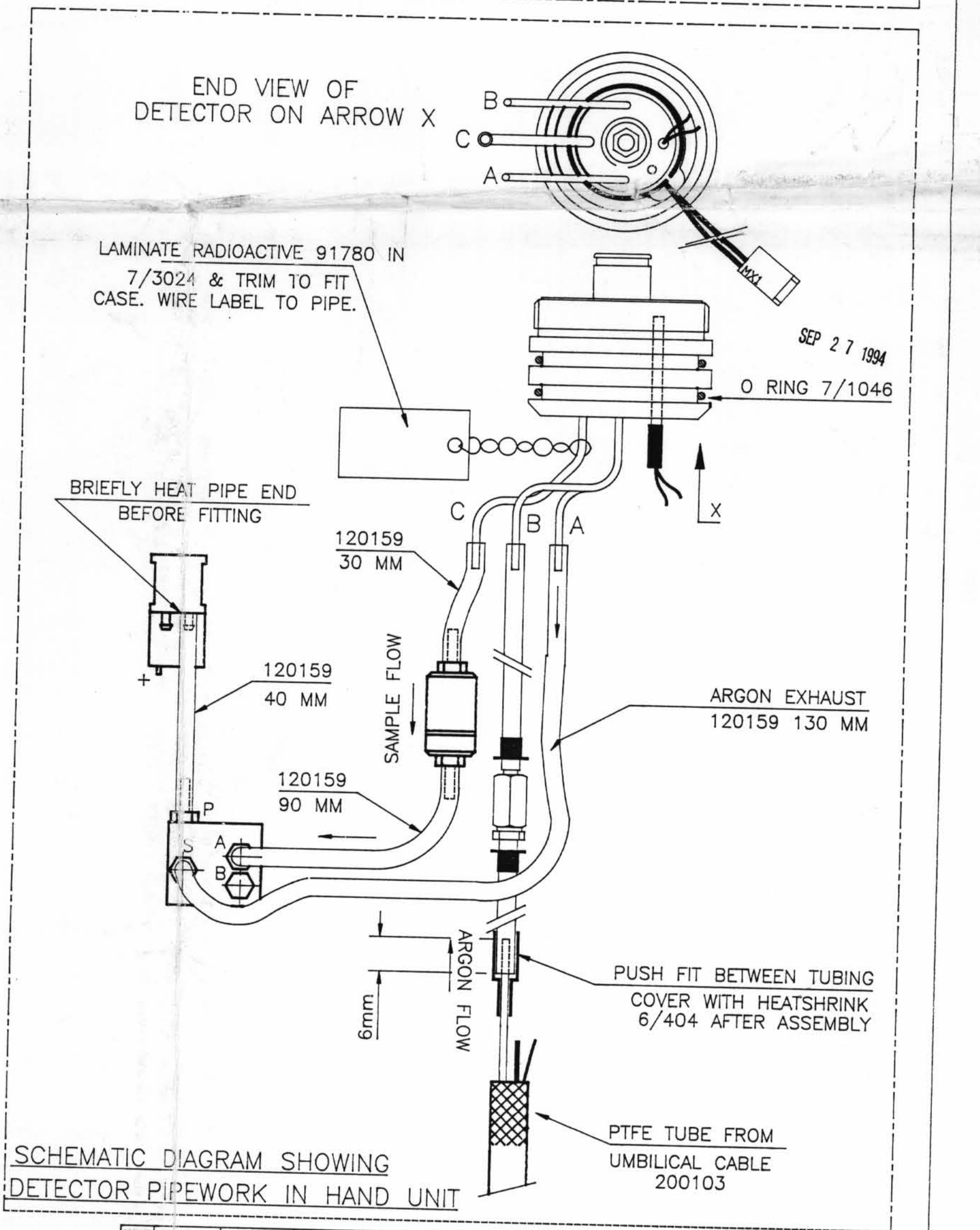
SEE SHT.2 FOR ASSEMBLY PROCEDURE



RESTRICTOR BLOCK ASSEMBLY



ARGON TUBE ASSEMBLY



SCHEMATIC DIAGRAM SHOWING DETECTOR PIPEWORK IN HAND UNIT

ISSUE	A	B	1	2
DATE	28/9/93	8/4/94	12/7/94	8/9/94
CONFORMS TO	BS318	DIMS. DO NOT SCALE PRINT		REMOVE ALL BURRS & SHARP EDGES
CHKD.	SCALE	MAT.	TOLERANCES UNLESS OTHERWISE STATED	
ORL	N.T.S.	FINISH	WHOLE NUMBERS ±0.4 1 DECIMAL PLACE = ±0.2 2 DECIMAL PLACES = ±0.1	
DATE	28/9/93	FINISH	SCREW THREADS MED. FIT ANGLES ±30°	
A/Cambridge Ltd			HAND UNIT ASSY (SHT.1 OF 2)	
LONDON ROAD, PAIPSFORD, CAMBRIDGE, CB2 4EF.			A/200001-1	
TEL: (0223) 334400			FAX: (0223) 835050	
THIS DRAWING NOT TO BE LOANED OR COPIED IN WHOLE OR PART WITHOUT WRITTEN PERMISSION OF A/CAMBRIDGE LTD				

9501090161