

SFP Risk

2/7/01

	Millstone1 (Bq)	Susqu. (Bq)	Susqu. (Ci)	Release Fraction	1465mod Curies Released
Cs-137 in 3.5 cores	8.38E+17	1.43E+18	3.88E+07	0.75	2.91E+07
Ru-106 in 3.5 cores	5.77E+17	9.87E+17	2.67E+07	0.75	2.00E+07
Pu-238 in 3.5 cores	1.78E+16	3.05E+16	8.23E+05	0.035	2.88E+04
Pu-239 in 3.5 cores	3.87E+15	6.62E+15	1.79E+05	0.035	6.26E+03
Pu-240 in 3.5 cores	5.40E+15	9.24E+15	2.50E+05	0.035	8.74E+03
Pu-241 in 3.5 cores	9.32E+17	1.59E+18	4.31E+07	0.035	1.51E+06
Cs-137	2.91E+07				
Ru-106	2.00E+07				
Pu isotopes	1.55E+06				

Acute Inhalation

	Acute Inhalation DCF - lungs Sv/Bq	rem/Ci	Ci	rem	fract. of Pu rem
Cs-137	8.29E-10	3.07E+03	2.91E+07	8.91E+10	
Ru-106	2.09E-08	7.73E+04	2.00E+07	1.55E+12	
Pu-238 in 3.5 cores	9.68E-07	3.58E+06	2.88E+04	1.03E+11	0.66
Pu-239 in 3.5 cores	9.12E-07	3.37E+06	6.26E+03	2.11E+10	0.13
Pu-240 in 3.5 cores	9.12E-07	3.37E+06	8.74E+03	2.95E+10	0.19
Pu-241 in 3.5 cores	5.37E-10	1.99E+03	1.51E+06	3.00E+09	0.02
					<u>1.00</u>
Cs-137	8.91E+10				
Ru-106	1.55E+12				
Pu isotopes	1.57E+11				

Chronic Inhalation

	Chronic Inhalation DCF- CEDE Sv/Bq	rem/Ci	Ci	rem	fract. of Pu rem
Cs-137	8.63E-09	3.19E+04	2.91E+07	9.28E+11	
Ru-106	1.29E-07	4.77E+05	2.00E+07	9.55E+12	
Pu-238 in 3.5 cores	7.79E-05	2.88E+08	2.88E+04	8.30E+12	0.41
Pu-239 in 3.5 cores	8.33E-05	3.08E+08	6.26E+03	1.93E+12	0.09
Pu-240 in 3.5 cores	8.33E-05	3.08E+08	8.74E+03	2.69E+12	0.13
Pu-241 in 3.5 cores	1.34E-06	4.96E+06	1.51E+06	7.48E+12	0.37
					<u>1.00</u>
Cs-137	9.28E+11				
Ru-106	9.55E+12				
Pu isotopes	2.04E+13				

6/4

1465

	Millstone1 (Bq)	Susqu. (Bq)	Susqu. (Ci)	Release Fraction	Curies Released
Cs-137 in 3.5 cores	8.38E+17	1.43E+18	3.88E+07	0.75	2.91E+07
Ru-106 in 3.5 cores	5.77E+17	9.87E+17	2.67E+07	0.005	1.33E+05
Pu-238 in 3.5 cores	1.78E+16	3.05E+16	8.23E+05	0.005	4.12E+03
Pu-239 in 3.5 cores	3.87E+15	6.62E+15	1.79E+05	0.005	8.95E+02
Pu-240 in 3.5 cores	5.40E+15	9.24E+15	2.50E+05	0.005	1.25E+03
Pu-241 in 3.5 cores	9.32E+17	1.59E+18	4.31E+07	0.005	2.15E+05

Cs-137	2.91E+07	2.91E+07
Ru-106	1.33E+05	2.00E+07
Pu isotopes	2.22E+05	1.55E+06
		(1465mod)

Acute Inhalation

	Acute Inhalation DCF - lungs				fract. of Pu rem
	Sv/Bq	rem/Ci	Ci	rem	
Cs-137	8.29E-10	3.07E+03	2.91E+07	8.91E+10	
Ru-106	2.09E-08	7.73E+04	1.33E+05	1.03E+10	
Pu-238 in 3.5 cores	9.68E-07	3.58E+06	4.12E+03	1.47E+10	0.66
Pu-239 in 3.5 cores	9.12E-07	3.37E+06	8.95E+02	3.02E+09	0.13
Pu-240 in 3.5 cores	9.12E-07	3.37E+06	1.25E+03	4.21E+09	0.19
Pu-241 in 3.5 cores	5.37E-10	1.99E+03	2.15E+05	4.28E+08	0.02
					<u>1.00</u>

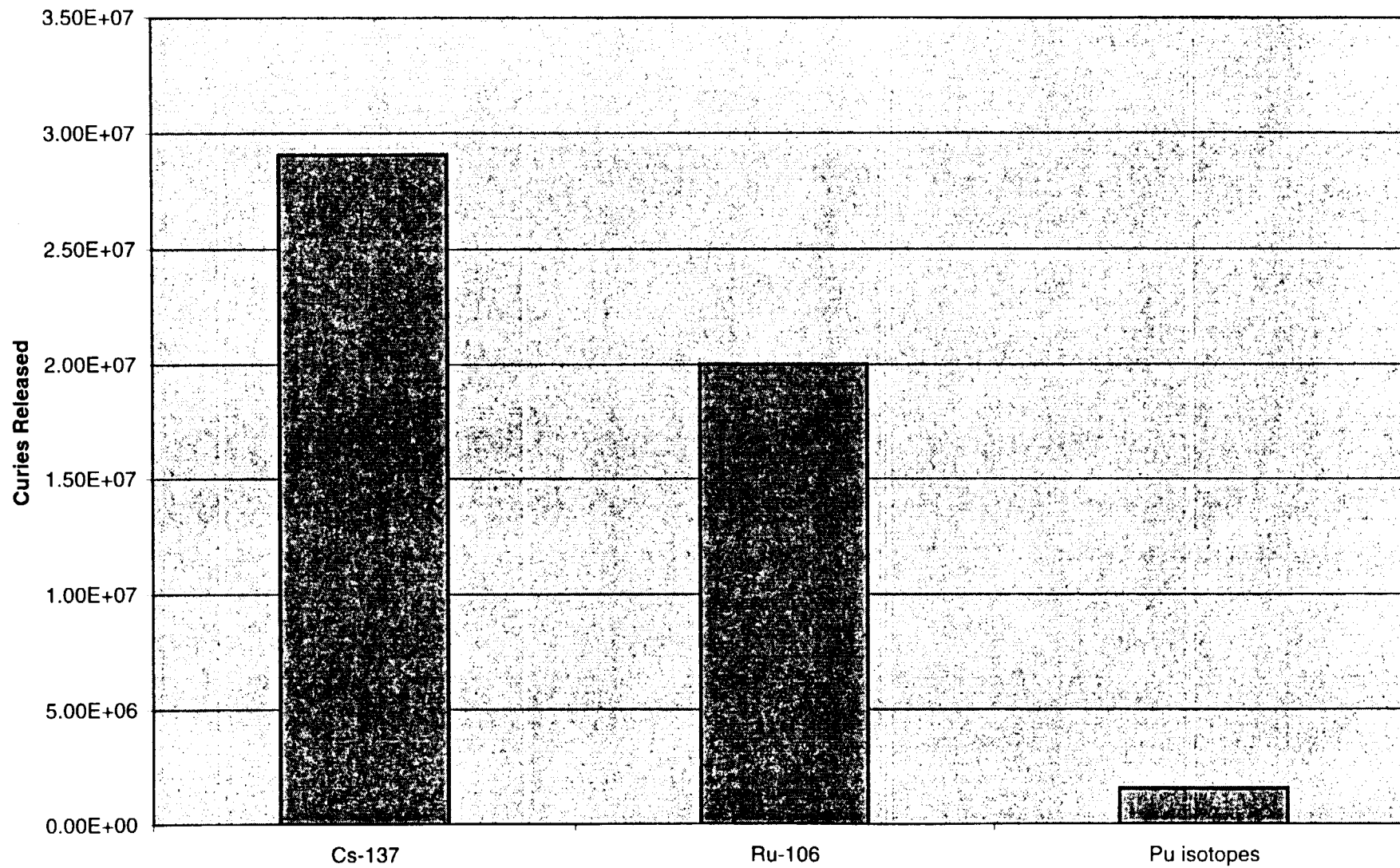
Cs-137	8.91E+10	8.91E+10
Ru-106	1.03E+10	1.55E+12
Pu isotopes	2.24E+10	1.57E+11
		(1465mod)

Chronic Inhalation

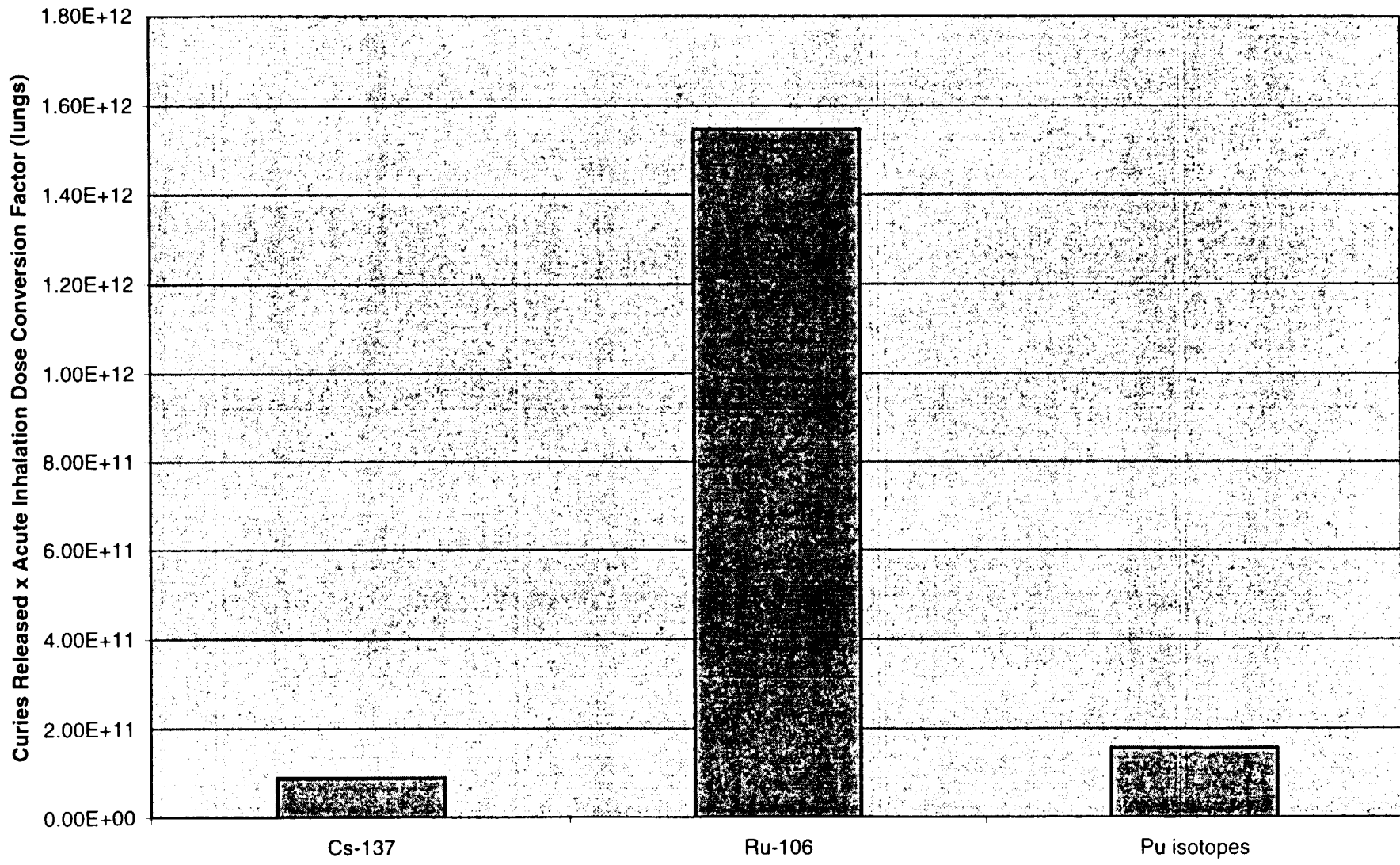
	Chronic Inhalation DCF- CEDE				fract. of Pu rem
	Sv/Bq	rem/Ci	Ci	rem	
Cs-137	8.63E-09	3.19E+04	2.91E+07	9.28E+11	
Ru-106	1.29E-07	4.77E+05	1.33E+05	6.37E+10	
Pu-238 in 3.5 cores	7.79E-05	2.88E+08	4.12E+03	1.19E+12	0.41
Pu-239 in 3.5 cores	8.33E-05	3.08E+08	8.95E+02	2.76E+11	0.09
Pu-240 in 3.5 cores	8.33E-05	3.08E+08	1.25E+03	3.85E+11	0.13
Pu-241 in 3.5 cores	1.34E-06	4.96E+06	2.15E+05	1.07E+12	0.37
					<u>1.00</u>

Cs-137	9.28E+11	9.28E+11
Ru-106	6.37E+10	9.55E+12
Pu isotopes	2.92E+12	2.04E+13
		(1465mod)

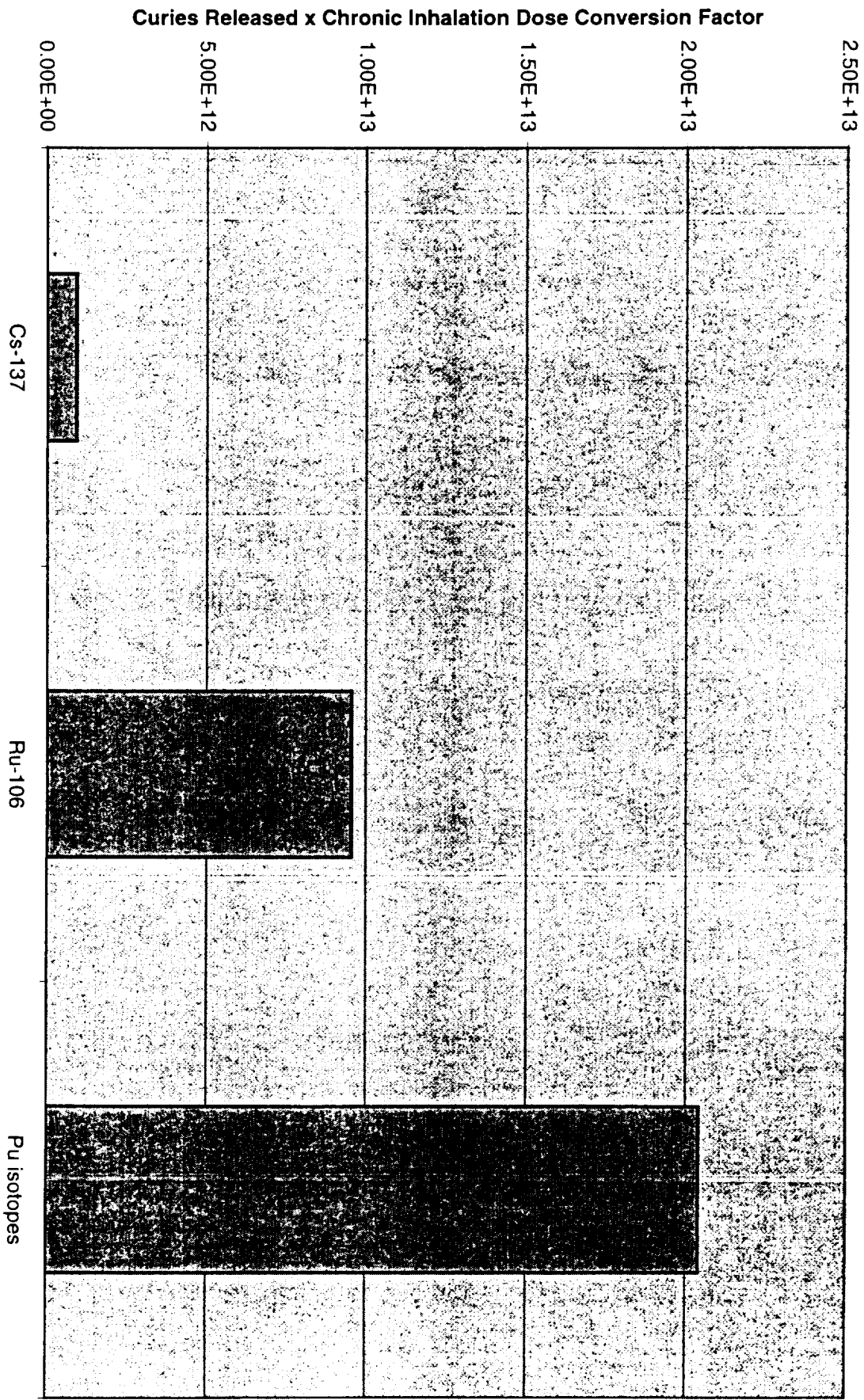
Source Term: 1465 modified

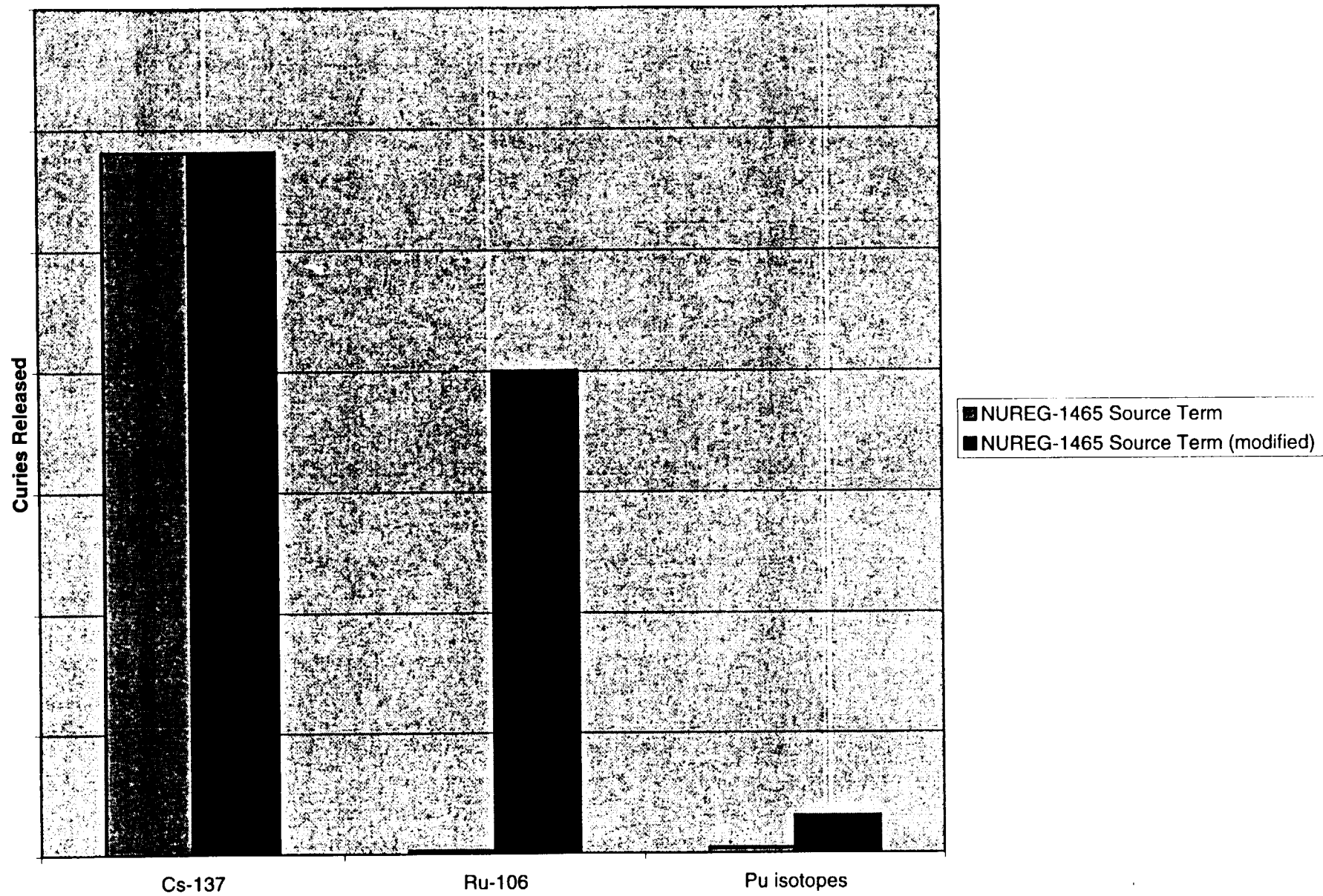


Source Term: 1465 modified



Source Term: 1465 modified





Curies Released

Cs-137

Ru-106

Pu isotopes

■ NUREG-1465 Source Term
■ NUREG-1465 Source Term (modified)

