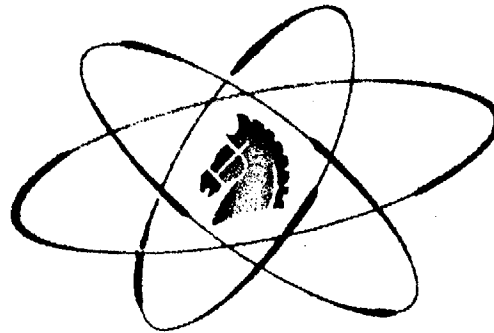


# **Early Release of a Portion of the Trojan Nuclear Plant Site**



**PGE / USNRC Meeting  
April 26, 2001**

# PGE Participants



- Mike Lackey - General Manager, Trojan
- Tom Meek - Radiation Protection Manager
- Lanny Dusek - Licensing Manager
- Spike Ford - Licensing Specialist

# Overview



- **Purpose of the Early Site Release and Property Description**
- **Historical Assessment and Site Characterization Conclusions**
- **Regulatory Approach**

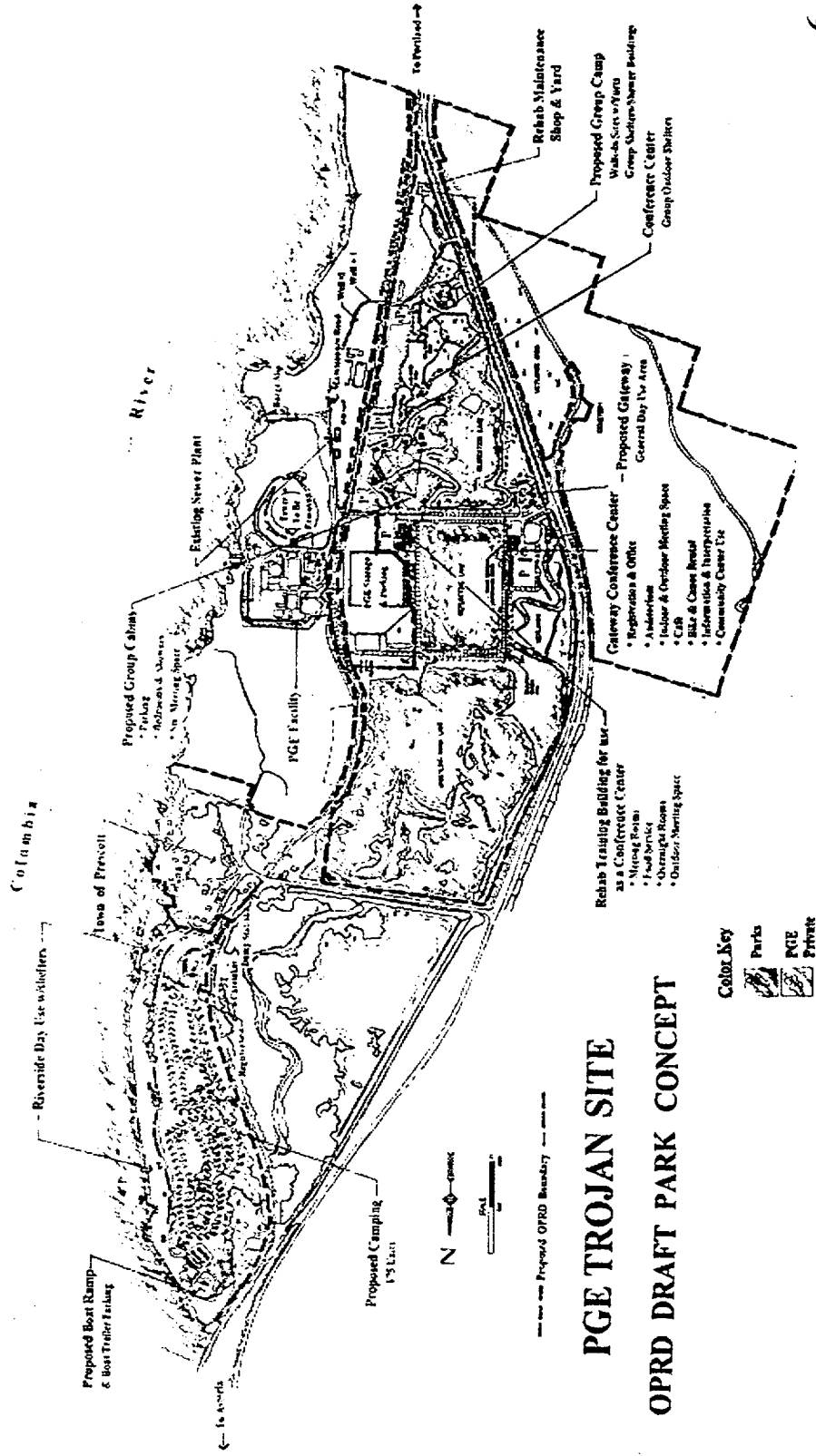
# Early Site Release

- **Release of a Portion of the Facility or Site**
- **Early - Prior to Completing Final Survey for the Entire Site**
- **Methodology in Accordance with Approved LTP**

# Purpose of Early Site Release

- **Prepare to Put Property to Alternate Use**
  - **By PGE**
  - **By Other Entities - Private or Public**
    - **Transfer of Property Ownership**

# Trojan Site Map



# Site Area Being Considered For Release

- **Approximately 500 Acres of Land**
  - Recreation Lake
  - Reflecting Lake
  - Wetlands Area
  - Switchyard
- **Buildings**
  - Visitor Center
  - Training Building
  - Trojan North Office Building
  - Outdoor Shelters
  - Park Maintenance Shop

# Site Historical Assessment and Characterization Conclusions

- **No Radioactive Material Requiring Remediation is Present in the Media Sampled**
- **No Radioactivity Requiring Remediation has been Spread Outside the Industrial Area**
- **Site Areas Outside the Industrial Area were not Impacted by Plant Activities (Note Exception)**
- **Exception: Pebble Springs Warehouse Area**



# Regulatory Considerations

- **Technical Specification Site Drawing**
  - Removed - Amendment 204, May 2000
- **Accidental Radiological Releases**
  - Maintain Control Over Exclusion Area Until Part 50 License Terminated
- **Site Occupancy by Members of the Public**
  - Update ODCM Site Occupancy Factors

# Regulatory Considerations (Cont.)

- **Evaluate and Address Effects on Other Documents/Programs:**
  - **Radiological Environmental Monitoring Program**
  - **Offsite Dose Calculation Manual**
  - **Decommissioning & License Termination Plan (PSDAR)**
  - **Security Plan**
  - **Safety Analysis Reports**

# Regulatory Approach

- **Submit Two Letters**
  - **Letter of Intent**
  - **Notification of Completion**

# Regulatory Approach (Cont.)

- **Letter of Intent**

- **Description of Property to be Released**
- **Description of Radiological Survey Plans**
- **Schedule of Surveys (Invite Observation or Confirmatory Surveys)**
- **Commitment to Submit Release Survey Report Upon Completion**

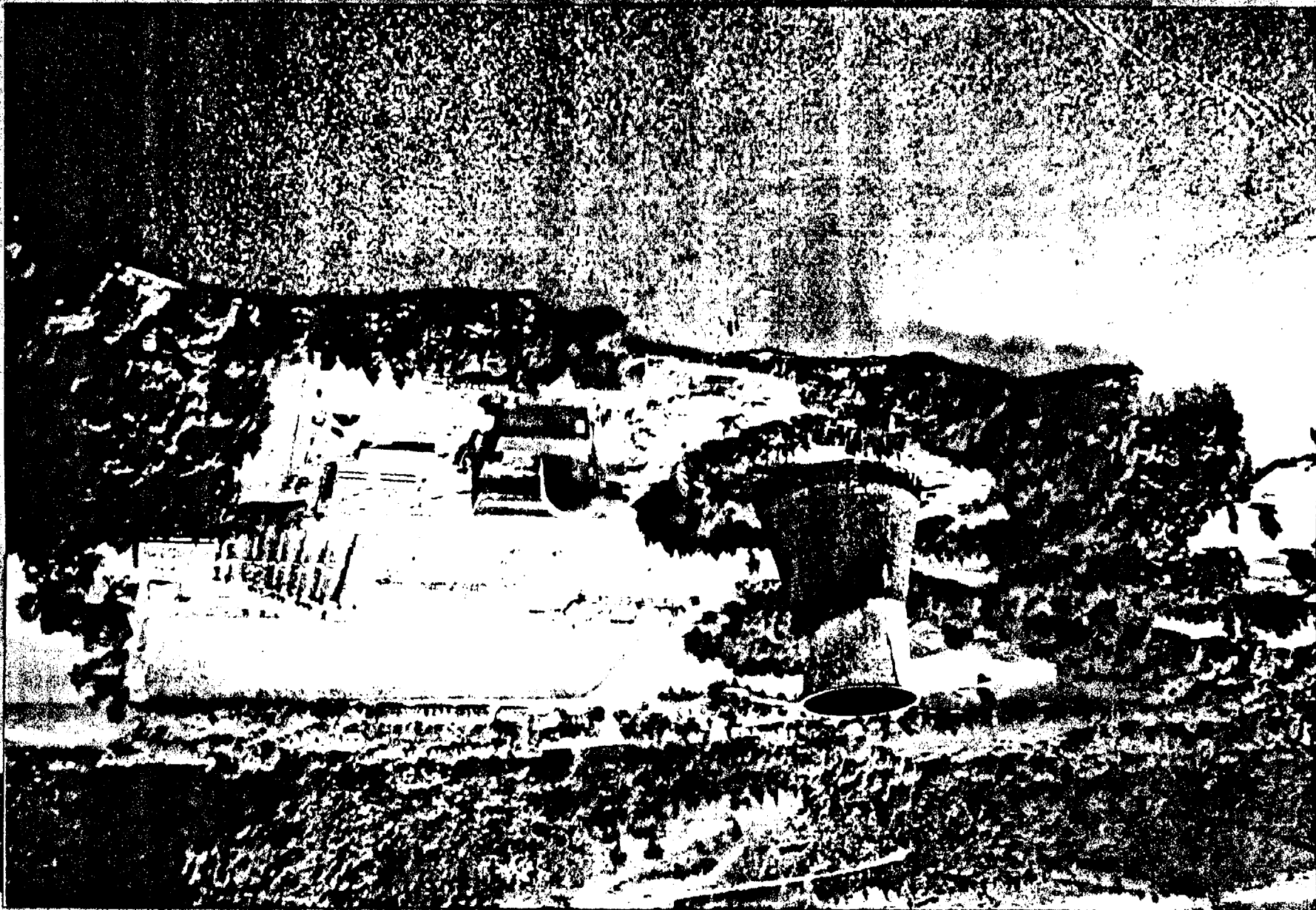
# Regulatory Approach (Cont.)

- **Notification of Completion**

- **Statement that Property Meets Release Criteria of LTP**
- **Commitment to Maintain Control Over Exclusion Area Until Part 50 License is Terminated**
- **Submit Survey Release Report**
- **Set Date For Property Release (60 Days)**

# Schedule

- **Oregon EFSC Meeting - March 2001**
- **NRC Meeting - April 2001**
- **Letter of Intent To NRC - May 2001**
- **Final and Confirmatory Surveys - Summer 2001**
- **License Document Review and Revision Preparation  
May-July 2001**
- **Notification of Completion Letter - Late 2001**



**THIS PAGE IS AN  
OVERSIZED DRAWING  
OR FIGURE,  
THAT CAN BE VIEWED AT  
THE RECORD TITLED:**

**SITE AREA MAP**

**WITHIN THIS PACKAGE...OR,  
BY SEARCHING USING THE  
DRAWING NUMBER:**

**NONE**

**NOTE: Because of this page's large file size, it may be more convenient to copy the file to a local drive and use the Imaging (Wang) viewer, which can be accessed from the Programs/Accessories menu.**

**D-1**