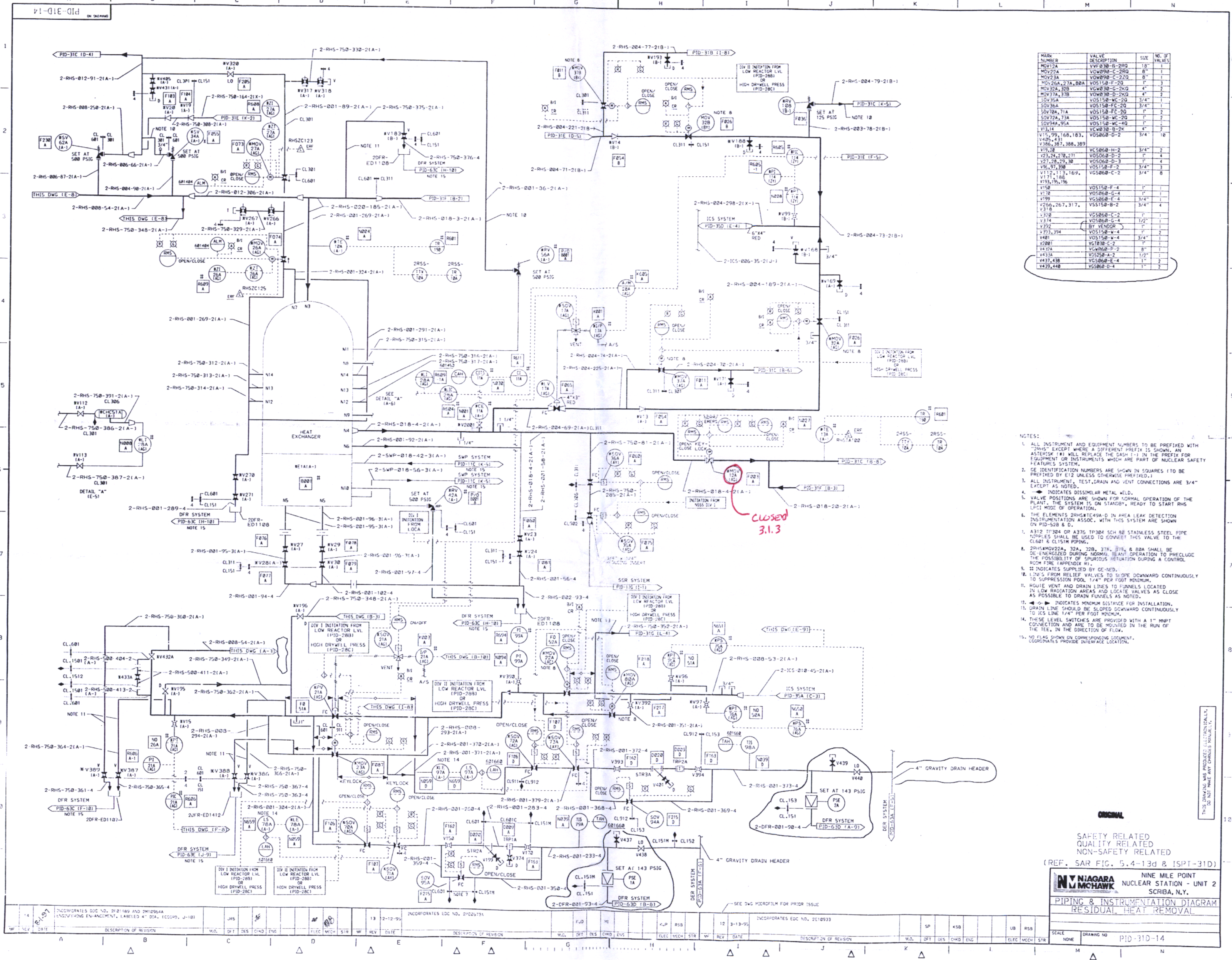


NOT REQUIRED  
FOR ANSWER



NO.	SYMBOL	DESCRIPTION	SIZE	UNIT
1	PT	PRESSURE TRANSMITTER	1/2"	PSI
2	LT	LEVEL TRANSMITTER	1/2"	FT
3	FT	FLOW TRANSMITTER	1/2"	FT
4	RT	TEMPERATURE TRANSMITTER	1/2"	°F
5	ST	STRIP TRANSMITTER	1/2"	FT
6	VT	VIBRATION TRANSMITTER	1/2"	FT
7	WT	WEIGHT TRANSMITTER	1/2"	FT
8	XT	EXTENSION TRANSMITTER	1/2"	FT
9	YT	YIELD TRANSMITTER	1/2"	FT
10	ZT	ZENER TRANSMITTER	1/2"	FT

- NOTES:
1. ALL INSTRUMENT AND EQUIPMENT NUMBERS TO BE PREFIXED WITH ADDRESS IF NOT SHOWN OTHERWISE. THE ADDRESS IS THE NUMBER OF THE EQUIPMENT OR INSTRUMENT WHICH ARE PART OF NUCLEAR SAFETY RELATED SYSTEM.
  2. IDENTIFICATION NUMBERS ARE SHOWN IN SQUARES TO BE PREFIXED BY 472 UNLESS OTHERWISE NOTIFIED.
  3. IN CASE OF TEST, LOCK AND TAG CONNECTIONS ARE 3/4" EXCEPT AS NOTED.
  4. \* INDICATES DISCONNECTABLE METAL KILL.
  5. \* INDICATES DISCONNECTABLE METAL KILL.
  6. THE ELEMENTS SHOWN IN AREA LEAK DETECTION INSTRUMENTS ARE ASSOCIATED WITH THIS SYSTEM AND SHOWN ON MID-208 & 5.
  7. 4722 ITEMS OF 4720 SIZE ARE STAINLESS STEEL PIPE. OTHERS SHALL BE WELDED TO CONFORM THIS VALVE TO THE CLASS & CLASS PERMITS.
  8. INSTRUMENTS 208A, 208B, 208C, 208D, & 208E SHALL BE THE INSTRUMENTS WHICH ARE USED FOR OPERATION OF THE RESIDUAL HEAT REMOVAL SYSTEM.
  9. 1/2" S FROM RELIEF VALVES TO BE DOWNWARD CONTINUOUSLY TO THE INSTRUMENT ROOM. 1/4" PER FOOT ROOM.
  10. INSTRUMENT ROOM AND INSTRUMENTS TO BE LOCATED IN LOW RADIATION AREA AND TO BE AS CLOSE AS POSSIBLE TO DRAIN TRACES AS NOTED.
  11. \* \* \* INDICATES WINKER SURFACE FOR INSTALLATION.
  12. DRAIN LINE CHECKS BY VALVES DOWNWARD CONTINUOUSLY TO 1/2" LINE 1" PER FOOT ROOM.
  13. THESE LINE CHECKS ARE PROVIDED WITH A 1" INPT CONNECTION AND ARE TO BE LOCATED IN THE RUN OF THE TIE, IN THE DIRECTION OF FLOW.
  14. \* \* \* INDICATES WINKER SURFACE FOR INSTALLATION.

SAFETY RELATED  
QUALITY RELATED  
NON-SAFETY RELATED  
(REF. SAR FIG. 5.4-13d & ISPI-31D)  
**N. MOHAWH** NINE MILE POINT  
NUCLEAR STATION - UNIT 2  
SCHEMATIC  
PIPING & INSTRUMENTATION DIAGRAM  
RESIDUAL HEAT REMOVAL  
DRAWING NO. PID-31D-14

D-3